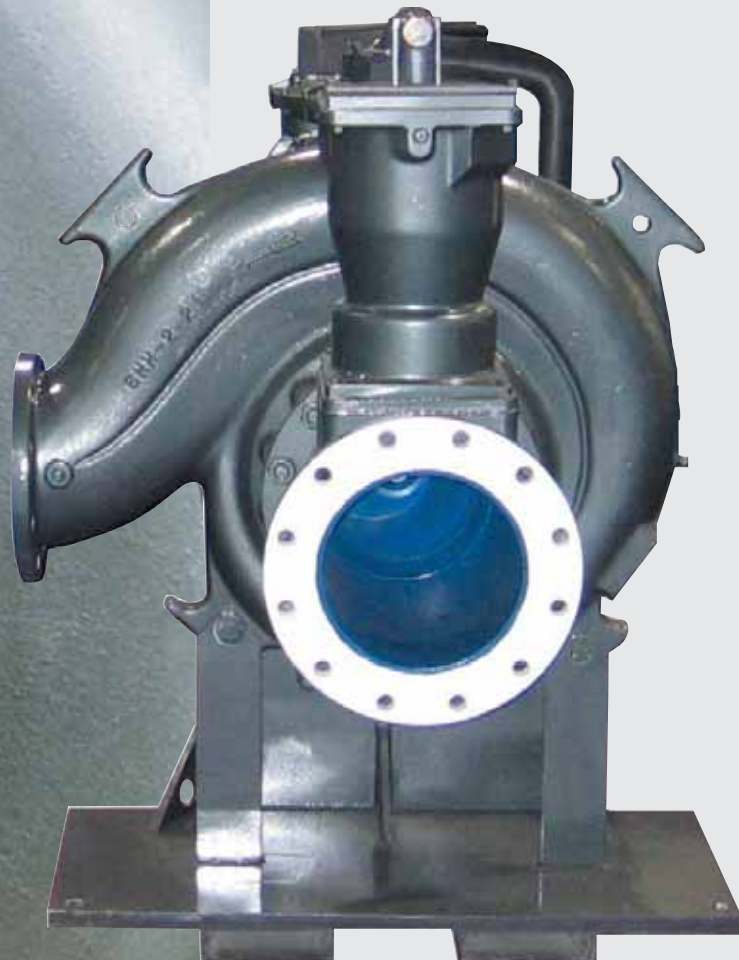


CORNELL PUMP COMPANY

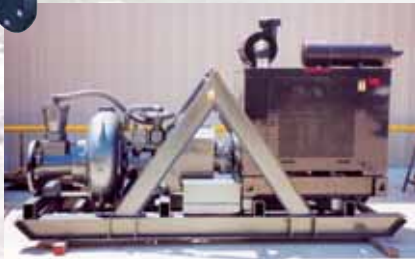
Redi-Prime[®]
Pumps



SETTING THE STANDARD

Cornell's Redi-Prime® pumps are designed and engineered for the most rugged and demanding industries; construction, industrial, rental and municipal. With over 50 years of proven experience and reliability Cornell Pump Company has established the highest industry standard for premium quality and rugged performance.

Our pumps are backed by an industry-leading two-year warranty.



Cornell Pump Company is setting the standard for the construction pumping industry. Flow characteristics that were 'good enough' before are no longer acceptable. Cornell's innovative engineering and forward thinking have made our pumps capable of producing up to 400 percent more flow than the construction industry standards.

Cornell's hydraulic efficiencies reach well into the 80 percent range, significantly more than competitive products. In the new millennium there will be a need for more efficient pumps. It will no longer be acceptable to settle for a pump operating at 50% - 60% efficiency. Cornell Pump Company has made these pumps obsolete.

Cornell's priming system was specifically designed with the environment in mind. By using a positive sealing float box and a diaphragm vacuum pump, there is absolutely no water carry-over to contaminate the environment. Cornell pumps are designed for the new millennium.

Energy Efficiency

Cornell Pumps are designed to deliver *best in class efficiency*. Depending on operating hours, fuelant, and horsepower required, you can save \$3,000 per year (or more) in energy costs. Cornell manufactures *more than 60 clear liquid and non-clog pumps* that meet or exceed optimum efficiency standards for centrifugal pumps.

Select High Efficiency Pump Models:

| | | |
|-----|---|---------------|
| 8H | - | 88% efficient |
| 6RB | - | 89% efficient |
| 5RB | - | 86% efficient |
| 4RB | - | 85% efficient |

BENEFITS

- Fully automatic self-priming, dry-prime pump.
- Handles air/liquid mixtures with ease.
- Rapidly primes and re-primers completely unattended.
- Environmentally safe priming system designed to prevent product leakage.
- Patented Cycloseal® and Run-Dry™ options.
- Handles large sized solids.
- High suction lift capability up to 28 feet.
- Premium hydraulic efficiency for reduced energy consumption.

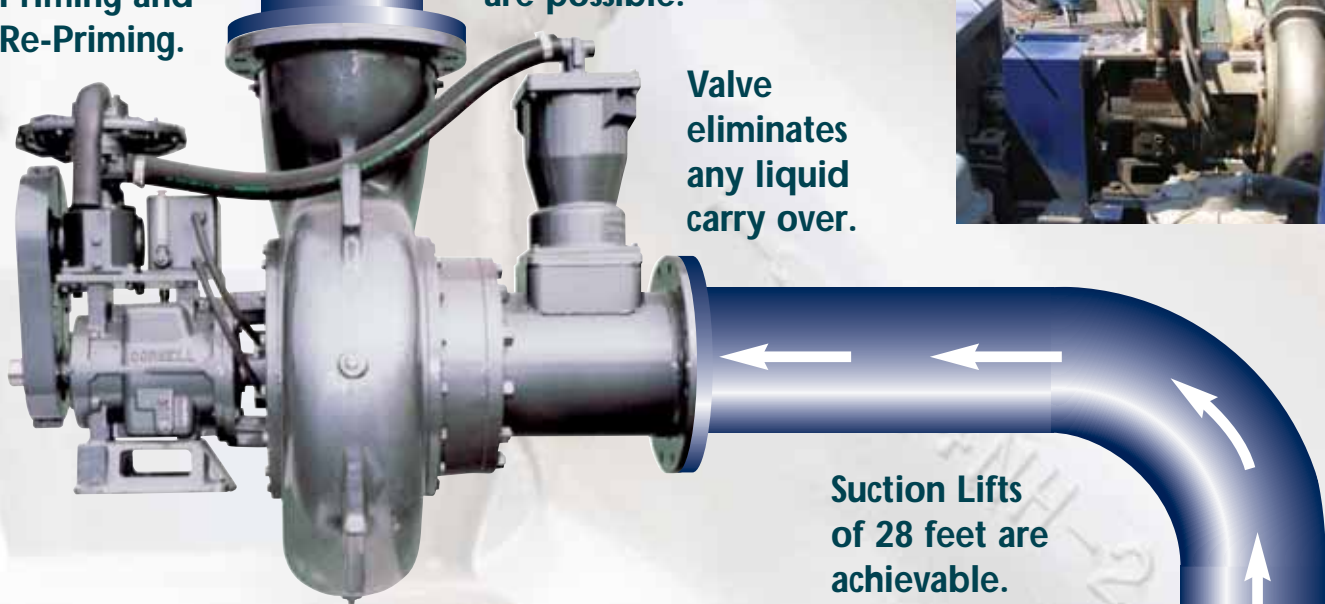


CORNELL REDI-PRIME®

Automatic Priming and Re-Priming.

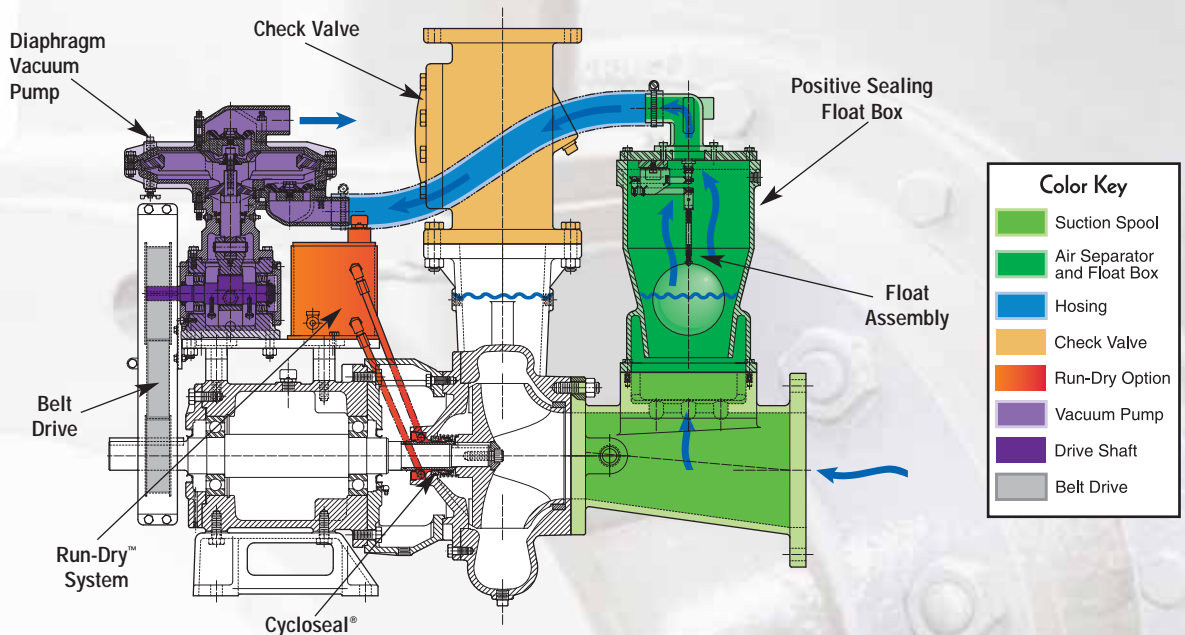
Heads of up to 470 feet are possible.

Valve eliminates any liquid carry over.

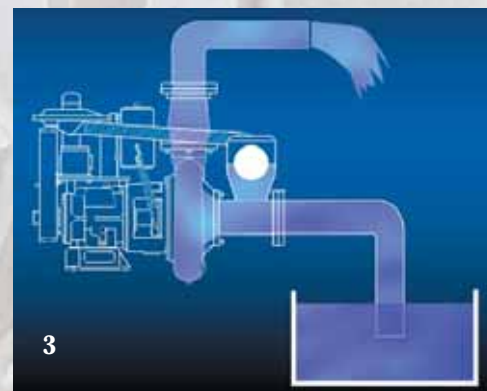
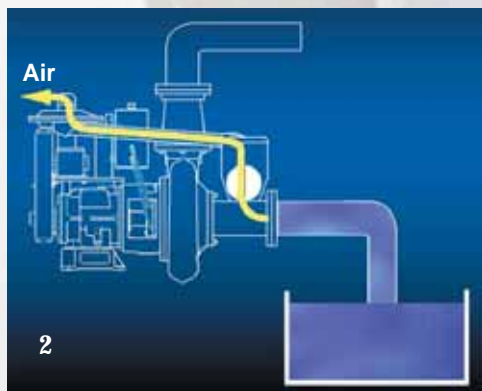
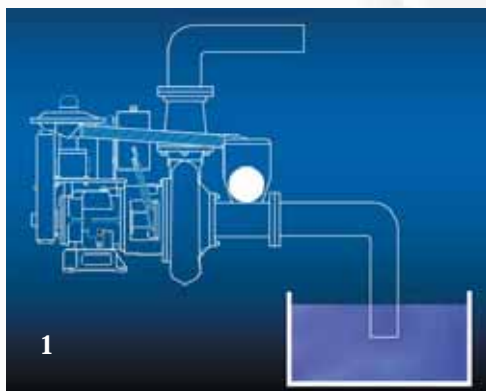


Suction Lifts of 28 feet are achievable.

REDI-PRIME® COMPONENTS



THE REDI-PRIME® SYSTEM



Cornell offers the widest range of pump sizes and capacities in the industry. No matter what your requirements are, Cornell can provide you with a package that will fill your needs – Clear Liquid pumps up to 10", Solids Handling pumps up to 30" and Slurry pumps up to 4".

EFFICIENCY

In addition to a dependable pump system, today's systems must also be efficient and economical. As energy costs rise, conservation and efficiency of operation become critical issues for customers as they strive to minimize expenses associated with energy consumption. Cornell pumps maintain superb hydraulic operating efficiencies.

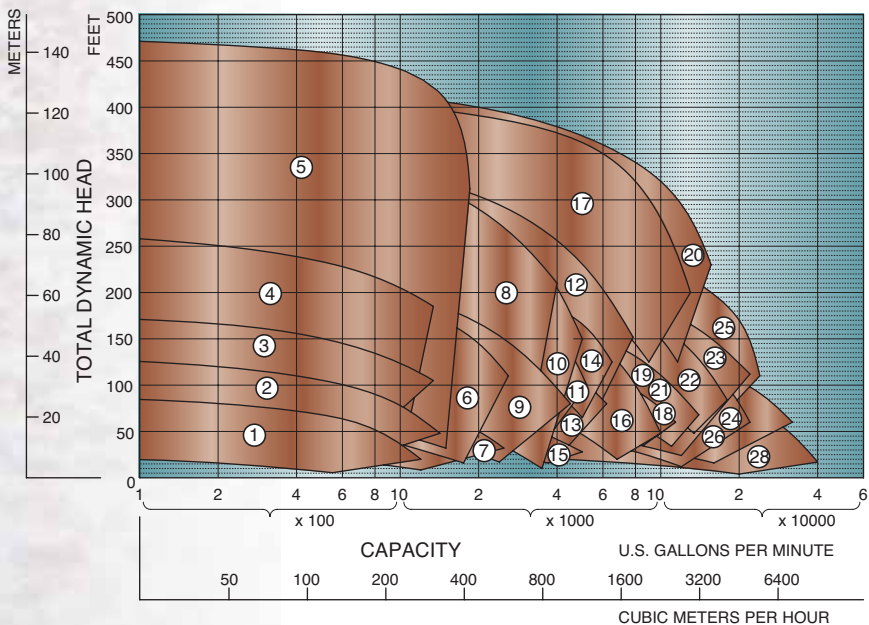
The bottom line – Cornell pumps cost less to operate.

Pump Options: Solids Handling Pumps

| Model | Disch. Size | Max. Cap. | Max. Solids | Max. Head | Max. Suction Lift | RPM |
|----------|-------------|------------|-------------|-----------|-------------------|-------|
| 4NNTL | 4" | 1,450 gpm | 3" | 175' | 25' | 2,500 |
| 4NNT | 4" | 1,400 gpm | 3" | 150' | 25' | 2,000 |
| 4NHTA | 4" | 1,400 gpm | 3" | 225' | 25' | 2,100 |
| 4414T | 4" | 1,400 gpm | 3" | 350' | 25' | 2,000 |
| 4NHTB | 4" | 1,600 gpm | 3" | 425' | 25' | 2,000 |
| 6NHTA | 6" | 2,700 gpm | 3" | 280' | 25' | 2,000 |
| 6NNT | 6" | 2,550 gpm | 3" | 150' | 25' | 2,100 |
| 6NHTB | 6" | 4,250 gpm | 3.38" | 350' | 25' | 1,800 |
| 8NNT | 8" | 4,500 gpm | 3.38" | 255' | 25' | 1,900 |
| 8NHTA | 8" | 5,000 gpm | 3.38" | 350' | 25' | 1,800 |
| 8NHTH | 8" | 6,250 gpm | 4" | 255' | 25' | 1,200 |
| 10NNT | 10" | 6,300 gpm | 4" | 340' | 25' | 1,800 |
| 10NHTB | 10" | 8,000 gpm | 4.75" | 195' | 25' | 1,200 |
| 10NHTA | 10" | 6,400 gpm | 4.25" | 245' | 25' | 1,200 |
| 12NHTL | 12" | 5,200 gpm | 4.25" | 140' | 25' | 1,500 |
| 12NNF | 12" | 8,500 gpm | 3" | 195' | 25' | 1,800 |
| 12NHG28 | 12" | 12,000 gpm | 3.2" | 410' | 25' | 1,200 |
| 14NHG | 14" | 12,000 gpm | 4" | 210' | 25' | 1,500 |
| 14NHGH | 14" | 13,500 gpm | 4.25" | 145' | 25' | 1,200 |
| 14NHG28 | 14" | 15,000 gpm | 4.25" | 430' | 25' | 1,200 |
| 16NHGH | 16" | 13,500 gpm | 4.25" | 175' | 25' | 1,200 |
| 16NHG22 | 16" | 16,500 gpm | 4.5" | 265' | 25' | 1,200 |
| 18NHG | 18" | 22,000 gpm | 5" | 220' | 25' | 900 |
| 18NHFL | 18" | 26,000 gpm | 5" | 190' | 25' | 890 |
| 18NHFL34 | 18" | 22,000 gpm | 4.5" | 320' | 25' | 900 |
| 20NHFL | 20" | 18,000 gpm | 5" | 116' | 25' | 720 |
| 24NNG | 24" | 32,000 gpm | 5.25" | 135' | 25' | 750 |
| 30NNT | 30" | 38,000 gpm | 10.2" | 110' | 25' | 585 |



Solids Handling Enclosed Impeller, Redi-Prime® Curves



Redi-Prime® Models

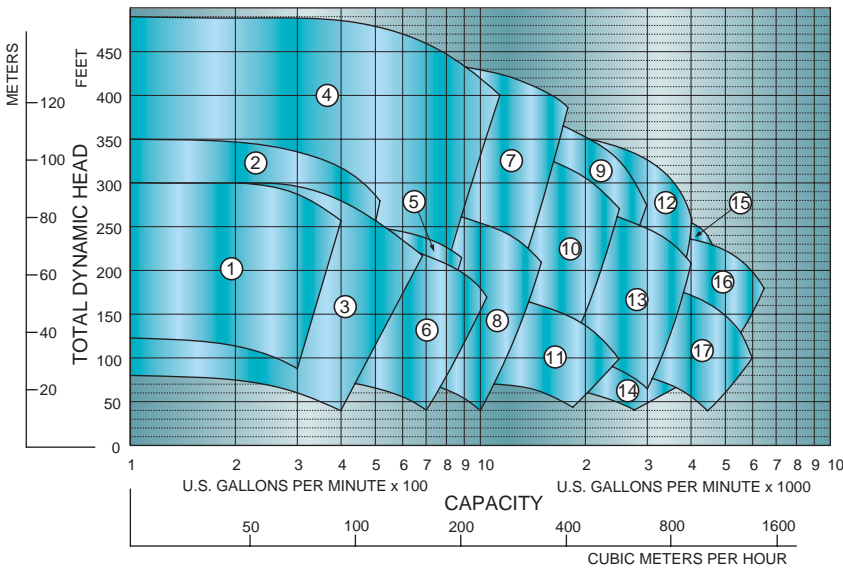
1. 4NNTL
2. 4NNT
3. 4NHTA
4. 4414T
5. 4NHTB
6. 6NHTA
7. 6NNT
8. 6NHTB
9. 8NNT
10. 8NHTA
11. 8NHTH
12. 10NNT
13. 10NHTB
14. 10NHTA
15. 12NHTL
16. 12NNF
17. 12NHG28
18. 14NHG
19. 14NHGH
20. 14NHG28
21. 16NHGH
22. 16NHG22
23. 18NHG
24. 18NHFL
25. 18NHFL34
26. 20NHFL
27. 24NNG
28. 30NNT

Pump Options: Clear Liquid Pumps

| Model | Disch. Size | Max. Cap. | Max. Solids | Max. Head | Max. Suction Lift | RPM |
|--------|-------------|-----------|-------------|-----------|-------------------|-------|
| 2.5RB | 2.5" | 400 gpm | .38" | 300' | 25' | 2,200 |
| 2.5H | 2.5" | 500 gpm | .41" | 360' | 25' | 2,200 |
| 2.5YH | 2.5" | 750 gpm | .41" | 310' | 28' | 3,000 |
| 3HC/HA | 3" | 1,050 gpm | .5" | 490' | 28' | 2,400 |
| 3RB | 3" | 800 gpm | .5" | 280' | 28' | 2,200 |
| 3YL/YH | 3" | 1,100 gpm | .5" | 245' | 28' | 2,700 |
| 4HC | 4" | 1,650 gpm | .62" | 470' | 28' | 2,150 |
| 4RB | 4" | 1,550 gpm | .84" | 270' | 25' | 2,200 |
| 5HH | 5" | 2,900 gpm | .75" | 375' | 25' | 2,000 |
| 5RB | 5" | 2,350 gpm | 1" | 360' | 25' | 2,400 |
| 5YBH | 5" | 2,500 gpm | .75" | 200' | 25' | 2,400 |
| 6HH | 6" | 4,000 gpm | 1.22" | 365' | 25' | 2,000 |
| 6RB | 6" | 4,250 gpm | 1.31" | 300' | 28' | 2,200 |
| 6YB | 6" | 4,100 gpm | .75" | 235' | 25' | 2,400 |
| 8H | 8" | 5,400 gpm | 1.25" | 305' | 25' | 2,000 |
| 10RB | 10" | 7,000 gpm | 1.25" | 300' | 25' | 2,200 |
| 10YB | 10" | 6,500 gpm | 1.38" | 200' | 25' | 2,300 |



Clear Liquid Redi-Prime® Curves



Redi-Prime® Model

1. 2.5RB
2. 2.5H
3. 2.5YH
4. 3HC/HA
5. 3RB
6. 3YL/YH
7. 4HC
8. 4RB
9. 5HH
10. 5RB
11. 5YBH
12. 6HH
13. 6RB
14. 6YB
15. 8H
16. 10RB
17. 10YB

10/15/03



COMMITMENT TO EXCELLENCE

Cornell Pump Company proudly maintains its ISO 9001:2000 certification which validates that Cornell is in compliance with all necessary processes to meet customer requirements.

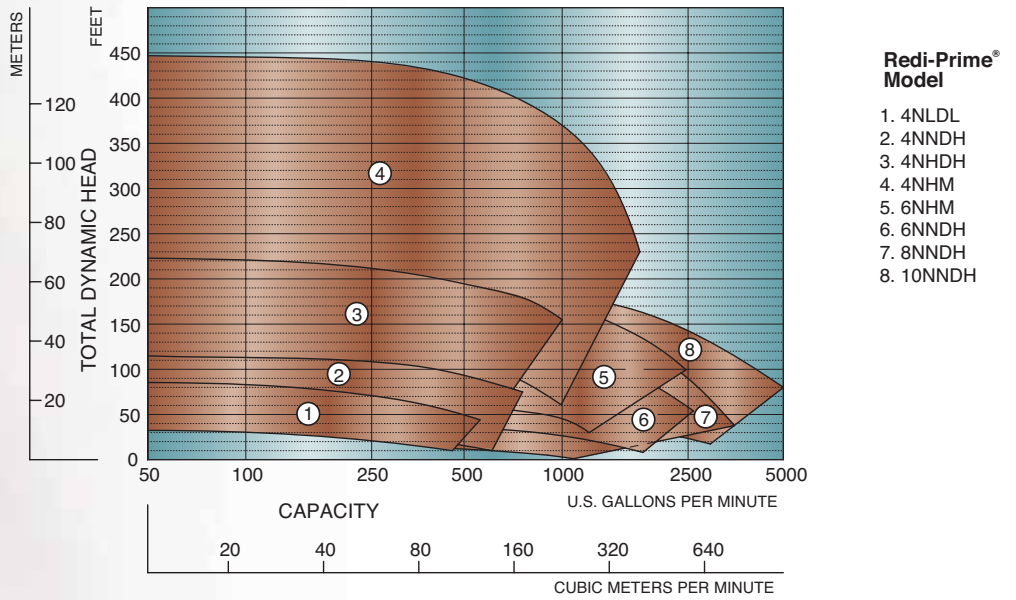
The elements associated with ISO 9001:2000 certification include such areas as contract review, design and development, production, purchasing, quality control and service.



Pump Options: Delta™ Impeller Pumps

| Model | Disch. Size | Max. Cap. | Max. Solids | Max. Head | Max. Suction Lift | Max. RPM |
|--------|-------------|-----------|-------------|-----------|-------------------|----------|
| 4NLDL | 4" | 525 gpm | 3" | 85' | 25' | 2,000 |
| 4NNDH | 4" | 750 gpm | 3" | 115' | 25' | 1,800 |
| 4NHDH | 4" | 1,050 gpm | 3" | 225' | 25' | 1,800 |
| 4NHM | 4" | 1,500 gpm | 2.5" | 380' | 25' | 2,200 |
| 6NHM | 6" | 2,500 gpm | 3" | 320' | 25' | 2,200 |
| 6NNDH | 6" | 2,400 gpm | 3" | 140' | 25' | 2,200 |
| 8NNDH | 8" | 1,625 gpm | 3.38" | 50' | 25' | 1,200 |
| 10NNDH | 10" | 5,000 gpm | 3.5" | 190' | 25' | 1,500 |

Solids Handling, Delta Impeller, Redi-Prime® Curves



10/31/06

CYCLOSEAL® & RUN-DRY™

Cornell's patented Cycloseal® design, with its unique deflector vanes, works with the impeller back vanes to create a cyclo-action. This action removes solids and abrasive materials from the seal area while purging air and gas pockets, extending seal life and eliminating any need for venting or waterflushing.

CYCLOSEAL® BENEFITS

Extended Seal Life: Cornell's Cycloseal® design has proven itself in the toughest applications from manure slurry to starch recovery to sewer bypass and mining applications – in some cases more than tripling the normally expected mechanical seal life.

RUN-DRY™ CAPABILITY

Cornell's Run-Dry™ system consists of an auxiliary gland which provides containment for an application-specific lubricant present at the inside diameter of the mechanical seal faces. This lubricant prevents dry running of the seal faces while priming, re-priming, and on standby. The Run-Dry™ gland is connected to a lubricant reservoir via inlet and outlet lines which are oriented tangentially to the pump shaft so that shaft rotation provides circulation and subsequent cooling of the lubricant.

