

Concertor™

6020.090/180



Table of Contents

1 Introduction.....	2
1.1 Specially approved products.....	2
2 Product Description.....	3
2.1 The data plate.....	3
2.2 Approvals.....	4
2.3 Product denomination.....	5
3 Exploded View.....	7
3.1 Drive unit.....	7
3.2 Hydraulic unit.....	8
3.3 Installation components.....	9
4 List of Parts.....	11
4.1 6020.090/180.....	11

1 Introduction

Purpose of this manual

The purpose of this manual is to provide necessary information on spare parts and accessories order.

Disclaimer

Always use genuine Flygt parts. The use of other spare parts or accessories can invalidate any claims for warranty or compensation. Xylem does not take any responsibility for damages that are caused by the use of non-original parts. For more information, contact your local sales and service representative.

Data for ordering spare parts

The following information is needed for spare part orders:

- Serial number of the product
- Part number
- Quantity of bulk material, see * in tables

1.1 Specially approved products

Qualification of personnel

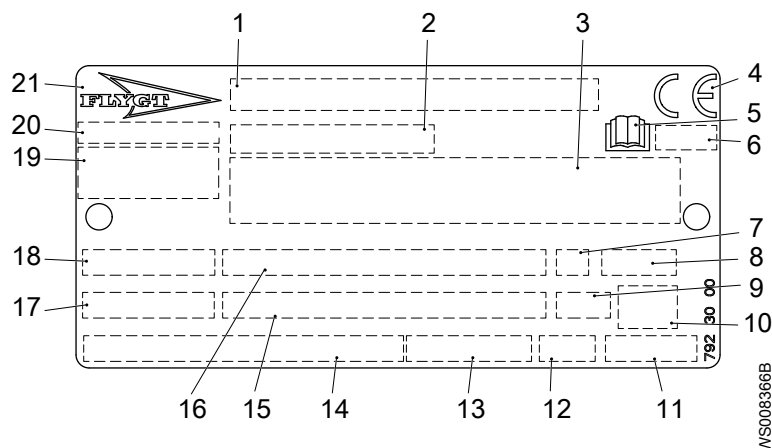
Only Xylem or Xylem-authorized service personnel may undertake repair work on specially approved products.

Dimensional accuracy inspection

Spare parts marked with (Ex) after the part number are subject to dimensional accuracy inspection when used in specially approved products.

2 Product Description

2.1 The data plate



1. Serial number, see [Product denomination](#) on page 5
2. Product number
3. Additional information
4. CE-marking
5. Read installation manual
6. Notified body (only for EN-approved Ex products)
7. Duty class
8. Degree of protection
9. Thermal class
10. Maximum submergence
11. Product weight
12. Direction of rotation: L=left, R=right
13. Nominal motor speed
14. Minimum rated voltage/rated current - maximum rated voltage/rated current
15. Maximum ambient temperature (2), rated shaft power (2)
16. Maximum ambient temperature (1), rated shaft power (1)
17. Power factor
18. Phase, type of current, frequency
19. Manufacturer
20. Country of origin
21. Brand

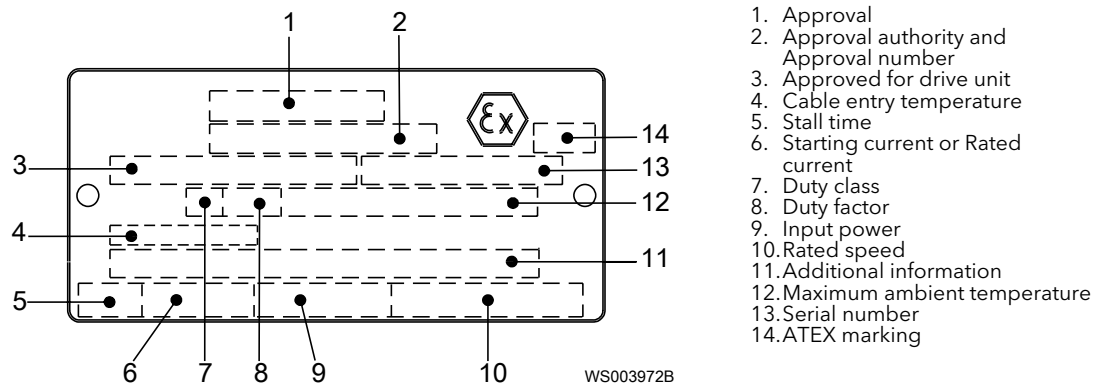
2.2 Approvals

Product approvals for hazardous locations

Pump	Approval
6020.090	European Norm (EN) <ul style="list-style-type: none"> • ATEX Directive • EN 60079-0:2012/A11:2013, EN 60079-1:2007, EN 13463-1:2009, EN 13463-5:2011 • Ex II 2 G c Ex d IIB T4 Gb
	IEC <ul style="list-style-type: none"> • IECEx scheme • IEC 60079-0, IEC 60079-1 • Ex d IIB T4 Gb
	FM (FM Approvals) <ul style="list-style-type: none"> • FM 3600:2011 • FM 3615:2005 • FM 3650:2013 • FM 3810:2005 • ANSI/ISA 61010-1:2012 • ANSI/IEC 60529:2004 • Explosion proof for use in Class I, Div. 1, Group C and D • Dust ignition proof for use in Class II, Div. 1, Group E, F and G • Suitable for use in Class III, Div. 1, Hazardous Locations

EN approval plate

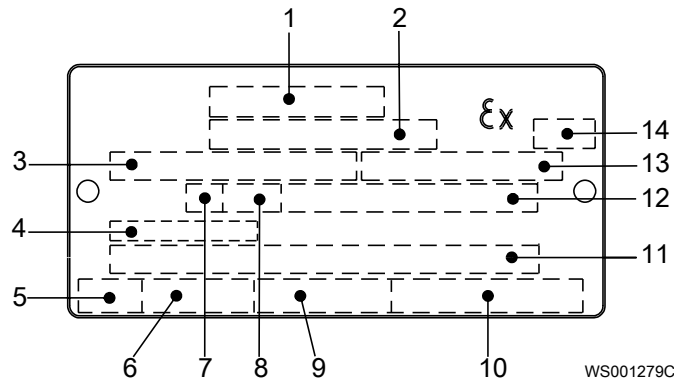
This illustration describes the EN approval plate and the information that is contained in its fields.



IEC approval plate

This illustration describes the IEC approval plate and the information that is contained in its fields.

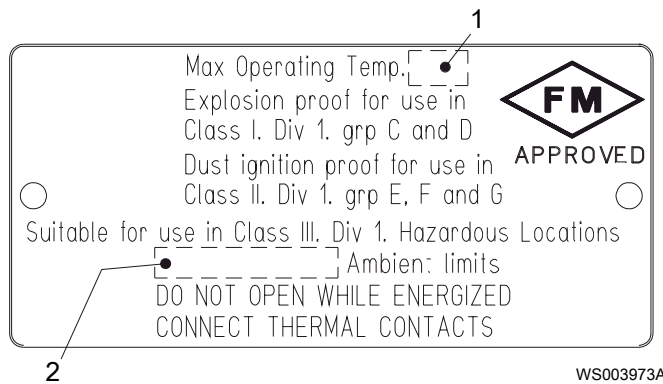
International Norm; not for EU member countries.



1. Approval
2. Approval authority and Approval number
3. Approved for drive unit
4. Cable entry temperature
5. Stall time
6. Starting current or Rated current
7. Duty class
8. Duty factor
9. Input power
10. Rated speed
11. Additional information
12. Maximum ambient temperature
13. Serial number
14. ATEX marking

FM approval plate

This illustration describes the FM approval plate and the information that is contained in its fields.



1. Temperature class
2. Maximum ambient temperature

2.3 Product denomination

Reading instruction

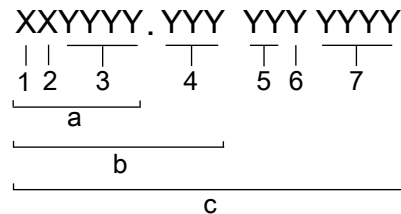
In this section, code characters are illustrated accordingly:

X = letter

Y = digit

The different types of codes are marked up with a, b and c. Code parameters are marked up with numbers.

Codes and parameters

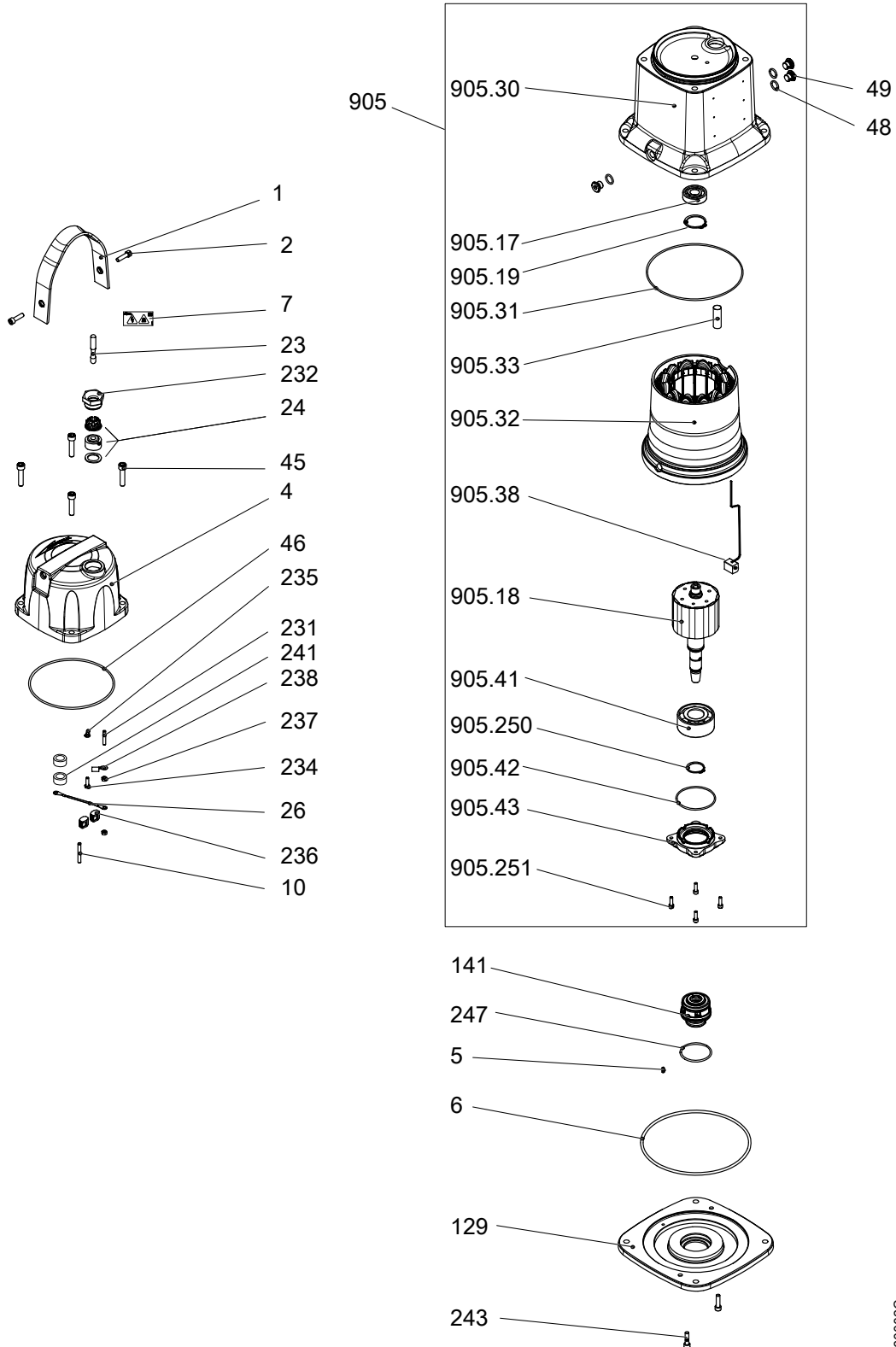


Type of Callout	Number	Indication
Type of code	a	Sales denomination
	b	Product code
	c	Serial number

Type of Callout	Number	Indication
Parameter	1	Hydraulic end
	2	Type of installation
	3	Sales code
	4	Version
	5	Production year
	6	Production cycle
	7	Running number

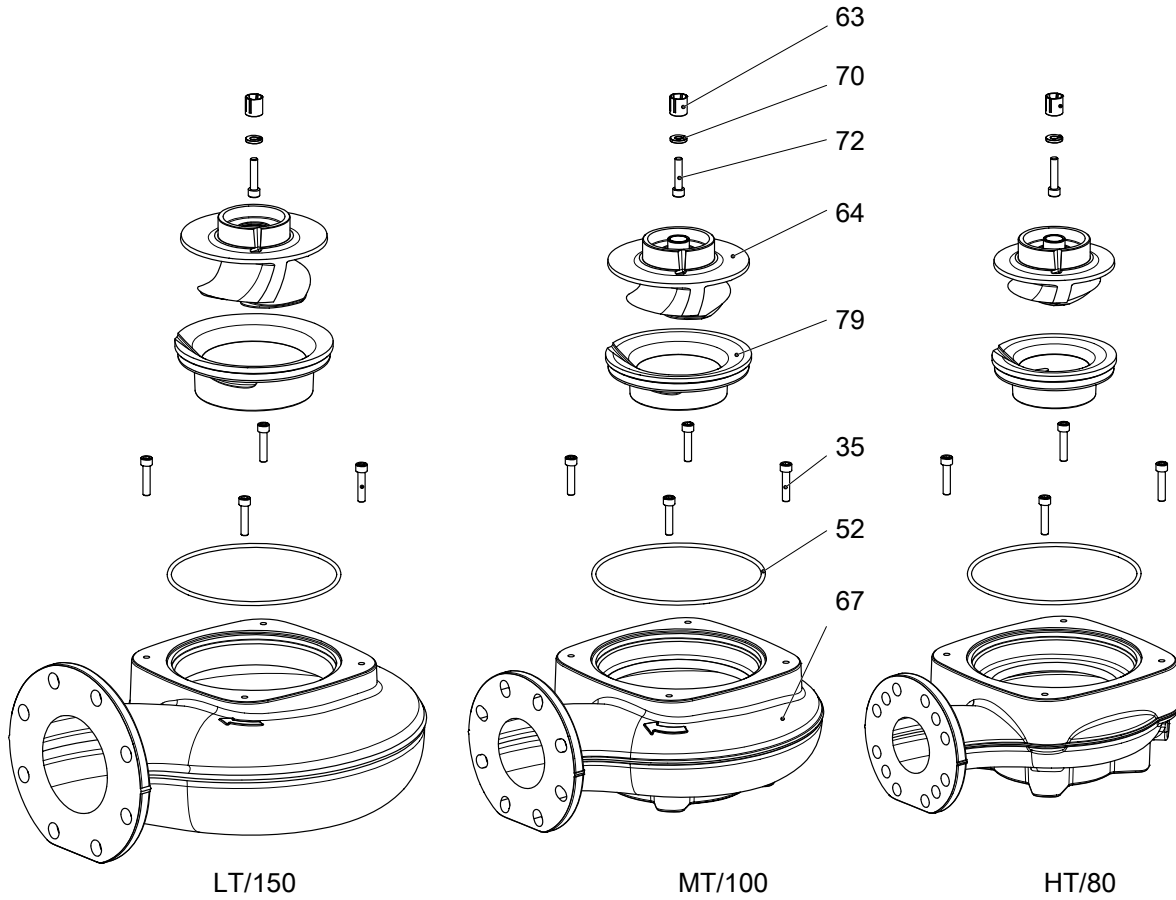
3 Exploded View

3.1 Drive unit



60002C

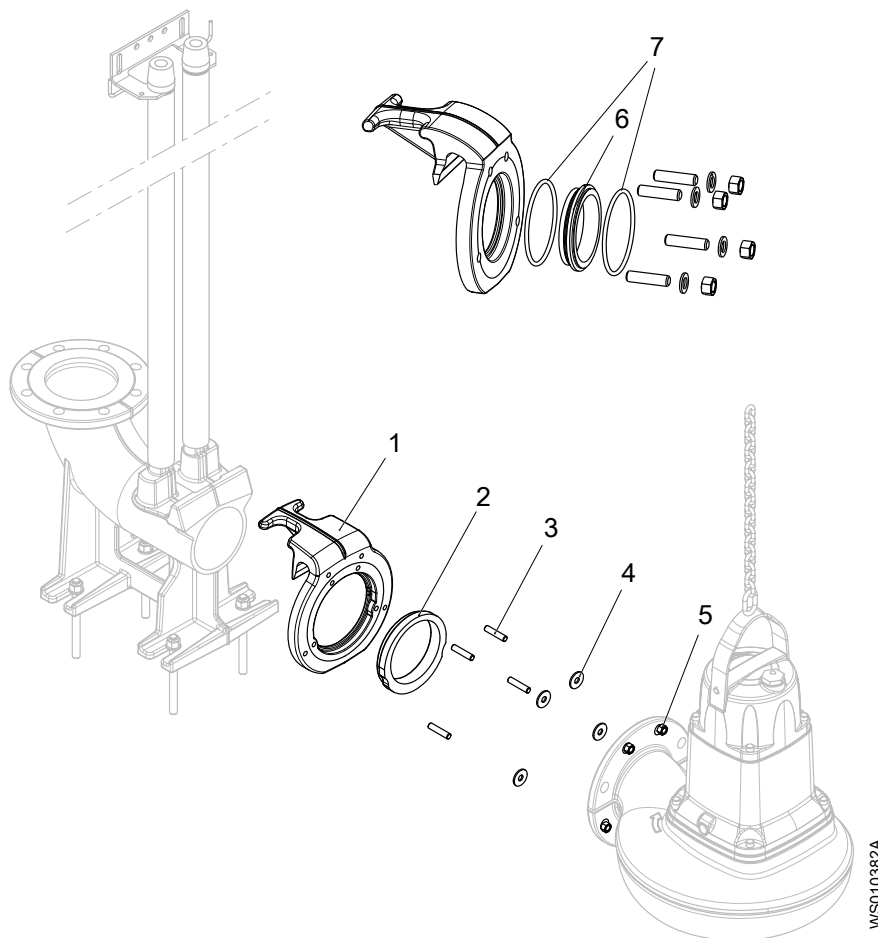
3.2 Hydraulic unit



60003A

3.3 Installation components

NP



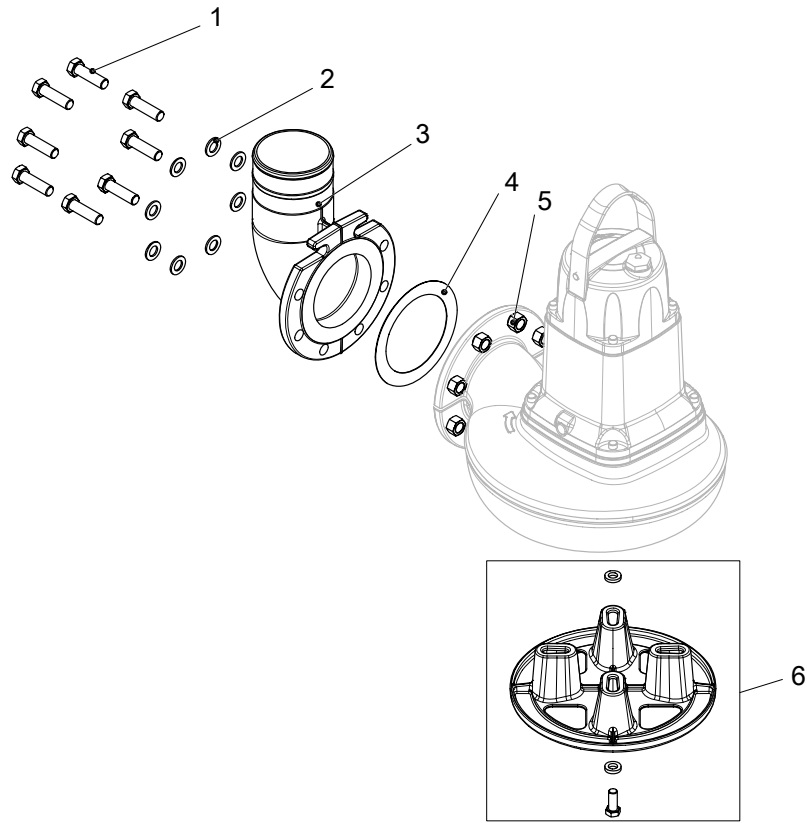
- 1. Sliding bracket
- 2. Seal ring, rubber
- 3. Stud
- 4. Washer
- 5. Nut
- 6. Seal ring, metal
- 7. O-rings

Installation kits for guide system 2 in.

Part no	Description	Pump outlet	Discharge connection inlet	Sliding bracket drilling pattern
748 18 14	Metal-to-metal	DN 80	80	DN 80
748 18 10	Rubber seal ring			
748 18 24	Metal-to-metal	DN 100	100 ¹	DN 100, DN 80
748 18 23	Rubber seal ring			
748 18 24	Metal-to-metal	DN 100	100	DN 100, DN 80
748 18 23	Rubber seal ring			
748 18 34	Metal-to-metal			
748 18 33	Rubber seal ring	DN 150	150 ¹	DN 150, DN 100
748 18 34	Metal-to-metal			
748 18 33	Rubber seal ring	150	150	DN 150, DN 100

¹ Power limitations apply. Contact the local sales and service representative.

NS



WS010381A

- 1. Hexagon head screw
- 2. Washer
- 3. Discharge bend
- 4. Gasket
- 5. Bolt
- 6. Stand

Part no	Description	Pump outlet
748 19 30	Hose 75 mm	DN 80
748 19 64	Thread ISO G3	
748 19 63	NPT 3-8	
748 19 40	Hose 100 mm	DN 100
748 19 76	Thread ISO G4	
748 19 75	NPT 4-8	
748 19 50	Hose 150 mm	DN 150
748 19 81	Thread ISO G6	
748 19 80	NPT 6-8	

4 List of Parts

4.1 6020.090/180

Pos. No	Part. No	Type	Denomination	Qty/Version	
				090	180
1	797 37 00		Lifting handle	1	1
2	83 03 02		Hex.socket hd screw M8X30-A4-70	2	2
3	792 30 00		Data plate	2	2
4	801 23 08		Connect. hous.unit Dirigo (TM): Combined motor and control system with temperature monitoring Leakage sensor in stator housing: FLS Maximum power: 2,20 kW / 3 HP Maximum current: 4,70 A Voltage interval: 380- 480 V For submerged installation		1
4	801 23 09		Connect. hous.unit Dirigo (TM): Combined motor and control system with temperature monitoring Leakage sensor in stator housing: FLS Maximum power: 4 kW / 5 HP Maximum current: 7,50 A Voltage interval: 380- 480 V For submerged installation		1
4	801 23 10		Connect. hous.unit Dirigo (TM): Combined motor and control system with temperature monitoring Leakage sensor in stator housing: FLS Maximum power: 5,50 kW / 7,50 HP Maximum current: 10 A Voltage interval: 380- 480 V For submerged installation		1
4	801 23 11		Connect. hous.unit Dirigo (TM): Combined motor and control system with temperature monitoring Leakage sensor in stator housing: FLS Maximum power: 7,30 kW / 10 HP Maximum current: 13,10 A Voltage interval: 380- 480 V For submerged installation		1
5	80 58 97		Tension pin	1	1
6	82 74 95		O-ring 219.3X5.7 NBR	1	1
7	726 37 00		Caution label	1	1
9	82 20 88		Drive screw 4X5-A2/A4	2	2
10	94 05 80		Insulating hose D=4 MM	*	*
17	801 23 20		Connect. hous.unit Dirigo (TM): Combined motor and control system with temperature monitoring Leakage sensor in stator housing: FLS Maximum power: 2,20 kW / 3 HP Maximum current: 4,70 A Voltage interval: 380- 480 V For submerged installation	1	

Pos. No	Part. No	Type	Denomination	Qty/Version	
				090	180
17	801 23 21		Connect. hous.unit Dirigo (TM): Combined motor and control system with temperature monitoring Leakage sensor in stator housing: FLS Maximum power: 4 kW / 5 HP Maximum current: 7,50 A Voltage interval: 380- 480 V For submerged installation	1	
17	801 23 22		Connect. hous.unit Dirigo (TM): Combined motor and control system with temperature monitoring Leakage sensor in stator housing: FLS Maximum power: 5,50 kW / 7,50 HP Maximum current: 10 A Voltage interval: 380- 480 V For submerged installation	1	
17	801 23 23		Connect. hous.unit Dirigo (TM): Combined motor and control system with temperature monitoring Leakage sensor in stator housing: FLS Maximum power: 7,30 kW / 10 HP Maximum current: 13,10 A Voltage interval: 380- 480 V For submerged installation	1	
23	94 19 90		Motor cable subcab S3X2.5+3X2.5/3+S(4X0.5)	*	*
23	94 19 91		Motor cable subcab S3X6+3X6/3+S(4X0.5)	*	*
24	638 27 04	(Ex)	Cable entry unit (18)-20 MM NBR Cable and cable entry SUBCAB S3x2.5+3x2.5/3+S(4x0.5)	1	1
24	638 27 05	(Ex)	Cable entry unit 20-(22)MM NBR Cable and cable entry SUBCAB S3x6+3x6/3+S(4x0,5)	1	1
25	573 58 20		Single-core cable	1	1
26	573 58 70		Single-core cable	4	4
35	83 03 27		Hex.socket hd screw M10X45-A4-70	4	4
45	83 03 27		Hex.socket hd screw M10X45-A4-70	4	4
46	85 03 32		O-ring	1	1
47	443 49 00		Sleeve	1	1
48	82 76 85		O-ring 17X3 NBR	2	3
49	642 13 00		Plug	2	3
52	82 74 95		O-ring 219.3X5.7 NBR	1	1
63	782 72 02		Clamping sleeve	1	1
64	800 52 10		Impeller unit Pressure characteristic: LT Material: CI impeller / CI Insert ring	1	1
64	800 52 00		Impeller unit Pressure characteristic: LT Material: HI impeller / HI Insert ring	1	1
64	800 52 20		Impeller unit Pressure characteristic: LT Material: SS impeller / CI Insert ring	1	1
64	800 40 10		Impeller unit Pressure characteristic: MT Material: CI impeller / CI Insert ring	1	1
64	800 40 00		Impeller unit Pressure characteristic: MT Material: HI impeller / HI Insert ring	1	1
64	800 40 20		Impeller unit Pressure characteristic: MT Material: SS impeller / CI Insert ring	1	1

Pos. No	Part. No	Type	Denomination	Qty/Version		
				090	180	
64	800 51 10		Impeller unit	Pressure characteristic: HT Material: CI impeller / CI Insert ring	1	1
64	800 51 00		Impeller unit	Pressure characteristic: HT Material: HI impeller / HI Insert ring	1	1
64	800 51 20		Impeller unit	Pressure characteristic: HT Material: SS impeller / CI Insert ring	1	1
67	795 38 00		Pump housing	Pressure Characteristic: LT Outlet diameter: 150 mm	1	1
67	795 35 00		Pump housing	Pressure Characteristic: MT Outlet diameter: 100 mm	1	1
67	795 32 00		Pump housing	Pressure Characteristic: HT Outlet diameter: 80 mm	1	1
70	338 13 11		Plain washer 10.5X23.5X4		1	1
72	83 03 27		Hex.socket hd screw M10X45-A4-70		1	1
72	82 00 55		Hex.socket hd screw M10X45-A2-70		1	
79	811 65 00		Insert ring	Pressure characteristic: LT Material: CI impeller / CI Insert ring	1	1
				Pressure characteristic: LT Material: SS impeller / CI Insert ring		
79	795 39 00		Insert ring	Pressure characteristic: LT Material: HI impeller / HI Insert ring	1	
79	811 64 00		Insert ring	Pressure characteristic: MT Material: CI impeller / CI Insert ring	1	1
				Pressure characteristic: MT Material: SS impeller / CI Insert ring		
79	795 36 00		Insert ring	Pressure characteristic: MT Material: HI impeller / HI Insert ring	1	
79	811 63 00		Insert ring	Pressure characteristic: HT Material: CI impeller / CI Insert ring	1	1
				Pressure characteristic: HT Material: SS impeller / CI Insert ring		
79	795 33 00		Insert ring	Pressure characteristic: HT Material: HI impeller / HI Insert ring	1	
80	82 97 70		Cap 20X36 MM PVC	Cable and cable entry SUBCAB S3x2.5+3x2.5/3+S(4x0.5)	1	1
80	82 97 72		Cap 22X45 MM PVC	Cable and cable entry SUBCAB S3x6+3x6/3+S(4x0,5)	1	1
129	797 45 01	(Ex)	Seal housing cover		1	
129	797 45 00		Seal housing cover			1
141	769 87 35		Mechanical seal	Material inner seal: Cemented carbide (WCCR) - Cemented carbide (WCCR) Material outer seal: Cemented carbide (WCCR) - Cemented carbide (WCCR)	1	1
141	769 87 36		Mechanical seal	Material inner seal: Cemented carbide (WCCR) - Cemented carbide (WCCR) Material outer seal: Silicone carbide (RSiC) - Silicone carbide (RSiC)	1	1
166	791 48 01		Connection plate		1	1
169	667 40 00		Sticker		2	2

Pos. No	Part. No	Type	Denomination	Qty/Version	
				090	180
231	84 45 41		Stud	1	1
232	397 81 00		Gland screw Pr 37	1	1
234	81 48 28		Hexagon head screw M6X20-A4-70	2	2
235	83 43 58		Cable lug UL/CSA 1.04-2.62 MM2 M6	2	2
235	83 43 58		Cable lug UL/CSA 1.04-2.62 MM2 M6	1	1
236	83 42 67		Terminal block 600V/20A UL	2	2
237	82 23 31		Hexagon nut M6-A4-70	2	2
238	83 43 59		Cable lug UL/CSA 2.62-6.64 MM2 M6	1	1
239	82 00 30		Hex.socket hd screw M8X16-A2-70	1	
241	83 95 06		Electrical filter	2	2
243	83 04 48		Hex.socket hd screw M8X20-A4-80	8	
243	83 03 02		Hex.socket hd screw M8X30-A4-70		2
247	81 78 98		O-ring 61.91X3.53 NBR	1	1
800	85 02 57		O-ring kits	1	1
900	810 97 00		Basic repair kit	1	1
901	90 17 52		Oil ISO VG 32	*	1
905	801 24 10		Motor unit	1	1
905,17	83 33 13		Ball bearing 20X52X15 MM	1	1
905,18	803 81 00		Shaft unit	1	1
905,30	797 48 01		Cooling jacket	1	1
905,31	82 78 37		O-ring 200X3-1 NBR	1	1
905,32	803 82 00		Stator housing unit	1	1
905,33	94 05 88		Insulating hose D=16 MM	*	*
905,38	518 89 03		Leakage sensor	1	1
905,41	83 30 17		Ball bearing 35X80X34.9 MM	1	1
905,42	82 74 68		O-ring 74.5X3.0 NBR	1	1
905,43	797 44 00		Bearing cover	1	1
905,250	82 59 03		Retaining ring SGA 35	1	1
905,251	82 00 15		Hex.socket hd screw M6X20-A2-70	4	1