

## Flygt 4410



# Table of Contents

|                                      |           |
|--------------------------------------|-----------|
| <b>1 Introduction.....</b>           | <b>2</b>  |
| 1.1 Specially approved products..... | 2         |
| <b>2 Product Description.....</b>    | <b>3</b>  |
| 2.1 The data plate.....              | 3         |
| 2.2 Approvals.....                   | 3         |
| 2.3 Product denomination.....        | 4         |
| <b>3 Exploded View.....</b>          | <b>6</b>  |
| 3.1 Drive unit.....                  | 6         |
| 3.2 Hydraulic unit.....              | 7         |
| 3.3 Installation components.....     | 8         |
| <b>4 List of Parts.....</b>          | <b>11</b> |
| 4.1 4410.011/090.....                | 11        |

# 1 Introduction

## Purpose of this manual

The purpose of this manual is to provide necessary information on spare parts and accessories order.

## Disclaimer

Always use genuine Flygt parts. The use of other spare parts or accessories can invalidate any claims for warranty or compensation. Xylem does not take any responsibility for damages that are caused by the use of non-original parts. For more information, contact your local sales and service representative.

## Data for ordering spare parts

The following information is needed for spare part orders:

- Serial number of the product
- Part number
- Quantity of bulk material, see \* in tables

## 1.1 Specially approved products

### Qualification of personnel

Only Xylem or Xylem-authorized service personnel may undertake repair work on specially approved products.

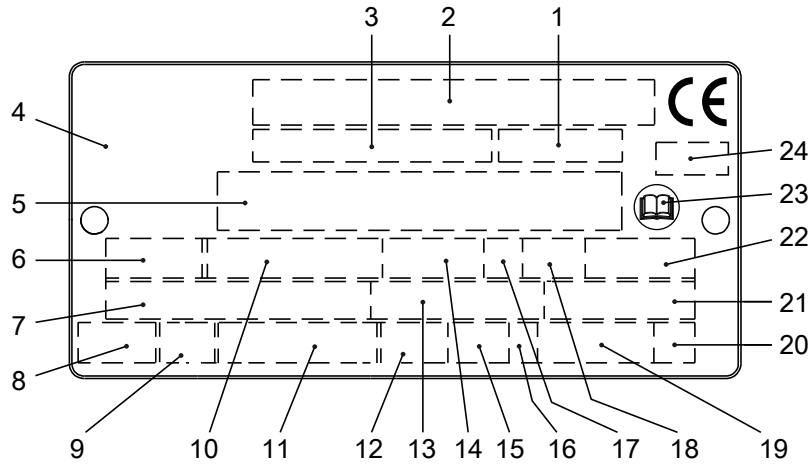
### Dimensional accuracy inspection

Spare parts marked with (Ex) after the part number are subject to dimensional accuracy inspection when used in specially approved products.

# 2 Product Description

## 2.1 The data plate

The data plate is a metal label that is located on the main body of the products. The data plate lists key product specifications. Specially approved products also have an approval plate.



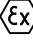
WIS006257A

1. Curve code or Propeller code
2. Serial number
3. Product number
4. Country of origin
5. Additional information
6. Phase; type of current; frequency
7. Rated voltage
8. Thermal protection
9. Thermal class
10. Rated shaft power
11. International standard
12. Degree of protection
13. Rated current
14. Rated speed
15. Maximum submergence
16. Direction of rotation: L=left, R=right
17. Duty class
18. Duty factor
19. Product weight
20. Locked rotor code letter
21. Power factor
22. Maximum ambient temperature
23. Read installation manual
24. Notified body, only for EN-approved Ex products

Figure 1: The data plate

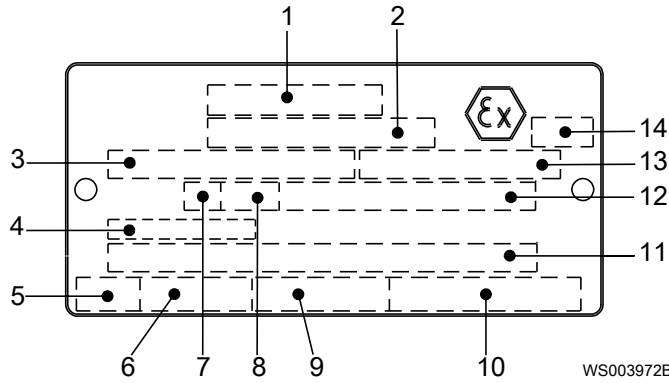
## 2.2 Approvals

Product approvals for hazardous locations

| Product  | Approval  |
|----------|---|
| 4410.090 | European Norm (EN) <ul style="list-style-type: none"> <li>• ATEX Directive</li> <li>• EN 60079-0:2012/A11:2013, EN 60079-1:2007, EN 13463-1:2009, EN 13463-5:2011</li> <li>•  II 2 G c Ex d IIB T4 Gb</li> </ul> |
|          | IEC <ul style="list-style-type: none"> <li>• IECEx scheme</li> <li>• IEC 60079-0, IEC 60079-1</li> <li>• Ex d IIB T4 Gb</li> </ul>  |

### EN approval plate

This illustration describes the EN approval plate and the information that is contained in its fields.

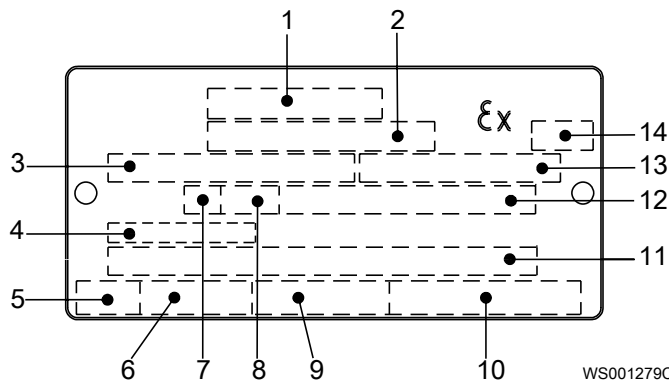


1. Approval
2. Approval authority and Approval number
3. Approved for drive unit
4. Cable entry temperature
5. Stall time
6. Starting current or Rated current
7. Duty class
8. Duty factor
9. Input power
10. Rated speed
11. Additional information
12. Maximum ambient temperature
13. Serial number
14. ATEX marking

### IEC approval plate

This illustration describes the IEC approval plate and the information that is contained in its fields.

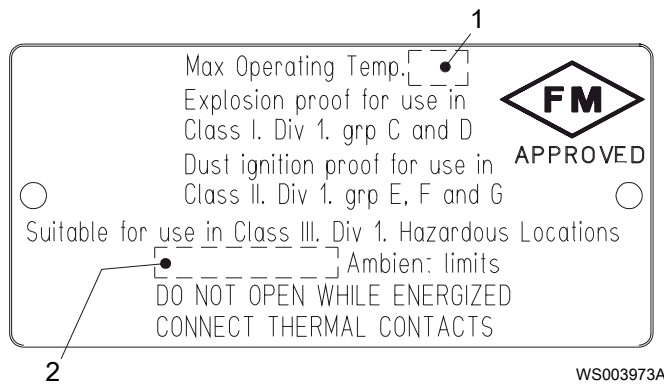
International Norm; not for EU member countries.



1. Approval
2. Approval authority and Approval number
3. Approved for drive unit
4. Cable entry temperature
5. Stall time
6. Starting current or Rated current
7. Duty class
8. Duty factor
9. Input power
10. Rated speed
11. Additional information
12. Maximum ambient temperature
13. Serial number
14. ATEX marking

### FM approval plate

This illustration describes the FM approval plate and the information that is contained in its fields.



1. Temperature class
2. Maximum ambient temperature

## 2.3 Product denomination

### Reading instruction

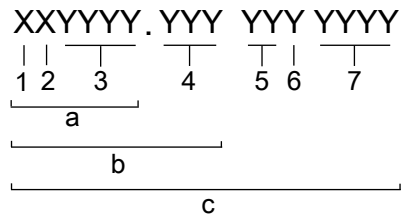
In this section, code characters are illustrated accordingly:

X = letter

Y = digit

The different types of codes are marked up with a, b and c. Code parameters are marked up with numbers.

Codes and parameters

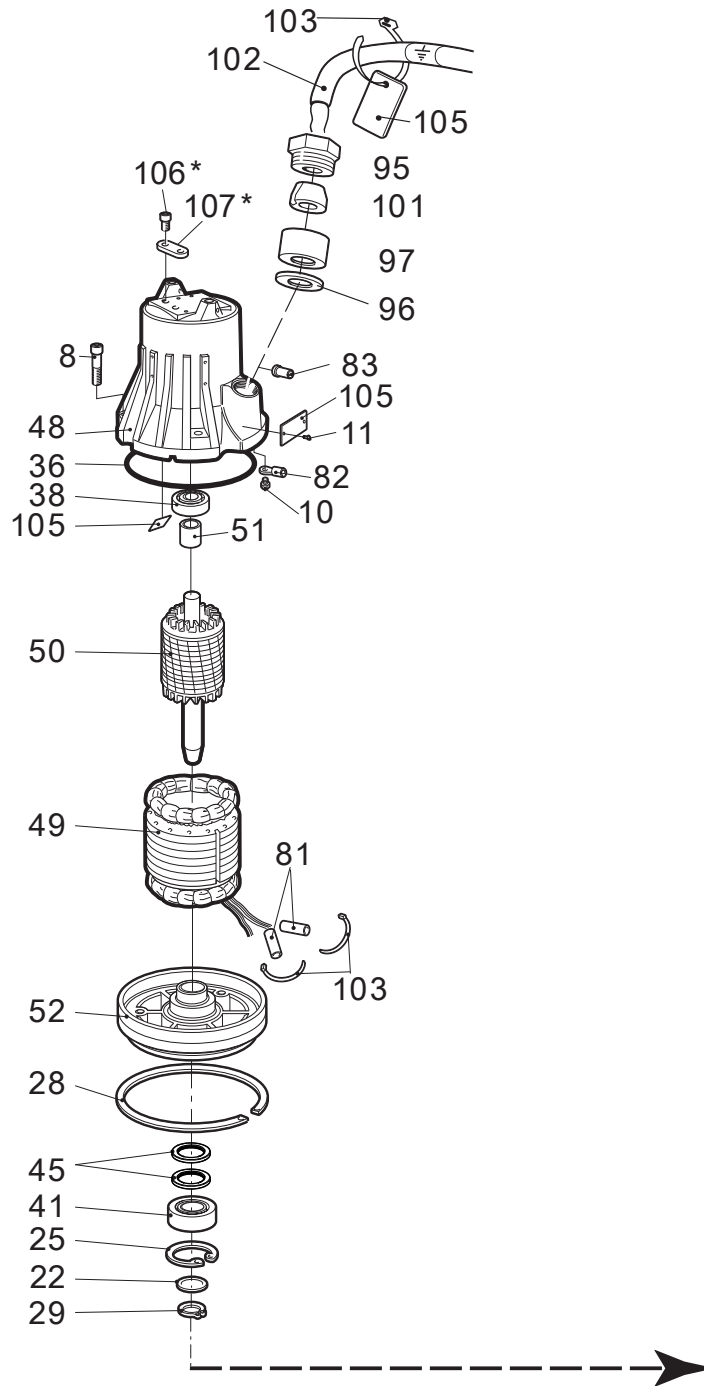


| Type of Callout | Number | Indication           |
|-----------------|--------|----------------------|
| Type of code    | a      | Sales denomination   |
|                 | b      | Product code         |
|                 | c      | Serial number        |
| Parameter       | 1      | Hydraulic end        |
|                 | 2      | Type of installation |
|                 | 3      | Sales code           |
|                 | 4      | Version              |
|                 | 5      | Production year      |
|                 | 6      | Production cycle     |
|                 | 7      | Running number       |

# 3 Exploded View

## 3.1 Drive unit

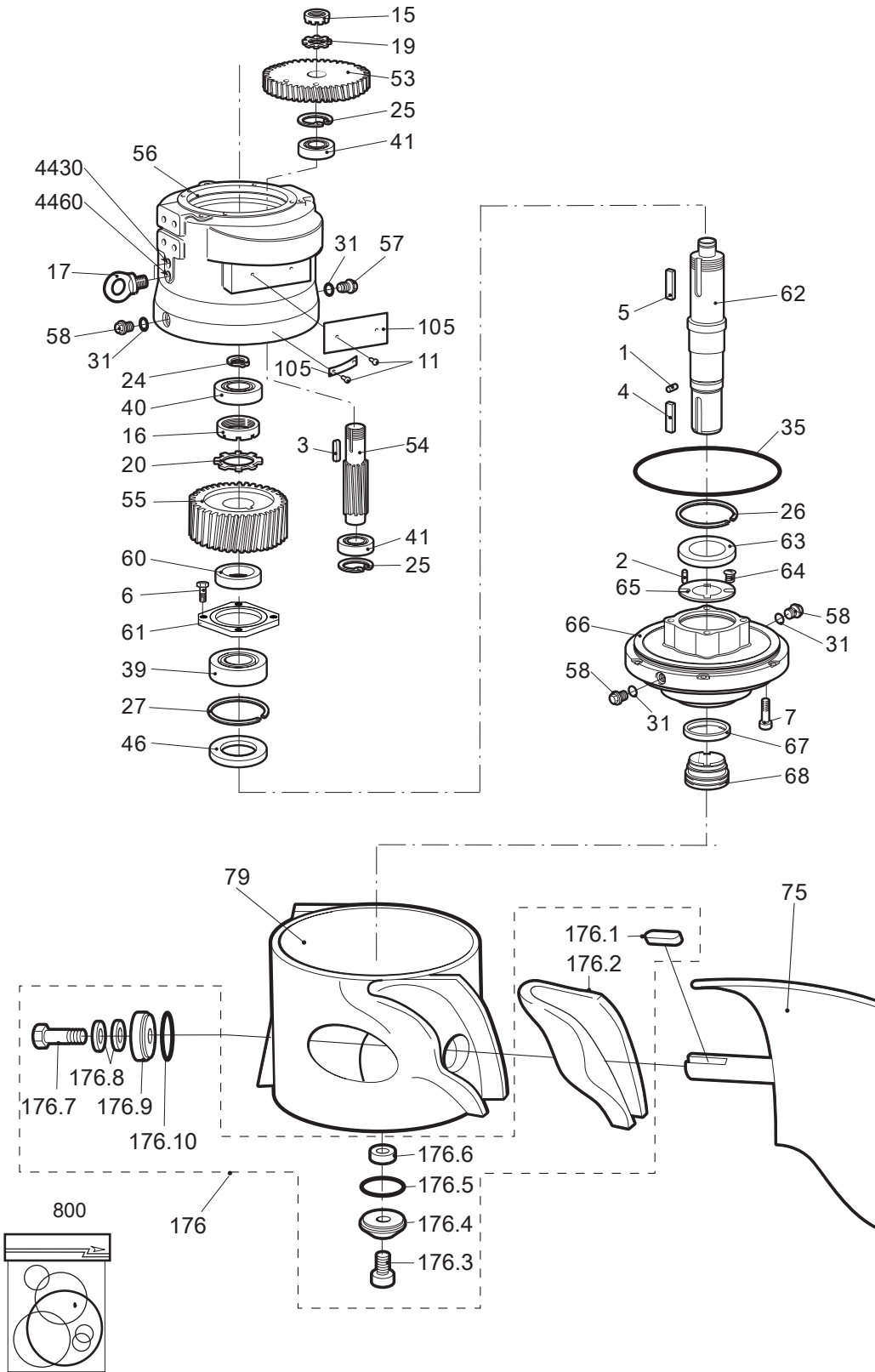
4410



\* Ex

40918B

### 3.2 Hydraulic unit

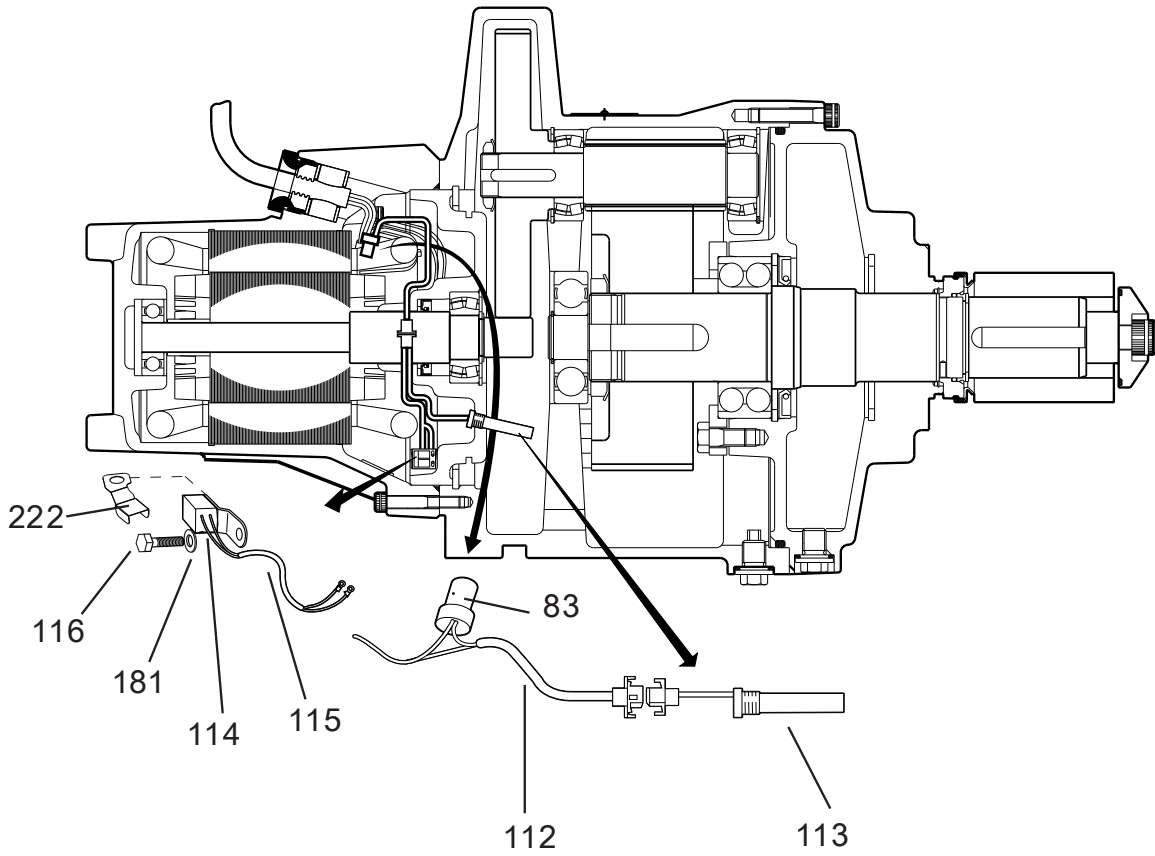


4079 1D



### 3.3 Installation components

4410 /4430 /4460 /4530



40822E

Figure 2: Leakage sensors

4410 / 4430 / 4460

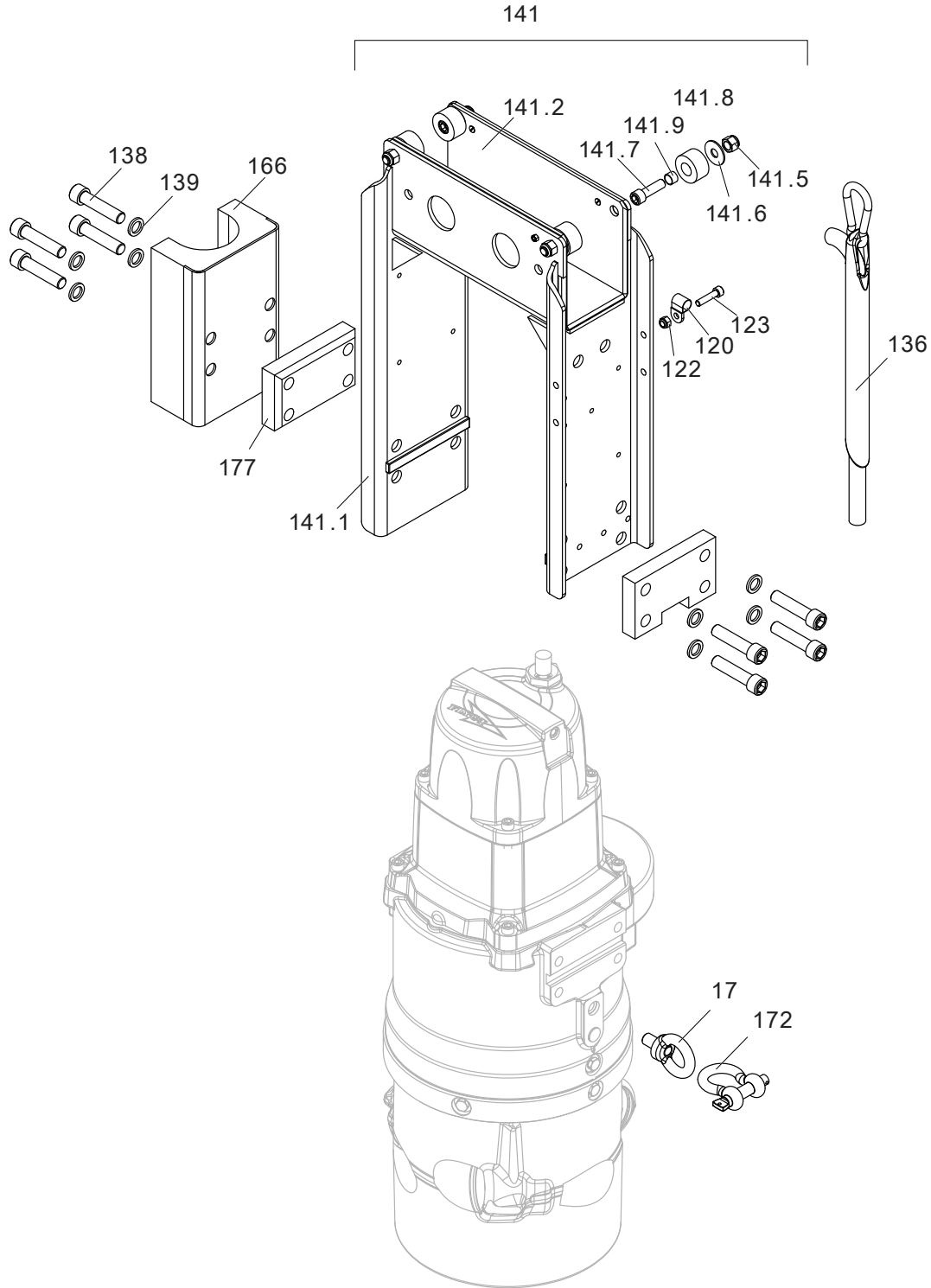


Figure 3: Tripod guide bar

4060 8G

4410 / 4430 / 4460

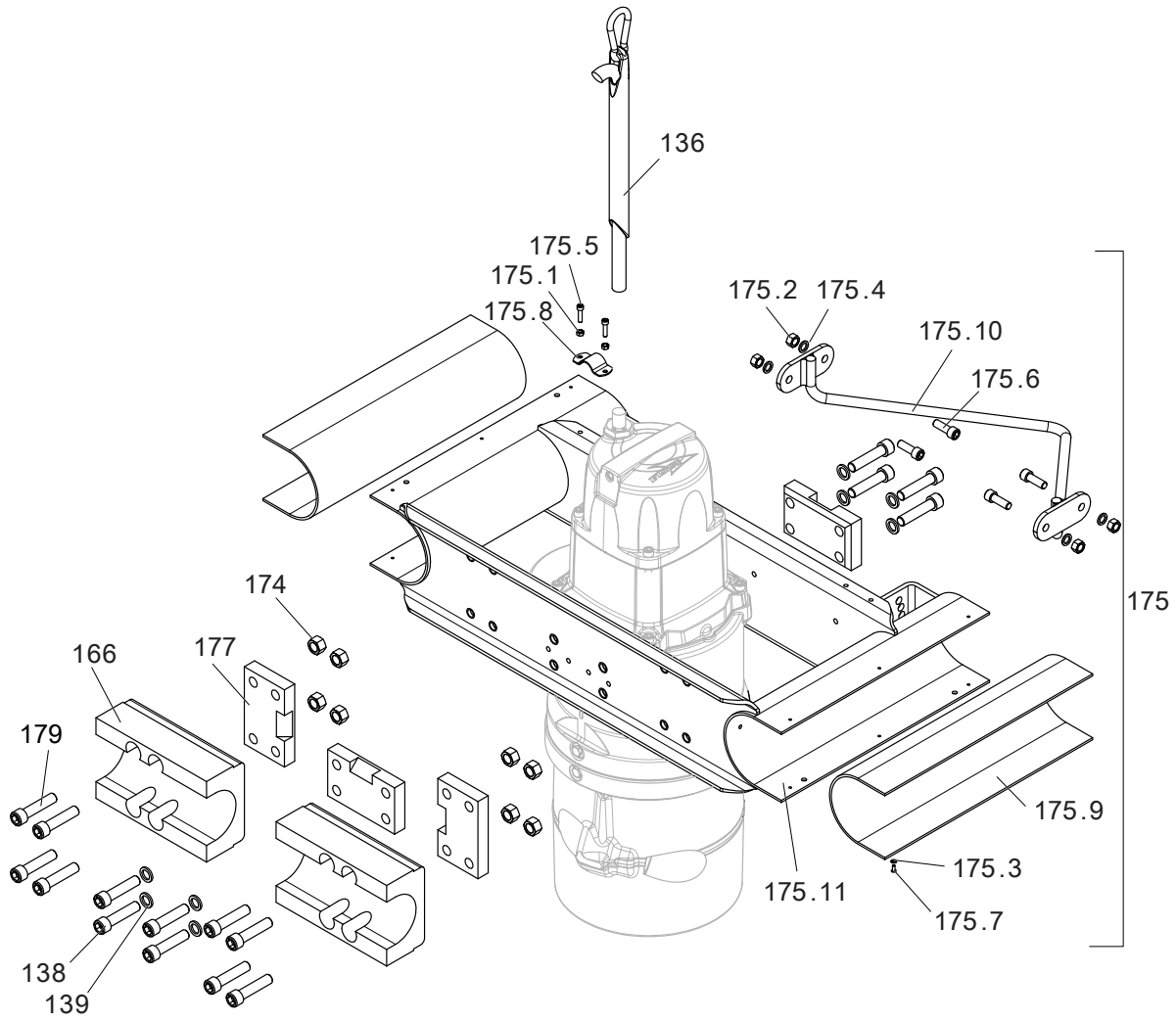


Figure 4: Double guide bar

40614E

# 4 List of Parts

## 4.1 4410.011/090

| Pos. No | Part. No  | Type | Denomination  | Qty/Version |     |
|---------|-----------|------|---|-------------|-----|
|         |           |      |   | 011         | 090 |
| 1       | 80 23 05  |      | Parallel pin CP-H8-4X10-1650  | 1           | 1   |
| 2       | 80 57 71  |      | Tension pin   | 2           | 2   |
| 3       | 80 70 62  |      | Parallel key 8H9X7H11X40  | 1           | 1   |
| 4       | 80 46 27  |      | Parallel key 14H9X9H11X70   | 1           | 1   |
| 5       | 80 46 31  |      | Parallel key 18H9X11H11X56  | 1           | 1   |
| 6       | 81 41 54  |      | Hexagon head screw M12X25-A2-70   | 4           | 4   |
| 7       | 83 03 27  |      | Hex.socket hd screw M10X45-A4-70  | 6           | 6   |
| 8       | 83 03 06  |      | Hex.socket hd screw M8X50-A4-70   | 4           | 4   |
| 10      | 82 17 61  |      | Cutting screw TAPTITE-M6X12   | 2           | 2   |
| 11      | 82 20 88  |      | Drive screw 4X5-A2/A4   | 6           | 10  |
| 15      | 82 22 31  |      | Round nut M30X1.5   | 1           | 1   |
| 16      | 82 22 37  |      | Round nut M60X2   | 1           | 1   |
| 17      | 82 31 15  |      | Lifting eye bolt  | 1           | 1   |
| 19      | 82 51 31  |      | Lock washer   | 1           | 1   |
| 20      | 82 51 37  |      | Lock washer   | 1           | 1   |
| 22      | 82 44 09  |      | Supporting washer 25X35X2   | 1           | 1   |
| 22      | 82 44 11  |      | Supporting washer 28X40X2   | 1           | 1   |
| 24      | 82 59 00  |      | Retaining ring SGA 30   | 1           | 1   |
| 25      | 82 62 12  |      | Retaining ring SGH 62   | 3           | 3   |
| 26      | 82 62 30  |      | Retaining ring SGH 105  | 1           | 1   |
| 27      | 82 62 32  |      | Retaining ring SGH 110  | 1           | 1   |
| 28      | 82 62 51  |      | Retaining ring SGH 200  | 1           | 1   |
| 29      | 82 58 95  |      | Retaining ring SGA 24   | 1           | 1   |
| 29      | 82 58 97  |      | Retaining ring SGA 26   | 1           | 1   |
| 31      | 82 73 90  |      | O-ring 19.2X3 NBR   | 5           | 5   |
| 35      | 82 75 00  |      | O-ring 269.3X5.7 NBR  | 1           | 1   |
| 36      | 82 78 37  |      | O-ring 200X3-1 NBR  | 1           | 1   |
| 38      | 83 33 13  |      | Ball bearing 20X52X15 MM  | 1           | 1   |
| 39      | 83 36 42  |      | Ball bearing 3212 60X110X36.5   | 1           | 1   |
| 40      | 83 34 78  |      | Ball bearing 6406 30X90X23  | 1           | 1   |
| 41      | 83 35 72  |      | Roller bearing 22206 CC 30X62X20  | 3           | 3   |
| 45      | 82 85 69  |      | Seal ring   | 2           | 2   |
| 46      | 82 85 52  |      | Seal ring 70X110X8 NITRIL   | 1           | 1   |
| 48      | 556 15 02 |      | Stator housing  | 1           |     |
| 48      | 556 15 05 | (Ex) | Stator housing  |             | 1   |
| 49      | 408 40 12 |      | Stator 15-10-4a<br>60 Hz 4-poles 440V-460V YSER<br>220V-230V Y// P2=2,60kW/3,50hp | 1           | 1   |

| Pos. No | Part. No  | Type | Denomination  | Qty/Version |     |
|---------|-----------|------|---|-------------|-----|
|         |           |      |   | 011         | 090 |
| 49      | 408 40 68 |      | Stator 15-10-4a<br>50 Hz 4-poles 190V-200V Y<br>P2=2,30kW<br>60 Hz 4-poles 200V-220V Y<br>P2=2,60kW/3,50hp  | 1           | 1   |
| 49      | 408 40 62 |      | Stator 15-10-4a<br>50 Hz 4-poles 400V Y 230V D<br>P2=2,30kW<br>50 Hz 4-poles 380V Y 220V D<br>P2=2,30kW<br>60 Hz 4-poles 440V-460V Y 260V D<br>P2=2,60kW/3,50hp | 1           | 1   |
| 49      | 408 40 66 |      | Stator 15-10-4a<br>50 Hz 4-poles 346V-350V Y<br>200V-208V D P2=2,30kW<br>60 Hz 4-poles 230V-240V D 400V Y<br>P2=2,60kW/3,50hp                                   | 1           | 1   |
| 49      | 408 40 61 |      | Stator 15-10-4a<br>50 Hz 4-poles 660V Y 380V D<br>P2=2,30kW<br>60 Hz 4-poles 440V-460V D<br>P2=2,60kW/3,50hp<br>50 Hz 4-poles 690V Y 400V D<br>P2=2,30kW        | 1           | 1   |
| 49      | 408 40 67 |      | Stator 15-10-4a<br>50 Hz 4-poles 400V-440V Y<br>P2=2,30kW<br>60 Hz 4-poles 480V Y P2=2,60kW/<br>3,50hp  | 1           | 1   |
| 49      | 408 40 63 |      | Stator 15-10-4a<br>50 Hz 4-poles 500V-550V Y<br>P2=2,30kW<br>60 Hz 4-poles 575V-600V Y<br>P2=2,60kW/3,50hp<br>60 Hz 4-poles 380V D P2=2,60kW/<br>3,50hp         | 1           | 1   |
| 49      | 539 95 25 |      | Stator 15-10-6g<br>60 Hz 6-poles 200V-220V Y<br>P2=1,10kW/1,50hp  | 1           | 1   |
| 49      | 539 95 03 |      | Stator 15-10-6g<br>50 Hz 6-poles 380V Y 220V D<br>P2=0,90kW<br>60 Hz 6-poles 440V-460V Y 260V D<br>P2=1,10kW/1,50hp   | 1           | 1   |
| 49      | 539 95 01 |      | Stator 15-10-6g<br>50 Hz 6-poles 660V-690V Y<br>380V-400V D P2=0,90kW<br>60 Hz 6-poles 440V-460V D<br>P2=1,10kW/1,50hp  | 1           | 1   |
| 49      | 539 95 39 |      | Stator 15-10-6g<br>50 Hz 6-poles 400V Y 230V D<br>P2=0,90kW   | 1           | 1   |
| 49      | 539 95 05 |      | Stator 15-10-6g<br>50 Hz 6-poles 415V-440V Y<br>P2=0,90kW<br>60 Hz 6-poles 480V Y P2=1,10kW/<br>1,50hp  | 1           | 1   |
| 49      | 539 95 06 |      | Stator 15-10-6g<br>50 Hz 6-poles 500V-550V Y<br>P2=0,90kW<br>60 Hz 6-poles 575V-600V Y<br>P2=1,10kW/1,50hp  | 1           | 1   |

| Pos. No | Part. No  | Type | Denomination   | Qty/Version  |     |   |
|---------|-----------|------|----------------|--|-----|---|
|         |           |      |                | 011  | 090 |   |
| 50      | 464 62 02 | (Ex) | Shaft unit     | Reduction ratio: 36,39:1 Frequency: 50 Hz Number of Poles: 4 Propeller Speed: 39 rpm Number of Poles: 6 Propeller Speed: 26 rpm<br>Reduction: 36,39:1 Frequency: 60 Hz Number of Poles: 4 Propeller Speed: 47 rpm<br>Reduction ratio: 56,64:1 Frequency: 50 Hz Number of Poles: 4 Propeller Speed: 26 rpm Number of Poles: 6 Propeller Speed: 17 rpm<br>Reduction ratio: 56,64:1 Frequency: 60 Hz Number of Poles: 4 Propeller Speed: 31 rpm Number of Poles: 6 Propeller Speed: 21 rpm<br>Reduction ratio: 40,81:1 Frequency: 50 Hz Number of Poles: 4 Propeller Speed: 35 rpm Number of Poles: 6 Propeller Speed: 24 rpm<br>Reduction ratio: 40,81:1 Frequency: 60 Hz Number of Poles: 4 Propeller Speed: 42 rpm<br>Reduction ratio: 52,71:1 Frequency: 50 Hz Number of Poles: 4 Propeller Speed: 28 rpm Number of Poles: 6 Propeller Speed: 19 rpm<br>Reduction ratio: 52,71:1 Frequency: 60 Hz Number of Poles: 4 Propeller Speed: 33 rpm Number of Poles: 6 Propeller Speed: 22 rpm | 1   | 1 |
| 50      | 464 62 03 | (Ex) | Shaft unit     | Reduction ratio: 44,96:1 Frequency: 50 Hz Number of Poles: 4 Propeller Speed: 32 rpm Number of Poles: 6 Propeller Speed: 22 rpm<br>Reduction ratio: 44,96:1 Frequency: 60 Hz Number of Poles: 4 Propeller Speed: 39 rpm Number of Poles: 6 Propeller Speed: 26 rpm<br>Reduction ratio: 48,30:1 Frequency: 50 Hz Number of Poles: 4 Propeller Speed: 30 rpm Number of Poles: 6 Propeller Speed: 20 rpm<br>Reduction ratio: 48,30:1 Frequency: 60 Hz Number of Poles: 4 Propeller Speed: 36 rpm Number of Poles: 6 Propeller Speed: 24 rpm<br>Reduction ratio: 31,04:1 Frequency: 50 Hz Number of Poles: 4 Propeller Speed: 46 rpm<br>Reduction ratio: 34,80:1 Frequency: 50 Hz Number of Poles: 4 Propeller Speed: 41 rpm   | 1   | 1 |
| 51      | 398 97 06 |      | Sleeve         |  | 1   | 1 |
| 52      | 464 54 02 |      | Bearing holder | Leakage detector in the house :FLS   | 1   |   |

| Pos. No | Part. No  | Type | Denomination   | Qty/Version  |     |   |
|---------|-----------|------|----------------|--|-----|---|
|         |           |      |                | 011  | 090 |   |
| 52      | 464 54 03 |      | Bearing holder | Leakage detector in the house :FLS<br>Water in oil supervision : CLS   | 1   |   |
| 52      | 464 54 06 | (Ex) | Bearing holder | Leakage detector in the house :FLS   |     | 1 |
| 53      | 464 46 00 |      | Gear           | Reduction ratio: 36,39:1 Frequency:<br>50 Hz Number of Poles: 4 Propeller<br>Speed: 39 rpm Number of Poles: 6<br>Propeller Speed: 26 rpm<br>Reduction: 36,39:1 Frequency: 60<br>Hz Number of Poles: 4 Propeller<br>Speed: 47 rpm<br>Reduction ratio: 56,64:1 Frequency:<br>50 Hz Number of Poles: 4 Propeller<br>Speed: 26 rpm Number of Poles: 6<br>Propeller Speed: 17 rpm<br>Reduction ratio: 56,64:1 Frequency:<br>60 Hz Number of Poles: 4 Propeller<br>Speed: 31 rpm Number of Poles: 6<br>Propeller Speed: 21 rpm<br>Reduction ratio: 40,81:1 Frequency:<br>50 Hz Number of Poles: 4 Propeller<br>Speed: 35 rpm Number of Poles: 6<br>Propeller Speed: 24 rpm<br>Reduction ratio: 40,81:1 Frequency:<br>60 Hz Number of Poles: 4 Propeller<br>Speed: 42 rpm<br>Reduction ratio: 52,71:1 Frequency:<br>50 Hz Number of Poles: 4 Propeller<br>Speed: 28 rpm Number of Poles: 6<br>Propeller Speed: 19 rpm<br>Reduction ratio: 52,71:1 Frequency:<br>60 Hz Number of Poles: 4 Propeller<br>Speed: 33 rpm Number of Poles: 6<br>Propeller Speed: 22 rpm | 1   | 1 |
| 53      | 464 46 01 |      | Gear           | Reduction ratio: 44,96:1 Frequency:<br>50 Hz Number of Poles: 4 Propeller<br>Speed: 32 rpm Number of Poles: 6<br>Propeller Speed: 22 rpm<br>Reduction ratio: 44,96:1 Frequency:<br>60 Hz Number of Poles: 4 Propeller<br>Speed: 39 rpm Number of Poles: 6<br>Propeller Speed: 26 rpm<br>Reduction ratio: 48,30:1 Frequency:<br>50 Hz Number of Poles: 4 Propeller<br>Speed: 30 rpm Number of Poles: 6<br>Propeller Speed: 20 rpm<br>Reduction ratio: 48,30:1 Frequency:<br>60 Hz Number of Poles: 4 Propeller<br>Speed: 36 rpm Number of Poles: 6<br>Propeller Speed: 24 rpm<br>Reduction ratio: 31,04:1 Frequency:<br>50 Hz Number of Poles: 4 Propeller<br>Speed: 46 rpm<br>Reduction ratio: 34,80:1 Frequency:<br>50 Hz Number of Poles: 4 Propeller<br>Speed: 41 rpm   | 1   | 1 |

| Pos. No | Part. No  | Type | Denomination  | Qty/Version |     |
|---------|-----------|------|---|-------------|-----|
|         |           |      |   | 011         | 090 |
| 54      | 464 48 00 |      | Shaft<br>Reduction ratio: 44,96:1 Frequency: 50 Hz Number of Poles: 4 Propeller Speed: 32 rpm Number of Poles: 6 Propeller Speed: 22 rpm<br>Reduction ratio: 44,96:1 Frequency: 60 Hz Number of Poles: 4 Propeller Speed: 39 rpm Number of Poles: 6 Propeller Speed: 26 rpm<br>Reduction ratio: 52,71:1 Frequency: 50 Hz Number of Poles: 4 Propeller Speed: 28 rpm Number of Poles: 6 Propeller Speed: 19 rpm<br>Reduction ratio: 52,71:1 Frequency: 60 Hz Number of Poles: 4 Propeller Speed: 33 rpm Number of Poles: 6 Propeller Speed: 22 rpm | 1           | 1   |
| 54      | 464 48 01 |      | Shaft<br>Reduction ratio: 36,39:1 Frequency: 50 Hz Number of Poles: 4 Propeller Speed: 39 rpm Number of Poles: 6 Propeller Speed: 26 rpm<br>Reduction: 36,39:1 Frequency: 60 Hz Number of Poles: 4 Propeller Speed: 47 rpm<br>Reduction ratio: 31,04:1 Frequency: 50 Hz Number of Poles: 4 Propeller Speed: 46 rpm  | 1           | 1   |
| 54      | 464 48 03 |      | Shaft<br>Reduction ratio: 48,30:1 Frequency: 50 Hz Number of Poles: 4 Propeller Speed: 30 rpm Number of Poles: 6 Propeller Speed: 20 rpm<br>Reduction ratio: 48,30:1 Frequency: 60 Hz Number of Poles: 4 Propeller Speed: 36 rpm Number of Poles: 6 Propeller Speed: 24 rpm<br>Reduction ratio: 56,64:1 Frequency: 50 Hz Number of Poles: 4 Propeller Speed: 26 rpm Number of Poles: 6 Propeller Speed: 17 rpm<br>Reduction ratio: 56,64:1 Frequency: 60 Hz Number of Poles: 4 Propeller Speed: 31 rpm Number of Poles: 6 Propeller Speed: 21 rpm | 1           | 1   |
| 54      | 464 48 02 |      | Shaft<br>Reduction ratio: 40,81:1 Frequency: 50 Hz Number of Poles: 4 Propeller Speed: 35 rpm Number of Poles: 6 Propeller Speed: 24 rpm<br>Reduction ratio: 40,81:1 Frequency: 60 Hz Number of Poles: 4 Propeller Speed: 42 rpm<br>Reduction ratio: 34,80:1 Frequency: 50 Hz Number of Poles: 4 Propeller Speed: 41 rpm  | 1           | 1   |



| Pos. No | Part. No  | Type | Denomination   | Qty/Version |     |
|---------|-----------|------|--|-------------|-----|
|         |           |      |  | 011         | 090 |
| 55      | 464 49 00 |      | Gear<br>Reduction ratio: 44,96:1 Frequency: 50 Hz Number of Poles: 4 Propeller Speed: 32 rpm Number of Poles: 6 Propeller Speed: 22 rpm<br>Reduction ratio: 44,96:1 Frequency: 60 Hz Number of Poles: 4 Propeller Speed: 39 rpm Number of Poles: 6 Propeller Speed: 26 rpm<br>Reduction ratio: 52,71:1 Frequency: 50 Hz Number of Poles: 4 Propeller Speed: 28 rpm Number of Poles: 6 Propeller Speed: 19 rpm<br>Reduction ratio: 52,71:1 Frequency: 60 Hz Number of Poles: 4 Propeller Speed: 33 rpm Number of Poles: 6 Propeller Speed: 22 rpm | 1           | 1   |
| 55      | 464 49 01 |      | Gear<br>Reduction ratio: 36,39:1 Frequency: 50 Hz Number of Poles: 4 Propeller Speed: 39 rpm Number of Poles: 6 Propeller Speed: 26 rpm<br>Reduction: 36,39:1 Frequency: 60 Hz Number of Poles: 4 Propeller Speed: 47 rpm<br>Reduction ratio: 31,04:1 Frequency: 50 Hz Number of Poles: 4 Propeller Speed: 46 rpm  | 1           | 1   |
| 55      | 464 49 03 |      | Gear<br>Reduction ratio: 48,30:1 Frequency: 50 Hz Number of Poles: 4 Propeller Speed: 30 rpm Number of Poles: 6 Propeller Speed: 20 rpm<br>Reduction ratio: 48,30:1 Frequency: 60 Hz Number of Poles: 4 Propeller Speed: 36 rpm Number of Poles: 6 Propeller Speed: 24 rpm<br>Reduction ratio: 56,64:1 Frequency: 50 Hz Number of Poles: 4 Propeller Speed: 26 rpm Number of Poles: 6 Propeller Speed: 17 rpm<br>Reduction ratio: 56,64:1 Frequency: 60 Hz Number of Poles: 4 Propeller Speed: 31 rpm Number of Poles: 6 Propeller Speed: 21 rpm | 1           | 1   |
| 55      | 464 49 02 |      | Gear<br>Reduction ratio: 40,81:1 Frequency: 50 Hz Number of Poles: 4 Propeller Speed: 35 rpm Number of Poles: 6 Propeller Speed: 24 rpm<br>Reduction ratio: 40,81:1 Frequency: 60 Hz Number of Poles: 4 Propeller Speed: 42 rpm<br>Reduction ratio: 34,80:1 Frequency: 50 Hz Number of Poles: 4 Propeller Speed: 41 rpm  | 1           | 1   |
| 56      | 464 51 05 |      | Gear housing   | 1           | 1   |
| 57      | 416 94 00 |      | Inspection screw   | 1           | 1   |
| 58      | 428 22 17 |      | Inspection screw BRASS   | 3           | 4   |

| Pos. No | Part. No  | Type | Denomination   | Qty/Version |     |
|---------|-----------|------|--|-------------|-----|
|         |           |      |  | 011         | 090 |
| 58      | 428 22 17 |      | Inspection screw BRASS                                       | 1           |     |
| 60      | 464 61 00 |      | Ring   | 1           | 1   |
| 61      | 775 80 00 |      | Supporting washer  | 1           | 1   |
| 62      | 464 50 00 |      | Shaft  | 1           | 1   |
| 63      | 493 97 00 |      | Ring   | 1           | 1   |
| 64      | 456 71 00 |      | Compression spring   | 12          | 12  |
| 65      | 464 59 00 |      | Washer 63X104X1.5  | 1           | 1   |
| 66      | 496 04 00 |      | Oil housing  | 1           | 1   |
| 67      | 382 83 00 |      | Wear protection NBR-A2                                       | 1           | 1   |
| 68      | 384 03 10 |      | Mechanical seal WCCR/WCCR FPM                                | 1           | 1   |
| 75      | 549 09 00 |      | Propeller blade OD=2500mm                                    | 2           | 2   |
| 75      | 549 09 01 |      | Propeller blade OD=2200mm                                    | 2           | 2   |
| 75      | 549 09 02 |      | Propeller blade OD=2000mm                                    | 2           | 2   |
| 75      | 549 09 03 |      | Propeller blade OD=1800mm                                    | 2           | 2   |
| 75      | 549 09 04 |      | Propeller blade OD=1700mm                                    | 2           | 2   |
| 75      | 549 09 05 |      | Propeller blade OD=1600mm                                    | 2           | 2   |
| 75      | 549 09 06 |      | Propeller blade OD=1500mm                                    | 2           | 2   |
| 75      | 549 09 07 |      | Propeller blade OD=1400mm                                    | 2           | 2   |
| 79      | 777 90 01 |      | Propeller hub Coating: Std Thickness = min 120 micrometer    | 1           | 1   |
| 79      | 777 90 02 |      | Propeller hub Coating: Spec Thickness = 360 - 450 micrometer | 1           | 1   |
| 79      | 777 90 03 |      | Propeller hub Coating: MBBR Thickness = 450 - 550 micrometer | 1           | 1   |
| 79      | 777 90 00 |      | Propeller hub Coating: Primer                                | 1           | 1   |
| 82      | 83 43 58  |      | Cable lug UL/CSA 1.04-2.62 MM2 M6                            | 1           | 1   |
| 83      | 83 44 24  |      | Closed-end splice 3-6 (AWG 12-10)                            | 9           | 9   |
| 83      | 83 44 24  |      | Closed-end splice 3-6 (AWG 12-10)                            | 6           | 6   |
| 83      | 83 44 24  |      | Closed-end splice 3-6 (AWG 12-10)                            | 3           | 3   |
| 95      | 397 81 00 |      | Gland screw Pr 37  | 1           | 1   |
| 96      | 82 42 42  |      | Plain washer 24.5X35X2-A4-70                                 | 1           | 1   |
| 97      | 84 17 93  |      | Seal sleeve (16)-18 MM NBR                                   | 1           | 1   |
| 101     | 678 58 18 |      | Cable clip 16-(18) MM  | 1           | 1   |
| 102     | 94 20 59  |      | Motor cable subcab 4G2.5+2X1.5                               | *           | *   |
| 103     | 83 45 59  |      | Cable tie 200X2.4 PA 6/6 -55+105                             | 5           | 5   |
| 105     | 630 68 00 |      | Data plate USE 6306801 AS SPARE PART                         | 2           | 3   |
| 105     | 775 03 00 |      | Connection plate   | 1           | 1   |
| 105     | 630 69 00 |      | Certificate plate EN   |             | 3   |
| 106     | 83 02 58  |      | Hex.socket hd screw M5X12-A4-70                              |             | 2   |
| 107     | 279 29 00 |      | Earthing plate   |             | 1   |
| 112     | 504 78 06 |      | Cable unit   | 1           |     |
| 113     | 505 12 00 |      | Leakage sensor (CLS30)                                       | 1           |     |
| 114     | 671 31 00 |      | Leakage sensor   | 1           | 1   |

| Pos. No | Part. No  | Type | Denomination                             | Qty/Version  |     |
|---------|-----------|------|--|--|-----|
|         |           |      |  | 011  | 090 |
| 114,1   | 679 03 00 |      | Holder                                   | 1  | 1   |
| 114,2   | 518 89 02 |      | Leakage sensor (FLS)                     | 1  | 1   |
| 115     | 504 78 07 |      | Cable unit                               | 1  | 1   |
| 116     | 81 41 52  |      | Hexagon head screw M12X20-A2-70          | 1  | 1   |
| 116     | 81 41 52  |      | Hexagon head screw M12X20-A2-70          | 2  |     |
| 117     | 83 97 48  |      | Leakage sensor                           | 1  |     |
| 120     | 84 66 55  |      | Cable clamp RUBBER SEALING STRIP<br>15MM | 1  | 1   |
| 120     | 84 60 64  |      | Cable clamp RUBBER SEALING STRIP<br>17MM | 1  | 1   |
| 120     | 84 60 65  |      | Cable clamp RUBBER SEALING STRIP<br>19MM | 1  |     |
| 120     | 84 64 36  |      | Cable clamp RUBBER SEALING STRIP<br>21MM |  | 1   |
| 122     | 82 27 27  |      | Lock nut M8-A4-70                        | 1  | 1   |
| 123     | 83 04 45  |      | Hex.socket hd screw M8X35-A4-80          | 1  | 1   |
| 136     | 482 01 01 |      | Cable supp.grip unit                     | 1  | 1   |
| 138     | 83 03 76  |      | Hex.socket hd screw M16X70-A4-70         | 8  | 8   |
| 139     | 82 50 19  |      | Lock washer M16                          | 8  | 8   |
| 141     | 481 95 09 |      | Stand unit                               | 1  | 1   |
| 141,1   | 481 92 06 |      | Stand                                    | 1  | 1   |
| 141,2   | 481 96 01 |      | Claw                                     | 1  | 1   |
| 141,5   | 82 27 29  |      | Lock nut M12-A4-70                       | 4  | 4   |
| 141,6   | 82 42 36  |      | Plain washer 12.5X35X2-A4-70             | 4  | 4   |
| 141,7   | 83 03 48  |      | Hex.socket hd screw M12X40-A4-70         | 4  | 4   |
| 141,8   | 481 93 00 |      | Sleeve                                   | 4  | 4   |
| 141,9   | 481 94 00 |      | Sleeve                                   | 4  | 4   |
| 166     | 482 04 02 |      | Support                                  | 1  | 1   |
| 166     | 482 04 02 |      | Support                                  | 2  | 2   |
| 166     | 482 04 01 |      | Support                                  | 1  | 1   |
| 172     | 82 26 49  |      | Shackle                                  | 1  | 1   |
| 174     | 82 27 30  |      | Lock nut M16-A4-70                       | 8  | 8   |
| 175     | 509 53 05 |      | Stand unit                               | 1  | 1   |
|         |           |      |  | Double guide bars Guide bar<br>dimension: OD 114,3mm Material:<br>Stainless steel (ASTM 304) |     |
| 175,1   | 82 23 31  |      | Hexagon nut M6-A4-70                     | 2  | 2   |
| 175,2   | 82 23 35  |      | Hexagon nut M12-A4-70                    | 4  | 4   |
| 175,3   | 82 35 71  |      | Plain washer 4.3X9X0.8-A4-170HV          | 12   | 12  |
| 175,4   | 82 50 17  |      | Lock washer M12                          | 8  | 8   |
| 175,5   | 83 02 79  |      | Hex.socket hd screw M6X25-A4-70          | 2  | 2   |
| 175,6   | 83 03 47  |      | Hex.socket hd screw M12X35-A4-70         | 4  | 4   |
| 175,7   | 84 24 58  |      | Blind rivet                              | 12   | 12  |
| 175,8   | 465 42 00 |      | Cable clamp                              | 1  | 1   |
| 175,9   | 509 45 00 |      | Claw                                     | 2  | 2   |
| 175,10  | 547 84 01 |      | Lifting handle                           | 1  | 1   |
| 175,11  | 504 56 03 |      | Stand                                    | 1  | 1   |

| Pos. No | Part. No  | Type | Denomination                     | Qty/Version   |     |    |
|---------|-----------|------|----------------------------------|---|-----|----|
|         |           |      |                                  | 011   | 090 |    |
| 175     | 509 53 06 |      | Stand unit                       | Double guide bars Guide bar dimension: OD 114,3mm Material: stainless steel (ASTM 316L) | 1   | 1  |
| 175,1   | 82 23 31  |      | Hexagon nut M6-A4-70             |   | 2   | 2  |
| 175,2   | 82 23 35  |      | Hexagon nut M12-A4-70            |   | 4   | 4  |
| 175,3   | 82 35 71  |      | Plain washer 4.3X9X0.8-A4-170HV  |   | 12  | 12 |
| 175,4   | 82 50 17  |      | Lock washer M12                  |   | 8   | 8  |
| 175,5   | 83 02 79  |      | Hex.socket hd screw M6X25-A4-70  |   | 2   | 2  |
| 175,6   | 83 03 47  |      | Hex.socket hd screw M12X35-A4-70 |   | 4   | 4  |
| 175,7   | 84 24 58  |      | Blind rivet                      |   | 12  | 12 |
| 175,8   | 465 42 00 |      | Cable clamp                      |   | 1   | 1  |
| 175,9   | 509 45 00 |      | Claw                             |   | 2   | 2  |
| 175,10  | 547 84 02 |      | Lifting handle                   |   | 1   | 1  |
| 176     | 753 29 00 |      | Mounting kit PROPELLER           |   | 1   | 1  |
| 176,1   | 80 46 27  |      | Parallel key 14H9X9H11X70        |   | 2   | 2  |
| 176,2   | 791 13 00 |      | Damper                           |   | 2   | 2  |
| 176,3   | 83 03 76  |      | Hex.socket hd screw M16X70-A4-70 |   | 1   | 1  |
| 176,4   | 384 61 00 |      | Supporting washer                |   | 1   | 1  |
| 176,5   | 82 77 96  |      | O-ring 57.5X3 NBR                |   | 1   | 1  |
| 176,6   | 84 35 33  |      | Seal sleeve (16)-18 MM CR        |   | 1   | 1  |
| 176,7   | 81 49 32  |      | Hexagon head screw M16X45-A4-70  |   | 2   | 2  |
| 176,8   | 82 50 19  |      | Lock washer M16                  |   | 2   | 2  |
| 176,9   | 494 78 01 |      | Supporting washer                |   | 2   | 2  |
| 176,10  | 82 74 66  |      | O-ring 64.5X3 NBR                |   | 2   | 2  |
| 177     | 800 65 00 |      | Distance block                   |   | 2   | 2  |
| 177     | 800 65 00 |      | Distance block                   |   | 4   | 4  |
| 179     | 83 03 76  |      | Hex.socket hd screw M16X70-A4-70 |   | 8   | 8  |
| 181     | 82 50 17  |      | Lock washer M12                  |   | 1   | 2  |
| 181     | 82 50 17  |      | Lock washer M12                  |   | 2   |    |
| 222     | 679 03 00 |      | Holder                           |   | 2   |    |
| 250     | 726 11 00 |      | Fastening kit                    |   | 1   | 1  |
| 400     | 667 40 00 |      | Sticker                          |   | 2   | 2  |
| 800     | 82 97 16  |      | O-ring kits                      |   | 1   | 1  |
| 801     | 466 26 14 |      | Zinc anode kit                   | 1-bar guide system  | 1   | 1  |
| 801     | 466 26 15 |      | Zinc anode kit                   | 2-bar guide system  | 1   | 1  |
| 810     | 584 92 00 |      | Rebuilding kit DIAM.2.5          |   | 1   | 1  |
| 810     | 584 92 01 |      | Rebuilding kit DIAM.2.2          |   | 1   | 1  |
| 810     | 584 92 02 |      | Rebuilding kit DIAM.2            |   | 1   | 1  |
| 810     | 584 92 03 |      | Rebuilding kit DIAM.1.8          |   | 1   | 1  |
| 810     | 584 92 04 |      | Rebuilding kit DIAM.1.7          |   | 1   | 1  |
| 810     | 584 92 05 |      | Rebuilding kit DIAM.1.6          |   | 1   | 1  |
| 810     | 584 92 06 |      | Rebuilding kit DIAM.1.5          |   | 1   | 1  |
| 810     | 584 92 07 |      | Rebuilding kit DIAM.1.4          |   | 1   | 1  |
| 810     | 584 92 10 |      | Rebuilding kit DIAM.2.5          |   | 1   | 1  |
| 810     | 584 92 11 |      | Rebuilding kit DIAM.2.2          |   | 1   | 1  |

| Pos. No | Part. No  | Type | Denomination            | Qty/Version |     |
|---------|-----------|------|-------------------------|-------------|-----|
|         |           |      |                         | 011         | 090 |
| 810     | 584 92 12 |      | Rebuilding kit DIAM.2   | 1           | 1   |
| 810     | 584 92 13 |      | Rebuilding kit DIAM.1.8 | 1           | 1   |
| 810     | 584 92 14 |      | Rebuilding kit DIAM.1.7 | 1           | 1   |
| 810     | 584 92 15 |      | Rebuilding kit DIAM.1.6 | 1           | 1   |
| 810     | 584 92 16 |      | Rebuilding kit DIAM.1.5 | 1           | 1   |
| 810     | 584 92 17 |      | Rebuilding kit DIAM.1.4 | 1           | 1   |
| 810     | 584 92 20 |      | Rebuilding kit DIAM.2.5 | 1           | 1   |
| 810     | 584 92 21 |      | Rebuilding kit DIAM.2.2 | 1           | 1   |
| 810     | 584 92 22 |      | Rebuilding kit DIAM.2   | 1           | 1   |
| 810     | 584 92 23 |      | Rebuilding kit DIAM.1.8 | 1           | 1   |
| 810     | 584 92 24 |      | Rebuilding kit DIAM.1.7 | 1           | 1   |
| 810     | 584 92 25 |      | Rebuilding kit DIAM.1.6 | 1           | 1   |
| 810     | 584 92 26 |      | Rebuilding kit DIAM.1.5 | 1           | 1   |
| 810     | 584 92 27 |      | Rebuilding kit DIAM.1.4 | 1           | 1   |
| 900     | 726 38 00 |      | Basic repair kit        | 1           | 1   |
| 900     | 814 46 00 |      | Mounting kit            | 1           | 1   |
| 901     | 90 17 52  |      | Oil ISO VG 32           | *           | *   |
| 901     | 90 17 58  |      | Oil GEAR UNITS          | 5           | 5   |
| 912     | 82 73 90  |      | O-ring 19.2X3 NBR       | 5           | 5   |
| 915     | 659 35 00 |      | Mounting kit MBBR       | 1           | 1   |