

Flygt SR 4680.310/.390



Table of Contents

1 Introduction.....	2
1.1 Specially approved products.....	2
2 Product Description.....	3
2.1 The data plate.....	3
2.2 Product denomination.....	3
3 Exploded View.....	5
3.1 Exploded view.....	5
3.2 Exploded view.....	7
4 List of Parts.....	11
4.1 4680.310/.390.....	11

1 Introduction

Purpose of this manual

The purpose of this manual is to provide necessary information on spare parts and accessories order.

Disclaimer

Always use genuine Flygt parts. The use of other spare parts or accessories can invalidate any claims for warranty or compensation. Xylem does not take any responsibility for damages that are caused by the use of non-original parts. For more information, contact your local sales and service representative.

Data for ordering spare parts

The following information is needed for spare part orders:

- Serial number of the product
- Part number
- Quantity of bulk material, see * in tables

1.1 Specially approved products

Qualification of personnel

Only Xylem or Xylem-authorized service personnel may undertake repair work on specially approved products.

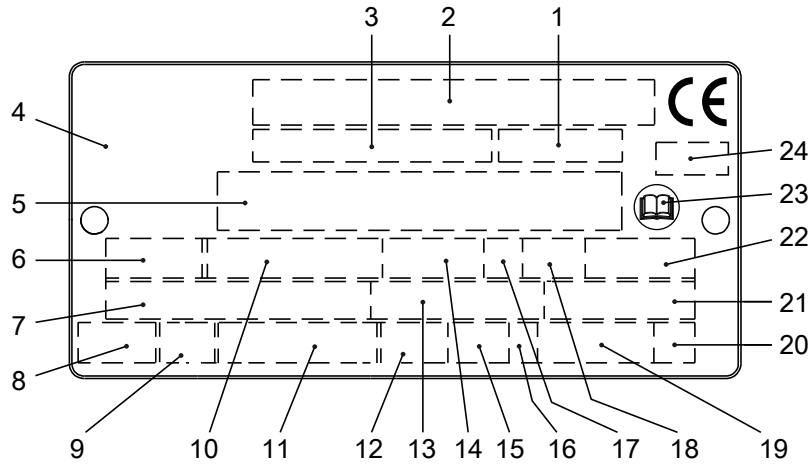
Dimensional accuracy inspection

Spare parts marked with (Ex) after the part number are subject to dimensional accuracy inspection when used in specially approved products.

2 Product Description

2.1 The data plate

The data plate is a metal label that is located on the main body of the products. The data plate lists key product specifications. Specially approved products also have an approval plate.



WIS006257A

1. Curve code or Propeller code
2. Serial number
3. Product number
4. Country of origin
5. Additional information
6. Phase; type of current; frequency
7. Rated voltage
8. Thermal protection
9. Thermal class
10. Rated shaft power
11. International standard
12. Degree of protection
13. Rated current
14. Rated speed
15. Maximum submergence
16. Direction of rotation: L=left, R=right
17. Duty class
18. Duty factor
19. Product weight
20. Locked rotor code letter
21. Power factor
22. Maximum ambient temperature
23. Read installation manual
24. Notified body, only for EN-approved Ex products

Figure 1: The data plate

2.2 Product denomination

Reading instruction

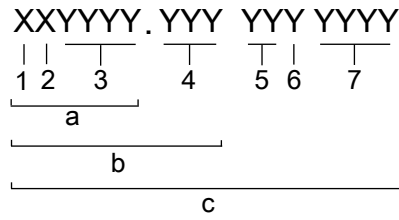
In this section, code characters are illustrated accordingly:

X = letter

Y = digit

The different types of codes are marked up with a, b and c. Code parameters are marked up with numbers.

Codes and parameters

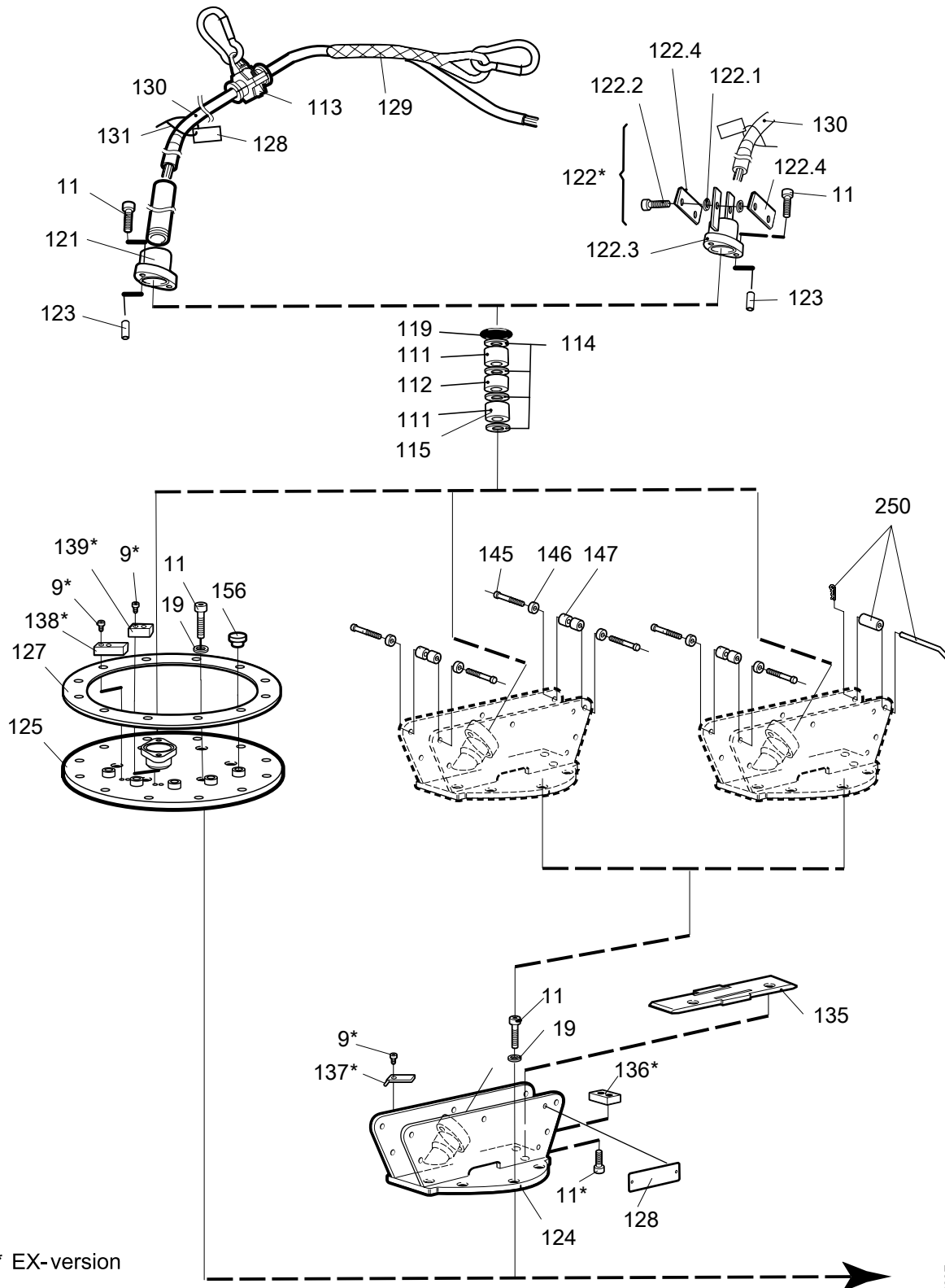


WS006265B

Type of Callout	Number	Indication
Type of code	a	Sales denomination
	b	Product code
	c	Serial number
Parameter	1	Hydraulic end
	2	Type of installation
	3	Sales code
	4	Version
	5	Production year
	6	Production cycle
	7	Running number

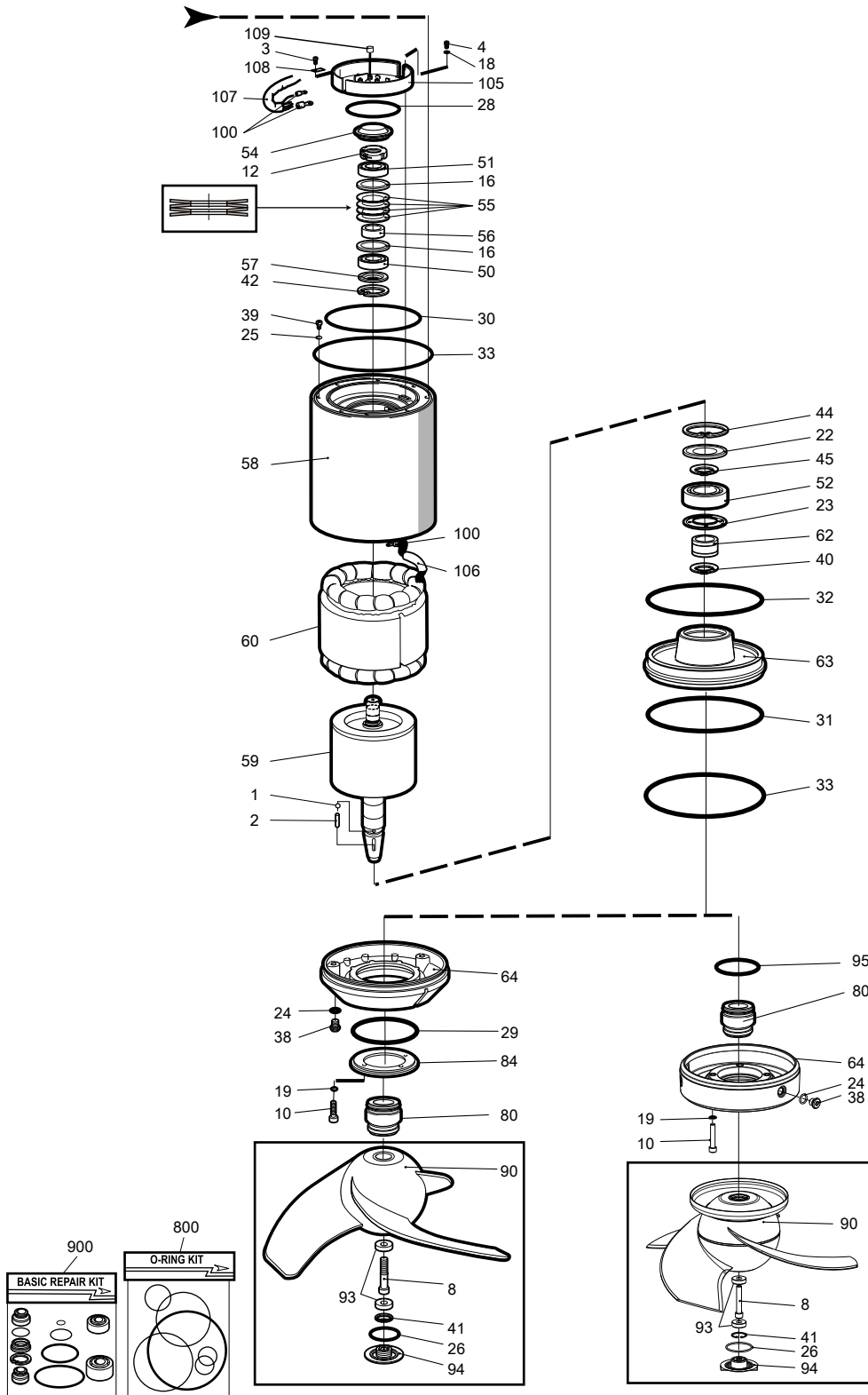
3 Exploded View

3.1 Exploded view



* EX-version

40798F



40801C

3.2 Exploded view

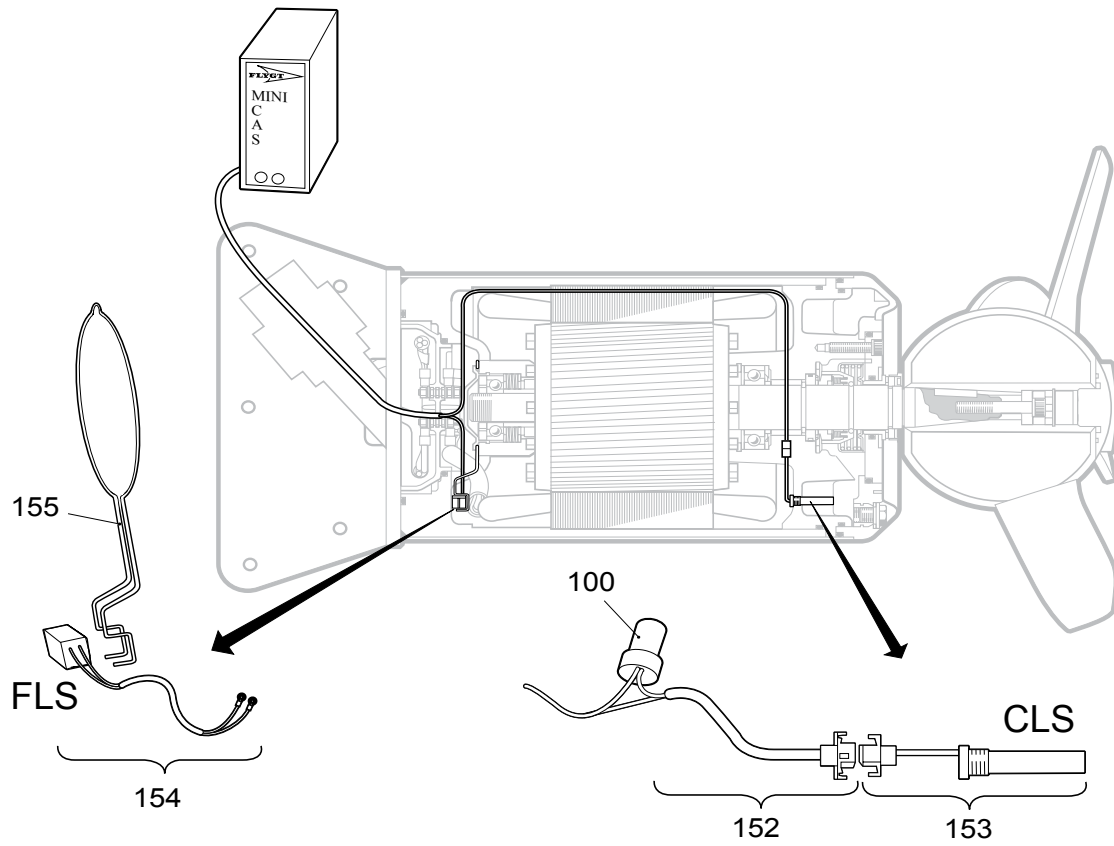
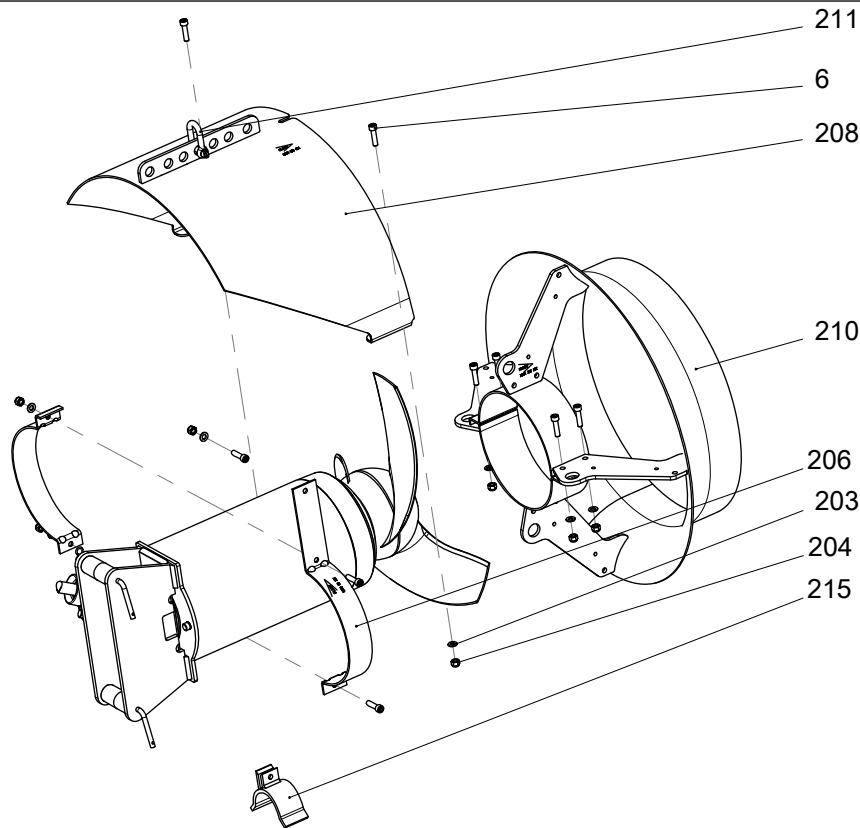
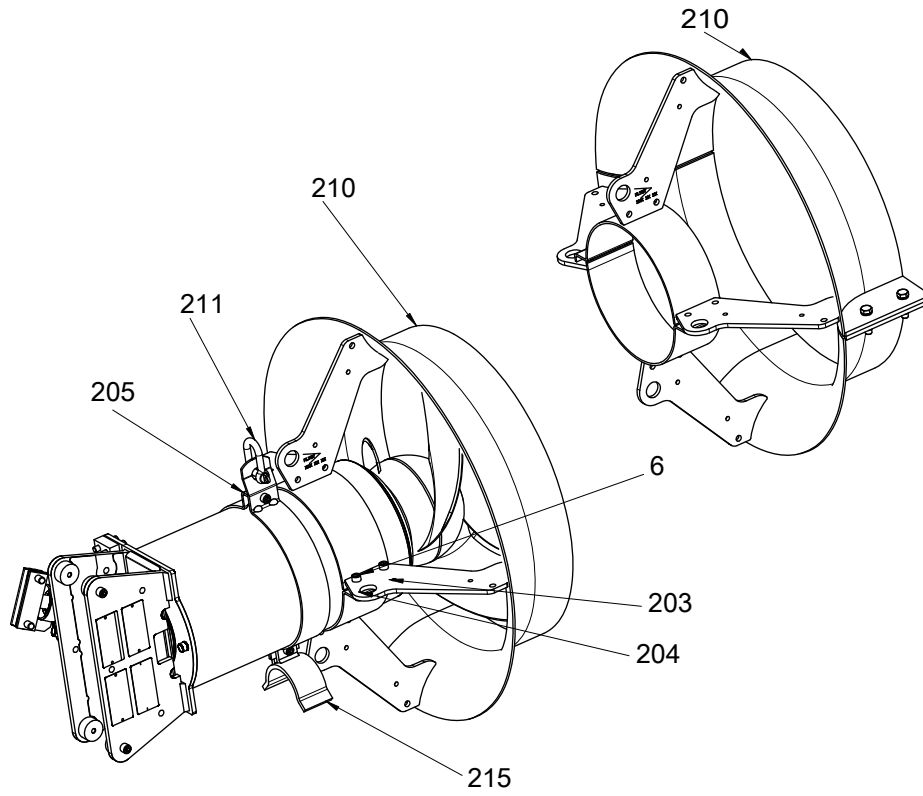


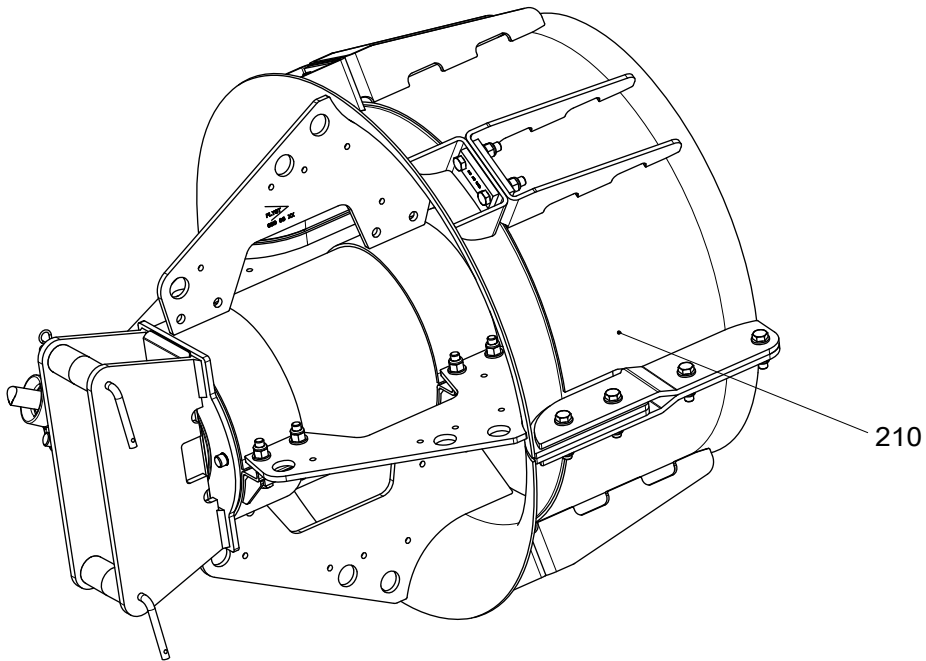
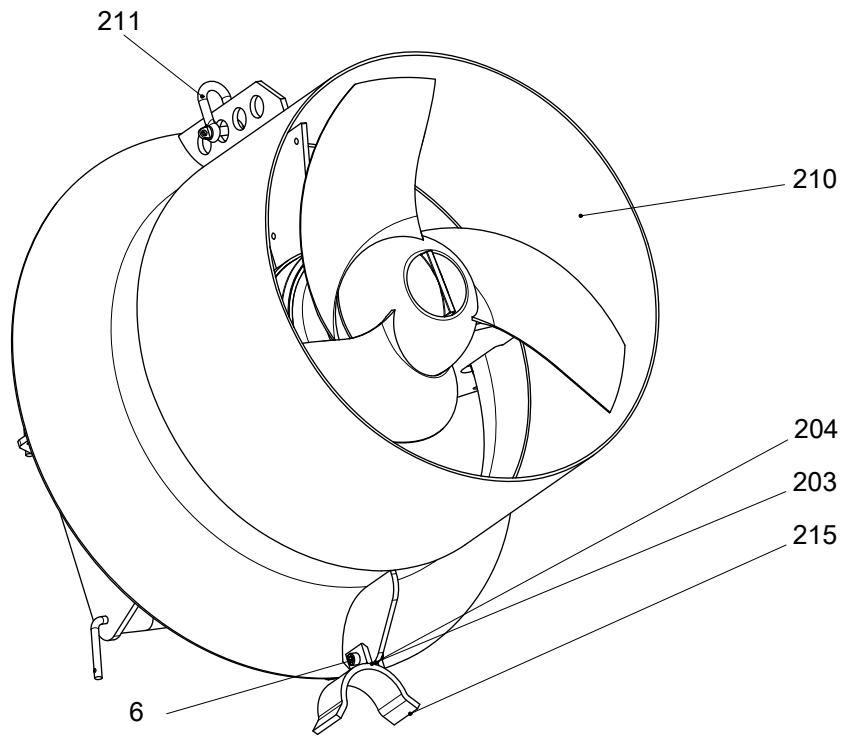
Figure 2: Sensors

40930A



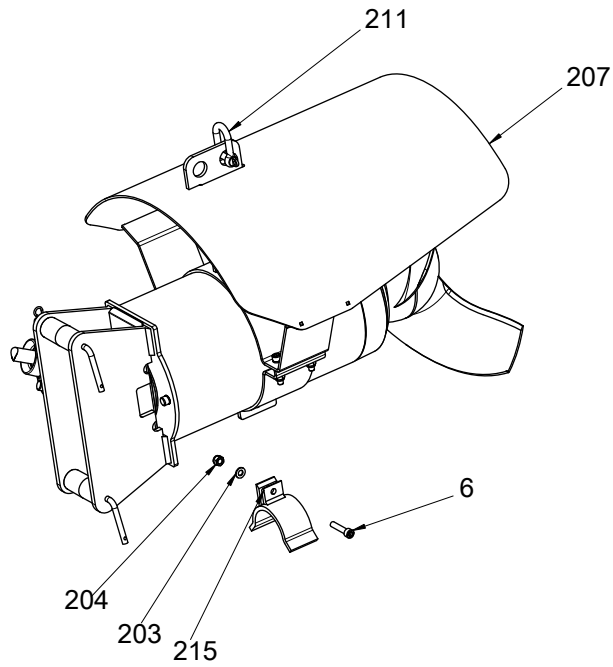
40931A

Figure 3: Jetring and vortex protection shield



40932A

Figure 4: Jetring, extended and extended divided



40933A

Figure 5: Vortex protection shield

4 List of Parts

4.1 4680.310/.390

Pos. No	Part. No	Type	Denomination	Qty/Version	
				310	390
1	80 30 05		Parallel pin CP-H8-4X10-2346	1	1
3	83 02 73		Hex.socket hd screw M6X12-A4-70	1	1
4	83 02 73		Hex.socket hd screw M6X12-A4-70	3	3
5	83 02 00		Hex.socket hd screw M10X50-A4-80	5	5
5	83 02 00		Hex.socket hd screw M10X50-A4-80	4	4
6	83 04 46		Hex.socket hd screw M10X40-A4-80	8	10
6	83 04 46		Hex.socket hd screw M10X40-A4-80	3	3
6	83 04 46		Hex.socket hd screw M10X40-A4-80		12
9	83 04 48		Hex.socket hd screw M8X20-A4-80		1
10	83 04 46		Hex.socket hd screw M10X40-A4-80	4	4
11	83 04 49		Hex.socket hd screw M12X30-A4-80	2	2
12	589 46 00		Nut unit	1	1
16	82 44 39		Supporting washer S 75X95X3.5	2	2
18	787 20 00		Disc spring	1	1
19	583 32 03		Seal ring HNBR	12	12
19	583 32 02		Seal ring FPM	12	12
22	596 37 05		Washer 70X129.8X4	1	1
23	627 28 00		Special washer PBT 10% GLASS-FIBRE	1	1
24	82 76 85		O-ring 17X3 NBR	2	2
24	82 79 15		O-ring 17X3 FPM	2	2
25	82 74 40		O-ring 4.1X1.6 NBR	1	1
26	82 74 69		O-ring 79.5X3 NBR	1	1
26	82 81 76		O-ring 79.5X3 FPM	1	1
28	82 74 85		O-ring 159.3X5.7 NBR	1	1
29	82 74 89		O-ring 179.3X5.7 NBR	1	1
29	82 81 71		O-ring 179.3X5.7 FPM	1	1
30	82 75 01		O-ring 279.3X5.7 NBR	1	1
30	82 75 22		O-ring 279.3X5.7 FPM	1	1
32	82 78 69		O-ring 330X5.7 NBR	2	2
32	82 71 39		O-ring 330X5.7 FPM	2	2
33	82 75 06		O-ring 359.3X5.7 NBR	2	2
33	82 81 53		O-ring 359.3X5.7 FPM	2	2
38	642 13 01		Plug	2	2
39	583 89 00	(Ex)	Inspection screw SS	1	1
40	82 60 66		Retaining ring 471-60X3	1	1
42	82 62 20		Retaining ring SGH 80	1	1
44	82 62 37		Retaining ring SGH 130	1	1
45	82 64 01		Retaining ring 60-SPRING STEEL	1	1

Pos. No	Part. No	Type	Denomination	Qty/Version	
				310	390
50	83 57 07		Roller bearing NU 1010 J/M C3 50X80X16	1	1
51	85 03 53		Ball bearing 7210 50X90X20	1	1
52	85 03 54		Ball bearing 7212 60X130X31	1	1
54	570 38 00		Cover	1	1
55	582 95 02		Disc spring	4	4
56	584 86 02		Sleeve	1	1
57	585 16 00		Supporting washer	1	1
58	582 99 04		Stator housing unit	1	
58	582 99 14	(Ex)	Stator housing unit		1
59	570 15 03	(Ex)	Shaft unit	1	1
60	673 95 39		Stator 35-32-16a	1	1
			50 Hz 16-poles 400V D		
			60 Hz 16-poles 460V-480V D		
60	673 95 38	(Ex)	Stator 35-32-16a	1	1
			50 Hz 16-poles 380V D 660V Y		
			60 Hz 16-poles 440V-460V D		
60	673 95 30	(Ex)	Stator 35-32-16a	1	1
			60 Hz 16-poles 380V D 660V Y		
60	673 95 53	(Ex)	Stator 35-32-16a	1	1
			50 Hz 16-poles 690V D		
62	570 59 00		Sleeve	1	
62	585 24 00	(Ex)	Sleeve		1
63	570 58 02		Bearing housing	1	
63	570 58 03		Bearing housing	1	
63	570 58 11	(Ex)	Bearing housing		1
64	570 34 00		Oil housing	1	1
80	631 37 30		Mechanical seal WCCR/WCCR, WCCR/WCCR FPM	1	1
80	631 37 31		Mechanical seal WCCR/WCCR, RSIC/ RSIC FPM	1	1
81	649 91 01	(Ex)	Seal holder	1	1
84	649 91 01	(Ex)	Seal holder	1	1
90	591 01 23		Propeller compl. stainless steel (ASTM 316L) Angle 3	1	1
90	591 01 25		Propeller compl. stainless steel (ASTM 316L) Angle 5	1	1
90	591 01 31		Propeller compl. stainless steel (ASTM 316L) Angle 11	1	1
90	591 01 33		Propeller compl. stainless steel (ASTM 316L) Angle 13	1	1
90	591 01 37		Propeller compl. stainless steel (ASTM 316L) Angle 17	1	1
90	700 57 07		Propeller compl. Stainless steel (Duplex ASTM UNS S31803) Angle 7	1	1
90	700 57 09		Propeller compl. Stainless steel (Duplex ASTM UNS S31803) Angle 9	1	1
90	700 57 17		Propeller compl. Stainless steel (Duplex ASTM UNS S31803) Angle 17	1	1
90	582 29 09		Propeller compl. Hard-Iron TM Angle 9	1	1
90	582 29 15		Propeller compl. Hard-Iron TM Angle 15	1	1
100	83 42 83		Cable lug 0.5-1.5 MM2 M5	2	2
100	83 42 84		Cable lug 2.5-6MM2 M8	6	6
100	83 42 99		Cable lug 10.1-16 MM2 M8	6	6
100	83 44 24		Closed-end splice 3-6 (AWG 12-10)	1	1

Pos. No	Part. No	Type	Denomination	Qty/Version	
				310	390
100	83 42 83		Cable lug 0.5-1.5 MM2 M5	1	
100	83 42 97		Cable lug 10.1-16MM2 M6	1	1
100	83 42 99		Cable lug 10.1-16 MM2 M8	3	3
100	83 43 62		Cable lug UL/CSA 0.50-1.65 MM2 M6	1	1
100	427 13 00		Marking tape	1	1
100	83 42 77		Cable lug 16.1-25MM2 M8	3	3
100	83 42 82		Cable lug 16.1-25MM2 M6	1	1
100	83 43 04		Cable lug 1-2.5 MM2 M5	2	2
105	570 37 00		Con.term.board unit	1	1
106	94 05 88		Insulating hose D=16 MM	*	*
106	94 03 33		Shrink hose ID=3.2 MM	*	*
107	94 13 64		Insulating hose DIAM.25; CLASS H180/4KV	*	*
108	580 28 00		Plate spring	2	2
109	83 93 95		Protective cap 12X10.5 MM PE	2	2
109	83 93 96		Protective cap 13X12 MM PE	6	6
111	84 18 03		Seal sleeve (23)-26 MM NBR	2	2
111	84 18 04		Seal sleeve (26)-29 MM NBR	2	2
111	84 18 06		Seal sleeve (32)-35 MM NBR	2	2
111	84 19 42		Seal sleeve (20)-23 MM FPM	2	2
111	84 19 43		Seal sleeve (23)-26 MM FPM	2	2
112	597 98 02		Sleeve	1	1
114	82 42 72		Plain washer 34.5X52X2-A4-70	4	4
114	82 42 73		Plain washer 35.5X52X2-A4-70	4	4
119	82 74 65		O-ring 59.5X3 NBR	1	1
119	82 80 90		O-ring 59.5X3 FPM	1	1
121	642 17 03	(Ex)	Entrance flange	1	1
121	597 87 08	(Ex)	Entrance flange 2-11.5 NPT, (17)-23 MM	1	1
121	597 87 01	(Ex)	Entrance flange ISO G1 1/4, (17)-23 MM	1	1
122	618 81 03		Entrance flange		1
122,1	82 35 77		Plain washer 13X24X2.5-A4-170HV		10
122,2	83 03 50		Hex.socket hd screw M12X50-A4-70		2
122,3	618 80 03		Entrance flange (14)-35 MM		1
122,4	728 40 01		Plate		1
123	82 97 74		Cap 24X45 MM PVC	1	1
123	82 97 76		Cap 26X45 MM PVC	1	1
123	82 97 81		Cap 32X45 MM PVC	1	1
123	82 97 69		Cap 19X36 MM	1	1
123	82 97 73		Cap 23X45 MM PVC	1	1
124	638 46 01		Fixing plate compl. 100 x 100 mm Mtrl:stainless steel (ASTM 316L)	1	
124	639 03 01		Fixing plate compl. 100 x 150 mm Mtrl:stainless steel (ASTM 316L)	1	

Pos. No	Part. No	Type	Denomination	Qty/Version	
				310	390
124	638 46 03		Fixing plate compl. 100 x 100 mm Mtrl:stainless steel (ASTM 304)	1	
124	639 03 03		Fixing plate compl. 100 x 150 mm Mtrl:stainless steel (ASTM 304)	1	
124	638 46 11	(Ex)	Fixing plate compl. 100 x 100 mm Mtrl:stainless steel (ASTM 316L)		1
124	639 03 11	(Ex)	Fixing plate compl. 100 x 150 mm Mtrl:stainless steel (ASTM 316L)		1
124	638 46 13	(Ex)	Fixing plate compl. 100 x 100 mm Mtrl:stainless steel (ASTM 304)		1
124	639 03 13	(Ex)	Fixing plate compl. 100 x 150 mm Mtrl:stainless steel (ASTM 304)		1
128	630 68 00		Data plate USE 6306801 AS SPARE PART	2	2
128	775 04 00		Connection plate	1	1
128	630 76 00		Plate HOT WATER PRODUCT	1	1
128	630 69 00		Certificate plate EN		2
128	630 70 00		Certificate plate FM		2
128	801 03 04		Name plate CSAEx		1
128	801 04 00		Caution plate CSAEx		1
129	482 01 03		Cable supp.grip unit	1	1
129	83 57 25		Cable support grip 25-36MM	1	1
129	482 01 01		Cable supp.grip unit	1	1
129	83 57 26		Cable support grip 37-49MM	1	1
130	94 19 81		Motor cable subcab 4G10+S(2X0.5)	*	*
130	94 19 82		Motor cable subcab 4G16+S(2X0.5)	*	*
130	94 19 83		Motor cable subcab 4G25+S(2X0.5)	*	*
130	94 20 96		Motor cable hcr 4G16+2X1,5 S07E5E5-F4G16+2x1,5	*	*
130	94 20 97		Motor cable hcr 4G25+2X1,5 S07E5E5-F4G25+2x1,5	*	*
131	83 45 59		Cable tie 200X2.4 PA 6/6 -55+105	1	1
135	631 63 00		Plate PE-HD	1	
135	631 63 01		Plate PVDF		1
136	582 32 01		Square nut SS		1
145	83 04 62		Hex.socket hd screw M10X30-A4-80	4	4
146	82 50 16		Lock washer	4	4
147	630 83 00		Sleeve SS	4	4
152	603 60 00		Cable unit	1	
153	505 12 00		Leakage sensor (CLS30)	1	
154	518 89 02		Leakage sensor (FLS)	1	1
155	624 11 00		Bracket WIRE,DIAM.2	1	1
156	94 05 88		Insulating hose D=16 MM	*	
190	611 45 00		Instruction label	1	1
203	82 35 76		Plain washer 10.5X20X2-A4-170HV	7	7
203	82 35 76		Plain washer 10.5X20X2-A4-170HV	4	4
203	82 35 76		Plain washer 10.5X20X2-A4-170HV	9	9
204	82 27 28		Lock nut M10-A4-70	7	7

Pos. No	Part. No	Type	Denomination	Qty/Version	
				310	390
204	82 27 28		Lock nut M10-A4-70	4	4
204	82 27 28		Lock nut M10-A4-70	9	9
205	597 70 01		Lifting handle unit	1	1
205	83 02 00		Hex.socket hd screw M10X50-A4-80	1	1
205	83 02 00		Hex.socket hd screw M10X50-A4-80	9	9
206	695 17 01		Handle unit	1	1
208	694 33 01		Protect.disc compl.	1	1
210	645 17 01		Jet ring compl. Material: stainless steel (ASTM 316L) Divided Jet ring	1	1
210	730 27 03		Jet ring compl. Material: stainless steel (ASTM 304) Extended jetring Support	1	1
211	82 26 50		Shackle	1	1
215	788 79 00		Support	1	1
250	726 11 00		Fastening kit	1	1
400	667 40 01		Sticker	2	2
800	80 32 94		O-ring kits NBR	1	1
800	80 32 95		O-ring kits FPM	1	1
801	466 26 37		Zinc anode kit	1	1
801	466 26 40		Zinc anode kit	1	1
900	816 26 00		Basic repair kit	1	1
900	816 27 00		Basic repair kit	1	1
900	816 28 00		Basic repair kit	1	1
900	816 29 00		Basic repair kit	1	1
900	816 30 00		Basic repair kit	1	1
900	816 31 00		Basic repair kit	1	1
901	90 17 52		Oil ISO VG 32	*	*
902	90 20 58		Grease PAIL 16KG	*	*
912	82 76 85		O-ring 17X3 NBR	2	2
912	82 79 15		O-ring 17X3 FPM	2	2