



C 3057

Product

Submersible pump for pumping waste water and sludge. It can also be used for pumping ground water and other liquids containing solids.

Denomination

Product code 3057.181
 Installation F, H, P, S
 Impeller characteristic HT

Process data

Liquid temperature max +40 °C
 Depth of immersion max 20 m
 The pH of the pumped liquid pH 5,5-14
 Liquid density max. 1100 kg/m³

Motor data

Frequency 50 Hz
 Insulation class F (+155 °C)
 Voltage variation
 - continuously running max ± 5%
 - intermittent running max ± 10%
 Voltage imbalance between phases max 2%
 No. of starts/hour max 15

Cable

Direct-on-line start
 SUBCAB®

4G1,5 mm²
 4G2,5+2x1,5 mm²

Y/D start

SUBCAB® 7G2,5 mm²

Monitoring equipment

Thermal switches in stator windings. 125 °C
 Leakage sensor in stator housing FLS

Material

Impeller Polyamide
 Pump housing Cast iron
 Stator housing Cast iron
 Shaft Stainless steel
 O-rings Nitrile rubber

Mechanical face seals

Alternative	Inner seal	Outer seal
1	Aluminium oxide/ Corrosion resistant cemented carbide	Aluminium oxide/ Aluminium oxide
2	Aluminium oxide/ Aluminium oxide	Aluminium oxide/ Aluminium oxide
3	Aluminium oxide/ Aluminium oxide	Corrosion resistant cemented carbide/ Corrosion resistant cemented carbide
4	Corrosion resistant cemented carbide/ Corrosion resistant cemented carbide	Corrosion resistant cemented carbide/ Corrosion resistant cemented carbide
5	Corrosion resistant cemented carbide/ Corrosion resistant cemented carbide	Aluminium oxide/ Aluminium oxide
6	Carbon/Aluminium oxide	Aluminium oxide/ Aluminium oxide
7	Carbon/Aluminium oxide	Corrosion resistant cemented carbide/ Corrosion resistant cemented carbide

Surface Treatment

All cast parts are coated with a primer. The finish coat is a synthetic varnish.

Weight

See dimensional drawing.

Option

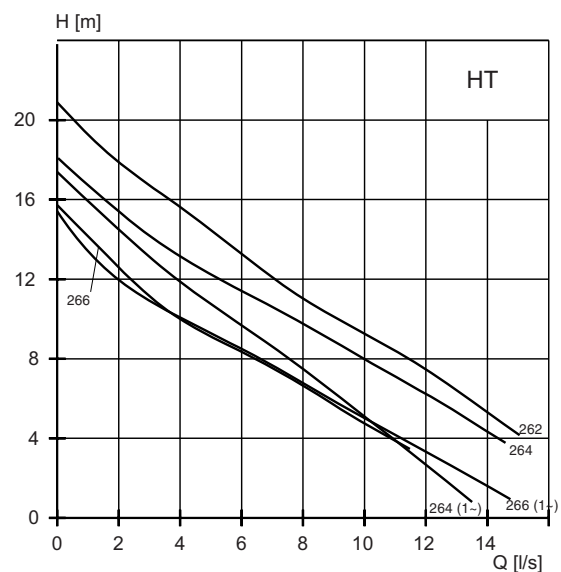
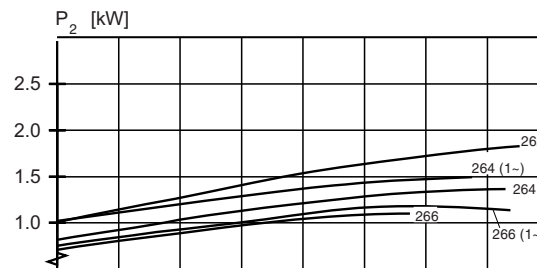
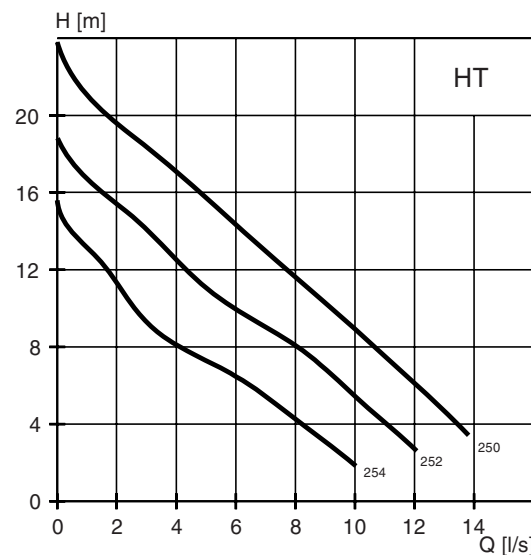
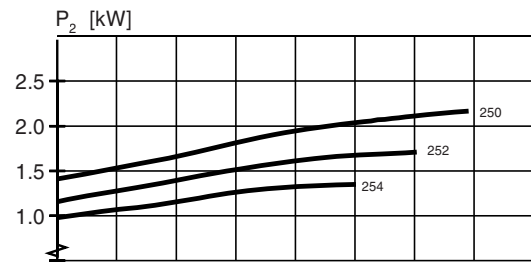
3057.091 Ex. proof design
 Warm liquid version on request
 Other cables
 Zinc anodes

Accessories

Discharge connections, adapters, hose connections and other mechanical accessories.
 Electrical accessories such as pump controller, control panels, starters, monitoring relays, cables.
 See separate booklet or www.flygt.com, for further information

HT-Motor rating and performance curve

Curve/Impeller No	Rated power, kW	Rated current, A	Starting current, A	Power factor cos φ	Impeller throatlet, mm	Ex proof version available	Installation			
							F	H	P	S
400 V, 50 Hz, 3 ~, 2695 r/min										
250	1,7	3,8	17,0	0,87	48	•	•	•	•	•
250	1,7	3,8	17,0	0,87	48		•			
252	1,7	3,8	17,0	0,87	48	•	•	•	•	
252	1,7	3,8	17,0	0,87	48		•			
254	1,7	3,8	17,0	0,87	48	•	•	•	•	
254	1,7	3,8	17,0	0,87	48		•			
262	1,7	3,8	17,0	0,87	48	•	•	•	•	
262	1,7	3,8	17,0	0,87	48		•			
264	1,7	3,8	17,0	0,87	48	•	•	•	•	
264	1,7	3,8	17,0	0,87	48		•			
266	1,7	3,8	17,0	0,87	48	•	•	•	•	
266	1,7	3,8	17,0	0,87	48		•			
400 V, 50 Hz, 3 ~, 2700 r/min										
250	2,4	5,3	24,0	0,87	48	•	•	•	•	
250	2,4	5,3	24,0	0,87	48		•			
252	2,4	5,3	24,0	0,87	48	•	•	•	•	
252	2,4	5,3	24,0	0,87	48		•			
254	2,4	5,3	24,0	0,87	48	•	•	•	•	
254	2,4	5,3	24,0	0,87	48		•			
262	2,4	5,3	24,0	0,87	48	•	•	•	•	
262	2,4	5,3	24,0	0,87	48		•			
230 V, 50 Hz, 1 ~, 2730 r/min										
252	1,5	8,9	28,0	0,99	48		•	•	•	•
254	1,5	8,9	28,0	0,99	48		•	•	•	•
264	1,5	8,9	28,0	0,99	48		•	•	•	•
266	1,5	8,9	28,0	0,99	48		•	•	•	•

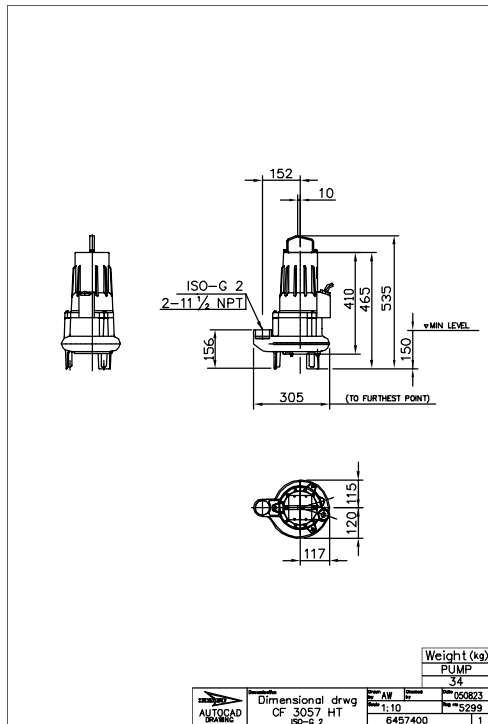


Dimensional drawing

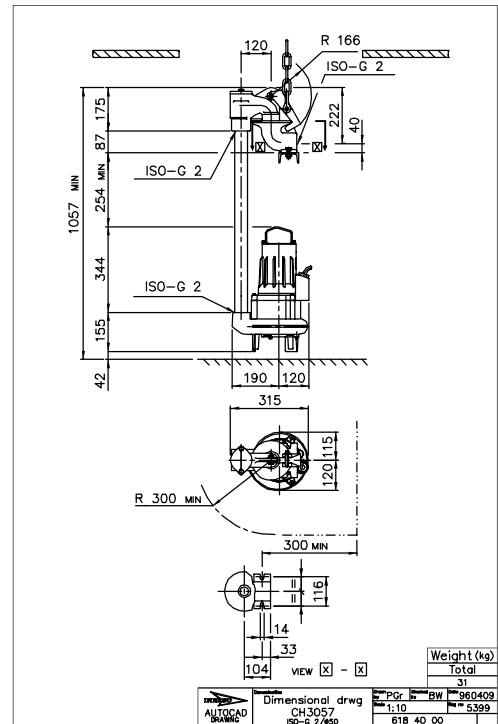
All drawings are available as Acrobat documents (.pdf) and AutoCad drawings (.dwg). Download the drawings from www.flygt.com or contact your ITT Flygt representative for more information.

All dimensions are in mm.

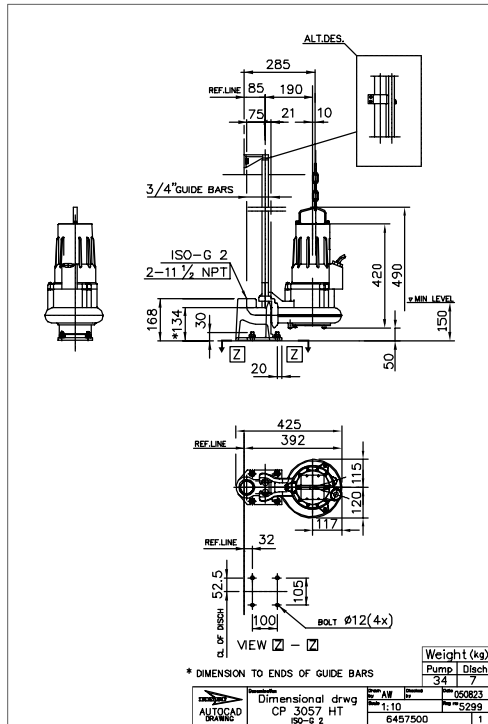
HT, F-installation



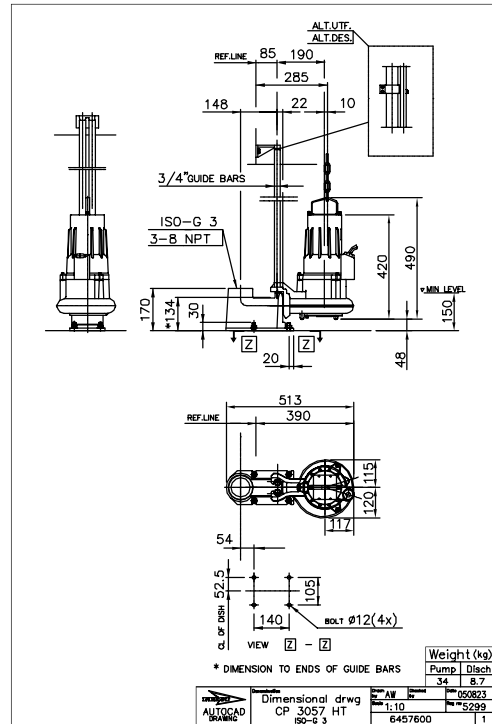
HT, H-installation



HT, P-installation



HT, P-installation



HT, S-installation

