



# C 3068

## Product

Submersible pump for pumping clean water, surface water and waste water containing solids or fibred material.

## Denomination

Product code	3068.180
Installation	F, P
Impeller characteristic	HT

## Process data

Liquid temperature	max +40 °C
Depth of immersion	max 20 m
The pH of the pumped liquid	pH 5,5-14
Liquid density	max. 1100 kg/m <sup>3</sup>
Impeller throatlet	See Motor rating table

## Motor data

Frequency	50 Hz
Insulation class	F (+155 °C)
Voltage variation	
- continuously running	max ± 5%
- intermittent running	max ± 10%
Voltage imbalance between phases	max 2%
No. of starts/hour	max 15

## Cable

<b>Direct-on-line start</b>	
SUBCAB®	4G2,5 mm <sup>2</sup>
	4G2,5+2x1,5 mm <sup>2</sup>

<b>Y/D start</b>	
SUBCAB®	7G2,5 mm <sup>2</sup>

## Monitoring equipment

Thermal contacts opening temperature	125 °C
--------------------------------------	--------

## Material

Impeller	Cast iron
Pump housing	Cast iron
Stator housing	Cast iron
Shaft	Magnetic stainless steel
O-rings	Fluorinated rubber

## Mechanical face seals

Alternative	Inner seal	Outer seal
1	Aluminium oxide/ Aluminium oxide	Aluminium oxide/ Aluminium oxide
2	Aluminium oxide/ Aluminium oxide	Corrosion resistant cemented carbide/ Corrosion resistant cemented carbide
3	Aluminium oxide/ Aluminium oxide	Silicon carbide/Silicon carbide
4	Corrosion resistant cemented carbide/ Corrosion resistant cemented carbide	Aluminium oxide/ Aluminium oxide
5	Corrosion resistant cemented carbide/ Corrosion resistant cemented carbide	Corrosion resistant cemented carbide/ Corrosion resistant cemented carbide
6	Corrosion resistant cemented carbide/ Corrosion resistant cemented carbide	Silicon carbide/Silicon carbide
7	Carbon/Aluminium oxide	Aluminium oxide/ Aluminium oxide
8	Carbon/Aluminium oxide	Corrosion resistant cemented carbide/ Corrosion resistant cemented carbide
9	Carbon/Aluminium oxide	Silicon carbide/Silicon carbide

## Surface Treatment

All cast parts are coated with a primer. The finish coat is a synthetic varnish.

## Weight

See dimensional drawing.

## Option

3068.090	Ex. proof design
Warm liquid version on request	
Leakage sensor in stator housing	FLS
Surface treatment	Epoxy treatment
Other cables	
Zinc anodes	

## Accessories

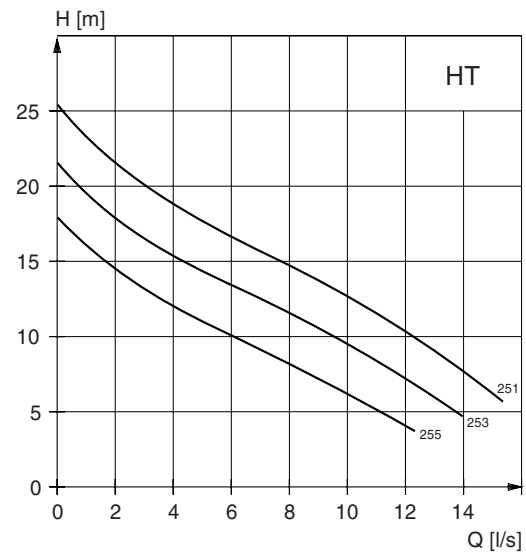
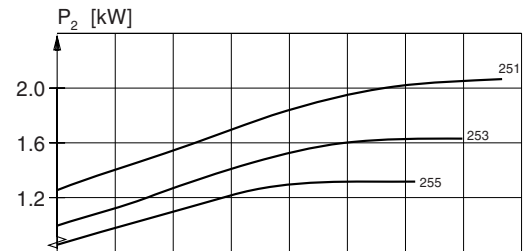
Discharge connections, adapters, hose connections and other mechanical accessories.

Electrical accessories such as pump controller, control panels, starters, monitoring relays, cables.

See separate booklet or [www.flygt.com](http://www.flygt.com) for further information.

## HT-Motor rating and performance curve

Curve/Impeller No	Rated power, kW	Rated current, A	Starting current, A	Power factor cos φ	Impeller throatlet, mm	Ex proof version available	Installation			
							F	P		
<b>400 V, 50 Hz, 3 ~, 2700 r/min</b>										
253	1,7	3,8	17,0	0,87	34	•	•	•		
255	1,7	3,8	17,0	0,87	34	•	•	•		
<b>230 V, 50 Hz, 3 ~, 2705 r/min</b>										
251	2,4	5,3	24,0	0,87	34	•	•	•		
253	2,4	5,3	24,0	0,87	34	•	•	•		
255	2,4	5,3	24,0	0,87	34	•	•	•		
<b>230 V, 50 Hz, 1 ~, 2730 r/min</b>										
253	1,5	8,9	28,0	0,99	34		•	•		
255	1,5	8,9	28,0	0,99	34		•	•		

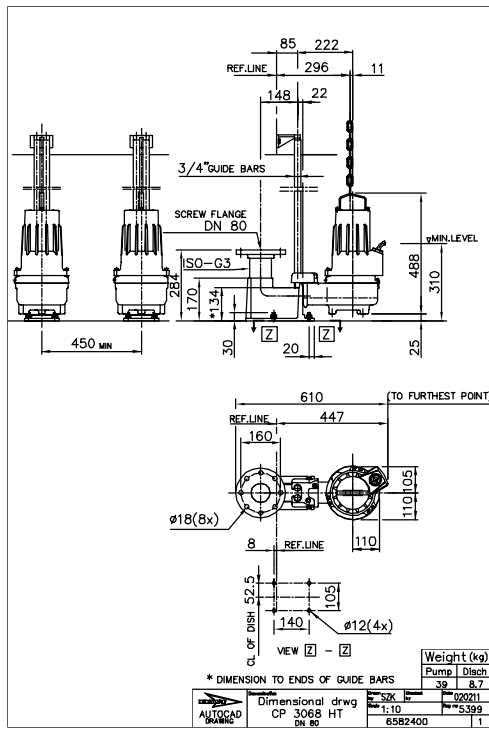


### Dimensional drawing

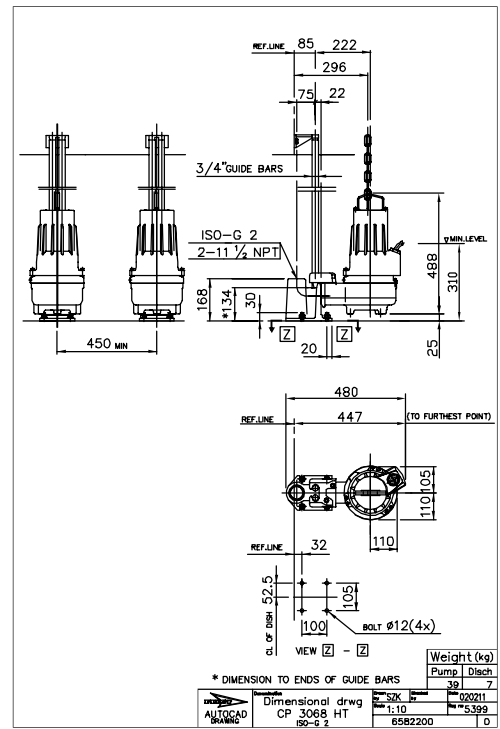
All drawings are available as Acrobat documents (.pdf) and AutoCad drawings (.dwg). Download the drawings from [www.flygt.com](http://www.flygt.com) or contact your ITT Flygt representative for more information.

All dimensions are in mm.

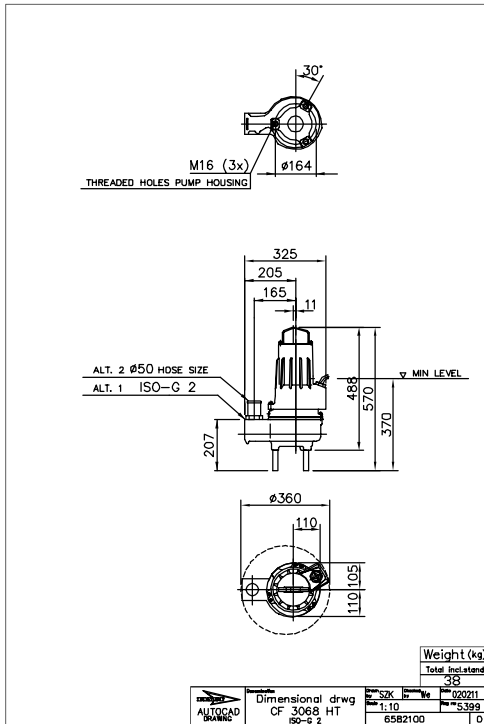
#### HT, F-installation



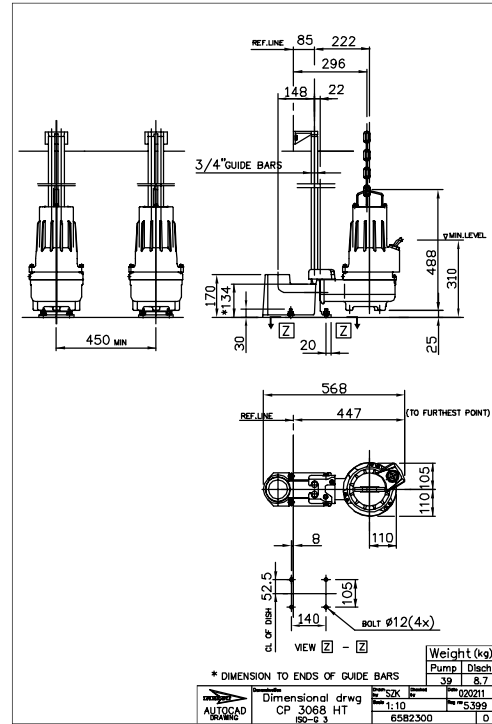
#### HT, P-installation



HT, P-installation



HT, P-installation



HT, S-installation

