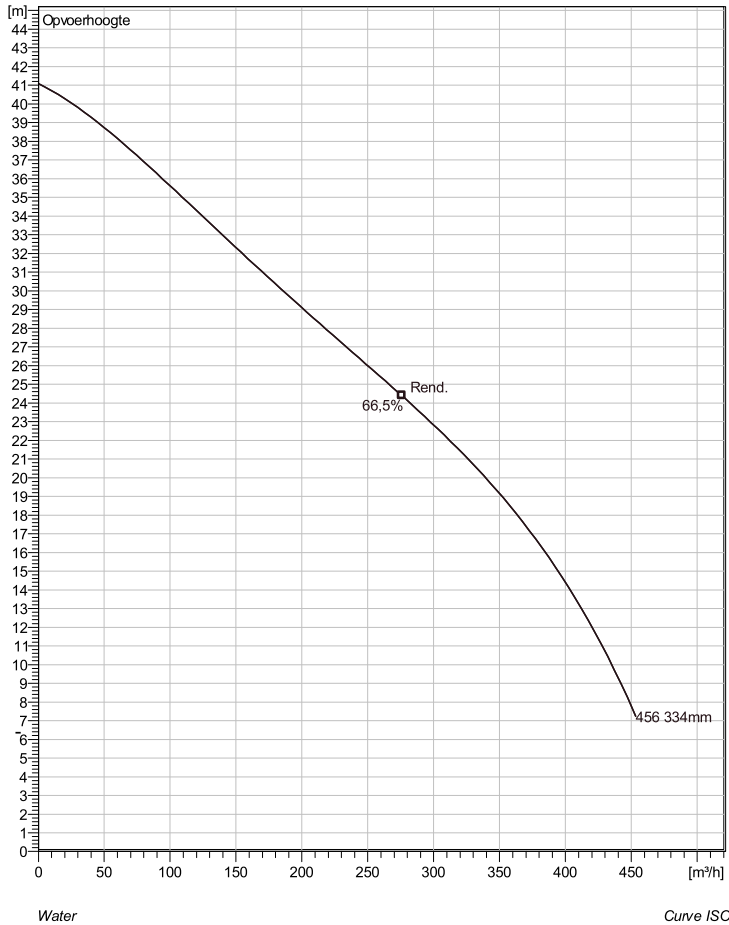
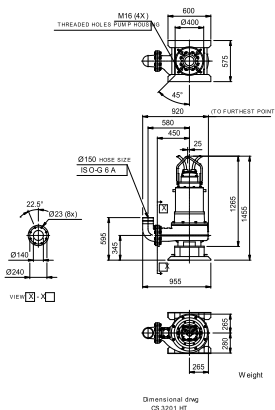


CS 3201 HT 3~ 456 Technische specificaties



Soort installatie: Semi permanent, Nat



Note: Picture might not correspond to the current configuration.

General

Dompelbare pompen voorzien van één of meerkanaalwaaier met grote doorlaat. Geschikt voor afvalwater met grotere delen zoals rioolwater, regenwater en industrieel afvalwater. Materiaal gietijzer.

Impeller

Impeller material	Stainless steel
Persaansluiting	150 mm
Diameter aanzuigzijde	150 mm
Impeller diameter	334 mm
Aantal bladen	1
Throughlet diameter	77 mm

Motor

Motor #	C3201.280 27-26-4AA-W 30KW standaard
Stator variant	28
Frequentie	50 Hz
Nominale spanning	190 V
Aantal polen	4
Fasen	3~
Nominaal vermogen	30 kW
Toegekende stroom	124 A
Aanloopstroom	935 A
Nominaal toerental	1465 rpm
Vermogensfactor	
1/1 Load	0,84
3/4 Load	0,79
1/2 Load	0,68
Motor efficiency	
1/1 Load	87,5 %
3/4 Load	87,5 %
1/2 Load	85,5 %

Project	Project ID	Created by	Created on 10/4/2018	Last update
---------	------------	------------	-------------------------	-------------

CS 3201 HT 3~ 456

Karakteristiek

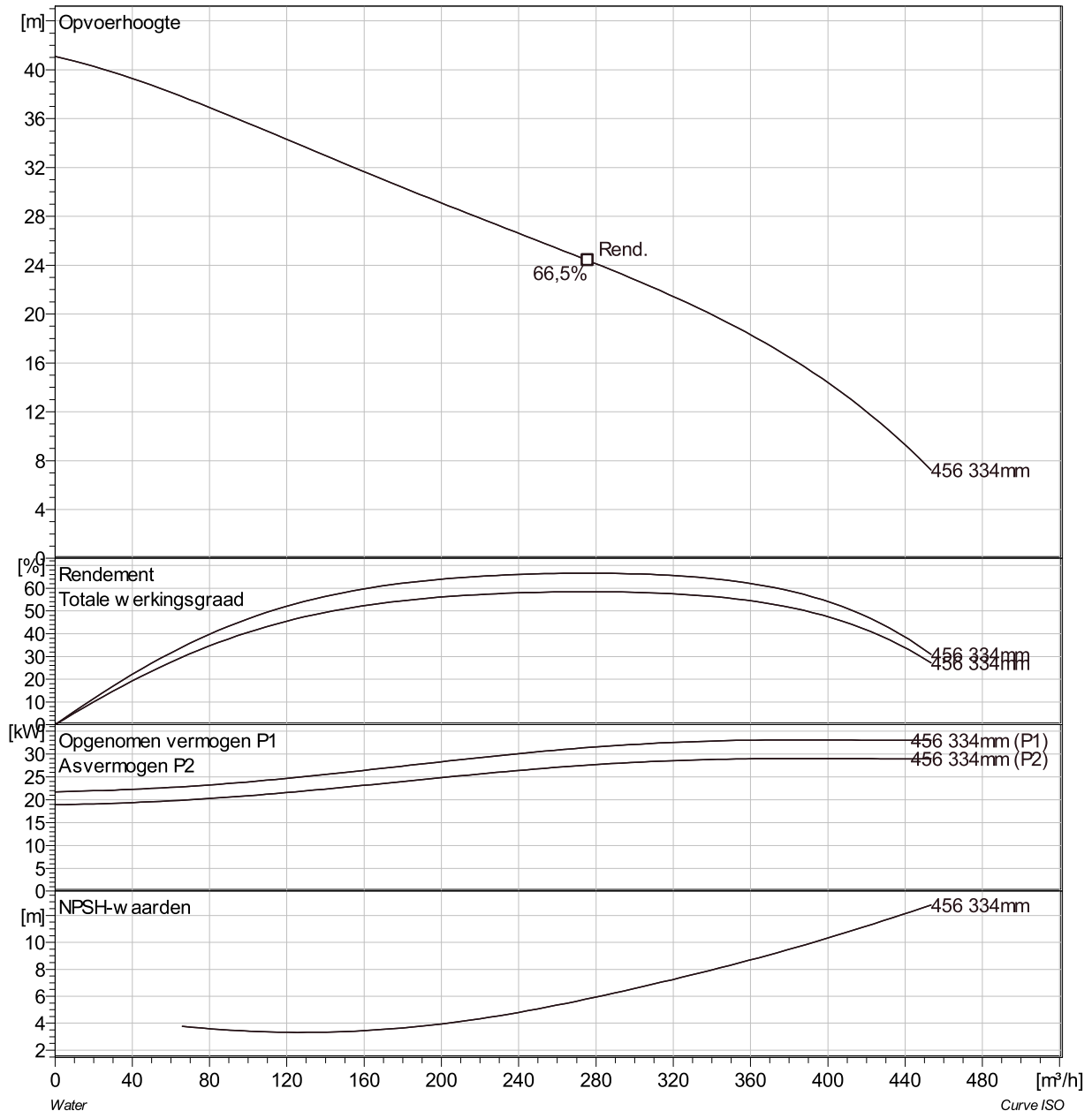
Pomp

Persaansluiting	150 mm
Diameter aanzuigzijde	150 mm
Impeller diameter	334 mm
Aantal bladen	1
Throughlet diameter	77 mm

Motor

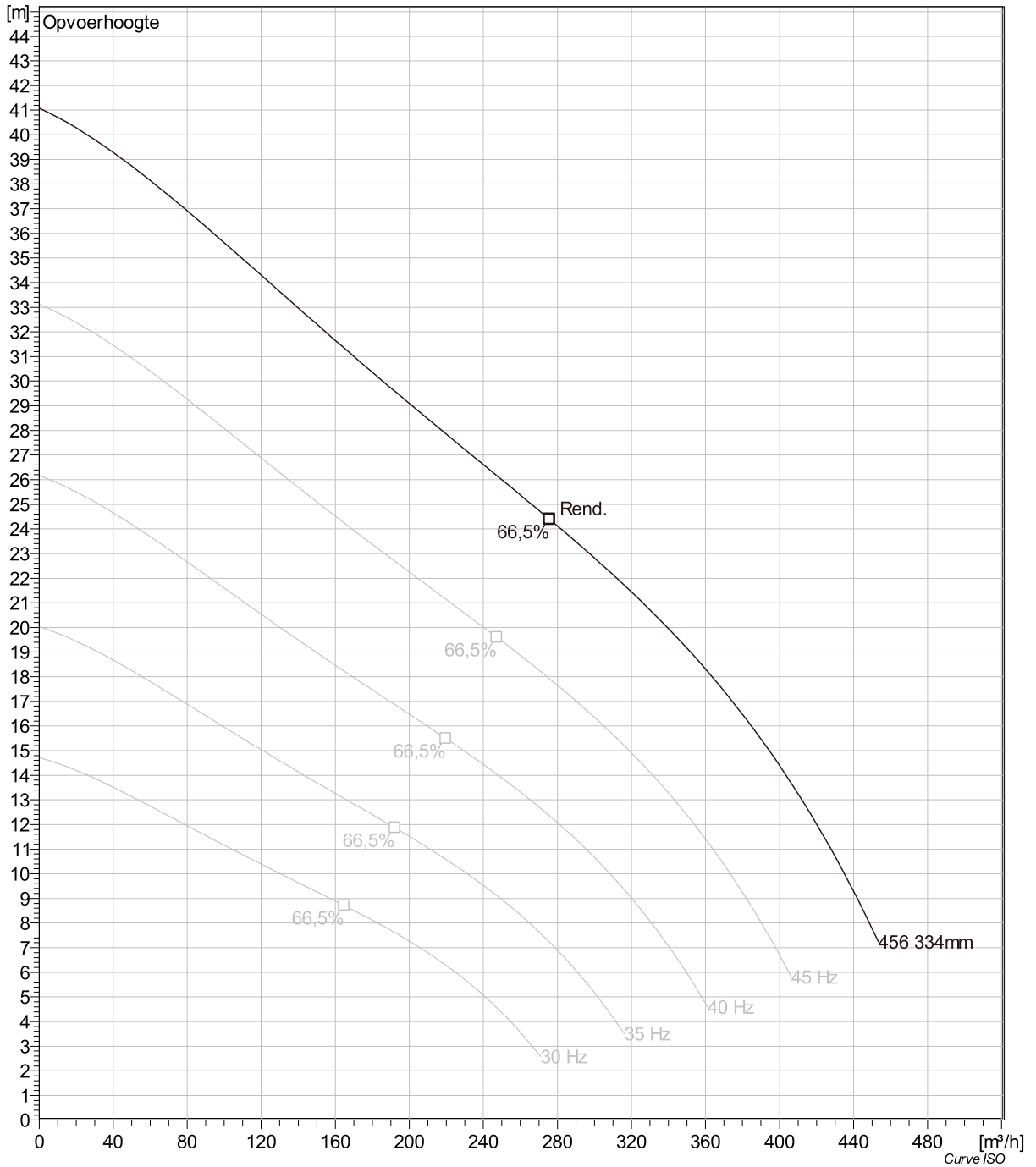
Motor #	C3201.280 27-26-4AA-W 30KW
Stator variant	28
Frequentie	50 Hz
Nominale spanning	190 V
Aantal polen	4
Fasen	3~
Nominaal vermogen	30 kW
Toegekende stroom	124 A
Aanloopstroom	935 A
Nominaal toerental	1465 rpm

Vermogensfactor	
1/1 Load	0,84
3/4 Load	0,79
1/2 Load	0,68
Motor efficiency	
1/1 Load	87,5 %
3/4 Load	87,5 %
1/2 Load	85,5 %



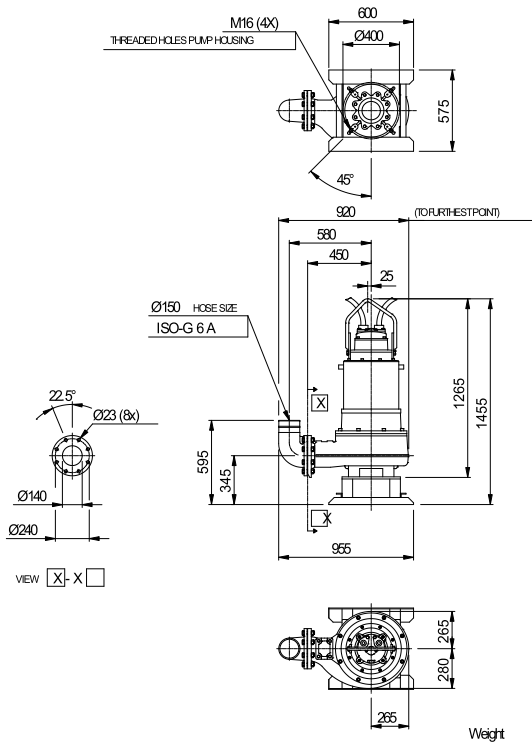
Project	Project ID	Created by	Created on 10/4/2018	Last update
---------	------------	------------	-------------------------	-------------

CS 3201 HT 3~ 456 VFD Analysis



Project	Project ID	Created by	Created on	Last update
			10/4/2018	

CS 3201 HT 3~ 456 Dimensional drawing



Dimensional drwg
CS3201 HT

Project	Project ID	Created by	Created on	Last update
			10/4/2018	