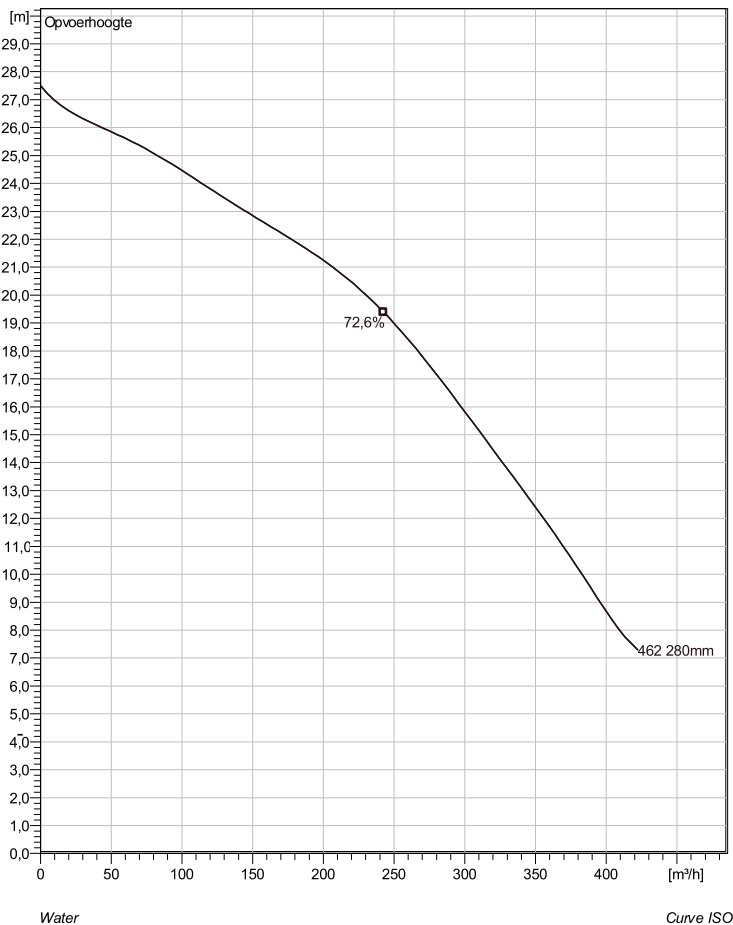


## CS 3201 HT 3~ 462

### Technische specificaties



Note: Picture might not correspond to the current configuration.

#### General

Dompelbare pompen voorzien van één of meerkanaalwaaier met grote doorlaat. Geschikt voor afvalwater met grotere delen zoals rioolwater, regenwater en industrieel afvalwater. Materiaal gietijzer.

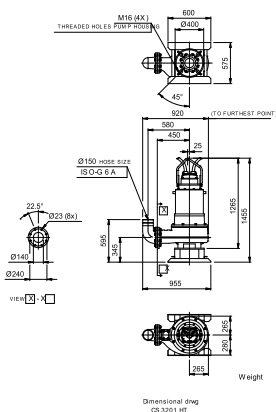
#### Impeller

Impeller material	Stainless steel
Persaansluiting	150 mm
Diameter aanzuigzijde	150 mm
Impeller diameter	280 mm
Aantal bladen	3
Throughlet diameter	59 mm

#### Motor

Motor #	C3201.280 27-20-4FA-W 22KW standaard
Stator variant	34
Frequentie	50 Hz
Nominale spanning	220 V
Aantal polen	4
Fasen	3~
Nominaal vermogen	22 kW
Toegekende stroom	75 A
Aanloopstroom	495 A
Nominaal toerental	1455 rpm
Vermogensfactor	
1/1 Load	0,88
3/4 Load	0,86
1/2 Load	0,79
Motor efficiency	
1/1 Load	86,5 %
3/4 Load	87,0 %
1/2 Load	86,0 %

Soort installatie: Semi permanent, Nat



Project	Project ID	Created by	Created on	Last update
			10/4/2018	

## CS 3201 HT 3~ 462

### Karakteristiek

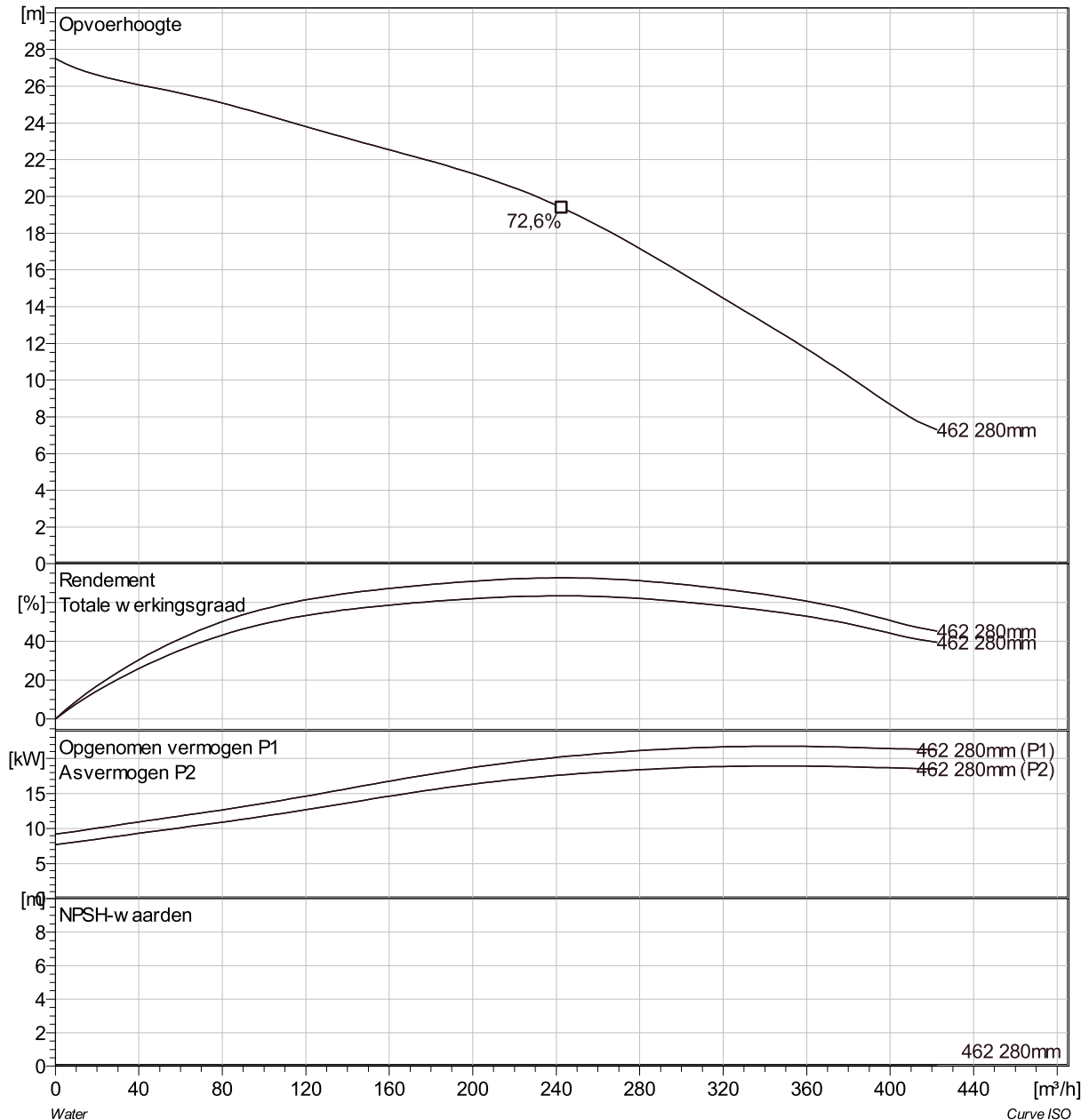
#### Pomp

Persaansluiting	150 mm
Diameter aanzuigzijde	150 mm
Impeller diameter	280 mm
Aantal bladen	3
Throughlet diameter	59 mm

#### Motor

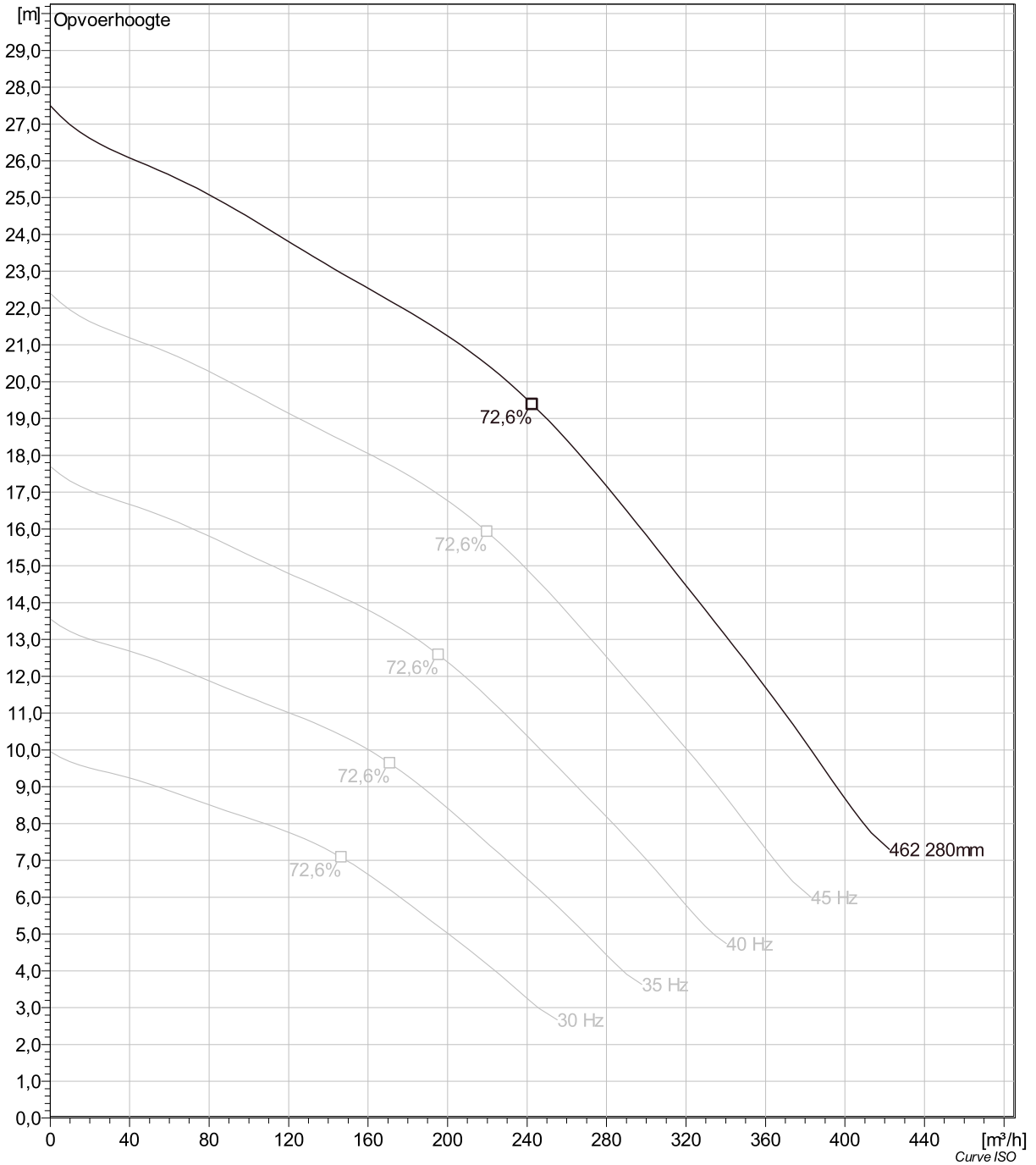
Motor #	C3201.280 27-20-4FA-W 22KW
Stator variant	34
Frequentie	50 Hz
Nominale spanning	220 V
Aantal polen	4
Fasen	3~
Nominaal vermogen	22 kW
Toegekende stroom	75 A
Aanloopstroom	495 A
Nominaal toerental	1455 rpm

Vermogensfactor	
1/1 Load	0,88
3/4 Load	0,86
1/2 Load	0,79
Motor efficiency	
1/1 Load	86,5 %
3/4 Load	87,0 %
1/2 Load	86,0 %



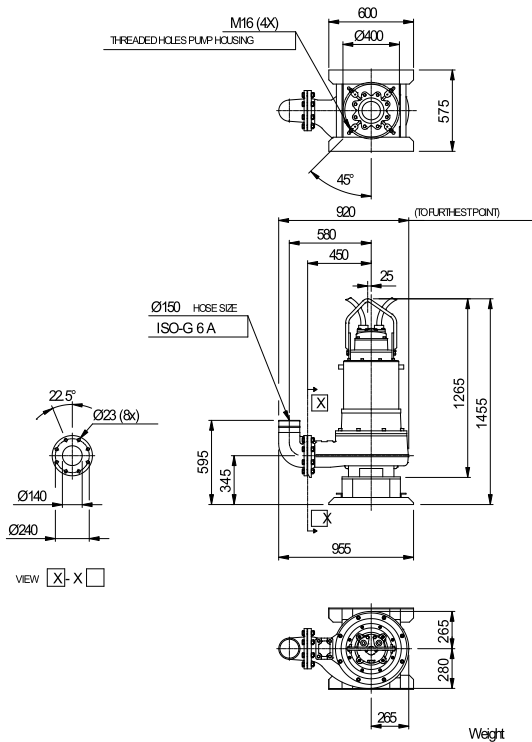
Project	Project ID	Created by	Created on 10/4/2018	Last update
---------	------------	------------	-------------------------	-------------

## CS 3201 HT 3~ 462 VFD Analysis



Project	Project ID	Created by	Created on	Last update
			10/4/2018	

## CS 3201 HT 3~ 462 Dimensional drawing



Dimensional drwg  
CS3201 HT

Project	Project ID	Created by	Created on	Last update
			10/4/2018	