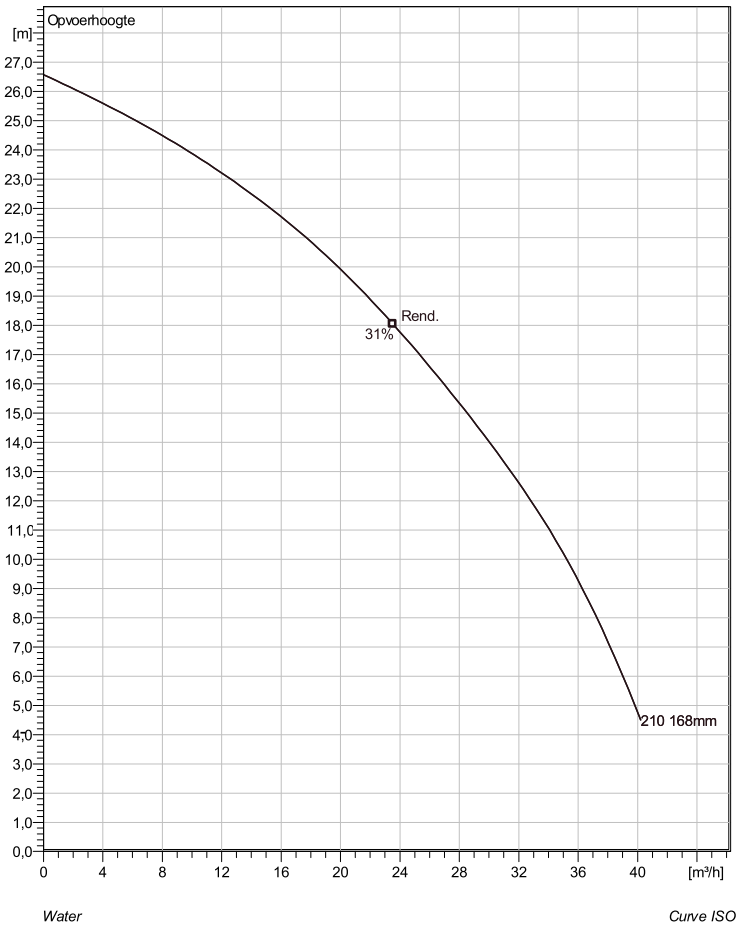


MP 3102 LT 3~ 210

Technische specificaties



Note: Picture might not correspond to the current configuration.

General

Dompelbare versnijdende pompen specifiek ontwikkeld voor drukriolerings toepassingen. Door de versnijdende werking en hoge druk die de pomp levert, geschikt voor lange leidingtracés.

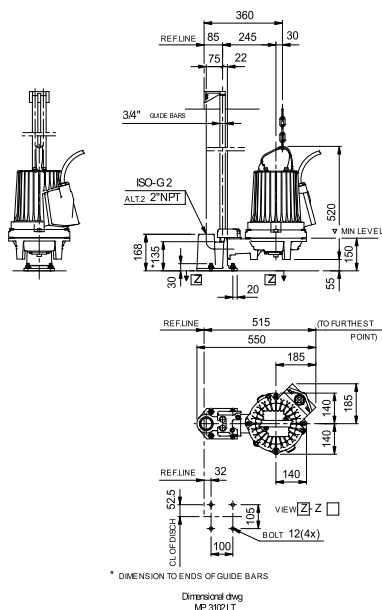
Impeller

Impeller material	Grey cast iron
Persaansluiting	50 mm
Inlet diameter	50 mm
Impeller diameter	168 mm
Number of blades	6

Motor

Motor #	M3102.170 18-10-2AL-W 4.4KW
Approval	standaard
Stator variant	38
Frequentie	50 Hz
Nominale spanning	400 V
Aantal polen	2
Fasen	3~
Nominaal vermogen	4,4 kW
Toegekende stroom	8,6 A
Aanloopstroom	64 A
Nominaal toerental	2870 rpm
Vermogensfactor	
1/1 Load	0,92
3/4 Load	0,89
1/2 Load	0,83
Motor efficiency	
1/1 Load	80,5 %
3/4 Load	81,0 %
1/2 Load	79,0 %

Installation: P - Semi Permanent, Nat



Configuration



T 0294-457712 F 0294-457713 Info@Pompdirect.nl

Project	Project ID	Created by	Created on	Last update
			27/10/16	

MP 3102 LT 3~ 210

Karakteristiek

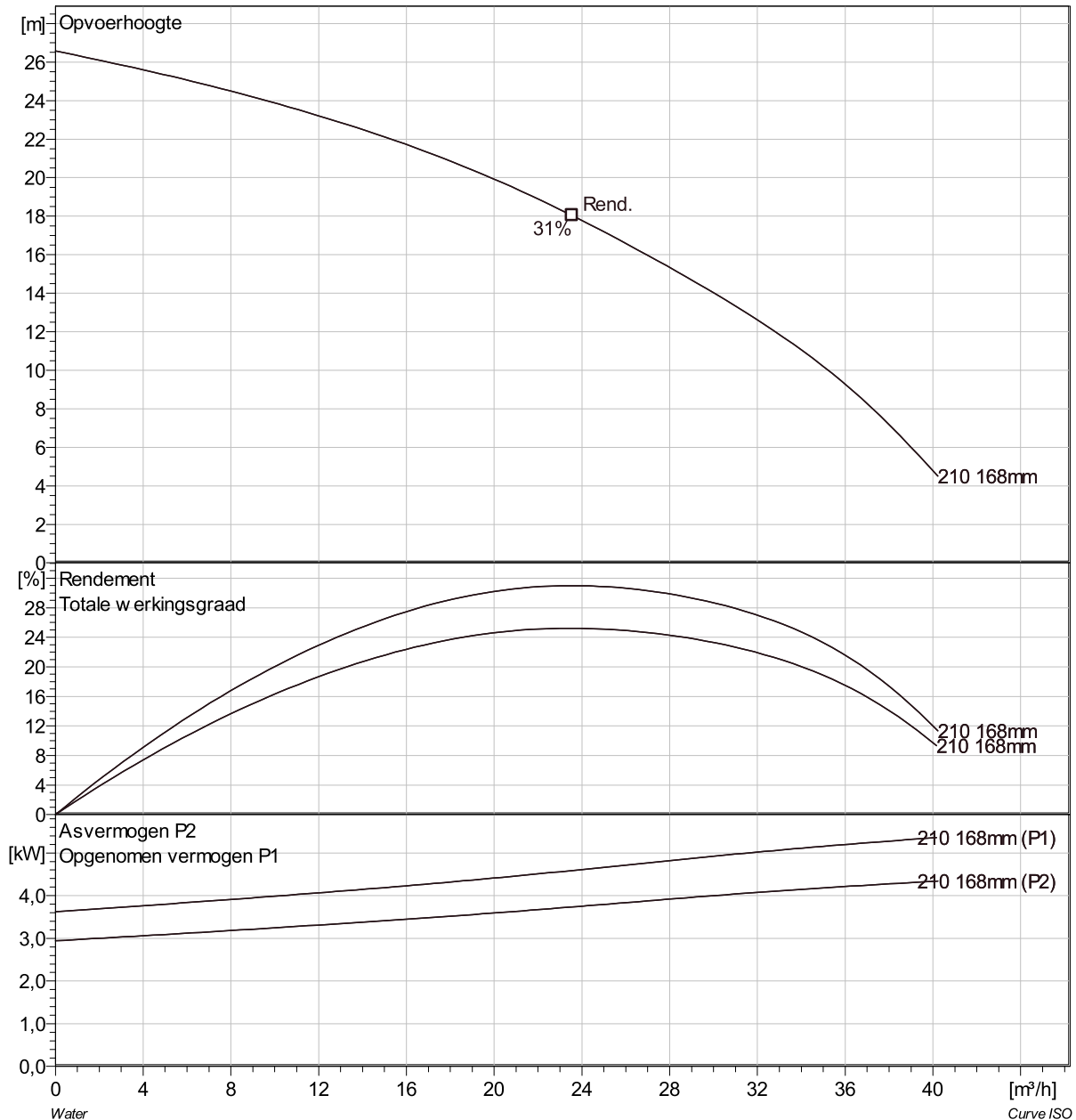
Pomp

Persaansluiting	50 mm
Inlet diameter	50 mm
Impeller diameter	168 mm
Number of blades	6

Motor

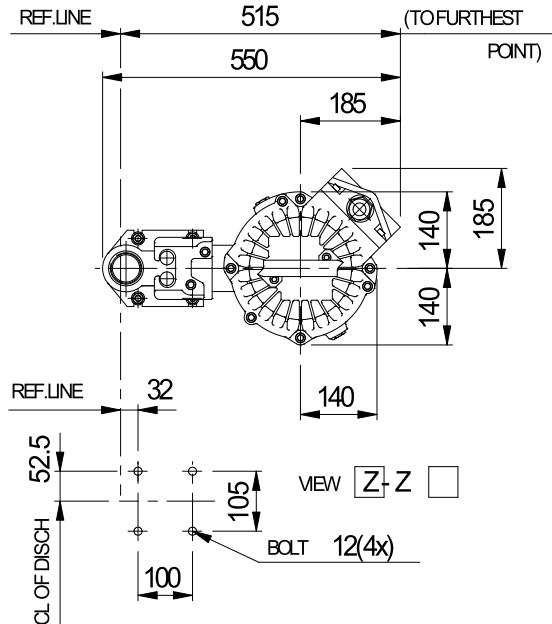
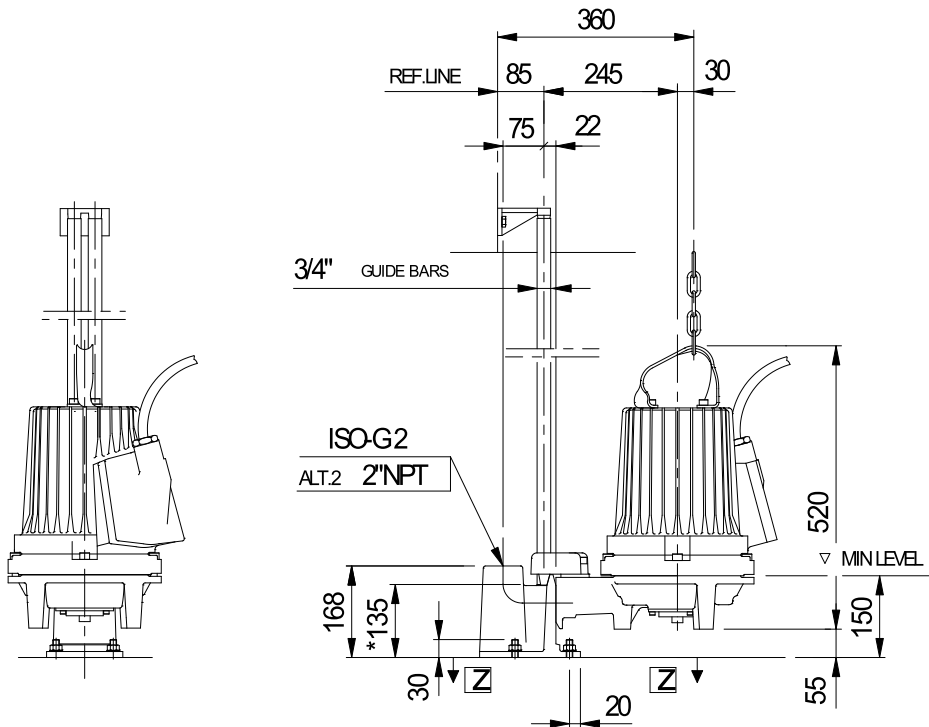
Motor #	M3102.170 18-10-2AL-W 4.4KW
Approval	standaard
Stator variant	38
Frequentie	50 Hz
Nominale spanning	400 V
Aantal polen	2
Fasen	3~
Nominaal vermogen	4,4 kW
Toegekende stroom	8,6 A
Aanloopstroom	64 A
Nominaal toerental	2870 rpm

Vermogensfactor	
1/1 Load	0,92
3/4 Load	0,89
1/2 Load	0,83
Motor efficiency	
1/1 Load	80,5 %
3/4 Load	81,0 %
1/2 Load	79,0 %



Project	Project ID	Created by	Created on 27/10/16	Last update
---------	------------	------------	------------------------	-------------

MP 3102 LT 3~ 210 Dimensional drawing



* DIMENSION TO ENDS OF GUIDE BARS

Dimensional dwg
MP3102LT

Project	Project ID	Created by	Created on	Last update
			27/10/16	