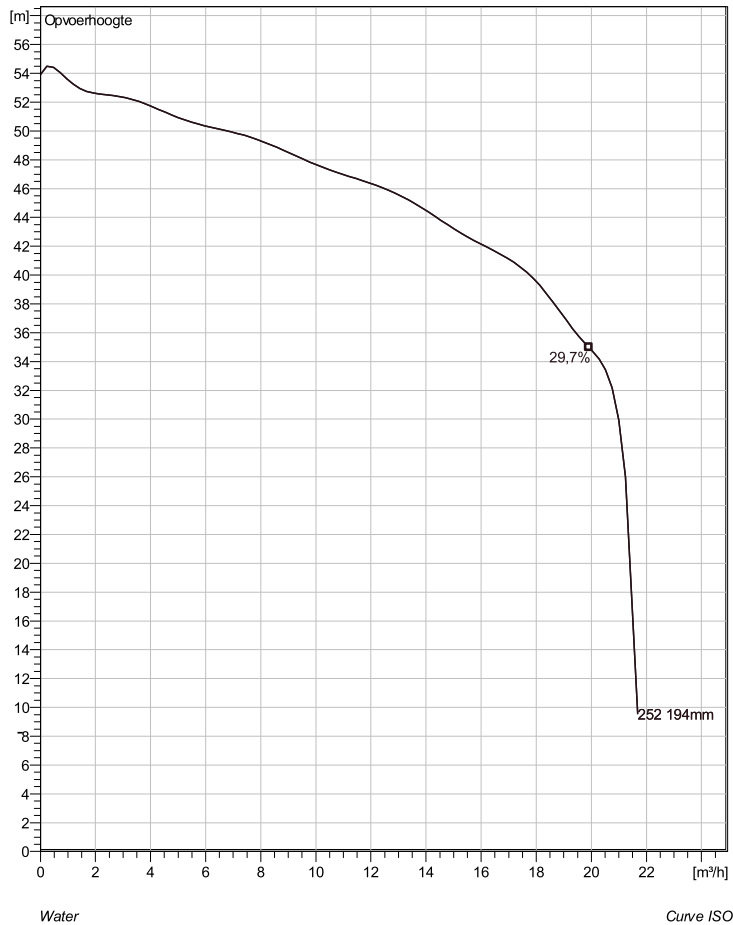


MP 3127 HT 3~ 252

Technische specificaties



Note: Picture might not correspond to the current configuration.

General

Dompelbare v ersnijdende pompen specifiek ontwikkeld voor drukriolerings toepassingen. Door de v ersnijdende werking en hoge druk die pomp levert, geschikt voor lange leidingtracé's.

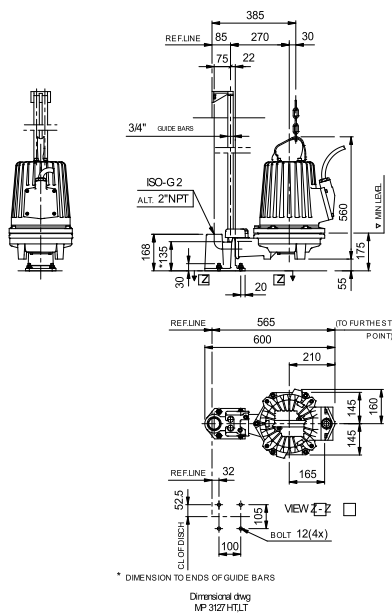
Impeller

Impeller material	Grey cast iron
Persaansluiting	50 mm
Inlet diameter	50 mm
Impeller diameter	194 mm
Number of blades	6

Motor

Motor #	M3127.170 21-11-2AL-W 7.4KW
Approval	standaard
Stator variant	40
Frequentie	50 Hz
Nominale spanning	400 V
Aantal polen	2
Fasen	3~
Nominaal vermogen	7,4 kW
Toegekende stroom	16 A
Aanloopstroom	146 A
Nominaal toerental	2920 rpm
Vermogensfactor	
1/1 Load	0,78
3/4 Load	0,70
1/2 Load	0,58
Motor efficiency	
1/1 Load	87,0 %
3/4 Load	86,8 %
1/2 Load	84,7 %

Installation: P - Semi Permanent, Nat



Configuration



T 0294-457712 F 0294-457713 Info@Pompdirect.nl

Project	Project ID	Created by	Created on	Last update
			27.10.2016	

MP 3127 HT 3~ 252

Karakteristiek

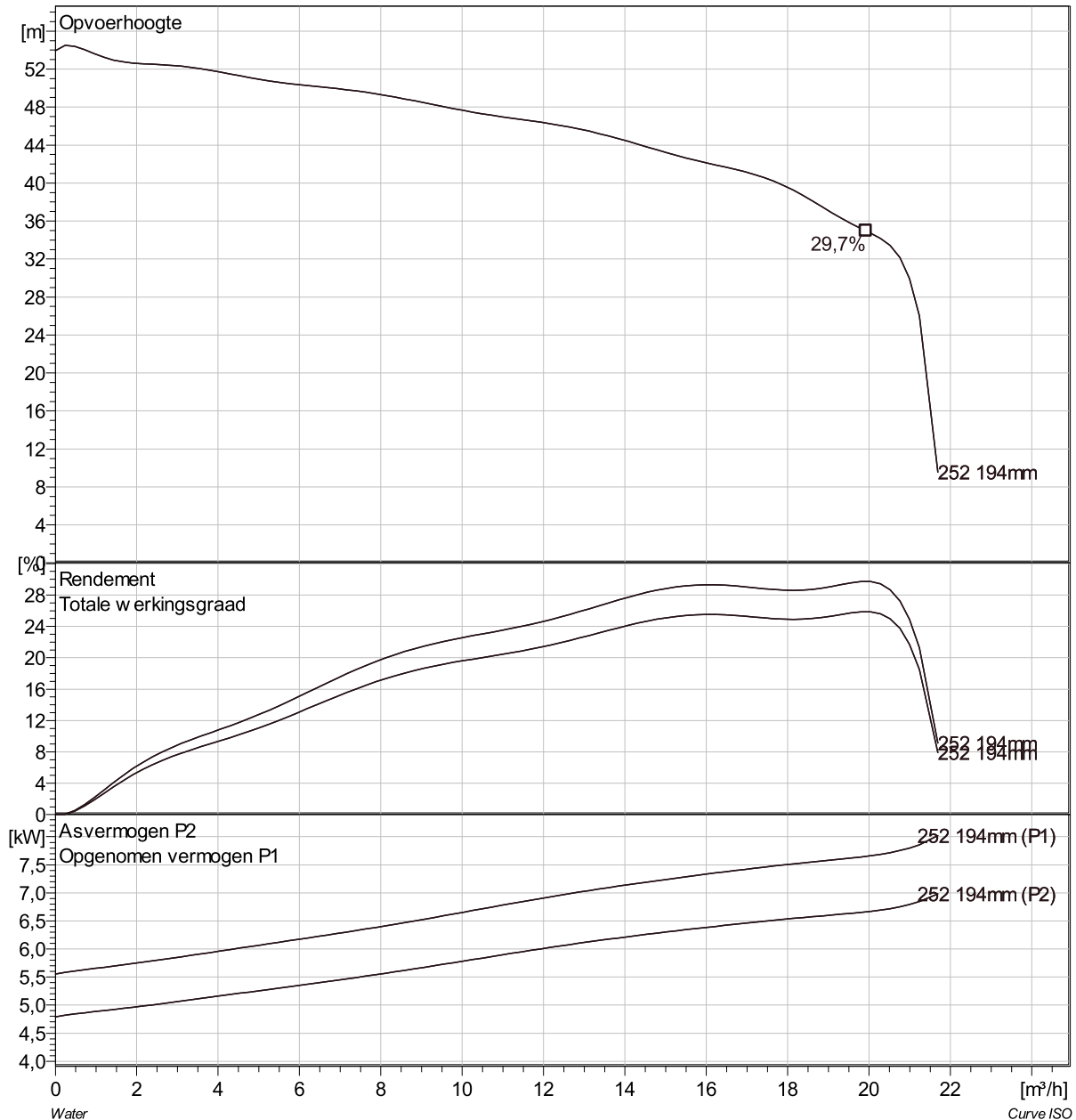
Pomp

Persaansluiting	50 mm
Inlet diameter	50 mm
Impeller diameter	194 mm
Number of blades	6

Motor

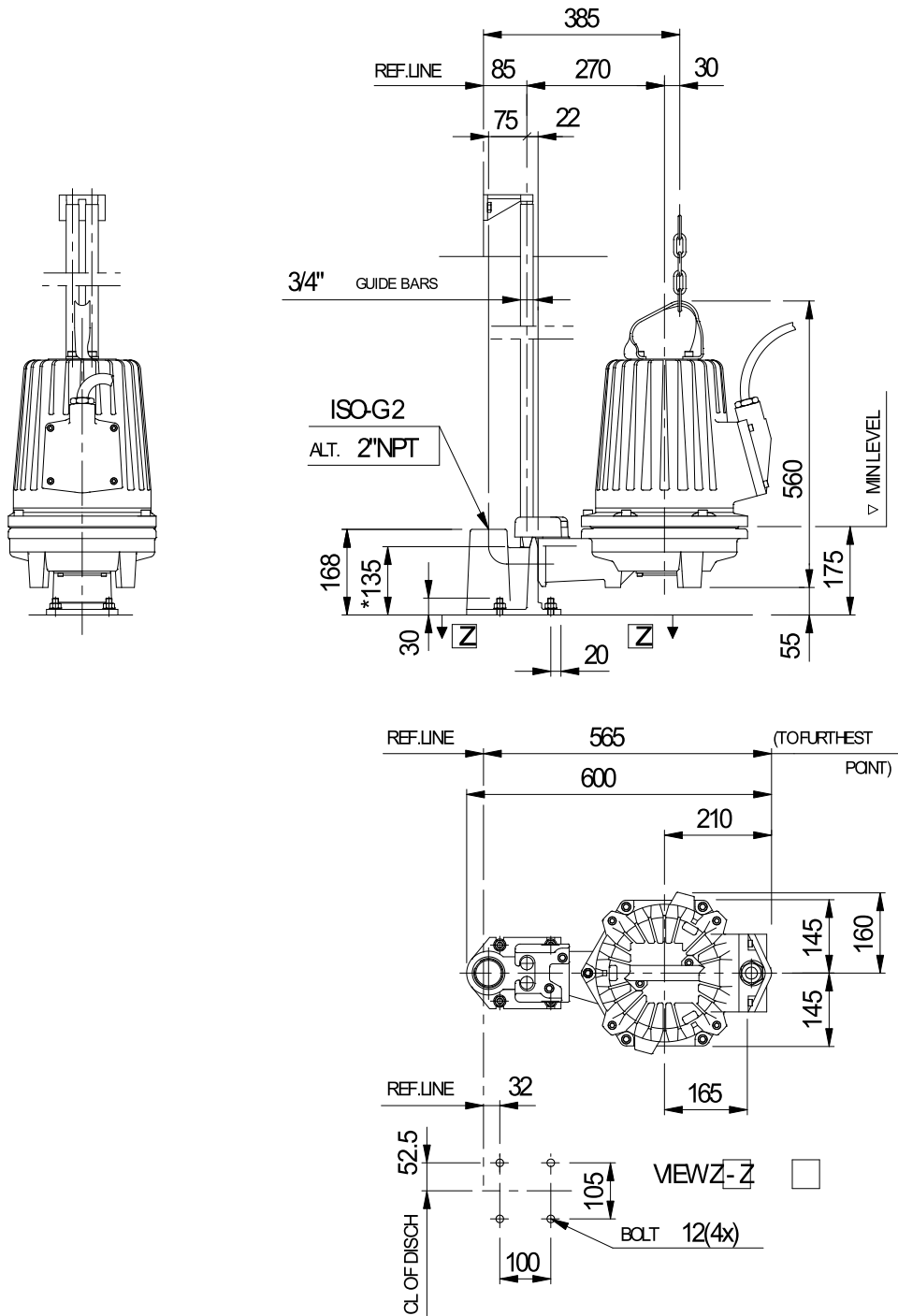
Motor #	M3127.170 21-11-2AL-W 7.4KW
Approval	standaard
Stator variant	40
Frequentie	50 Hz
Nominale spanning	400 V
Aantal polen	2
Fasen	3~
Nominaal vermogen	7,4 kW
Toegekende stroom	16 A
Aanloopstroom	146 A
Nominaal toerental	2920 rpm

Vermogensfactor	
1/1 Load	0,78
3/4 Load	0,70
1/2 Load	0,58
Motor efficiency	
1/1 Load	87,0 %
3/4 Load	86,8 %
1/2 Load	84,7 %



Project	Project ID	Created by	Created on 27.10.2016	Last update
---------	------------	------------	--------------------------	-------------

MP 3127 HT 3~ 252 Dimensional drawing



* DIMENSION TO ENDS OF GUIDE BARS

Dimensional dwg
MP3127HT,LT

Project	Project ID	Created by	Created on	Last update
			27.10.2016	