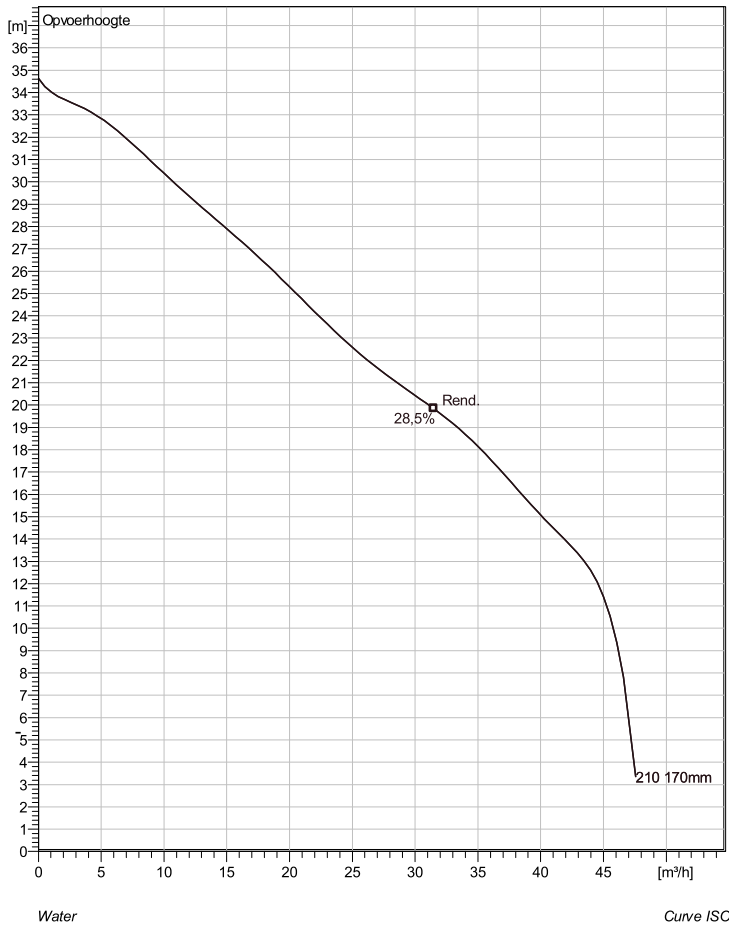


## MP 3127 LT 3~ 210

### Technische specificaties



Note: Picture might not correspond to the current configuration.

#### General

Dompelbare versnijdende pompen specifiek ontwikkeld voor drukriolerings toepassingen. Door de versnijdende werking en hoge druk die pomp levert, geschikt voor lange leidingtracés.

#### Impeller

Impeller material	Grey cast iron
Persaansluiting	50 mm
Inlet diameter	50 mm
Impeller diameter	170 mm
Number of blades	6

#### Motor

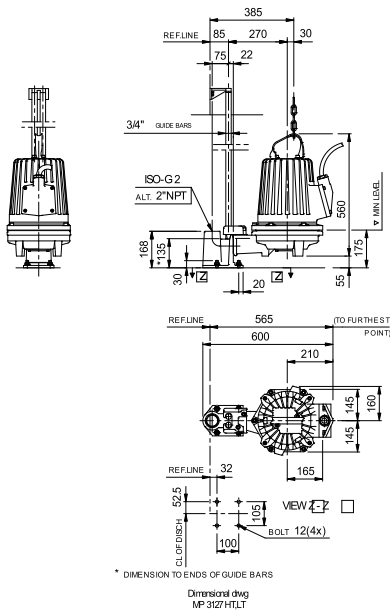
Motor #	M3127.170 21-11-2AL-W 7.4KW
Approval	standaard
Stator variant	40
Frequentie	50 Hz
Nominale spanning	400 V
Aantal polen	2
Fasen	3~
Nominaal vermogen	7,4 kW
Toegekende stroom	16 A
Aanloopstroom	146 A
Nominaal toerental	2920 rpm
Vermogensfactor	
1/1 Load	0,78
3/4 Load	0,70
1/2 Load	0,58
Motor efficiency	
1/1 Load	87,0 %
3/4 Load	86,8 %
1/2 Load	84,7 %

#### Configuration



T 0294-457712 F 0294-457713 [Info@Pompdirect.nl](mailto:Info@Pompdirect.nl)

#### Installation: P - Semi Permanent, Nat



Project	Project ID	Created by	Created on	Last update
			27.10.2016	

## MP 3127 LT 3~ 210

### Karakteristiek

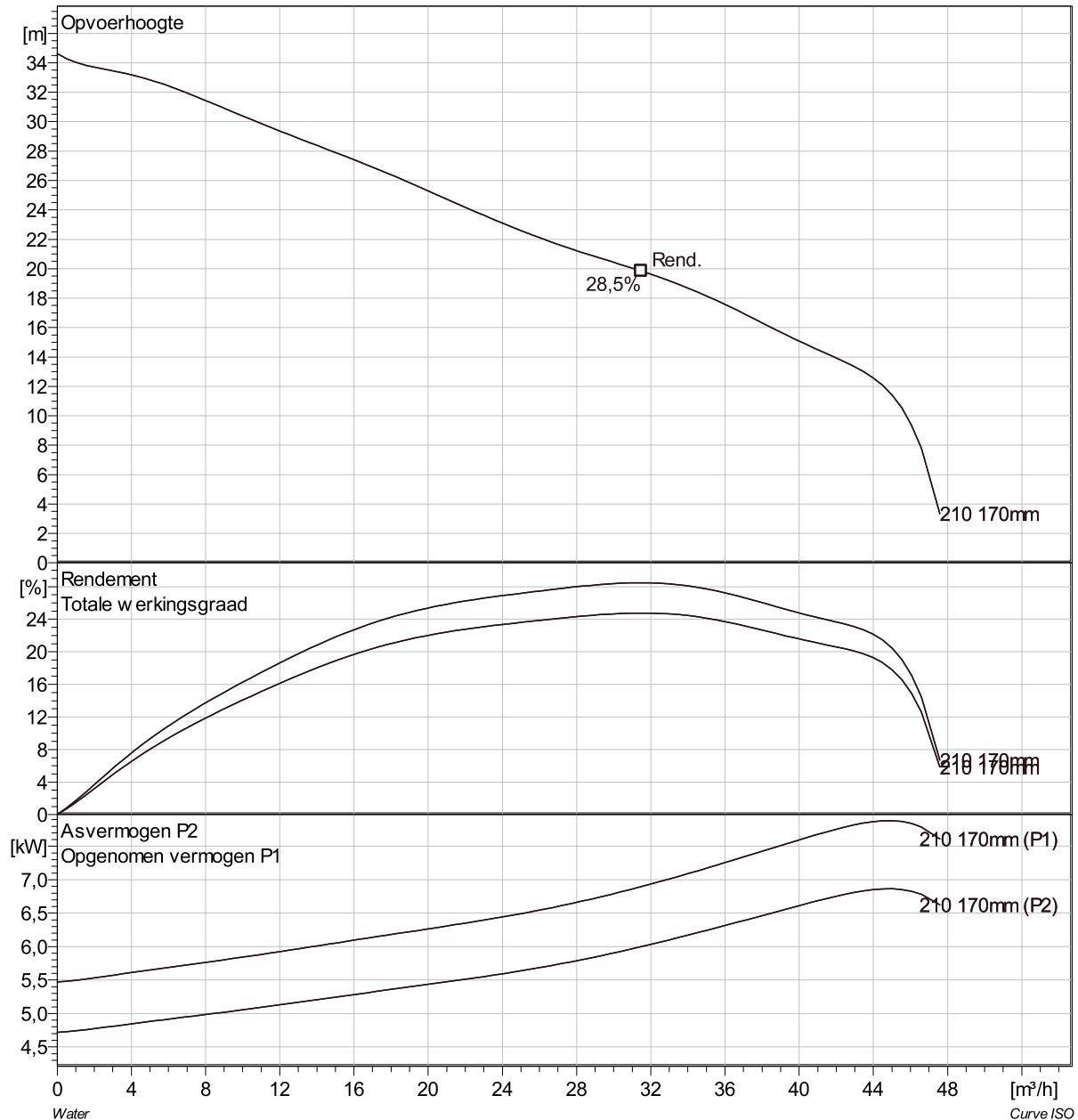
#### Pomp

Persaansluiting	50 mm
Inlet diameter	50 mm
Impeller diameter	170 mm
Number of blades	6

#### Motor

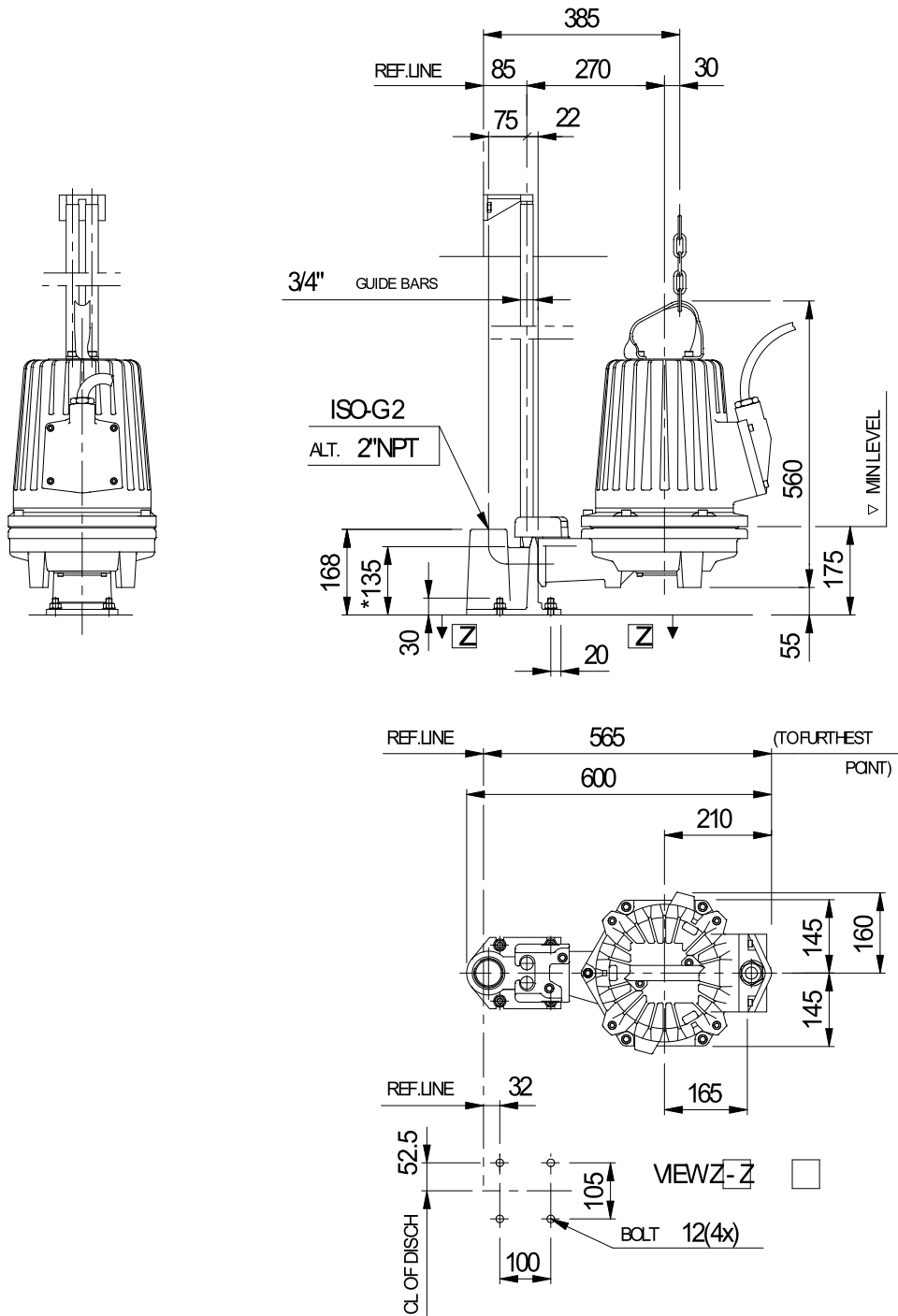
Motor #	M3127.170 21-11-2AL-W 7.4KW
Approval	standaard
Stator variant	40
Frequentie	50 Hz
Nominale spanning	400 V
Aantal polen	2
Fasen	3~
Nominaal vermogen	7,4 kW
Toegekende stroom	16 A
Aanloopstroom	146 A
Nominaal toerental	2920 rpm

Vermogensfactor	
1/1 Load	0,78
3/4 Load	0,70
1/2 Load	0,58
Motor efficiency	
1/1 Load	87,0 %
3/4 Load	86,8 %
1/2 Load	84,7 %



Project	Project ID	Created by	Created on 27.10.2016	Last update
---------	------------	------------	--------------------------	-------------

## MP 3127 LT 3~ 210 Dimensional drawing



\* DIMENSION TO ENDS OF GUIDE BARS

Dimensional dwg  
MP3127HT,LT

Project	Project ID	Created by	Created on	Last update
			27.10.2016	