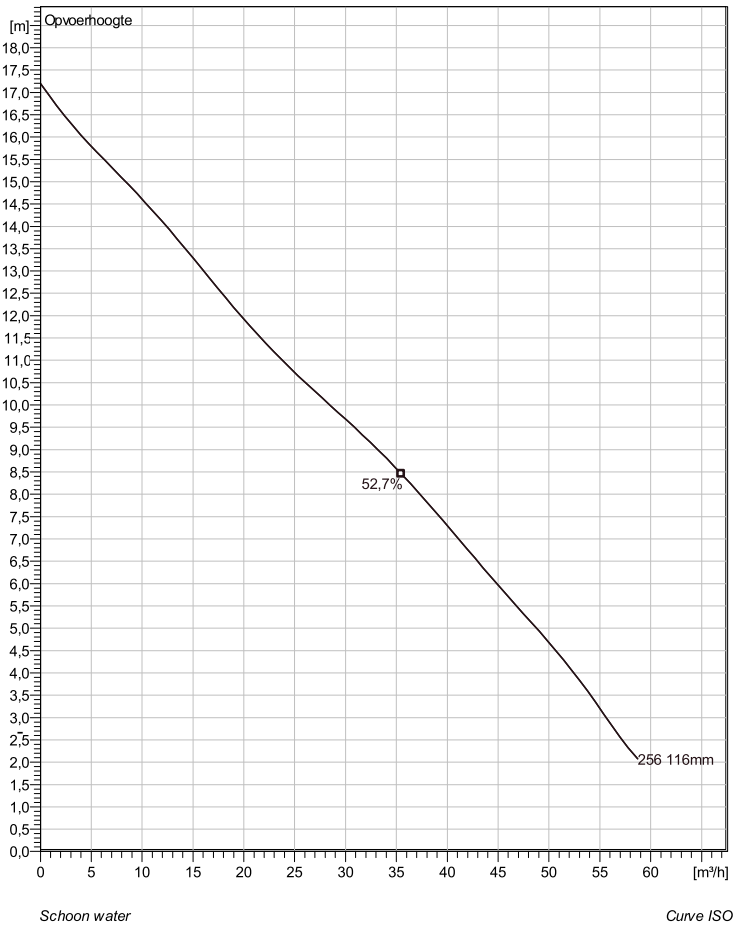


## NP 3085 SH 3~ Adaptive 256 Technische specificaties



Note: Picture might not correspond to the current configuration.

### General

Dompelbare pompen voorzien van verstopingsgevoelige N-waaiers. Geschikt voor afvalwater met grotere delen zoals rioolwater, regenwater en industriële afvalwater. Materiaal gietijzer.

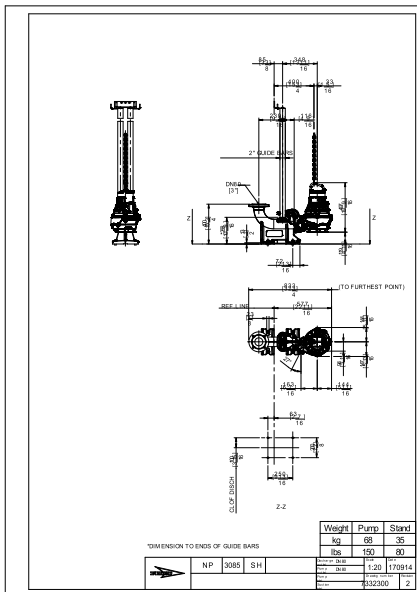
### Impeller

Impeller material	Grey cast iron
Persaansluiting	80 mm
Diameter aanzuigzijde	80 mm
Impeller diameter	116 mm
Aantal bladen	2

### Motor

Motor #	N3085.160 15-09-2AL-W 2.4KW standaard
Stator variant	27
Frequentie	50 Hz
Nominale spanning	190 V
Aantal polen	2
Fasen	3~
Nominaal vermogen	2,4 kW
Toegekende stroom	10 A
Aanloopstroom	64 A
Nominaal toerental	2855 rpm
Vermogensfactor	
1/1 Load	0,90
3/4 Load	0,86
1/2 Load	0,77
Motor efficiency	
1/1 Load	81,0 %
3/4 Load	82,0 %
1/2 Load	81,0 %

### Soort installatie: Semi Permanent, Nat



**POMP DIRECT**  
 T +31 (0)294-457712      F +31 (0)294-457713  
[www.flygtpompen.nl](http://www.flygtpompen.nl)      [info@pompdirect.nl](mailto:info@pompdirect.nl)

Project	Project ID	Created by	Created on 9/27/2018	Last update
---------	------------	------------	-------------------------	-------------

## NP 3085 SH 3~ Adaptive 256

### Karakteristiek

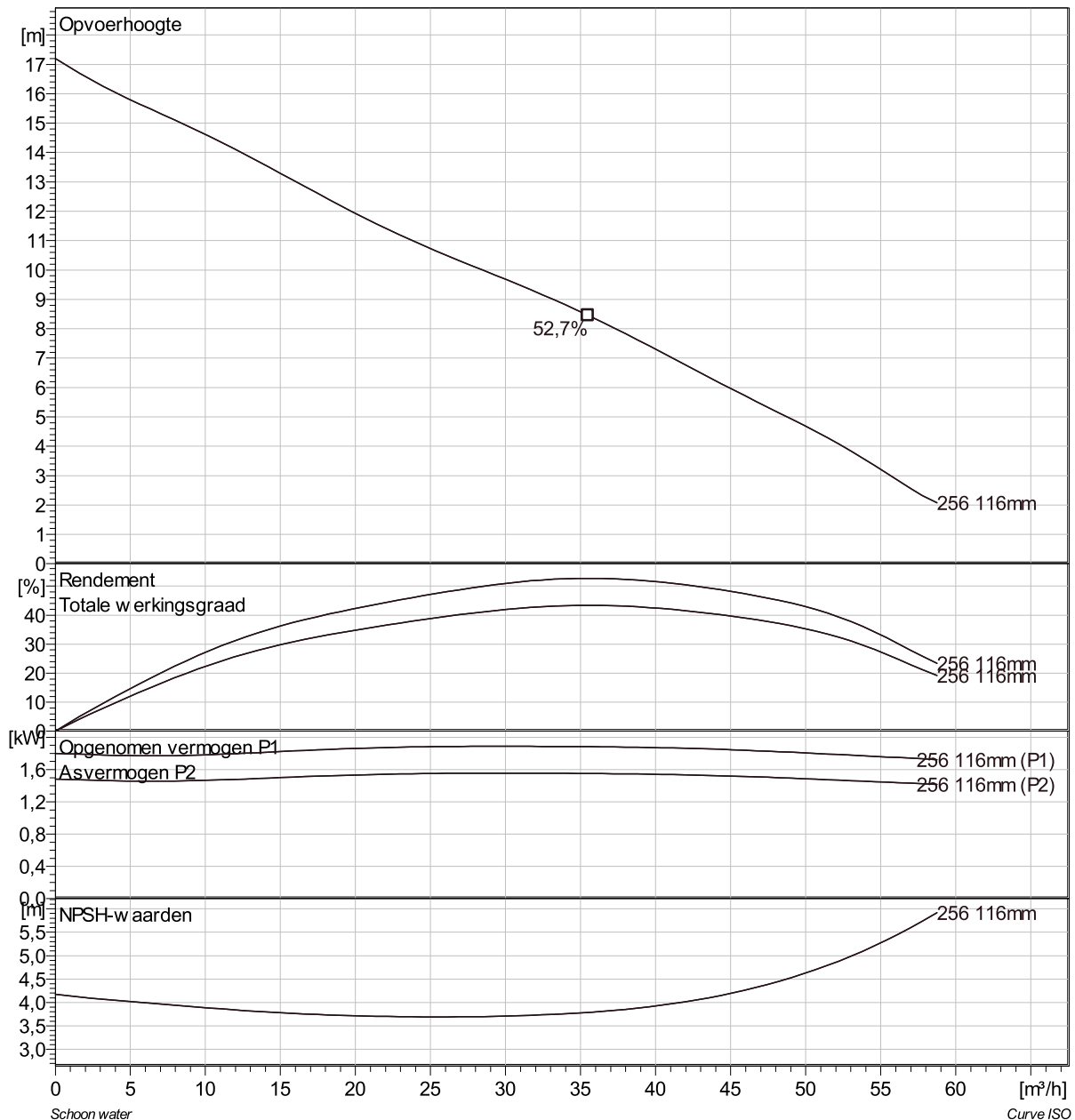
#### Pomp

Persaansluiting	80 mm
Diameter aanzuigzijde	80 mm
Impeller diameter	116 mm
Aantal bladen	2

#### Motor

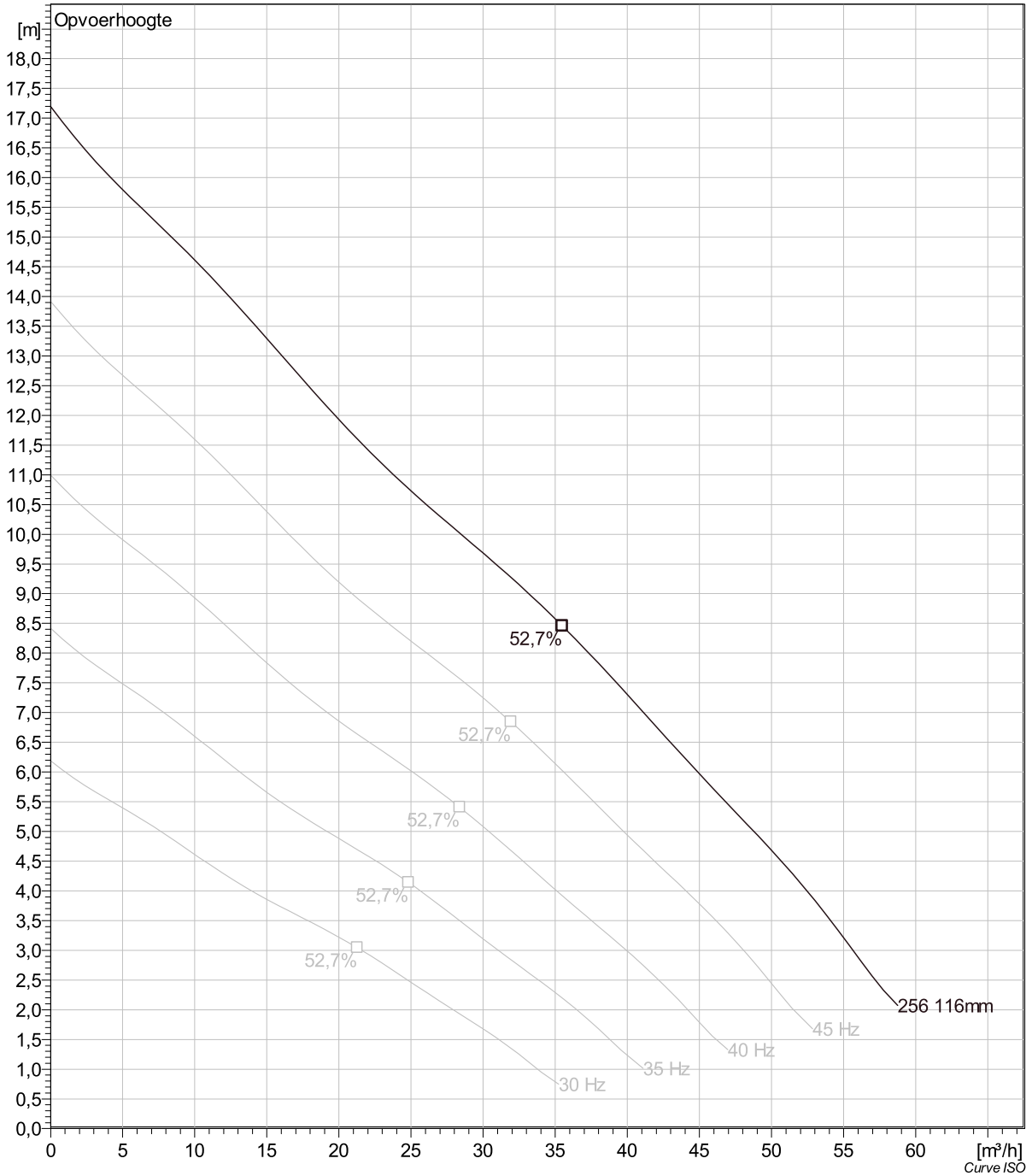
Motor #	N3085.160 15-09-2AL-W 2.4KW
Stator variant	27
Frequentie	50 Hz
Nominale spanning	190 V
Aantal polen	2
Fasen	3~
Nominaal vermogen	2,4 kW
Toegekende stroom	10 A
Aanloopstroom	64 A
Nominaal toerental	2855 rpm

Vermogensfactor	
1/1 Load	0,90
3/4 Load	0,86
1/2 Load	0,77
Motor efficiency	
1/1 Load	81,0 %
3/4 Load	82,0 %
1/2 Load	81,0 %



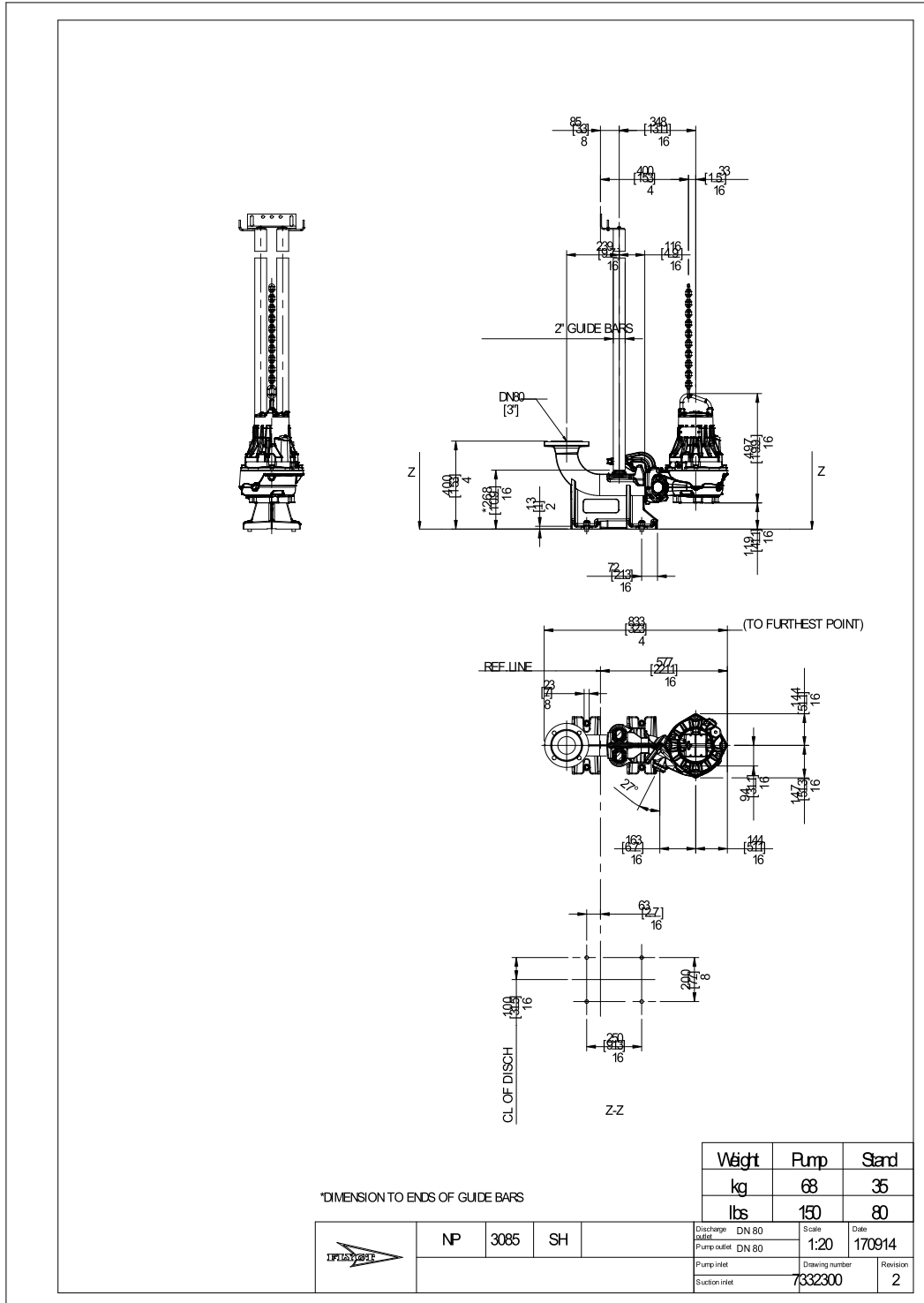
Project	Project ID	Created by	Created on 9/27/2018	Last update
---------	------------	------------	-------------------------	-------------

## NP 3085 SH 3~ Adaptive 256 VFD Analysis



Project	Project ID	Created by	Created on	Last update
			9/27/2018	

## NP 3085 SH 3~ Adaptive 256 Dimensional drawing



Project	Project ID	Created by	Created on 9/27/2018	Last update
---------	------------	------------	-------------------------	-------------