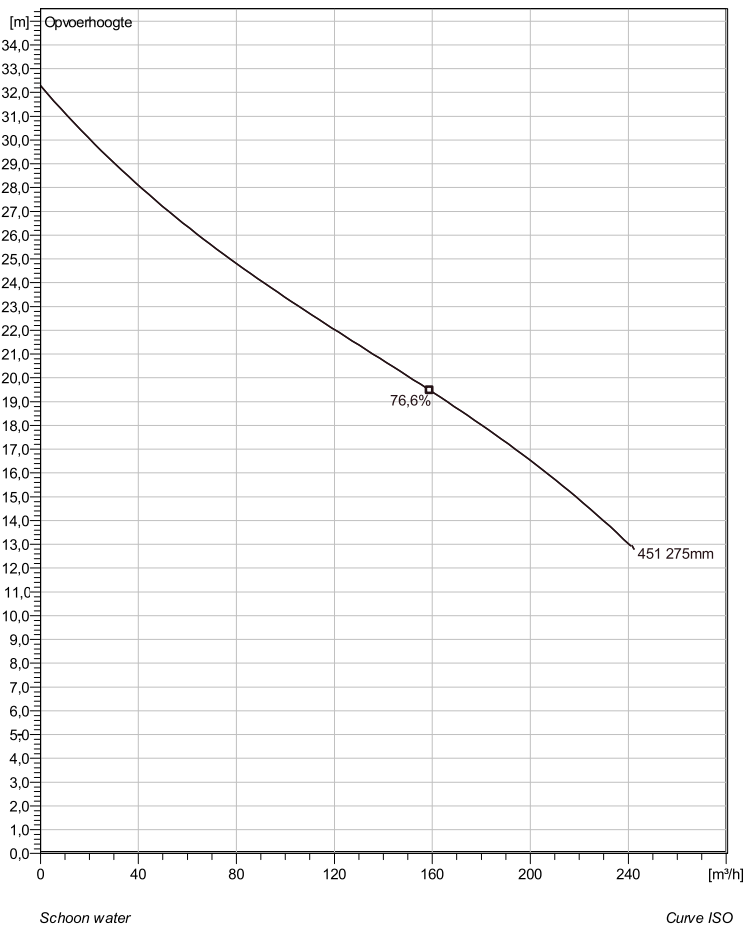


NS 3153 HT 3~ 451 Technische specificaties



Note: Picture might not correspond to the current configuration.

General

Dompelbare pompen voorzien van een verstopingsongevoeilige N-waaiër. Geschikt voor afvalwater met grotere delen zoals rioolwater, regenwater en industriële afvalwater. Materiaal gietijzer.

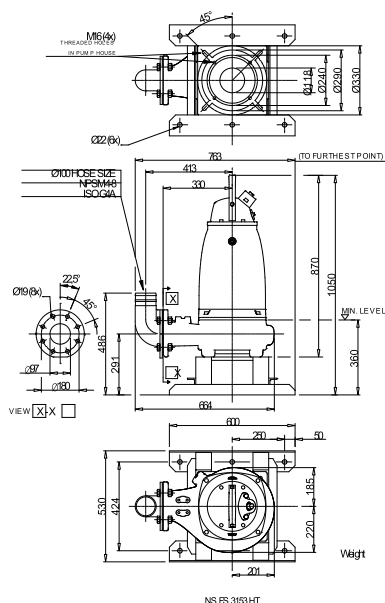
Impeller

| | |
|-----------------------|----------------|
| Impeller materiaal | Grey cast iron |
| Persaansluiting | 100 mm |
| Diameter aanzuigzijde | 100 mm |
| Impeller diameter | 275 mm |
| Aantal bladen | 2 |

Motor

| | |
|--------------------|--|
| Motor # | N3153.181 21-18-4AA-W 13.5KW standaard |
| Stator variant | 2 |
| Frequentie | 50 Hz |
| Nominale spanning | 230 V |
| Aantal polen | 4 |
| Fasen | 3~ |
| Nominaal vermogen | 13,5 kW |
| Toegekende stroom | 47 A |
| Aanloopstroom | 250 A |
| Nominaal toerental | 1455 rpm |
| Vermogensfactor | |
| 1/1 Load | 0,84 |
| 3/4 Load | 0,79 |
| 1/2 Load | 0,68 |
| Motor efficiency | |
| 1/1 Load | 86,5 % |
| 3/4 Load | 88,0 % |
| 1/2 Load | 88,5 % |

Soort installatie: Semi permanent, Nat



| | | | | |
|---------|------------|------------|-------------------------|-------------|
| Project | Project ID | Created by | Created on 10/5/2018 | Last update |
|---------|------------|------------|-------------------------|-------------|

NS 3153 HT 3~ 451

Karakteristiek

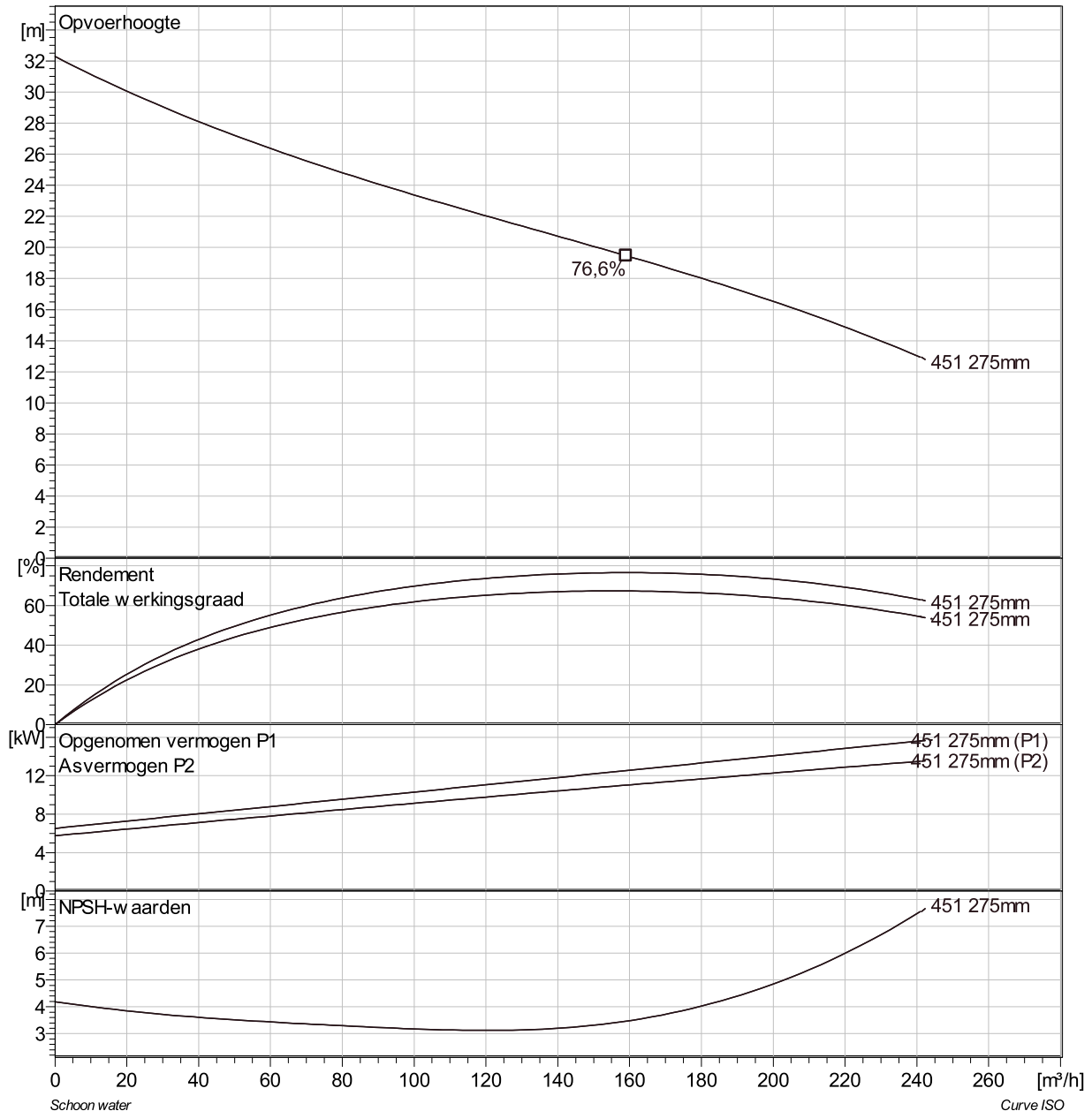
Pomp

| | |
|-----------------------|--------|
| Persaansluiting | 100 mm |
| Diameter aanzuigzijde | 100 mm |
| Impeller diameter | 275 mm |
| Aantal bladen | 2 |

Motor

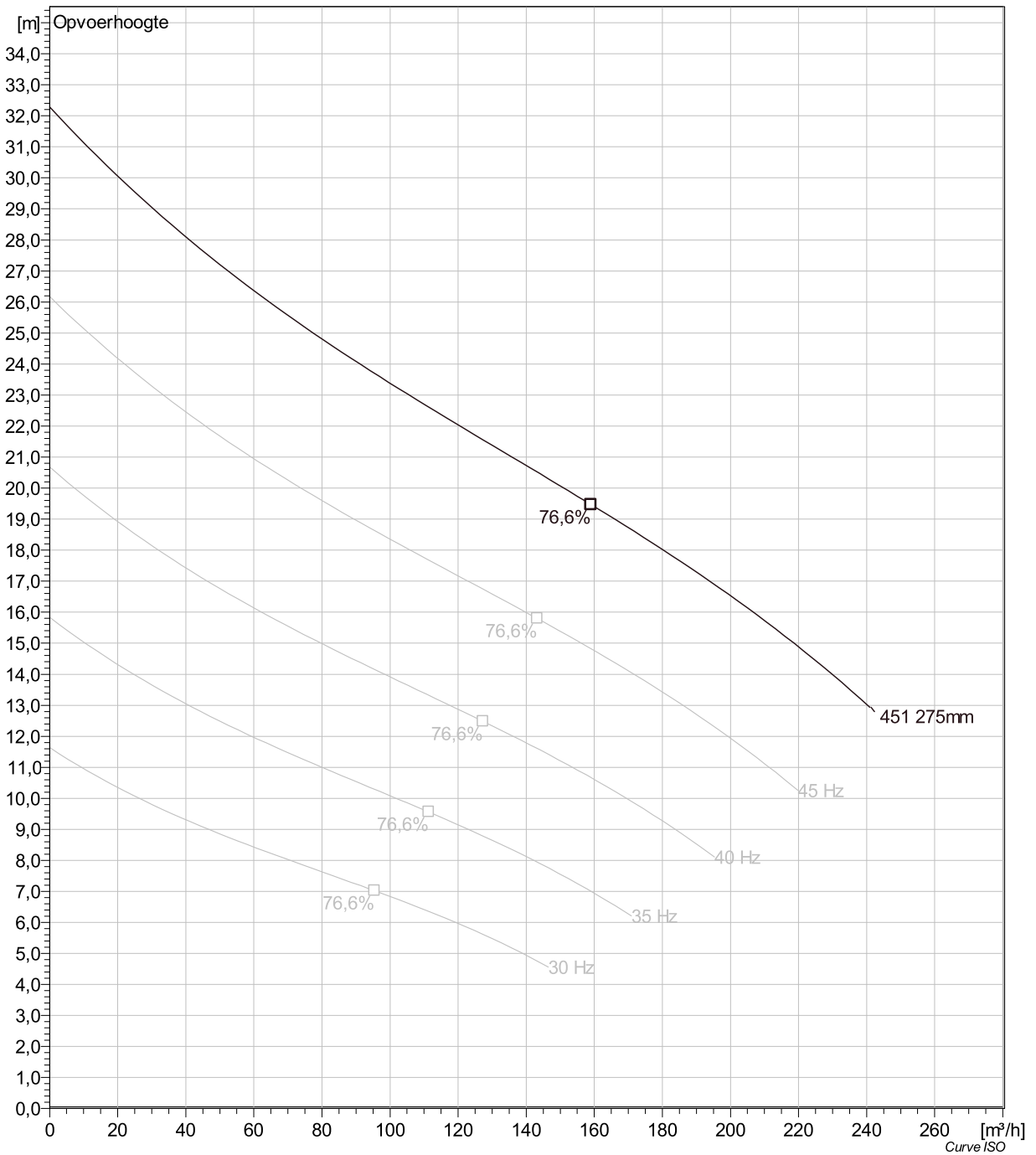
| | |
|--------------------|------------------------------|
| Motor # | N3153.181 21-18-4AA-W 13.5KW |
| Stator variant | 2 |
| Frequentie | 50 Hz |
| Nominale spanning | 230 V |
| Aantal polen | 4 |
| Fasen | 3~ |
| Nominaal vermogen | 13,5 kW |
| Toegekende stroom | 47 A |
| Aanloopstroom | 250 A |
| Nominaal toerental | 1455 rpm |

| | |
|------------------|--------|
| Vermogensfactor | |
| 1/1 Load | 0,84 |
| 3/4 Load | 0,79 |
| 1/2 Load | 0,68 |
| Motor efficiency | |
| 1/1 Load | 86,5 % |
| 3/4 Load | 88,0 % |
| 1/2 Load | 88,5 % |



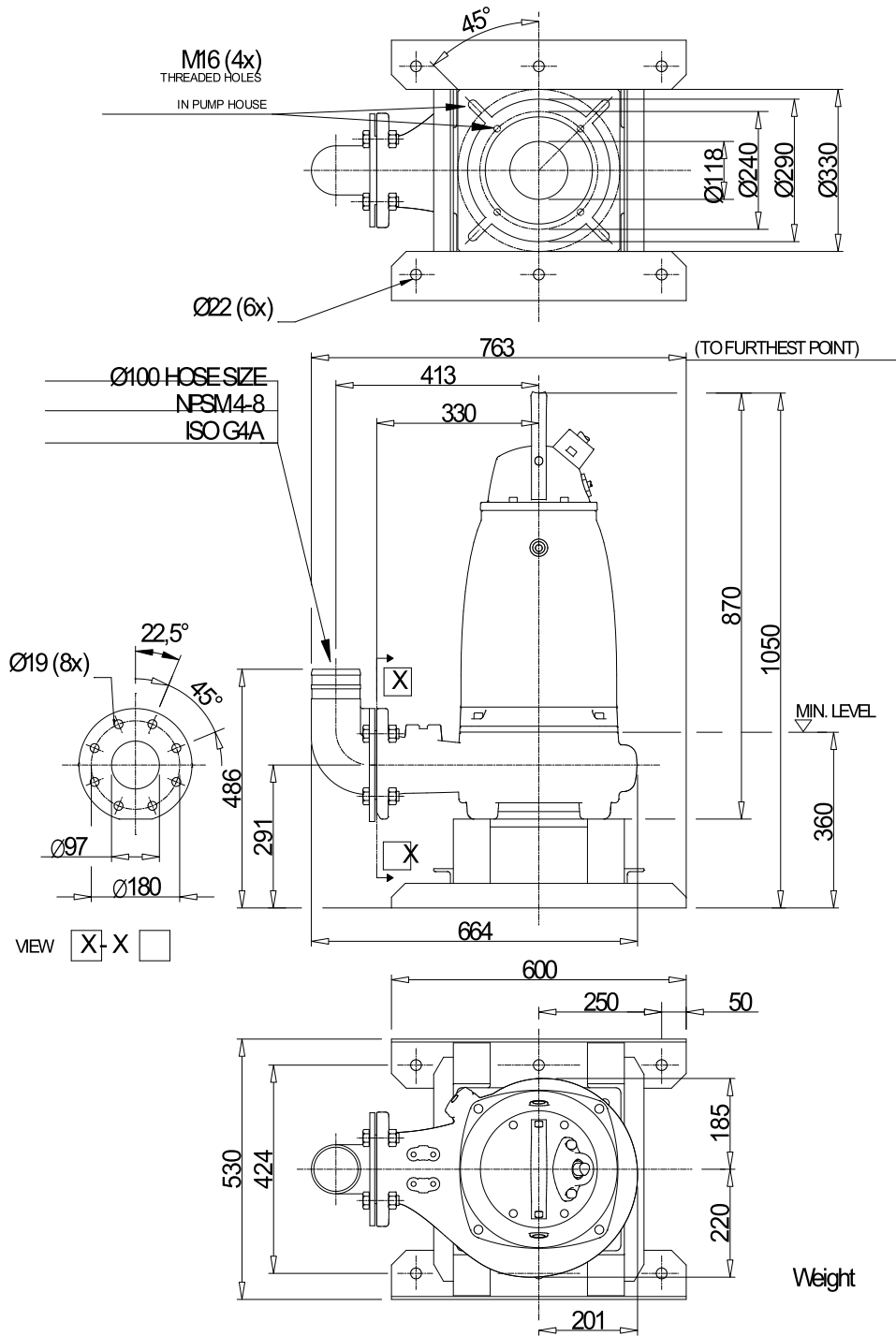
| | | | | |
|---------|------------|------------|-------------------------|-------------|
| Project | Project ID | Created by | Created on 10/5/2018 | Last update |
|---------|------------|------------|-------------------------|-------------|

NS 3153 HT 3~ 451 VFD Analysis



| Project | Project ID | Created by | Created on | Last update |
|---------|------------|------------|------------|-------------|
| | | | 10/5/2018 | |

NS 3153 HT 3~ 451 Dimensional drawing



NS,FS 3153 HT

Weight

| | | | | |
|---------|------------|------------|-------------------------|-------------|
| Project | Project ID | Created by | Created on 10/5/2018 | Last update |
|---------|------------|------------|-------------------------|-------------|