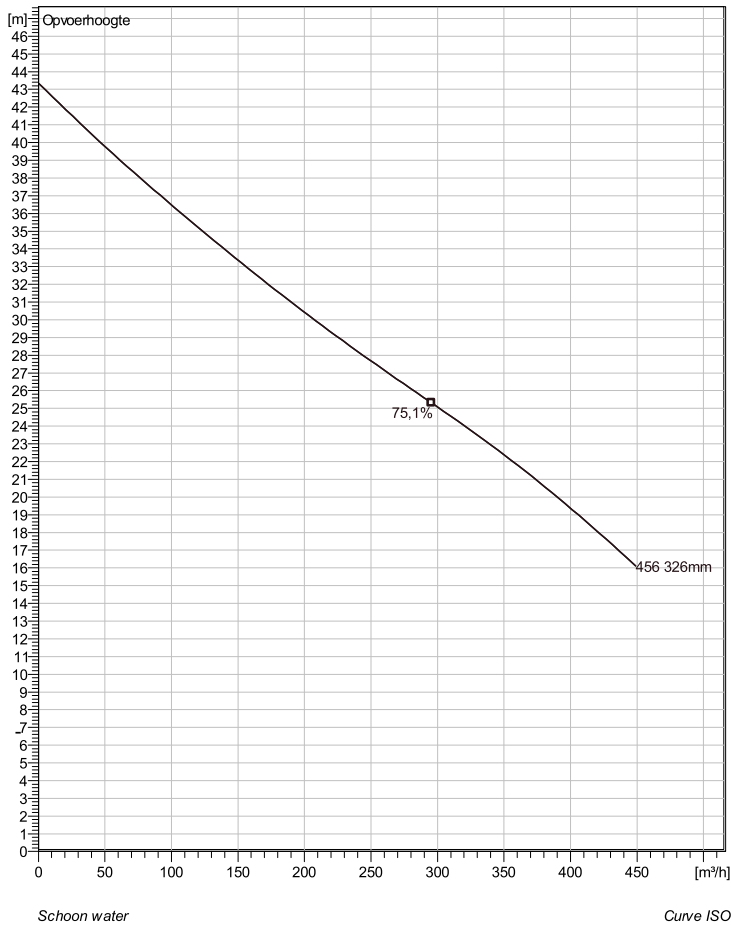


NS 3202 HT 3~ 456 Technische specificaties



Note: Picture might not correspond to the current configuration.

General

Dompelbare pompen voorzien van een verstoppingsongevrije N-waaiër. Geschikt voor afvalwater met grotere delen zoals rioolwater, regenwater en industriële afvalwater. Materiaal gietijzer.

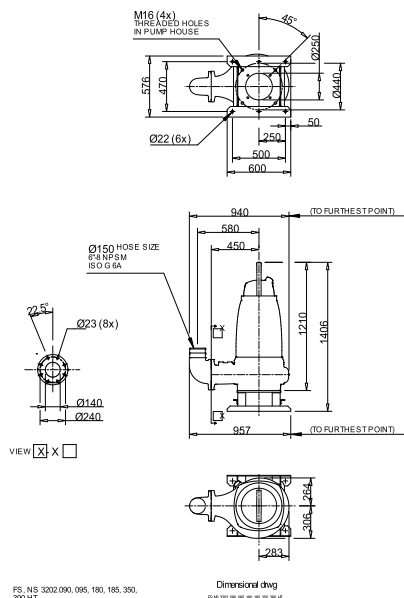
Impeller

Impeller material	Grey cast iron
Persaansluiting	150 mm
Diameter aanzuigzijde	200 mm
Impeller diameter	326 mm
Aantal bladen	2

Motor

Motor #	N3202.180 30-24-4AA-W 37KW standaard
Stator variant	1
Frequentie	50 Hz
Nominale spanning	380 V
Aantal polen	4
Fasen	3~
Nominaal vermogen	37 kW
Toegekende stroom	68 A
Aanloopstroom	395 A
Nominaal toerental	1470 rpm
Vermogensfactor	
1/1 Load	0,91
3/4 Load	0,89
1/2 Load	0,83
Motor efficiency	
1/1 Load	90,5 %
3/4 Load	92,0 %
1/2 Load	92,5 %

Soort installatie: Semi permanent, Nat



Project	Project ID	Created by	Created on 10/5/2018	Last update
---------	------------	------------	-------------------------	-------------

NS 3202 HT 3~ 456

Karakteristiek

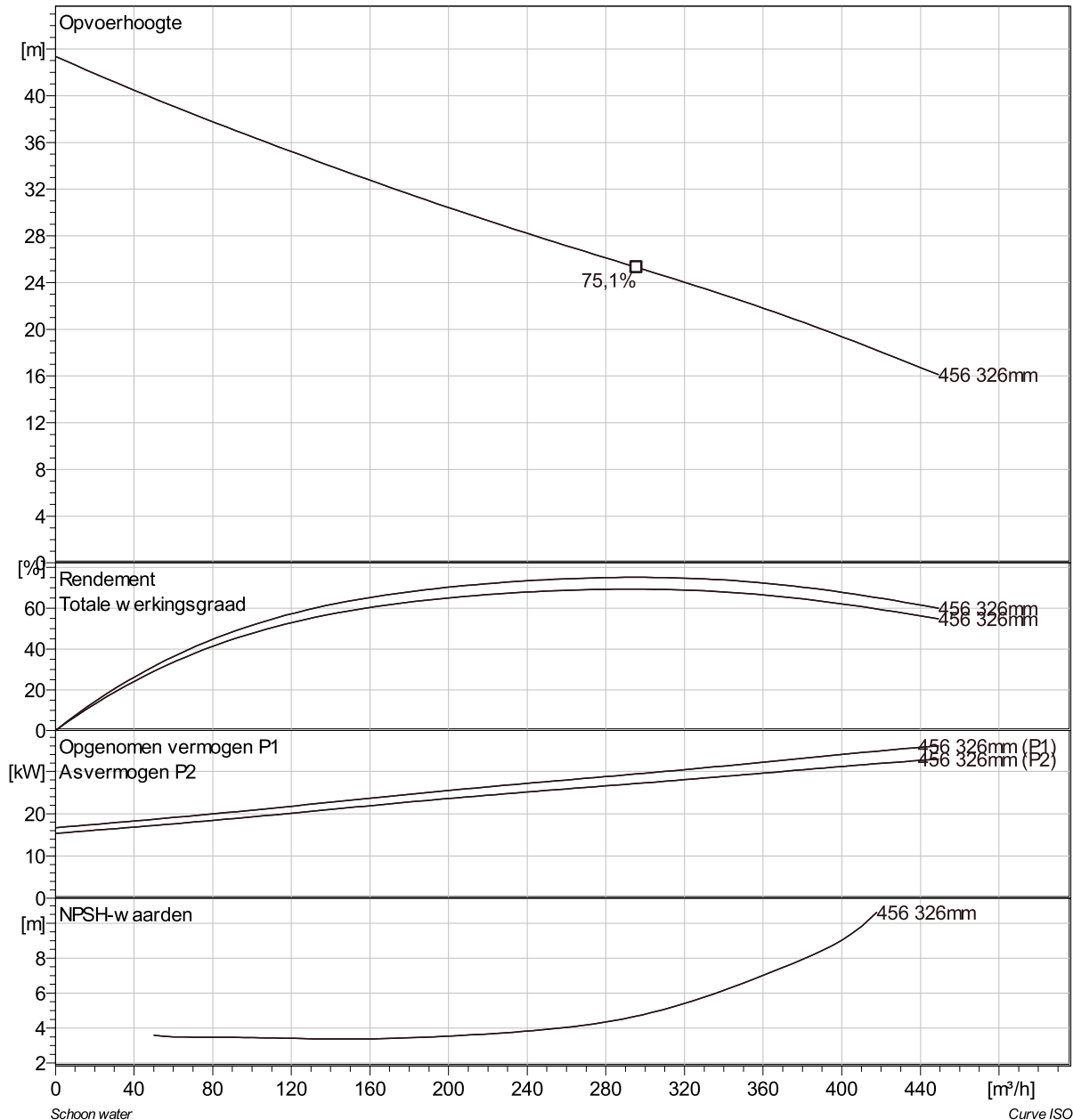
Pomp

Persaansluiting	150 mm
Diameter aanzuigzijde	200 mm
Impeller diameter	326 mm
Aantal bladen	2

Motor

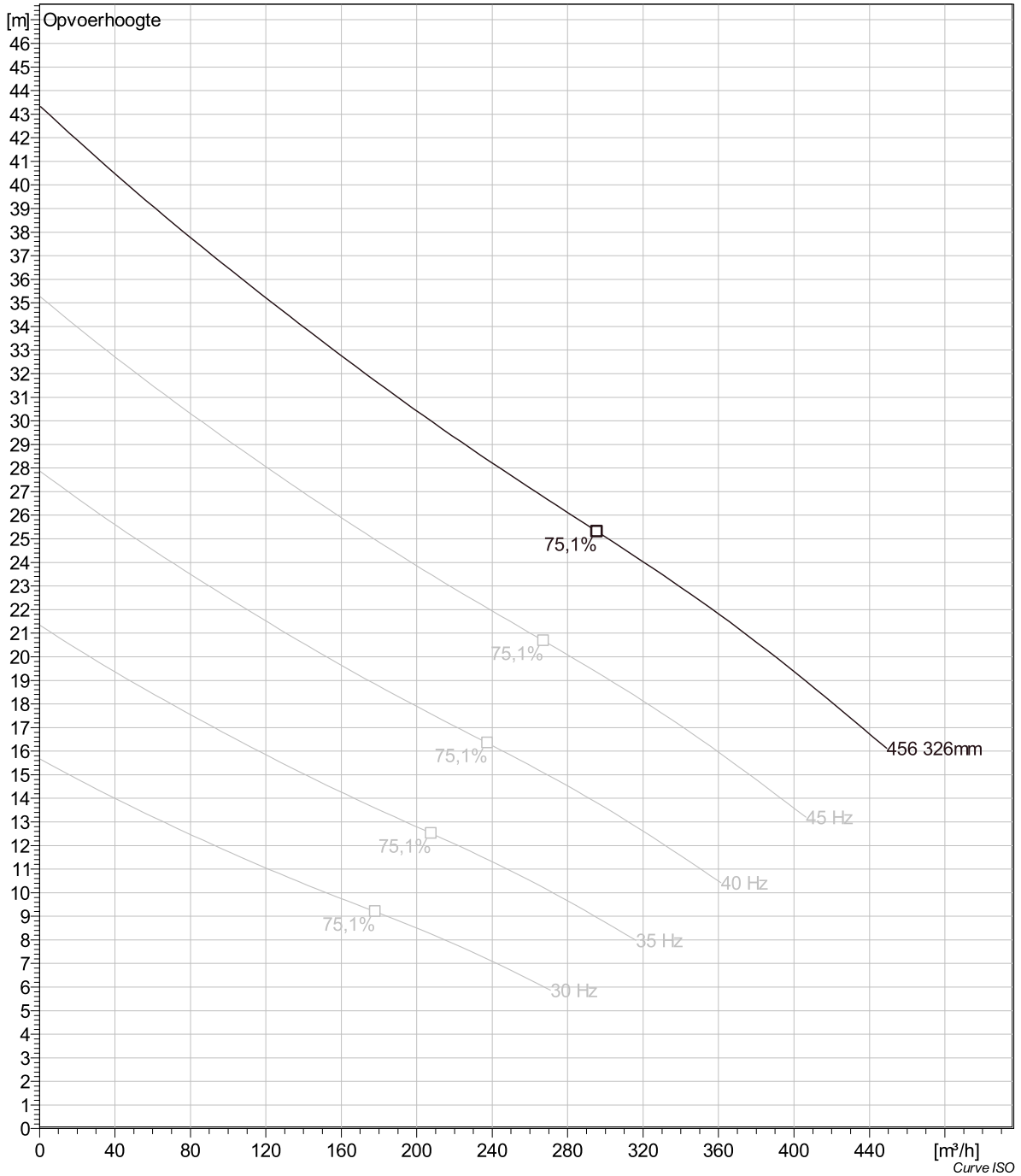
Motor #	N3202.180 30-24-4AA-W 37KW
Stator variant	1
Frequentie	50 Hz
Nominale spanning	380 V
Aantal polen	4
Fasen	3~
Nominaal vermogen	37 kW
Toegekende stroom	68 A
Aanloopstroom	395 A
Nominaal toerental	1470 rpm

Vermogensfactor	
1/1 Load	0,91
3/4 Load	0,89
1/2 Load	0,83
Motor efficiency	
1/1 Load	90,5 %
3/4 Load	92,0 %
1/2 Load	92,5 %



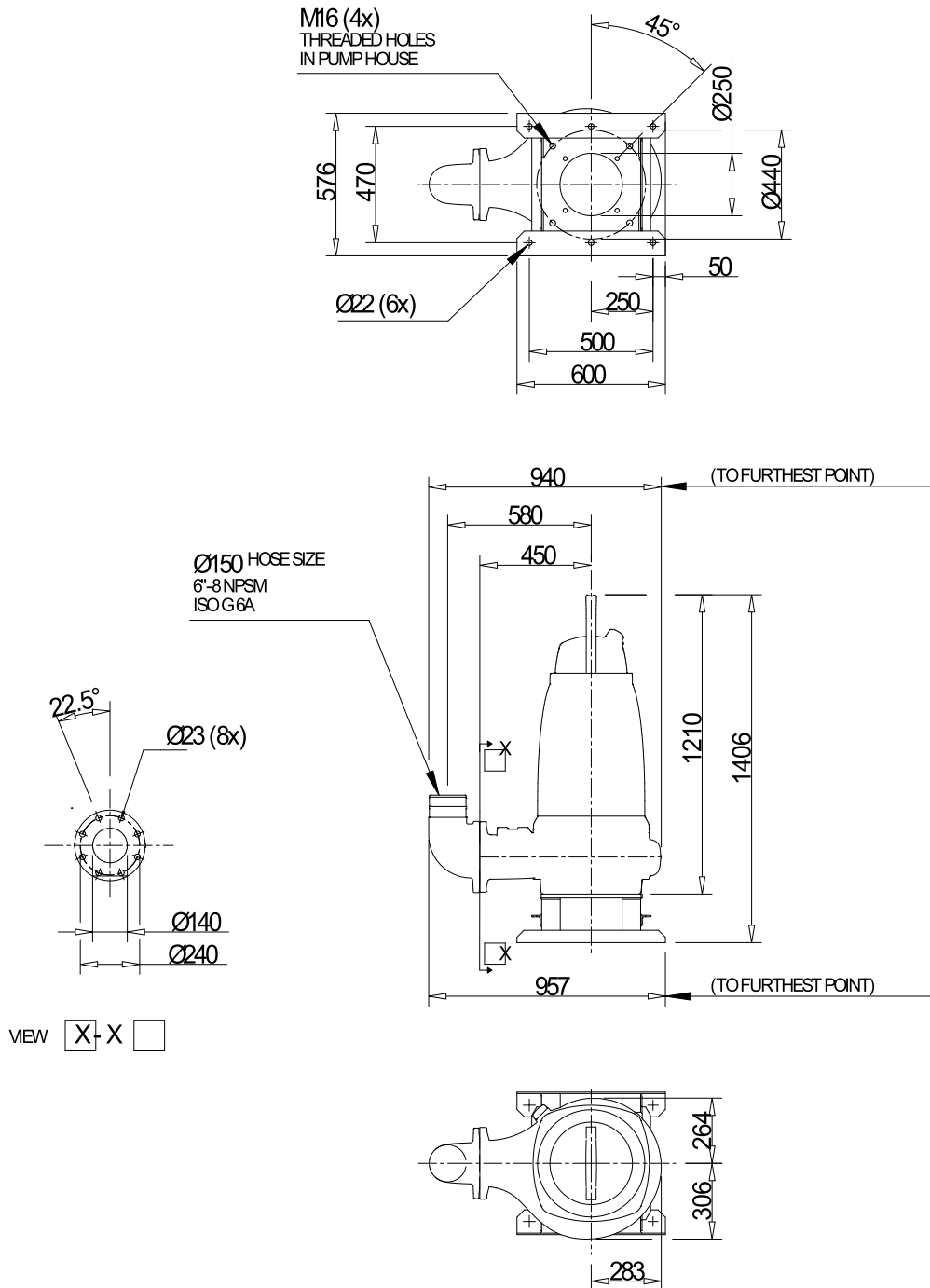
Project	Project ID	Created by	Created on 10/5/2018	Last update
---------	------------	------------	-------------------------	-------------

NS 3202 HT 3~ 456 VFD Analysis



Project	Project ID	Created by	Created on	Last update
			10/5/2018	

NS 3202 HT 3~ 456 Dimensional drawing



FS, NS 3202.090, 095, 180, 185, 350, 390 HT

Dimensional drwg

FSNS3202.090,095,180,185,350,390 HT

Project	Project ID	Created by	Created on	Last update
			10/5/2018	