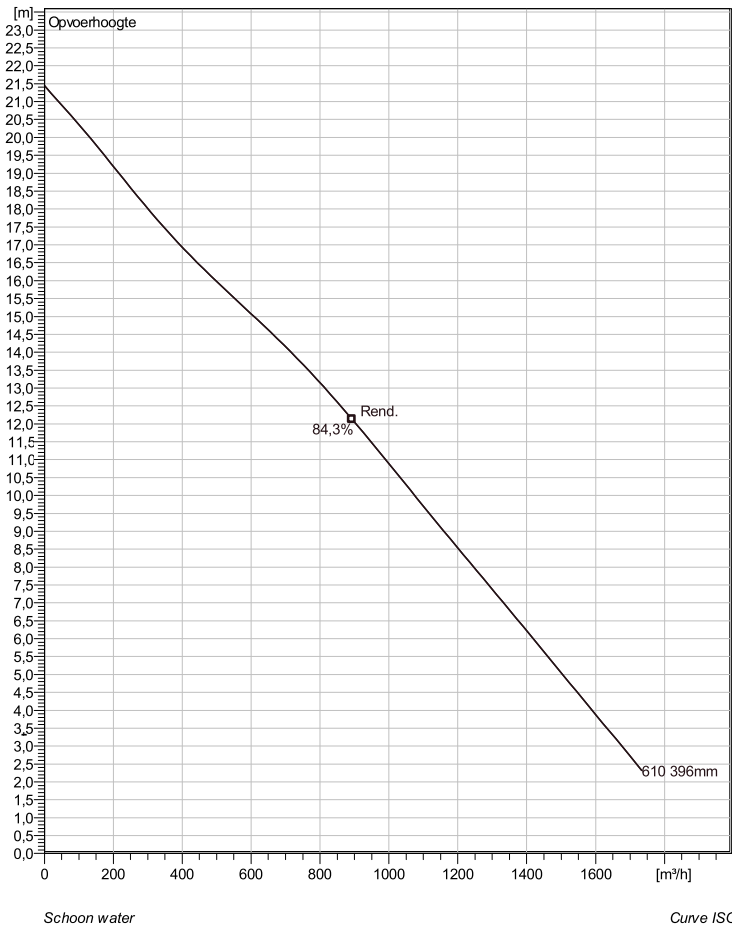


NS 3202 LT 3~ 610 Technische specificaties



Note: Picture might not correspond to the current configuration.

General

Dompelbare pompen voorzien van een verstopingsongevoeilige N-waaiër. Geschikt voor afvalwater met grotere delen zoals rioolwater, regenwater en industriële afvalwater. Materiaal gietijzer.

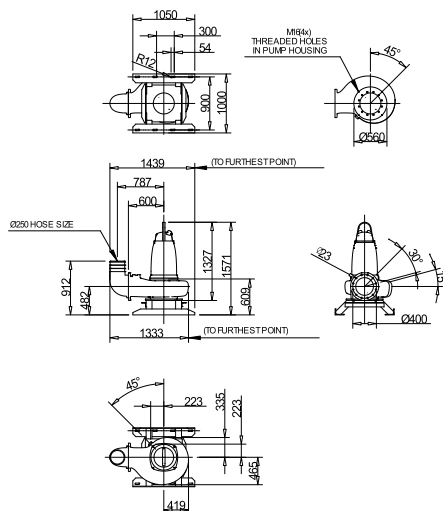
Impeller

Impeller material	Grey cast iron
Persaansluiting	300 mm
Diameter aanzuigzijde	300 mm
Impeller diameter	396 mm
Aantal bladen	2
Throughlet diameter	92 mm

Motor

Motor #	N3202.180 30-29-6AA-W 37KW standaard
Stator variant	1
Frequentie	50 Hz
Nominale spanning	380 V
Aantal polen	6
Fasen	3~
Nominaal vermogen	37 kW
Toegekende stroom	72 A
Aanloopstroom	385 A
Nominaal toerental	970 rpm
Vermogensfactor	
1/1 Load	0,87
3/4 Load	0,84
1/2 Load	0,77
Motor efficiency	
1/1 Load	89,5 %
3/4 Load	90,5 %
1/2 Load	91,0 %

Soort installatie: Semi permanent, Nat



NS 3202.090.095.180.185.350.390.660.670 LT

Dimensional dwg

Weight (kg)	
Total incl. stand	90

Project	Project ID	Created by	Created on 10/5/2018	Last update
---------	------------	------------	-------------------------	-------------

NS 3202 LT 3~ 610

Karakteristiek

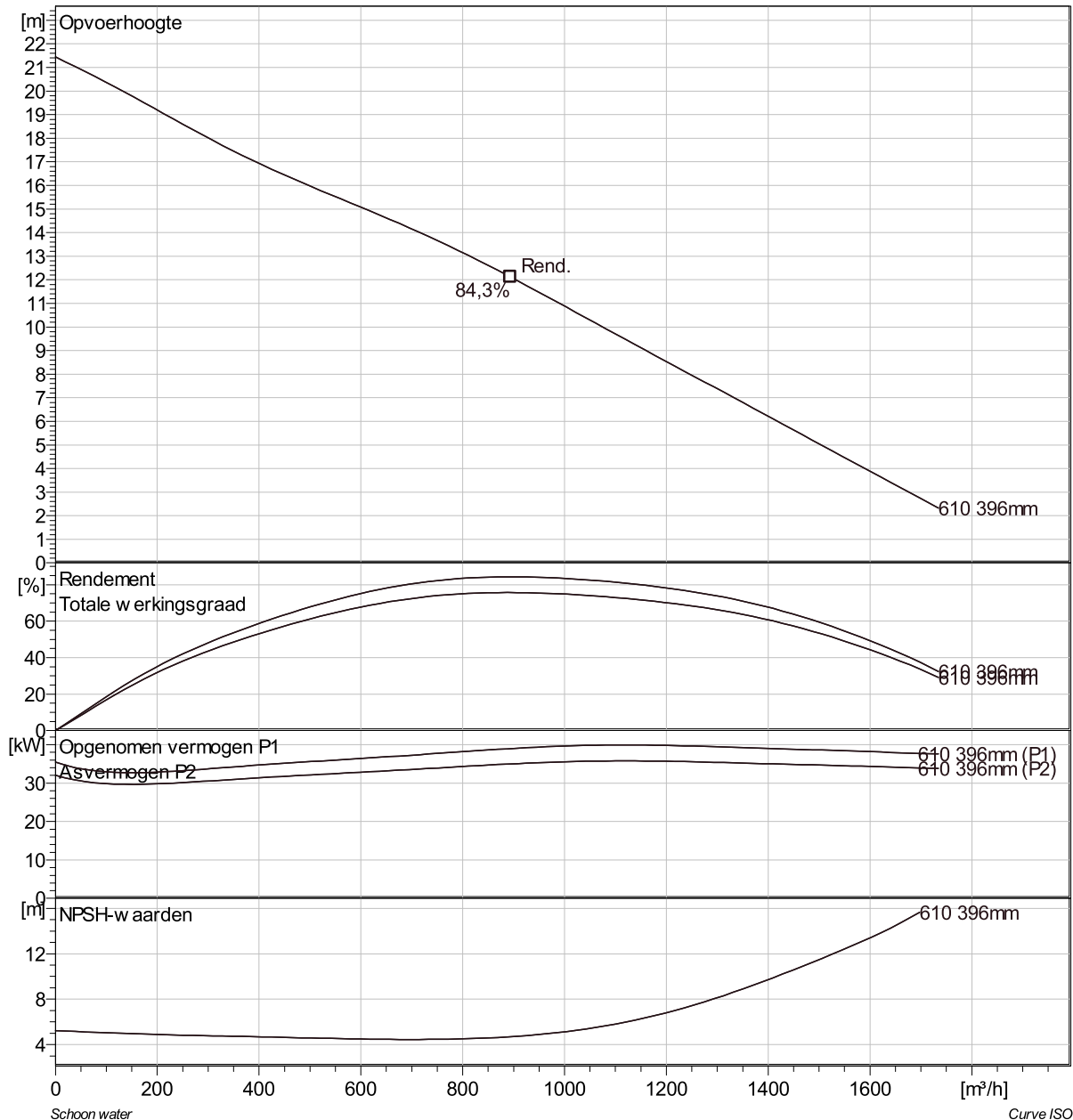
Pomp

Persaansluiting	300 mm
Diameter aanzuigzijde	300 mm
Impeller diameter	396 mm
Aantal bladen	2
Throughlet diameter	92 mm

Motor

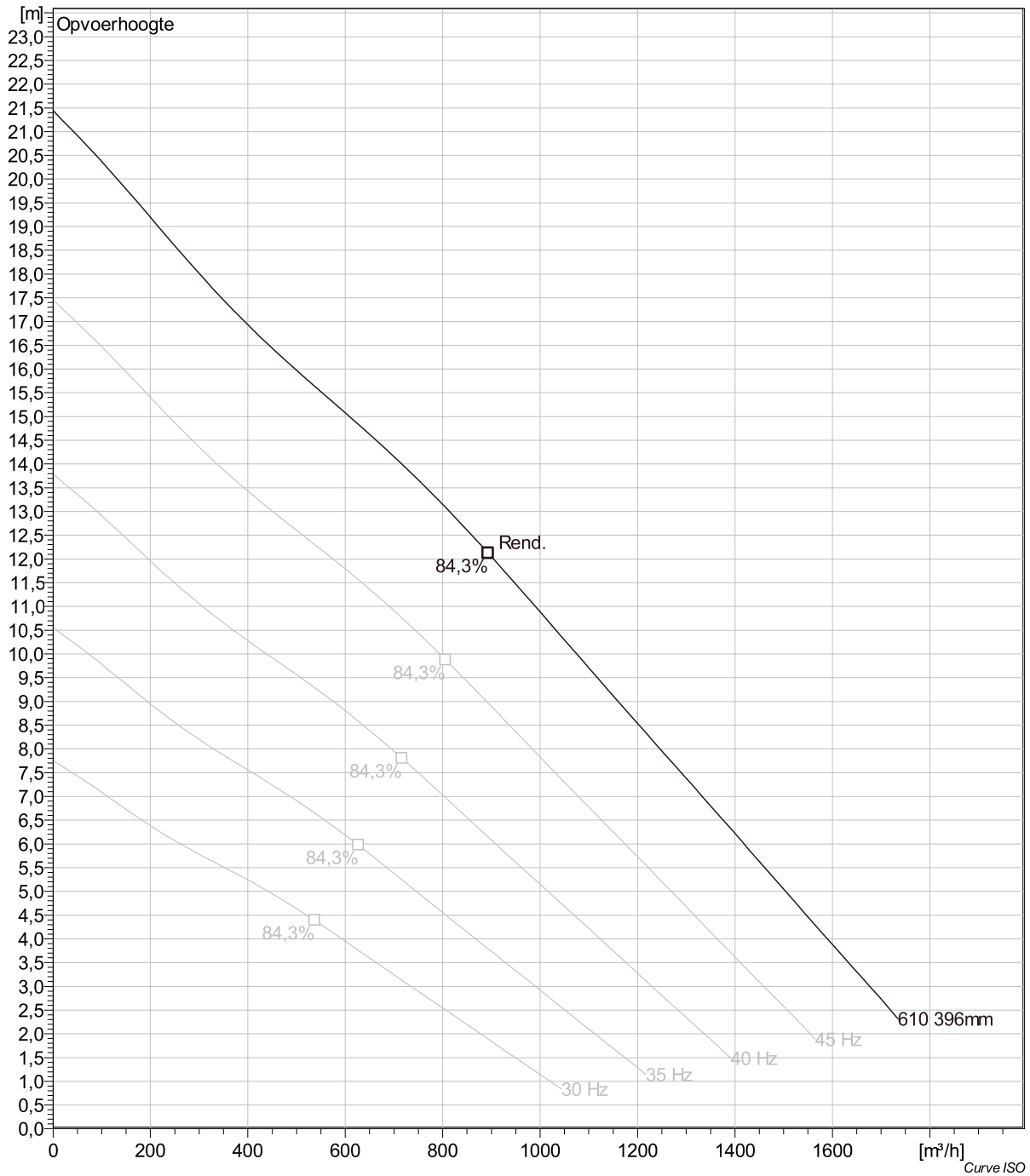
Motor #	N3202.180 30-29-6AA-W 37KW
Stator variant	1
Frequentie	50 Hz
Nominale spanning	380 V
Aantal polen	6
Fasen	3~
Nominaal vermogen	37 kW
Toegekende stroom	72 A
Aanloopstroom	385 A
Nominaal toerental	970 rpm

Vermogensfactor	
1/1 Load	0,87
3/4 Load	0,84
1/2 Load	0,77
Motor efficiency	
1/1 Load	89,5 %
3/4 Load	90,5 %
1/2 Load	91,0 %



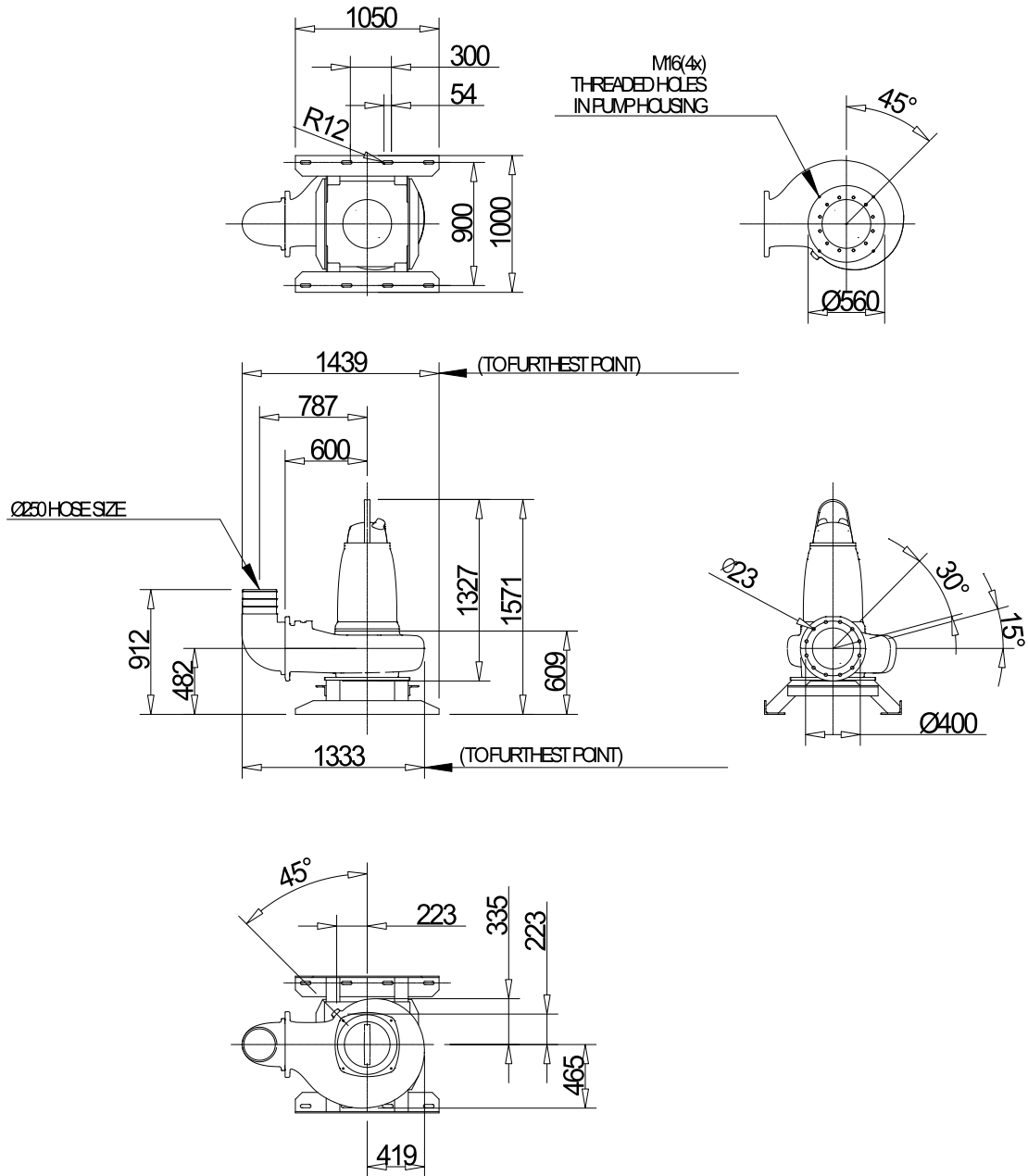
Project	Project ID	Created by	Created on 10/5/2018	Last update
---------	------------	------------	-------------------------	-------------

NS 3202 LT 3~ 610 VFD Analysis



Project	Project ID	Created by	Created on	Last update
			10/5/2018	

NS 3202 LT 3~ 610 Dimensional drawing



NS 3202.080,095,180,185,350,390,660,670 LT

Weight (kg)
Total incl. stand
900

Dimensional dwg

NS 3202.090,095,180,185,350,390,660,670 LT

Project	Project ID	Created by	Created on 10/5/2018	Last update
---------	------------	------------	-------------------------	-------------