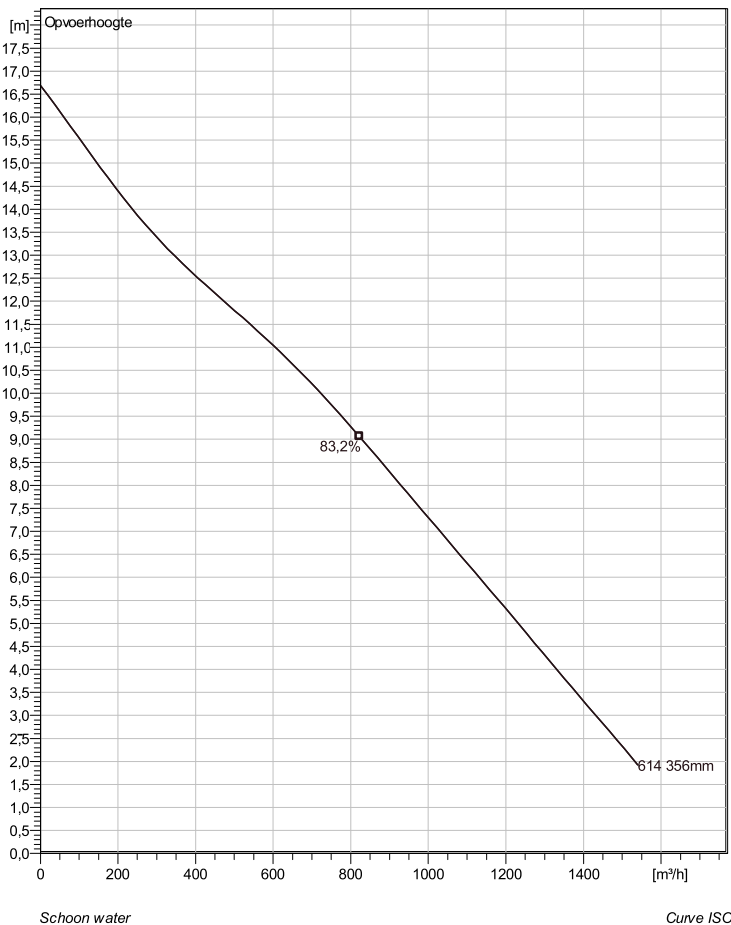


## NS 3202 LT 3~ 614 Technische specificaties



Note: Picture might not correspond to the current configuration.

### General

Dompelbare pompen voorzien van een verstoppingsongevoeilige N-waaiër. Geschikt voor afvalwater met grotere delen zoals rioolwater, regenwater en industriële afvalwater. Materiaal gietijzer.

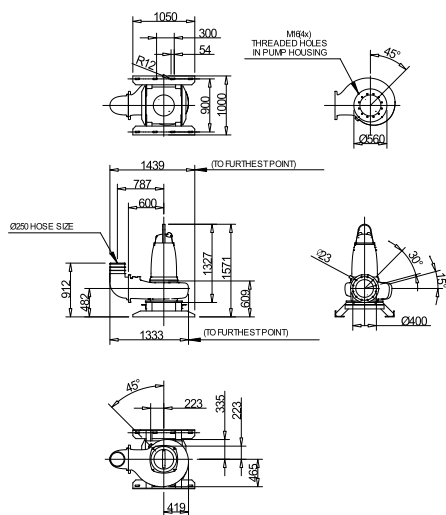
### Impeller

Impeller material	Grey cast iron
Persaansluiting	300 mm
Diameter aanzuigzijde	300 mm
Impeller diameter	356 mm
Aantal bladen	2
Throughlet diameter	92 mm

### Motor

Motor #	N3202.180 30-23-6AA-W 30KW standaard
Stator variant	1
Frequentie	50 Hz
Nominale spanning	380 V
Aantal polen	6
Fasen	3~
Nominaal vermogen	30 kW
Toegekende stroom	59 A
Aanloopstroom	300 A
Nominaal toerental	970 rpm
Vermogensfactor	
1/1 Load	0,87
3/4 Load	0,84
1/2 Load	0,76
Motor efficiency	
1/1 Load	88,5 %
3/4 Load	89,5 %
1/2 Load	90,0 %

### Soort installatie: Semi permanent, Nat



NS 3202,090,095,180,185,350,390,660,670 LT

Dimensional dwg

NS 3202,090,095,180,185,350,390,660,670 LT

Weight (kg)	
Total incl. stand	90

Project	Project ID	Created by	Created on 10/5/2018	Last update
---------	------------	------------	-------------------------	-------------

## NS 3202 LT 3~ 614

### Karakteristiek

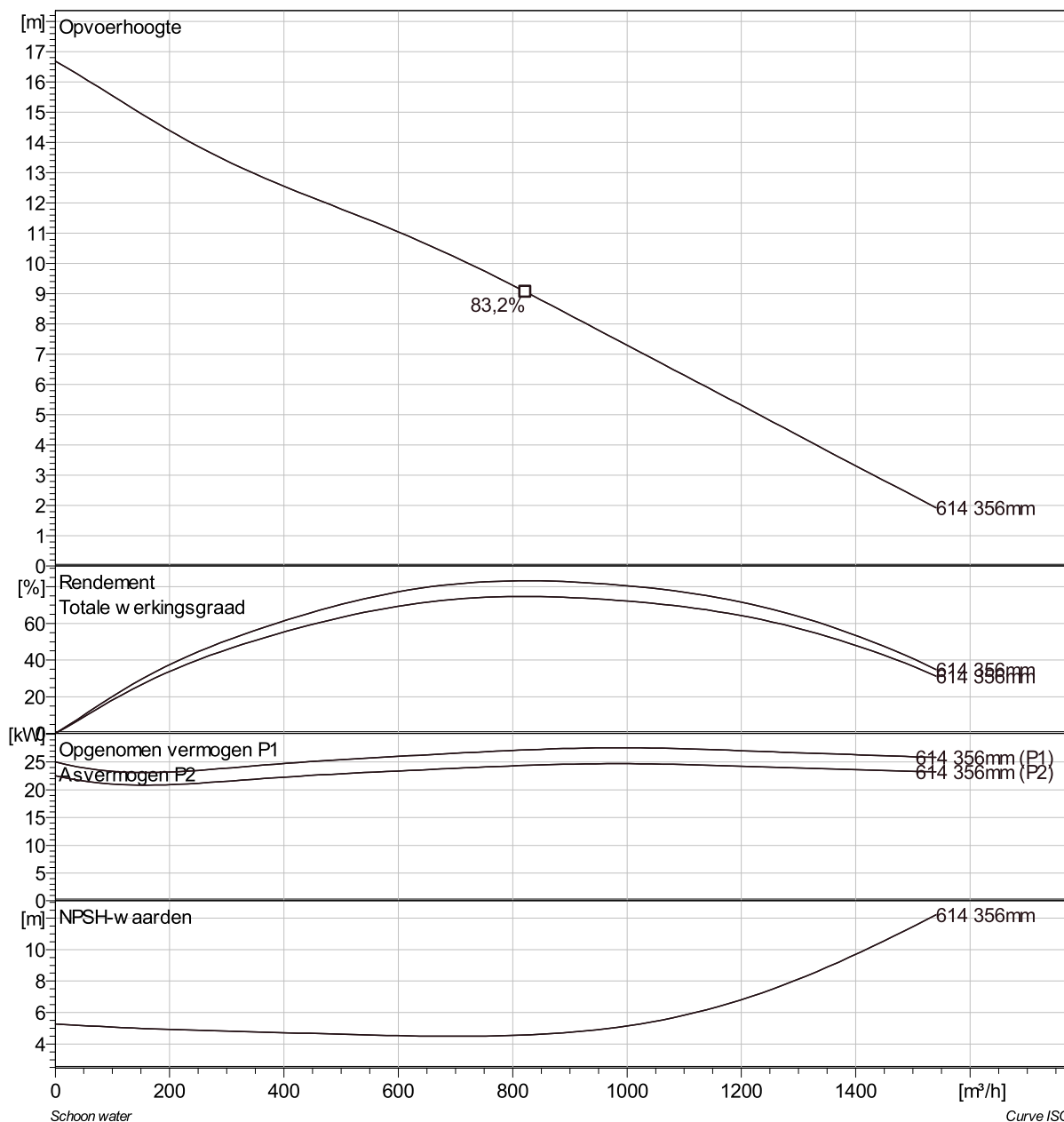
#### Pomp

Persaansluiting	300 mm
Diameter aanzuigzijde	300 mm
Impeller diameter	356 mm
Aantal bladen	2
Throughlet diameter	92 mm

#### Motor

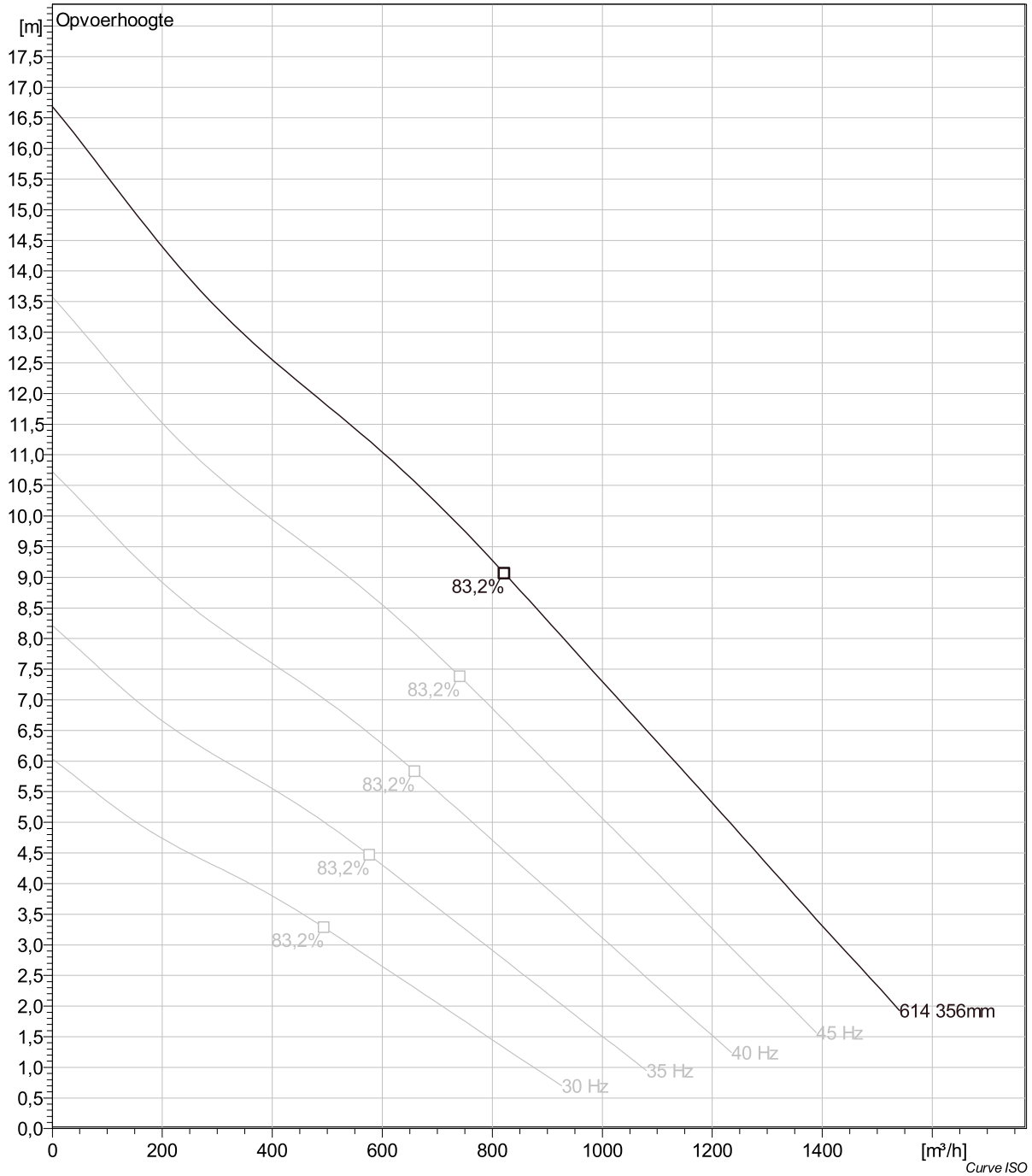
Motor #	N3202.180 30-23-6AA-W 30KW
Stator variant	1
Frequentie	50 Hz
Nominale spanning	380 V
Aantal polen	6
Fasen	3~
Nominaal vermogen	30 kW
Toegekende stroom	59 A
Aanloopstroom	300 A
Nominaal toerental	970 rpm

Vermogensfactor	
1/1 Load	0,87
3/4 Load	0,84
1/2 Load	0,76
Motor efficiency	
1/1 Load	88,5 %
3/4 Load	89,5 %
1/2 Load	90,0 %



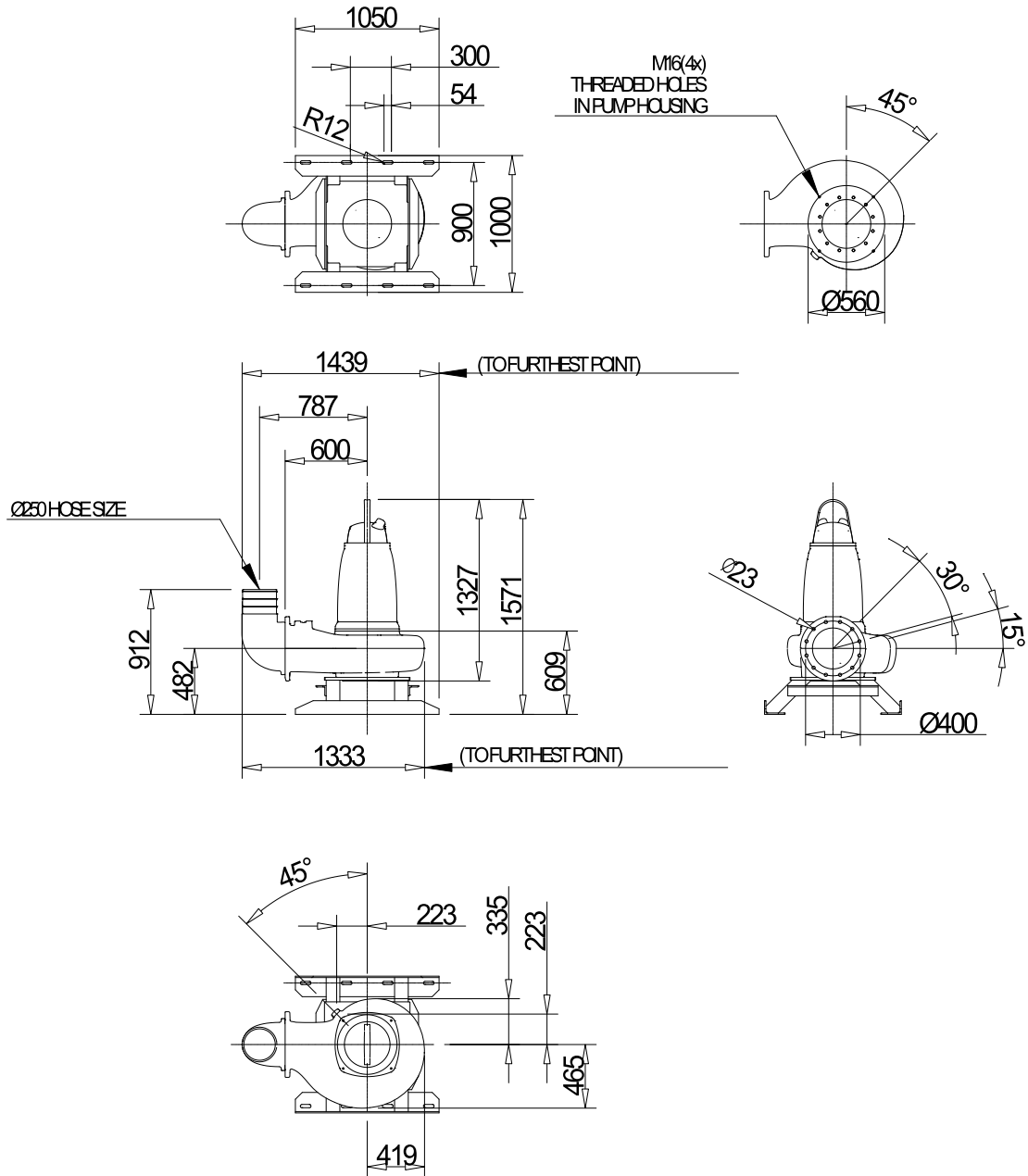
Project	Project ID	Created by	Created on 10/5/2018	Last update
---------	------------	------------	-------------------------	-------------

## NS 3202 LT 3~ 614 VFD Analysis



Project	Project ID	Created by	Created on	Last update
			10/5/2018	

## NS 3202 LT 3~ 614 Dimensional drawing



NS 3202,080,095,180,185,350,390,660,670 LT

Weight (kg)
Total incl. stand
900

Dimensional dwg

NS 3202,090,095,180,185,350,390,660,670 LT

Project	Project ID	Created by	Created on 10/5/2018	Last update
---------	------------	------------	-------------------------	-------------