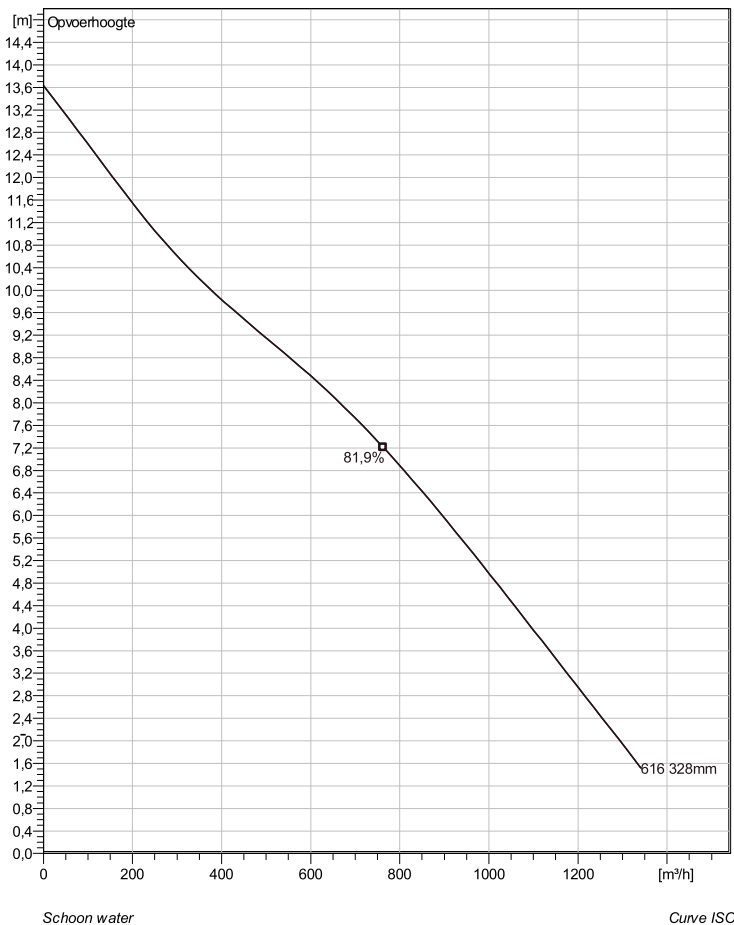


NS 3202 LT 3~ 616 Technische specificaties



Note: Picture might not correspond to the current configuration.

General

Dompelbare pompen voorzien van een verstoppingsongevoeilige N-waaiër. Geschikt voor afvalwater met grotere delen zoals rioolwater, regenwater en industriële afvalwater. Materiaal gietijzer.

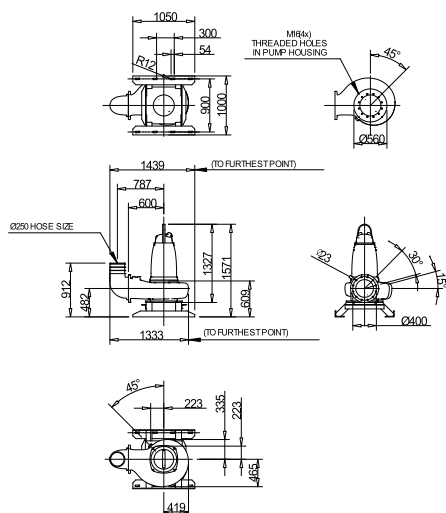
Impeller

Impeller material	Grey cast iron
Persaansluiting	300 mm
Diameter aanzuigzijde	300 mm
Impeller diameter	328 mm
Aantal bladen	2
Throughlet diameter	92 mm

Motor

Motor #	N3202.180 30-18-6AA-W 22KW standaard
Stator variant	1
Frequentie	50 Hz
Nominale spanning	380 V
Aantal polen	6
Fasen	3~
Nominaal vermogen	22 kW
Toegekende stroom	44 A
Aanloopstroom	225 A
Nominaal toerental	970 rpm
Vermogensfactor	
1/1 Load	0,87
3/4 Load	0,84
1/2 Load	0,76
Motor efficiency	
1/1 Load	88,0 %
3/4 Load	89,5 %
1/2 Load	89,5 %

Soort installatie: Semi permanent, Nat



NS 3202.090.095.180.185.350.390.660.670 LT

Dimensional dwg

NS 3202.090.095.180.185.350.390.660.670 LT

Weight (kg)	
Total incl. stand	90

Project	Project ID	Created by	Created on 10/5/2018	Last update
---------	------------	------------	-------------------------	-------------

NS 3202 LT 3~ 616

Karakteristiek

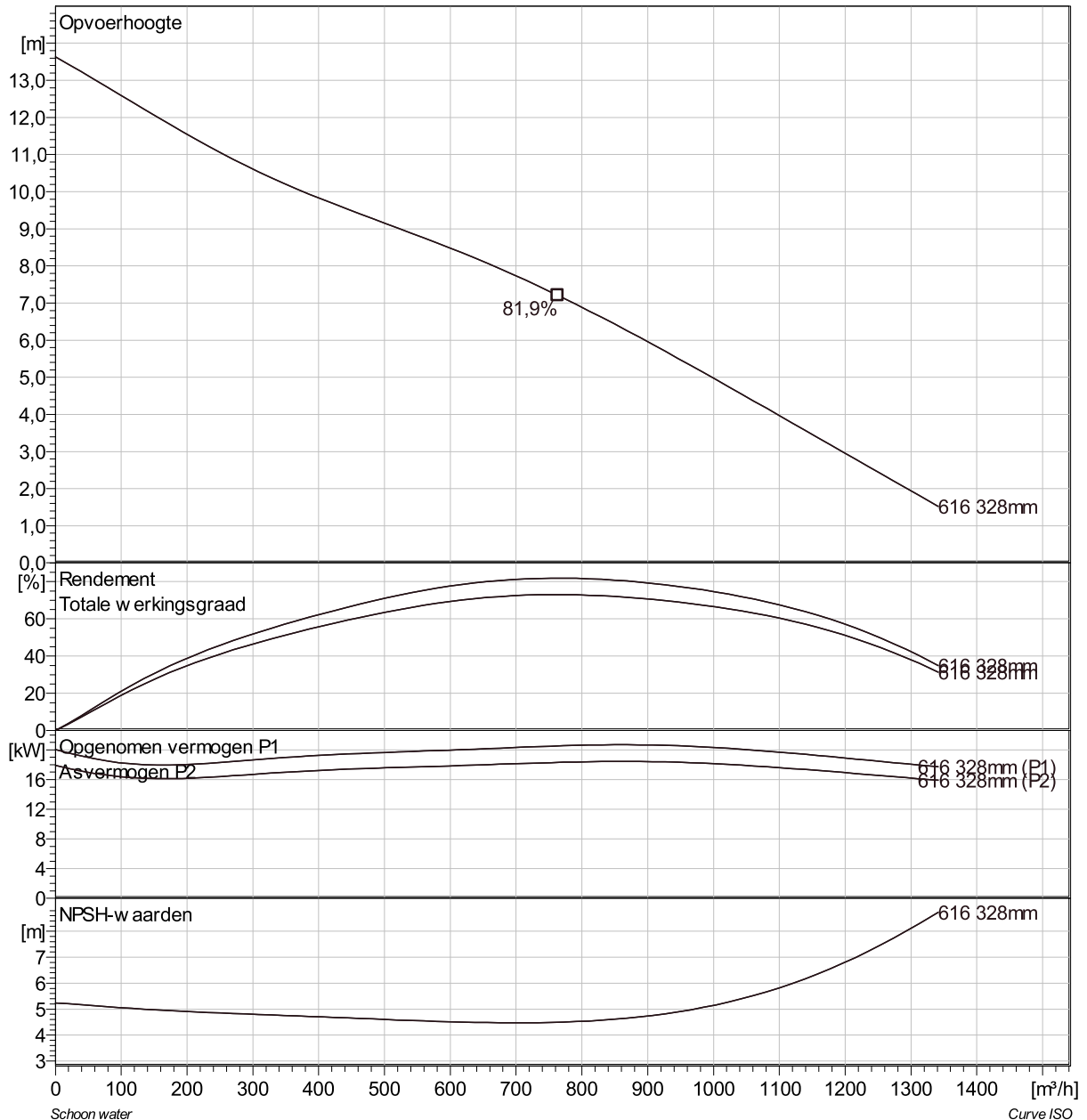
Pomp

Persaansluiting	300 mm
Diameter aanzuigzijde	300 mm
Impeller diameter	328 mm
Aantal bladen	2
Throughlet diameter	92 mm

Motor

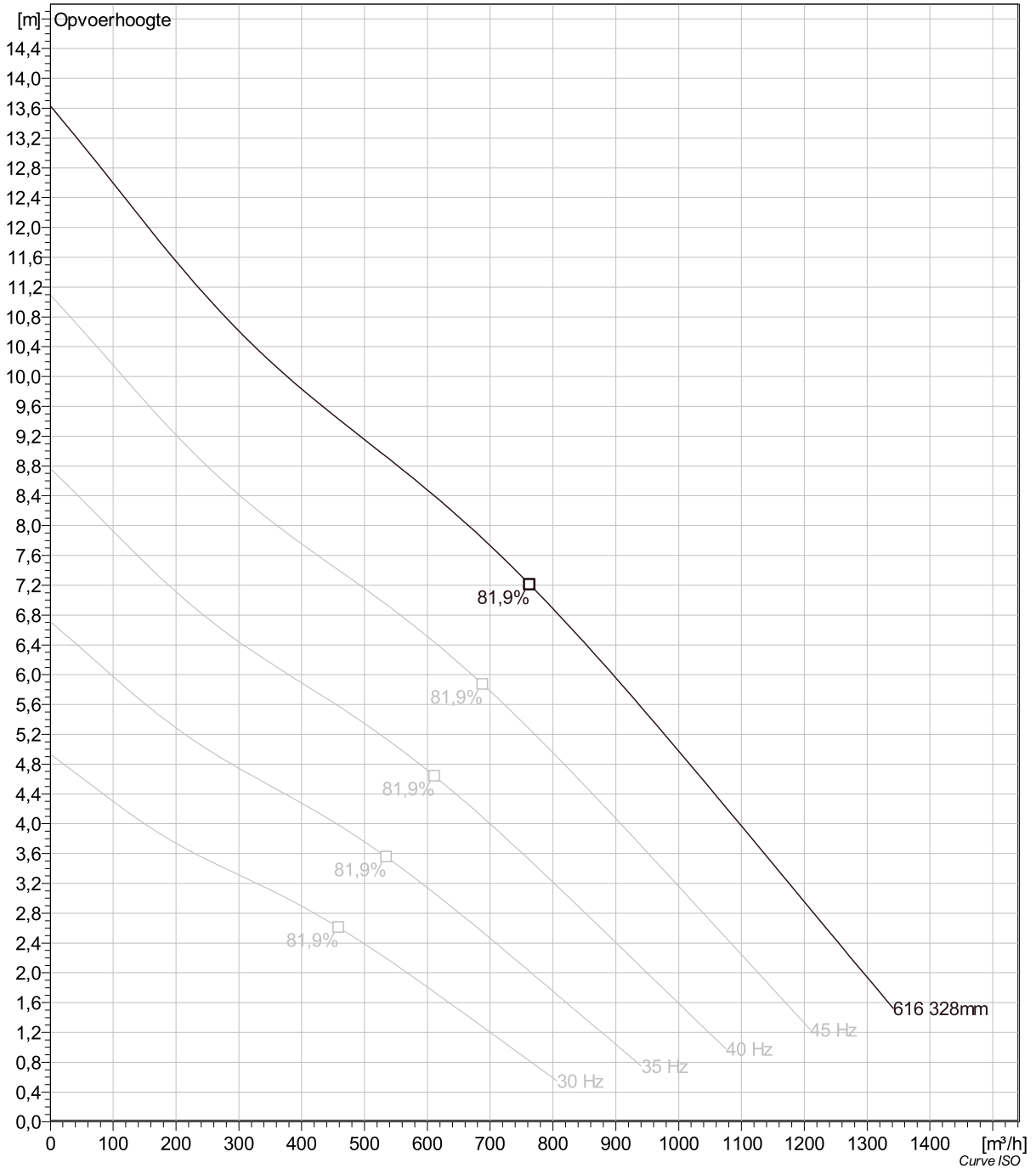
Motor #	N3202.180 30-18-6AA-W 22KW
Stator variant	1
Frequentie	50 Hz
Nominale spanning	380 V
Aantal polen	6
Fasen	3~
Nominaal vermogen	22 kW
Toegekende stroom	44 A
Aanloopstroom	225 A
Nominaal toerental	970 rpm

Vermogensfactor	
1/1 Load	0,87
3/4 Load	0,84
1/2 Load	0,76
Motor efficiency	
1/1 Load	88,0 %
3/4 Load	89,5 %
1/2 Load	89,5 %



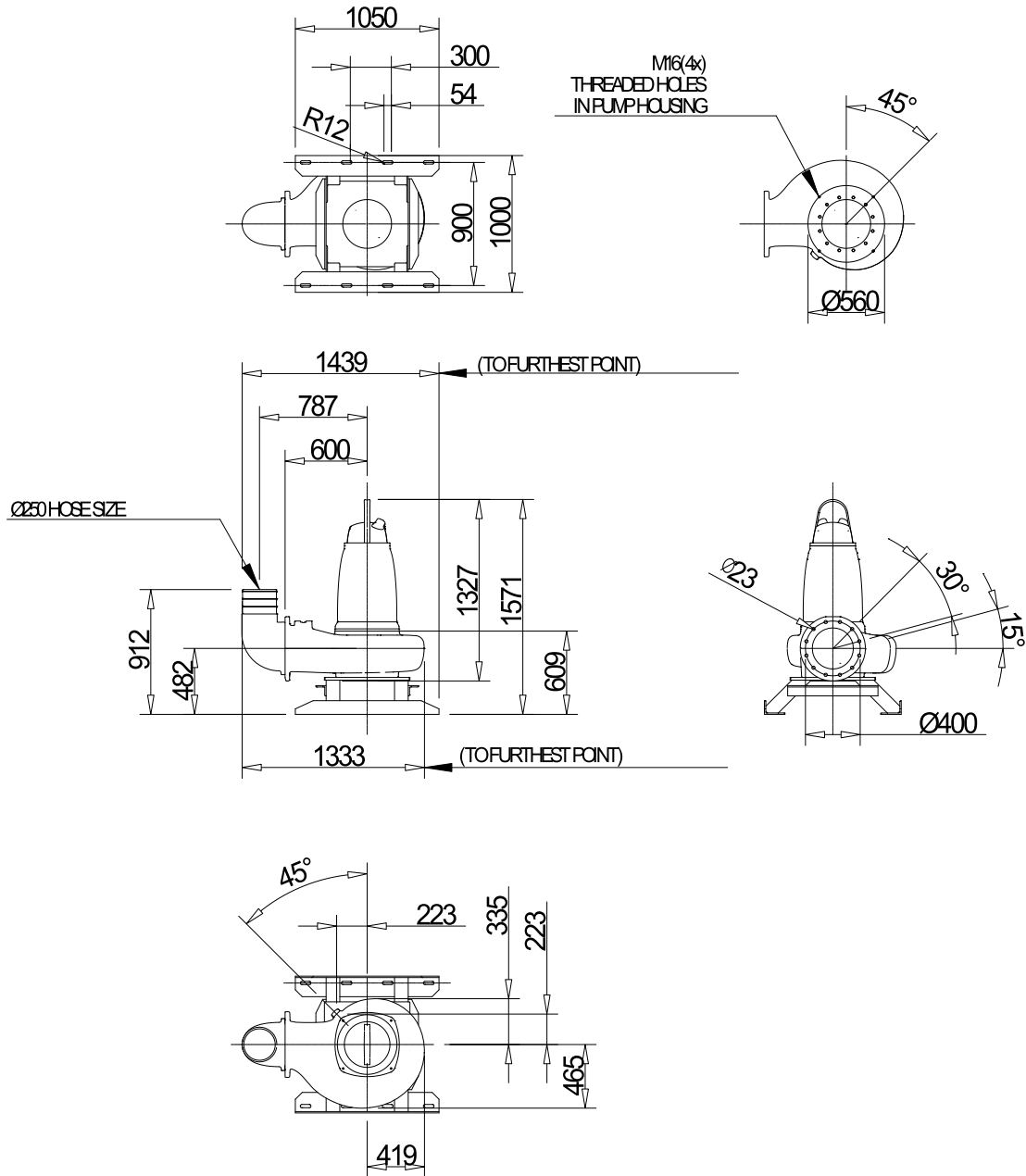
Project	Project ID	Created by	Created on 10/5/2018	Last update
---------	------------	------------	-------------------------	-------------

NS 3202 LT 3~ 616 VFD Analysis



Project	Project ID	Created by	Created on	Last update
			10/5/2018	

NS 3202 LT 3~ 616 Dimensional drawing



NS 3202,080,095,180,185,350,390,660,670 LT

Weight (kg)
Total incl. stand
900

Dimensional dwg

NS 3202,090,095,180,185,350,390,660,670 LT

Project	Project ID	Created by	Created on 10/5/2018	Last update
---------	------------	------------	-------------------------	-------------