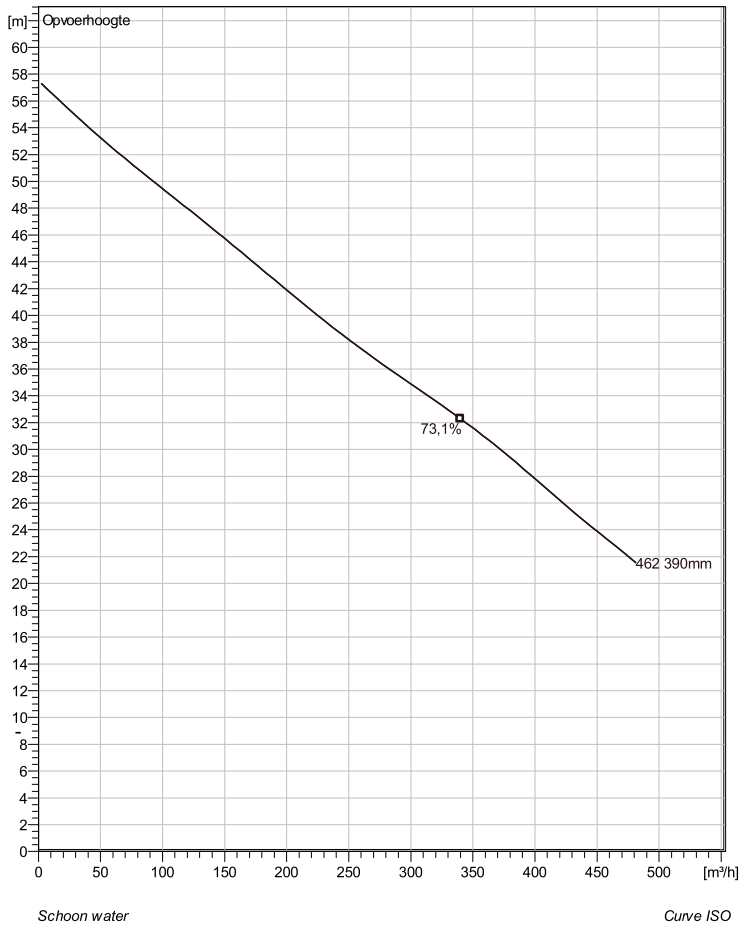


## NS 3301 HT 3~ 462 Technische specificaties



Note: Picture might not correspond to the current configuration.

### General

Dompelbare pompen voorzien van een verstoppingsongevoeilige N-waaiër. Geschikt voor afvalwater met grotere delen zoals rioolwater, regenwater en industriële afvalwater. Materiaal gietijzer.

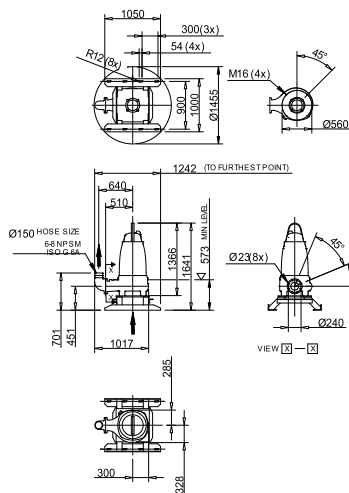
### Impeller

|                       |                 |
|-----------------------|-----------------|
| Impeller materiaal    | Stainless steel |
| Persaansluiting       | 150 mm          |
| Diameter aanzuigzijde | 150 mm          |
| Impeller diameter     | 390 mm          |
| Aantal bladen         | 2               |

### Motor

|                    |                                      |
|--------------------|--------------------------------------|
| Motor #            | N3301.660 35-25-4AA-W 55KW standaard |
| Stator variant     | 1                                    |
| Frequentie         | 50 Hz                                |
| Nominale spanning  | 380 V                                |
| Aantal polen       | 4                                    |
| Fasen              | 3~                                   |
| Nominaal vermogen  | 55 kW                                |
| Toegekende stroom  | 102 A                                |
| Aanloopstroom      | 490 A                                |
| Nominaal toerental | 1475 rpm                             |
| Vermogensfactor    |                                      |
| 1/1 Load           | 0,89                                 |
| 3/4 Load           | 0,88                                 |
| 1/2 Load           | 0,82                                 |
| Motor efficiency   |                                      |
| 1/1 Load           | 91,7 %                               |
| 3/4 Load           | 93,0 %                               |
| 1/2 Load           | 93,6 %                               |

### Soort installatie: Semi permanent, Nat



NS 3301.000.005.180.185  
660.670-HT

Dimensional drawing  
NS 3301.000.005.180.185.660.670-HT

|         |            |            |                         |             |
|---------|------------|------------|-------------------------|-------------|
| Project | Project ID | Created by | Created on<br>10/5/2018 | Last update |
|---------|------------|------------|-------------------------|-------------|

## NS 3301 HT 3~ 462

### Karakteristiek

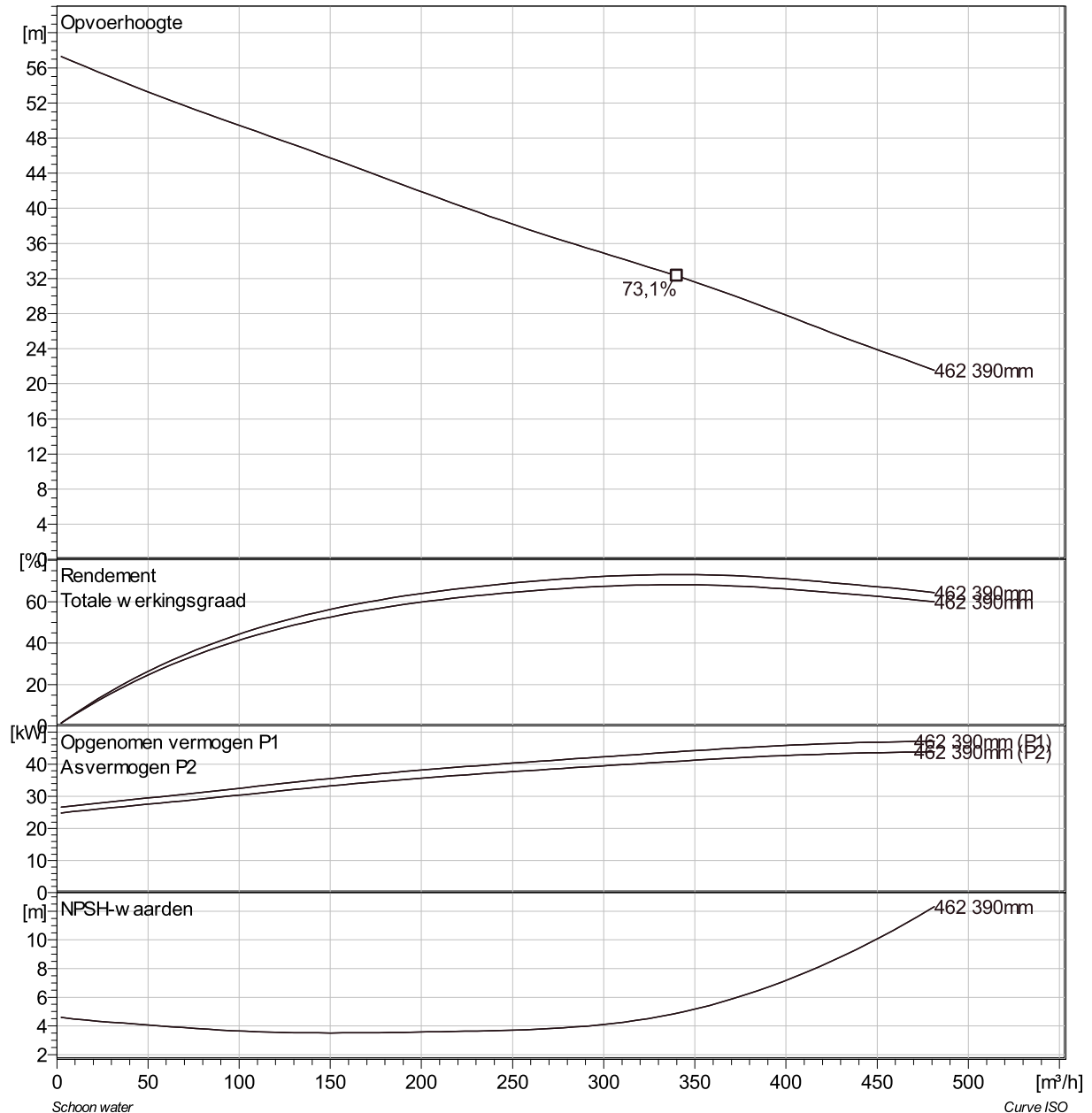
#### Pomp

|                       |        |
|-----------------------|--------|
| Persaansluiting       | 150 mm |
| Diameter aanzuigzijde | 150 mm |
| Impeller diameter     | 390 mm |
| Aantal bladen         | 2      |

#### Motor

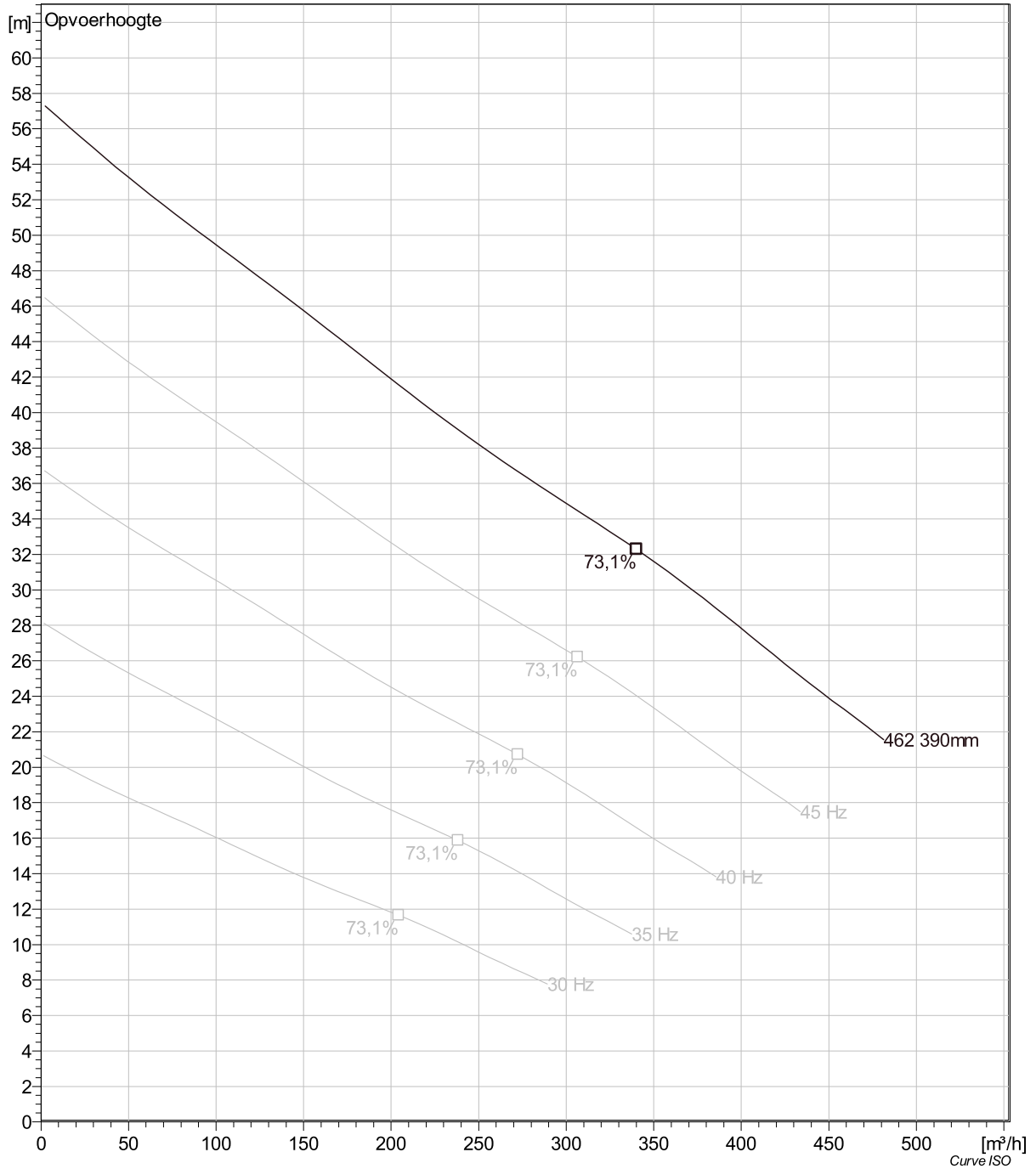
|                    |                            |
|--------------------|----------------------------|
| Motor #            | N3301.660 35-25-4AA-W 55KW |
| Stator variant     | 1                          |
| Frequentie         | 50 Hz                      |
| Nominale spanning  | 380 V                      |
| Aantal polen       | 4                          |
| Fasen              | 3~                         |
| Nominaal vermogen  | 55 kW                      |
| Toegekende stroom  | 102 A                      |
| Aanloopstroom      | 490 A                      |
| Nominaal toerental | 1475 rpm                   |

|                  |        |
|------------------|--------|
| Vermogensfactor  |        |
| 1/1 Load         | 0,89   |
| 3/4 Load         | 0,88   |
| 1/2 Load         | 0,82   |
| Motor efficiency |        |
| 1/1 Load         | 91,7 % |
| 3/4 Load         | 93,0 % |
| 1/2 Load         | 93,6 % |



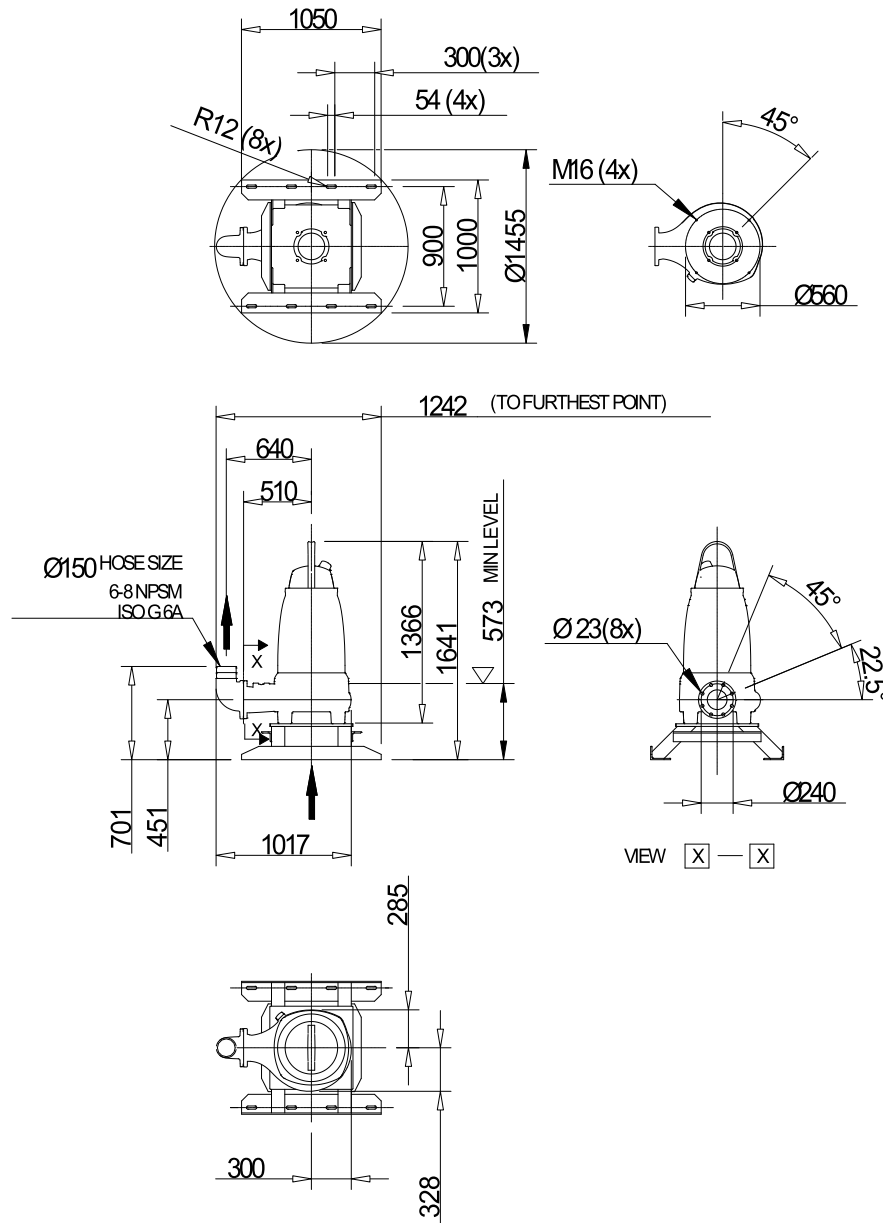
|         |            |            |                         |             |
|---------|------------|------------|-------------------------|-------------|
| Project | Project ID | Created by | Created on<br>10/5/2018 | Last update |
|---------|------------|------------|-------------------------|-------------|

## NS 3301 HT 3~ 462 VFD Analysis



| Project | Project ID | Created by | Created on | Last update |
|---------|------------|------------|------------|-------------|
|         |            |            | 10/5/2018  |             |

## NS 3301 HT 3~ 462 Dimensional drawing



NS 3301.090, 095, 180, 185, 660,  
670 HT

Dimensional dwg  
NS3301.090,095,180,185,660,670 HT

| Project | Project ID | Created by | Created on | Last update |
|---------|------------|------------|------------|-------------|
|         |            |            | 10/5/2018  |             |