

Parts List

8101.160 Minex 1~ | 8101.172 Minex Lite, Minex 3~



Table of Contents

Introduction.....	2
Specially approved products.....	2
Product Description.....	3
Products included.....	3
The data plate.....	3
Exploded View.....	4
8101.160/.172.....	4
Spare Parts.....	5
8101.160/.172.....	5

Introduction

Purpose of this manual

The purpose of this manual is to provide necessary information on spare parts and accessories order.

Disclaimer

Always use genuine Grindex parts. The use of other spare parts or accessories can invalidate any claims for warranty or compensation. Grindex does not take any responsibility for damages that are caused by the use of non-original parts. For more information, contact your local sales and service representative.

Data for ordering spare parts

The following information is needed for spare part orders:

- Serial number of the product
- Part number
- Quantity of bulk material, see * in tables

Specially approved products

Qualification of personnel

Only Grindex or Grindex-authorized service personnel may undertake repair work on Ex-approved products.

Dimensional accuracy inspection

Spare parts marked with (Ex) after the part number are subject to dimensional accuracy inspection when used in specially approved products.

Product Description

Products included

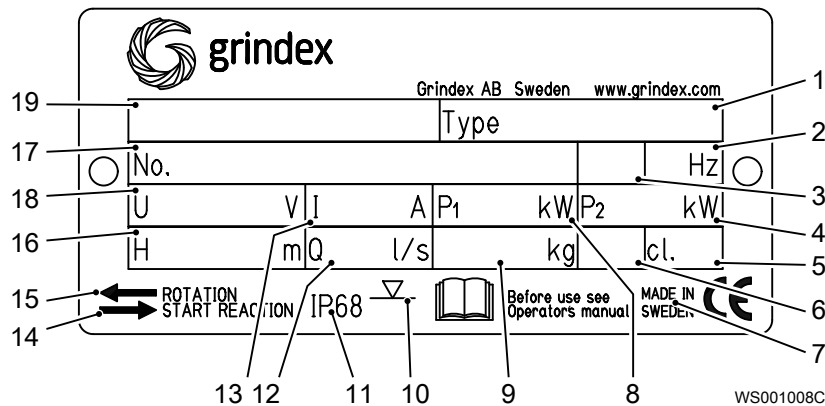
Pump model	Standard	EX	MSHA	Drainage	Sludge
Minex 8101.160	X			X	
Minex 8101.172	X			X	

The data plate

Introduction

The data plate is a metal label located on the main body of the pump. The data plate lists key product specifications.

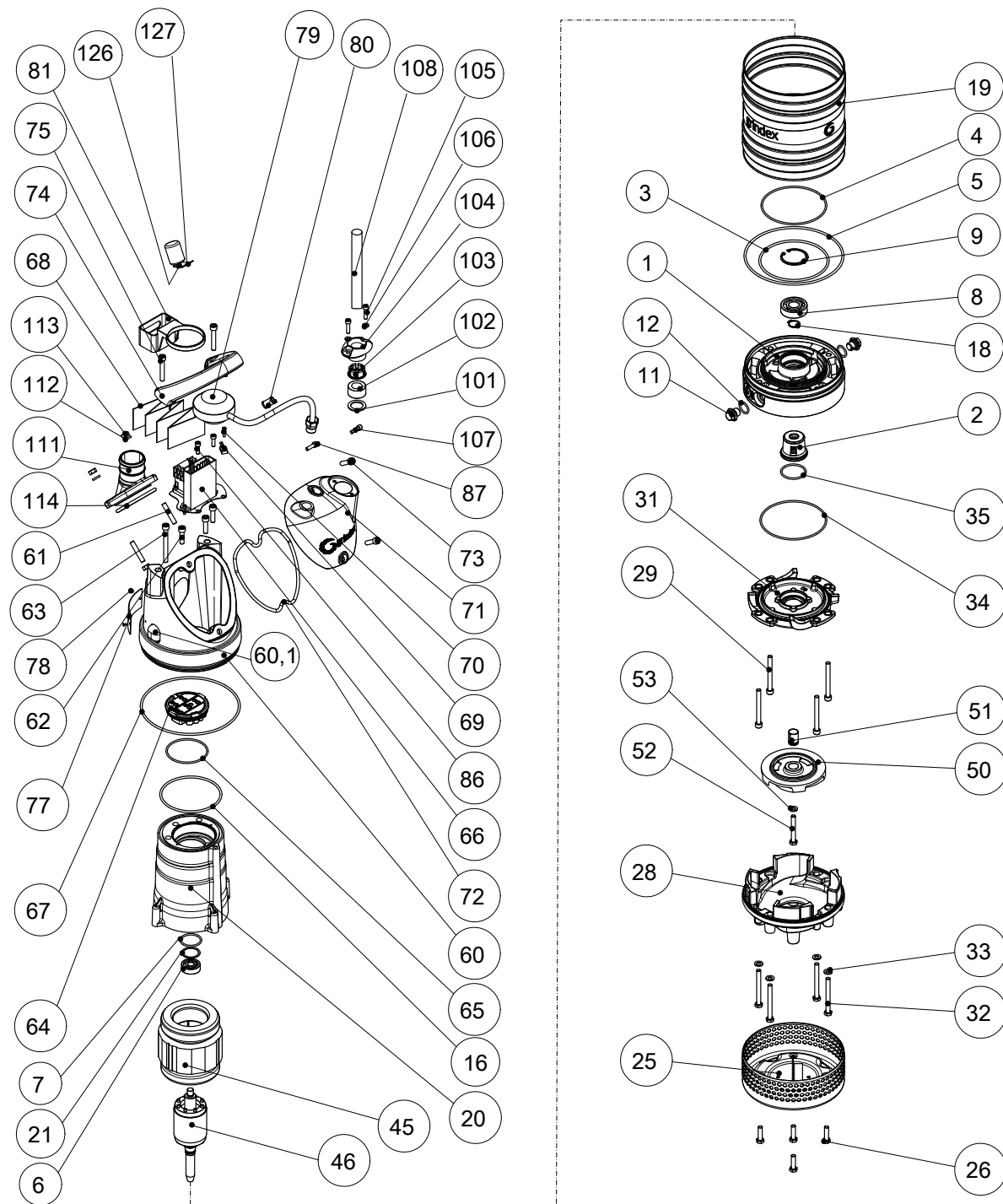
The data plate



1. Pump type number
2. Frequency
3. Phases, type of current
4. Rated shaft power
5. Thermal class
6. Locked rotor code-letter
7. Country of origin
8. Maximum power consumption
9. Product weight
10. Maximum submersion depth
11. Degree of protection
12. Maximum capacity
13. Rated current
14. Direction of the start reaction
15. Direction of the impeller rotation
16. Maximum head
17. Serial number
18. Rated voltage
19. Pump model

Exploded View

8101.160/.172



PLUG CONTACT	PHASE SHIFTER	O-RING KIT	BASIC REPAIR KIT
90	92	800	900

20124D_8101_160_172_expl_view

Spare Parts

8101.160/.172

Pos. No	Part. No	Denomination	Qty/Version	
			160	172
1	51 707 00	Intermediate piece	1	1
2	51 728 50	Mechanical seal	1	1
3	410 020	O-ring 127.0X4.0 NBR	1	1
4	50 037 01	O-ring 119.5X3 NBR	1	1
5	410 914	O-ring	1	1
6	50 287 03	Ball bearing 12X37X12 MM	1	1
7	50 037 63	O-ring 36.2X3.0 FPM	1	1
8	50 287 04	Ball bearing 20X52X15 MM	1	1
9	410 834	Retaining ring	1	1
11	133 063	Inspection screw	2	2
12	133 064	O-ring 19.2X3 NBR	2	2
14	410 053	Oil ISO VG 32	*	*
16	50 772 84	O-ring 114X4.0 NBR	1	1
17	50 992 00	Sticker CUT HAZARD	1	1
18	50 278 02	Retaining ring SGA 20	1	1
19	51 719 00	Outer casing	1	
19	51 719 01	Outer casing		1
20	51 681 02	Stator housing	1	
20	51 682 00	Stator housing		1
21	410 904	Spring washer	1	1
23	50 136 00	Instruction label	1	1
25	51 717 00	Strainer	1	1
26	410 002	Hexagon head screw M8X30-A4-70	4	4
28	51 701 00	Diffuser	1	1
		N Diffusor material: NBR Not prepared for zinc anodes		
28	51 701 01	Diffuser	1	1
		N Diffusor material: NBR Prepared for zinc anodes		
29	410 830	Hex.socket hd screw M8X80-A2-70	4	4
31	51 705 00	Seal housing cover	1	1
32	410 831	Hexagon head screw M8X80-A2-70	4	4
33	50 021 38	Plain washer 8-A4-170HV	4	4
34	50 037 01	O-ring 119.5X3 NBR	1	1

Pos. No	Part. No	Denomination	Qty/Version	
			160	172
35	50 037 61	O-ring 44.2X3 NBR	1	1
44	410 057	Insulating hose D=14 MM	*	*
44	410 770	Insulating hose D=18 MM		*
45	50 913 06	Stator 13-10-2b	8-leads 1-phase 60 Hz 2-poles 115V //	1
45	50 913 00	Stator 13-10-2b	4-leads 1-phase 50 Hz 2-poles 220V-240V	1
45	50 913 02	Stator 13-10-2b	4-leads 1-phase 60 Hz 2-poles 220V-240V	1
45	50 933 00	Stator 13-06-2b	6-leads 3-phase 50 Hz 2-poles 220V-240V D 6-leads 3-phase 50 Hz 2-poles 380V-400V Y 3-phase 60Hz 440V-480V Y	1
45	50 933 03	Stator 13-06-2b	6-leads 3-phase 60 Hz 2-poles 220V-240V D	1
45	50 933 02	Stator 13-06-2b	9-leads 3-phase 60 Hz 2-poles 440V-480V YSER 9-leads 3-phase 60 Hz 2-poles 220V-240V Y//	1
45	50 933 07	Stator 13-06-2b	12-leads 3-phase 60 Hz 2-poles 220V-230V D// 12-leads 3-phase 60 Hz 2-poles 380V-400V Y// 12-leads 3-phase 60 Hz 2-poles 440V-460V DSER	1
45	50 933 08	Stator 13-06-2b	3-leads 3-phase 50 Hz 2-poles 380V-400V Y 3-leads 3-phase 60 Hz 2-poles 440V-480V Y	1
45	50 933 10	Stator 13-06-2b	6-leads 3-phase 50 Hz 2-poles 415V-440V Y	1
45	50 933 09	Stator 13-06-2b	3-leads 3-phase 50 Hz 2-poles 500V Y 3-leads 3-phase 60 Hz 2-poles 575V-600V Y 3-leads 3-phase 50 Hz 2-poles 525V-550V Y	1
45	50 934 03	Stator 13-06-2b	4-leads 1-phase 50 Hz 2-poles 110V	1
45	50 934 01	Stator 13-06-2b	4-leads 1-phase 60 Hz 2-poles 115V	1
45	50 934 02	Stator 13-06-2b	4-leads 1-phase 50 Hz 2-poles 220V-240V	1
45	50 934 00	Stator 13-06-2b	4-leads 1-phase 60 Hz 2-poles 220V-240V	1
46	51 724 02	Shaft unit	8-leads 1-phase 60 Hz 2-poles 115V //	1

Pos. No	Part. No	Denomination	Qty/Version	
			160	172
46	51 724 00	Shaft unit 4-leads 1-phase 60 Hz 2-poles 220V-240V 4-leads 1-phase 50 Hz 2-poles 220V-240V	1	
46	51 724 01	Shaft unit 6-leads 3-phase 50 Hz 2-poles 415V-440V Y 4-leads 1-phase 50 Hz 2-poles 110V 6-leads 3-phase 50 Hz 2-poles 220V-240V D 3-leads 3-phase 50 Hz 2-poles 500V Y 3-leads 3-phase 60 Hz 2-poles 575V-600V Y 4-leads 1-phase 50 Hz 2-poles 220V-240V 12-leads 3-phase 60 Hz 2-poles 220V-230V D// 3-leads 3-phase 50 Hz 2-poles 380V-400V Y 3-leads 3-phase 60 Hz 2-poles 440V-480V Y 12-leads 3-phase 60 Hz 2-poles 380V-400V Y// 4-leads 1-phase 60 Hz 2-poles 220V-240V 6-leads 3-phase 60 Hz 2-poles 220V-240V D 12-leads 3-phase 60 Hz 2-poles 440V-460V DSER 9-leads 3-phase 60 Hz 2-poles 440V-480V YSER 9-leads 3-phase 60 Hz 2-poles 220V-240V Y// 6-leads 3-phase 50 Hz 2-poles 380V-400V Y 3-phase 60Hz 440V-480V Y 3-leads 3-phase 50 Hz 2-poles 525V-550V Y 4-leads 1-phase 60 Hz 2-poles 115V		1
47	410 034	Closed-end splice 3-6(AWG 12-10) L=18	2	
48	50 900 10	Electric cable	2	
50	51 694 00	Impeller N 50Hz 1-phase Max ambient temp=40 DC	1	
50	51 695 01	Impeller N 230V 60Hz 1-phase Max ambient temp=40 DC	1	
50	51 695 02	Impeller N 115V 60Hz 1-phase Max ambient temp=40 DC	1	

Pos. No	Part. No	Denomination	Qty/Version	
			160	172
50	51 695 04	Impeller		1
50	51 694 00	Impeller		1
50	51 695 03	Impeller		1
50	51 695 00	Impeller		1
51	51 721 00	Sleeve unit	1	1
52	410 006	Hexagon head screw M8X60-A4-80	1	1
53	50 021 38	Plain washer 8-A4-170HV	1	1
60	51 782 00	Cover	1	1
	60,1 51 780 00	Air release valve	2	2
	60,2 -	Main cover	1	
	60,2 -	Main cover		1
61	410 689	Stud M8X45-A2-70	2	2
62	140 050	Hex.socket hd screw M8X30-A2-70	3	3
63	410 830	Hex.socket hd screw M8X80-A2-70	1	1
64	51 711 01	Terminal plate unit		1-phase
	64,1 51 641 01	Terminal plate unit	1	1
	64,2 51 713 05	Cable set	1	1
64	51 711 00	Terminal plate unit		3-phase
	64,1 51 641 01	Terminal plate unit		1
	64,2 51 713 05	Cable set		1
65	50 037 58	O-ring 74.5X3.0 NBR	1	1
66	51 712 13	Starter unit	1	Contactor unit 50Hz 1- phase 110V - 115V 1-phase Not CSA approved Contactor unit 60Hz 1- phase 115V - 115V 1-phase Float switch CSA approved
	66,1 51 716 00	Holder	1	
	66,5 410 776	Contactor	1	
	66,8 410 008	Hex.socket hd screw M4X16-A2-70	2	
	66,9 410 012	Lock nut	2	
	66,13 51 713 03	Cable set	1	
	66,14 51 713 04	Cable set	1	
	66,15 50 900 03	Electric cable AWG 16;L=70MM CSA	1	

Pos. No	Part. No	Denomination	Qty/Version	
			160	172
66,16	51 713 06	Cable set	1	
66	51 712 02	Starter unit Capacitor unit 50Hz 1-phase 220V - 240V 1-phase Float switch Not CSA approved Capacitor unit 60Hz 1-phase 220V - 240V 1-phase Float switch CSA approved	1	
66,1	51 716 00	Holder	1	
66,2	51 830 00	Capacitor	1	
66,3	410 376	Capacitor 20MF 400V	1	
66,4	50 906 02	Start relay SNT	1	
66,6	410 008	Hex.socket hd screw M4X16-A2-70	2	
66,7	410 012	Lock nut	2	
66,10	51 004 00	Cable set	1	
66,11	51 713 01	Cable set	1	
66,12	51 713 02	Cable set	1	
66,19	50 021 36	Lock nut M8-A4-70	2	
66	51 712 33	Starter unit Contactor unit 50Hz 3-phase 220V - 240V Float switch Not CSA approved		1
66,1	51 716 00	Holder		1
66,4	51 511 07	Motor protector SMART		1
66,5	410 111	Contactor		1
66,6	410 008	Hex.socket hd screw M4X16-A2-70		2
66,7	410 012	Lock nut		2
66,8	410 008	Hex.socket hd screw M4X16-A2-70		2
66,9	410 012	Lock nut		2
66,12	51 713 02	Cable set		1
66,14	51 713 04	Cable set		1
66,16	51 713 06	Cable set		1
66,17	50 900 62	Single-core cable		1
66,18	50 509 00	Cable set		1
66	51 712 34	Starter unit Contactor unit 50Hz 3-phase 380V - 400V Float switch Not CSA approved		1
66,1	51 716 00	Holder		1
66,4	51 511 05	Motor protector SMART		1
66,5	410 109	Contactor		1

Pos. No	Part. No	Denomination	Qty/Version	
			160	172
66,6	410 008	Hex.socket hd screw M4X16-A2-70		2
66,7	410 012	Lock nut		2
66,8	410 008	Hex.socket hd screw M4X16-A2-70		2
66,9	410 012	Lock nut		2
66,12	51 713 02	Cable set		1
66,14	51 713 04	Cable set		1
66,16	51 713 06	Cable set		1
66,17	50 900 62	Single-core cable		1
66,18	50 509 00	Cable set		1
66	51 712 35	Starter unit	Contactor unit 50Hz 3- phase 415V - 440V Not CSA approved	1
66,1	51 716 00	Holder		1
66,4	51 511 05	Motor protector SMART		1
66,5	410 163	Contactor		1
66,6	410 008	Hex.socket hd screw M4X16-A2-70		2
66,7	410 012	Lock nut		2
66,8	410 008	Hex.socket hd screw M4X16-A2-70		2
66,9	410 012	Lock nut		2
66,12	51 713 02	Cable set		1
66,14	51 713 04	Cable set		1
66,16	51 713 06	Cable set		1
66,17	50 900 62	Single-core cable		1
66,18	50 509 00	Cable set		1
66	51 712 36	Starter unit	Contactor unit 50Hz 3- phase 500V - 500V Not CSA approved Contactor unit 50Hz 3- phase 525V - 550V Not CSA approved	1
66,1	51 716 00	Holder		1
66,4	51 511 05	Motor protector SMART		1
66,5	410 110	Contactor		1
66,6	410 008	Hex.socket hd screw M4X16-A2-70		2
66,7	410 012	Lock nut		2
66,8	410 008	Hex.socket hd screw M4X16-A2-70		2
66,9	410 012	Lock nut		2

Pos. No	Part. No	Denomination	Qty/Version	
			160	172
	66,12 51 713 02	Cable set		1
	66,14 51 713 04	Cable set		1
	66,16 51 713 06	Cable set		1
	66,17 50 900 62	Single-core cable		1
	66,18 50 509 00	Cable set		1
66	51 712 43	Starter unit	Contactor unit 60Hz 3-phase 220V - 240V Float switch CSA approved	1
	66,1 51 716 00	Holder		1
	66,4 51 511 08	Motor protector SMART		1
	66,5 410 111	Contactor		1
	66,6 410 008	Hex.socket hd screw M4X16-A2-70		2
	66,7 410 012	Lock nut		2
	66,8 410 008	Hex.socket hd screw M4X16-A2-70		2
	66,9 410 012	Lock nut		2
	66,12 51 713 02	Cable set		1
	66,14 51 713 04	Cable set		1
	66,16 51 713 06	Cable set		1
	66,17 50 900 62	Single-core cable		1
	66,18 50 509 00	Cable set		1
66	51 712 44	Starter unit	Contactor unit 60Hz 3-phase 380V - 400V Float switch Not CSA approved	1
	66,1 51 716 00	Holder		1
	66,4 51 511 06	Motor protector SMART		1
	66,5 410 109	Contactor		1
	66,6 410 008	Hex.socket hd screw M4X16-A2-70		2
	66,7 410 012	Lock nut		2
	66,8 410 008	Hex.socket hd screw M4X16-A2-70		2
	66,9 410 012	Lock nut		2
	66,12 51 713 02	Cable set		1
	66,14 51 713 04	Cable set		1
	66,16 51 713 06	Cable set		1
	66,17 50 900 62	Single-core cable		1
	66,18 50 509 00	Cable set		1
66	51 712 45	Starter unit	Contactor unit 60Hz 3-phase 440V - 480V CSA approved	1

Pos. No	Part. No	Denomination	Qty/Version	
			160	172
66,1	51 716 00	Holder		1
66,4	51 511 06	Motor protector SMART		1
66,5	410 163	Contactactor		1
66,6	410 008	Hex.socket hd screw M4X16-A2-70		2
66,7	410 012	Lock nut		2
66,8	410 008	Hex.socket hd screw M4X16-A2-70		2
66,9	410 012	Lock nut		2
66,12	51 713 02	Cable set		1
66,14	51 713 04	Cable set		1
66,16	51 713 06	Cable set		1
66,17	50 900 62	Single-core cable		1
66,18	50 509 00	Cable set		1
66	51 712 47	Starter unit	Contactor unit 60Hz 3- phase 575V - 600V CSA approved	1
66,1	51 716 00	Holder		1
66,4	51 511 06	Motor protector SMART		1
66,5	410 902	Contactactor		1
66,6	410 008	Hex.socket hd screw M4X16-A2-70		2
66,7	410 012	Lock nut		2
66,8	410 008	Hex.socket hd screw M4X16-A2-70		2
66,9	410 012	Lock nut		2
66,12	51 713 02	Cable set		1
66,14	51 713 04	Cable set		1
66,16	51 713 06	Cable set		1
66,17	50 900 62	Single-core cable		1
66,18	50 509 00	Cable set		1
66	51 712 38	Starter unit	Contactor unit 50Hz 3- phase 380V - 400V Float switch with isolated input Not CSA approved	1
66,1	51 716 00	Holder		1
66,4	51 511 05	Motor protector SMART		1
66,5	410 109	Contactactor		1
66,6	410 008	Hex.socket hd screw M4X16-A2-70		2
66,7	410 012	Lock nut		2

Pos. No	Part. No	Denomination	Qty/Version	
			160	172
66,8	410 008	Hex.socket hd screw M4X16-A2-70		2
66,9	410 012	Lock nut		2
66,14	51 713 04	Cable set		1
66,16	51 713 06	Cable set		1
66,17	50 900 62	Single-core cable		1
66,18	50 509 00	Cable set		1
66,20	51 779 00	Supervision relay		1
66,21	50 457 00	Cable tie		1
66,22	410 034	Closed-end splice 3-6(AWG 12-10) L=18		1
66	51 712 39	Starter unit	Contactor unit 50Hz 3- phase 415V - 440V Float switch with isolated input Not CSA approved	1
66,1	51 716 00	Holder		1
66,4	51 511 05	Motor protector SMART		1
66,5	410 163	Contactor		1
66,6	410 008	Hex.socket hd screw M4X16-A2-70		2
66,7	410 012	Lock nut		2
66,8	410 008	Hex.socket hd screw M4X16-A2-70		2
66,9	410 012	Lock nut		2
66,14	51 713 04	Cable set		1
66,16	51 713 06	Cable set		1
66,17	50 900 62	Single-core cable		1
66,18	50 509 00	Cable set		1
66,20	51 779 00	Supervision relay		1
66,21	50 457 00	Cable tie		1
66,22	410 034	Closed-end splice 3-6(AWG 12-10) L=18		1
66	51 712 40	Starter unit	Contactor unit 50Hz 3- phase 500V - 500V Float switch with isolated input Not CSA approved Contactor unit 50Hz 3- phase 525V - 550V Float switch with isolated input Not CSA approved	1
66,1	51 716 00	Holder		1
66,4	51 511 05	Motor protector SMART		1
66,5	410 902	Contactor		1

Pos. No	Part. No	Denomination	Qty/Version	
			160	172
66,6	410 008	Hex.socket hd screw M4X16-A2-70		2
66,7	410 012	Lock nut		2
66,8	410 008	Hex.socket hd screw M4X16-A2-70		2
66,9	410 012	Lock nut		2
66,14	51 713 04	Cable set		1
66,16	51 713 06	Cable set		1
66,17	50 900 62	Single-core cable		1
66,18	50 509 00	Cable set		1
66,20	51 779 00	Supervision relay		1
66,21	50 457 00	Cable tie		1
66,22	410 034	Closed-end splice 3-6(AWG 12-10) L=18		1
66	51 712 49	Starter unit	Contactor unit 60Hz 3- phase 440V - 480V Float switch with isolated input CSA approved	1
66,1	51 716 00	Holder		1
66,4	51 511 06	Motor protector SMART		1
66,5	410 163	Contactor		1
66,6	410 008	Hex.socket hd screw M4X16-A2-70		2
66,7	410 012	Lock nut		2
66,8	410 008	Hex.socket hd screw M4X16-A2-70		2
66,9	410 012	Lock nut		2
66,14	51 713 04	Cable set		1
66,16	51 713 06	Cable set		1
66,17	50 900 62	Single-core cable		1
66,18	50 509 00	Cable set		1
66,20	51 779 00	Supervision relay		1
66,21	50 457 00	Cable tie		1
66,22	410 034	Closed-end splice 3-6(AWG 12-10) L=18		1
66	51 712 50	Starter unit	Contactor unit 60Hz 3- phase 575V - 600V Float switch with isolated input CSA approved	1
66,1	51 716 00	Holder		1
66,4	51 511 06	Motor protector SMART		1
66,5	410 902	Contactor		1

Pos. No	Part. No	Denomination	Qty/Version	
			160	172
66,6	410 008	Hex.socket hd screw M4X16-A2-70		2
66,7	410 012	Lock nut		2
66,8	410 008	Hex.socket hd screw M4X16-A2-70		2
66,9	410 012	Lock nut		2
66,14	51 713 04	Cable set		1
66,16	51 713 06	Cable set		1
66,17	50 900 62	Single-core cable		1
66,18	50 509 00	Cable set		1
66,20	51 779 00	Supervision relay		1
66,21	50 457 00	Cable tie		1
66,22	410 034	Closed-end splice 3-6(AWG 12-10) L=18		1
66	51 712 00	Starter unit	Capacitor unit 50Hz 1- phase 110V - 115V 1-phase Float switch Not CSA approved Capacitor unit 60Hz 1- phase 115V - 115V 1-phase Float switch CSA approved	1
66,1	51 716 00	Holder		1
66,2	51 827 00	Capacitor		1
66,3	410 138	Capacitor 80 MFD 275V		1
66,4	50 906 03	Start relay SNT		1
66,6	410 008	Hex.socket hd screw M4X16-A2-70		2
66,7	410 012	Lock nut		2
66,10	51 004 00	Cable set		1
66,11	51 713 01	Cable set		1
66,12	51 713 02	Cable set		1
66,19	50 021 36	Lock nut M8-A4-70		2
66	51 712 01	Starter unit	Capacitor unit 60Hz 1- phase 220V - 240V 1-phase Float switch CSA approved Capacitor unit 50Hz 1- phase 220V - 240V 1-phase Float switch Not CSA approved	1
66,1	51 716 00	Holder		1
66,2	51 825 00	Capacitor		1
66,3	410 835	Capacitor		1
66,4	50 906 02	Start relay SNT		1

Pos. No	Part. No	Denomination	Qty/Version	
			160	172
66,6	410 008	Hex.socket hd screw M4X16-A2-70		2
66,7	410 012	Lock nut		2
66,10	51 004 00	Cable set		1
66,11	51 713 01	Cable set		1
66,12	51 713 02	Cable set		1
66,19	50 021 36	Lock nut M8-A4-70		2
67	410 914	O-ring	1	1
68	51 671 00	Connection plate	1	1
69	51 725 00	Thermal detector unit	1	1
70	410 008	Hex.socket hd screw M4X16-A2-70	1	1
71	51 686 00	Cover	1	1
71	51 686 01	Cover	1	1
72	51 722 00	Gasket	1	1
73	140 050	Hex.socket hd screw M8X30-A2-70	2	2
74	51 690 00	Handle	1	1
75	50 771 32	Hex.socket hd screw M8X50-A2-70	2	2
77	50 888 00	Plate-blank	1	1
78	410 000	Drive screw 4X5-A2/A4	2	2
79	51 726 03	Level regulator unit EU	1	1
		Capacitor unit 50Hz 1- phase 220V - 240V 1-phase Float switch Not CSA approved		
		Contactor unit 50Hz 3- phase 220V - 240V Float switch Not CSA approved		
		Capacitor unit 50Hz 1- phase 110V - 115V 1-phase Float switch Not CSA approved		

Pos. No	Part. No	Denomination	Qty/Version	
			160	172
79	51 726 05	Level regulator unit US/CDN	1	1
		Capacitor unit 60Hz 1-phase 220V - 240V 1-phase Float switch CSA approved		
		Contactor unit 60Hz 3-phase 575V - 600V Float switch with isolated input CSA approved		
		Capacitor unit 60Hz 1-phase 115V - 115V 1-phase Float switch CSA approved		
		Contactor unit 60Hz 3-phase 440V - 480V Float switch with isolated input CSA approved		
		Contactor unit 60Hz 3-phase 220V - 240V Float switch CSA approved		
79	51 726 04	Level regulator unit EU		1
		Contactor unit 50Hz 3-phase 525V - 550V Float switch with isolated input Not CSA approved		
		Contactor unit 50Hz 3-phase 415V - 440V Float switch with isolated input Not CSA approved		
		Contactor unit 60Hz 3-phase 380V - 400V Float switch Not CSA approved		
		Contactor unit 50Hz 3-phase 380V - 400V Float switch Not CSA approved		
		Contactor unit 50Hz 3-phase 500V - 500V Float switch with isolated input Not CSA approved		
		Contactor unit 50Hz 3-phase 380V - 400V Float switch with isolated input Not CSA approved		
80	410 077	Cable clamp STAINLESS STEEL, CR	1	1
81	50 848 00	Holder FOR LEVEL REGULATOR	1	1
86	50 020 00	Hex.socket hd screw M6X20-A2-70	2	2
87	50 020 00	Hex.socket hd screw M6X20-A2-70	1	1
88	51 800 00	Sticker		1

Pos. No	Part. No	Denomination	Qty/Version	
			160	172
90	410 037	Plug contact 1-phase 60 Hz 0V - 125V Current range: 0 - 15A Plug combined with short cable: No cable Supply connection: Plug NEMA 5-15 15A 125V 1-phase 60 Hz 0V - 125V Current range: 0 - 15A Plug combined with short cable: SUBCAB 14AWG/3 Supply connection: Plug NEMA 5-15 15A 125V	1	1
90	410 038	Plug contact 1-phase 60 Hz 0V - 250V Current range: 0 - 15A Plug combined with short cable: No cable Supply connection: Plug NEMA 6-15 15A 250V	1	1
90	410 042	Plug contact 1-phase 50 Hz 220V - 240V Current range: 0 - 16A Plug combined with short cable: No cable Supply connection: CEE 3-PLUG 16A	1	1
90	410 035	Plug contact 1-phase 50 Hz 0V - 250V Current range: 0 - 10A Plug combined with short cable: No cable Supply connection: Plug T12 SEV1011 L+N+PE, 250 V 10 A	1	1
90	50 100 00	Plug contact 3-phase 50 Hz 380V - 415V Current range: 0 - 16A Plug combined with short cable: No cable Supply connection: CEE 5-PLUG 16A Starter (Phase shifter) 3- phase 50/60 Hz 380V - 415V Current range: 0 - 16A Plug combined with short cable: SUBCAB 4G1,5 Supply connection: CEE 5- PLUG 16A		1
90	410 684	Plug contact 3-phase 50 Hz 380V - 415V Current range: 0 - 16A Plug combined with short cable: No cable Supply connection: CEE 4-PLUG 16A		1
90	410 036	Plug contact 1-phase 50/60 Hz 100V - 130V Current range: 0 - 16A Plug combined with short cable: No cable Supply connection: Plug K9000 YEL, 100-130 V, 16A		1

Pos. No	Part. No	Denomination	Qty/Version		
			160	172	
91	410 064	Motor cable subcab	Plug contact 1-phase 60 Hz 0V - 125V Current range: 0 - 15A Plug combined with short cable: SUBCAB 14AWG/3 Supply connection: Plug NEMA 5-15 15A 125V	*	
91	131 040	Motor cable subcab	Starter (Phase shifter) 3-phase 50/60 Hz 380V - 415V Current range: 0 - 16A Plug combined with short cable: SUBCAB 4G1,5 Supply connection: CEE 5-PLUG 16A Starter (Phase shifter) 3-phase 50/60 Hz 220V - 575V Current range: 0 - 16A Plug combined with short cable: SUBCAB 4G1,5		*
91	410 065	Motor cable subcab	Starter (Phase shifter) 3-phase 50/60 Hz 220V - 575V Current range: 0 - 16A Plug combined with short cable: SUBCAB 14AWG/4		*
92	50 102 00	Phase shifter			1
93	51 735 00	Sticker			1
94	51 735 01	Sticker			1
94	51 735 01	Sticker			2
101	50 127 04	Plain washer (10)-22 MM		1	1
102	410 727	Seal sleeve (10)-12 MM	SUBCAB 3G1,5 10 - 11mm Max 750V SUBCAB 4G1,5 10,50 - 11,50mm Max 750V SUBCAB 3G2,5 11 - 12mm Max 750V SUBCAB 3G1,5 10 - 11mm Supply connection: Plug 532.1U Max 250V	1	1
102	410 728	Seal sleeve (12)-14 MM	SUBCAB 14AWG/3 13,20 - 14,20mm Max 600V SUBCAB 4G2,5 12,50 - 13,50mm Max 750V Screened 3x1,5 13,50 - 14,90mm Max 1000V	1	1
102	410 729	Seal sleeve (14)-16 MM	SUBCAB 4G1,5+2x1,5 16 - 17mm Max 750V SUBCAB 14AWG/4 14,20 - 15,20mm Max 600V Screened 3x1,5 13,50 - 14,90mm Max 1000V	1	1

Pos. No	Part. No	Denomination	Qty/Version		
			160	172	
102	410 730	Seal sleeve (16)-18 MM	SUBCAB 12AWG/4 17 - 18mm Max 600V	1	1
102	410 731	Seal sleeve (18)-20 MM	SUBCAB 14AWG/7 18 - 20mm Max 600V SUBCAB S3x2,5+3x2,5/3+S(4x0,5) 18 - 20mm Max 1000V		1
103	50 926 00	Cable clip (10)-12 MM	SUBCAB 3G1,5 10 - 11mm Max 750V SUBCAB 4G1,5 10,50 - 11,50mm Max 750V SUBCAB 3G2,5 11 - 12mm Max 750V SUBCAB 3G1,5 10 - 11mm Supply connection: Plug 532.1U Max 250V	1	1
103	50 926 01	Cable clip (12)-14 MM	SUBCAB 14AWG/3 13,20 - 14,20mm Max 600V SUBCAB 4G2,5 12,50 - 13,50mm Max 750V Screened 3x1,5 13,50 - 14,90mm Max 1000V	1	1
103	50 926 02	Cable clip (14)-16 MM	SUBCAB 4G1,5+2x1,5 16 - 17mm Max 750V SUBCAB 14AWG/4 14,20 - 15,20mm Max 600V Screened 3x1,5 13,50 - 14,90mm Max 1000V	1	1
103	50 926 03	Cable clip (16)-18 MM	SUBCAB 12AWG/4 17 - 18mm Max 600V	1	1
103	50 926 04	Cable clip (18)-20 MM	SUBCAB 14AWG/7 18 - 20mm Max 600V SUBCAB S3x2,5+3x2,5/3+S(4x0,5) 18 - 20mm Max 1000V		1
104	50 932 00	Entrance flange		1	1
105	131 310	Hex.socket hd screw M6X25-A4-70		2	2
106	410 013	Plain washer 6-A4-170		2	2
107	50 020 00	Hex.socket hd screw M6X20-A2-70		1	1
107	50 020 00	Hex.socket hd screw M6X20-A2-70			2
108	51 714 01	Motor cable unit	SUBCAB 3G1,5 10 - 11mm L= 20m Supply connection: Plug 532.1U Max 250V	1	1
108	51 714 02	Motor cable unit	SUBCAB 3G1,5 10 - 11mm L= 20m Max 750V	1	1

Pos. No	Part. No	Denomination	Qty/Version		
			160	172	
108	51 714 03	Motor cable unit	SUBCAB 3G2,5 11 - 12mm L= 20m Max 750V	1	1
108	51 714 04	Motor cable unit	SUBCAB 14AWG/3 13,20 - 14,20mm L= 16m Max 600V	1	1
108	51 714 07	Motor cable unit	SUBCAB 14AWG/4 14,20 - 15,20mm L= 16m Max 600V	1	1
108	51 714 08	Motor cable unit	SUBCAB 12AWG/4 17 - 18mm L= 16m Max 600V	1	1
108	51 714 05	Motor cable unit	SUBCAB 4G1,5 10,50 - 11,50mm L= 20m Max 750V		1
108	51 714 10	Motor cable unit	SUBCAB 4G1,5+2x1,5 16 - 17mm L= 20m Max 750V		1
108	51 714 06	Motor cable unit	SUBCAB 4G2,5 12,50 - 13,50mm L= 20m Max 750V		1
108	51 714 15	Motor cable unit	SUBCAB 14AWG/7 18 - 20mm L= 16m Max 600V		1
108	51 714 09	Motor cable unit	Screened 3x1,5 13,50 - 14,90mm L= 20m Max 1000V		1
108	51 714 19	Motor cable unit	SUBCAB S3x2,5+3x2,5/3+S(4x0,5) 18 - 20mm L= 20m Max 1000V		1
110	410 027	Coupling part	Discharge Connection DN 50 Thread : ISO G2A Outer Quick coupling: Storz aluminium	1	1
110	410 028	Coupling part	Discharge Connection DN 75 Thread : ISO G3A Outer Quick coupling: Storz aluminium	1	1
111	51 149 00	Discharge connection	DN 50 Hose 2" aluminium	1	1
111	51 149 01	Discharge connection	DN 50 Thread : ISO G2A Outer aluminium DN 50 Thread : ISO G2A Outer Quick coupling: Storz aluminium	1	1
111	51 149 02	Discharge connection	DN 50 Thread : NPT 2-11 1/2 Outer aluminium	1	1
111	51 148 00	Discharge connection	DN 75 Hose 3" aluminium	1	1
111	51 148 01	Discharge connection	DN 75 Thread : ISO G3A Outer aluminium DN 75 Thread : ISO G3A Outer Quick coupling: Storz aluminium	1	1

Pos. No	Part. No	Denomination	Qty/Version	
			160	172
111	51 148 02	Discharge connection DN 75 Thread : NPT 3-8 Outer aluminium	1	1
112	410 014	Plain washer A2-170HV M8	2	2
113	50 021 37	Hexagon nut M8-A4-70	2	2
114	410 015	O-ring 79.2X5.7-NBR	1	1
126	131 402	Hexagon nut M5-A4-70	2	2
127	51 773 02	Plate	1	1
800	51 729 00	O-ring kit FPM	1	1
801	51 736 00	Anode unit	1	1
900	51 732 00	Basic repair kit FPM TYPE P SSIC/ SSIC:SSK/SSK	1	1
900,1	50 287 03	Ball bearing 12X37X12 MM	1	1
900,2	50 287 04	Ball bearing 20X52X15 MM	1	1
900,3	51 728 50	Mechanical seal	1	1
900,4	51 729 00	O-ring kit	1	1
900,5	51 829 00	Sticker	1	1
903	51 781 01	Low suction kit	1	1