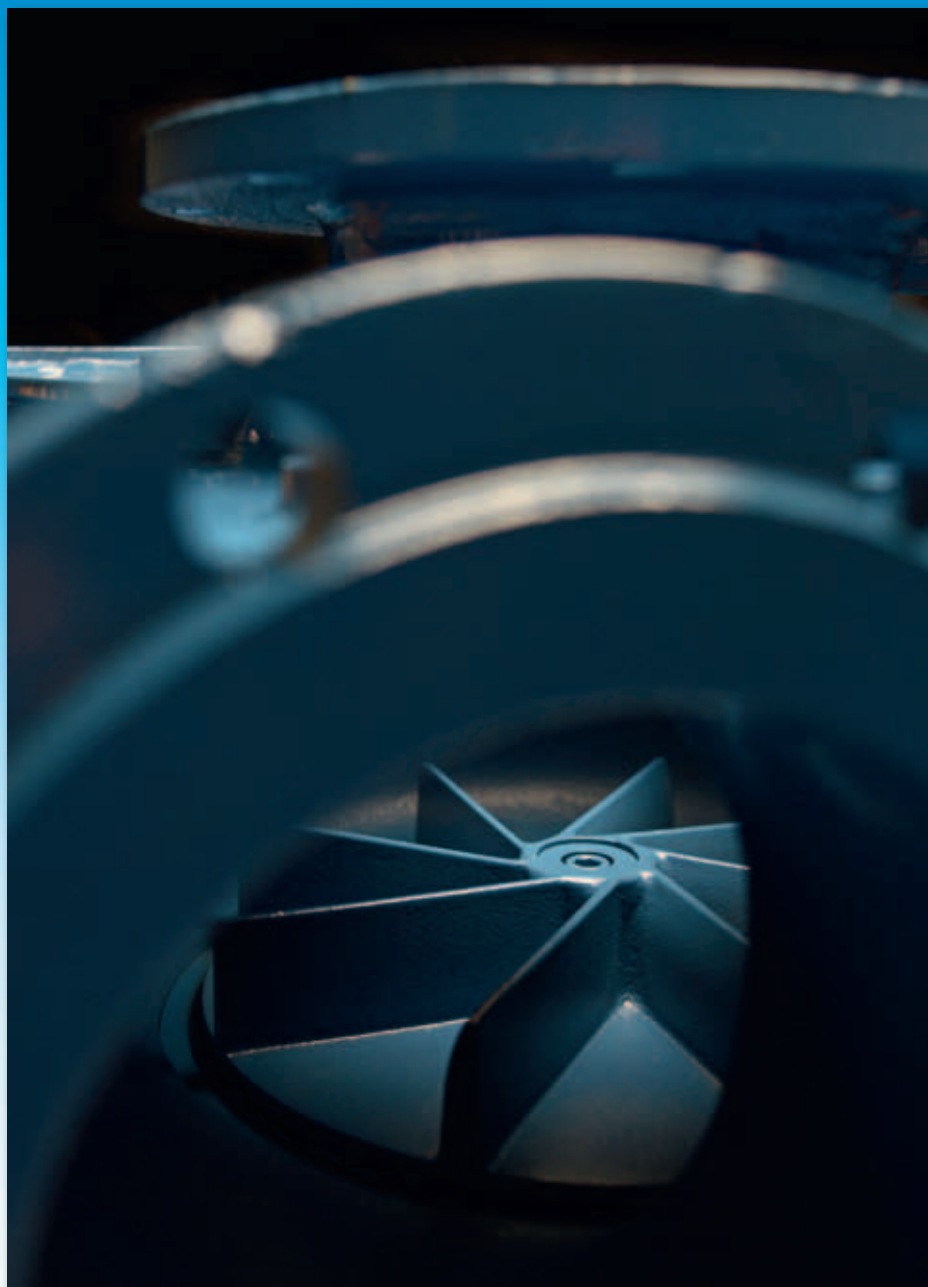


# LANDY Pump Solutions

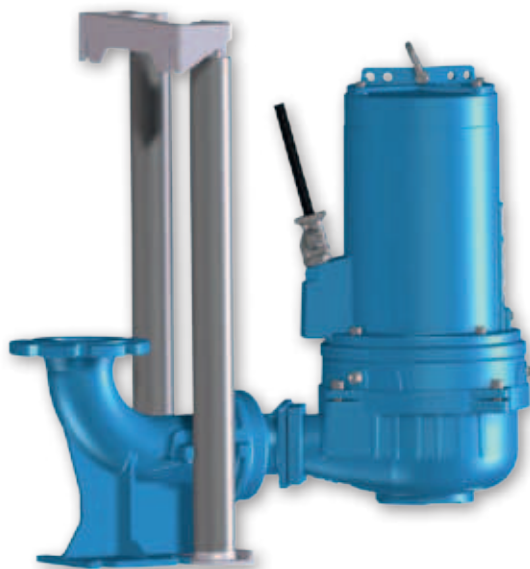


**Landustrie**   
POMP  IRECT

## INSTALLING SUBMERSIBLE LANDY PUMPS

### Duck foot coupling

For easy submersible installation, Landustrie has developed the duckfoot coupling. The pump slides easily down the guide rail(s) and will be firmly located on the duckfoot, a great advantage when servicing or checking the installation.



### Header coupling

To facilitate the building of compact installations Landustrie supplies various header couplings. The design is simple, the seal is achieved and sustained by the weight of the pump. Mounting the pump horizontally the pit/sump can be very small. One of the great advantages is a clean sump floor due to the Vortex developed in the sump. When lifting the pump all parts of the coupling are visible and available for inspection. In deeper sumps and/or when installing heavy pumps we advise a duckfoot coupling.



## INSTALLING SUBMERSIBLE LANDY PUMPS

### Vertical



Without options



Optional: claw for Duckfoot



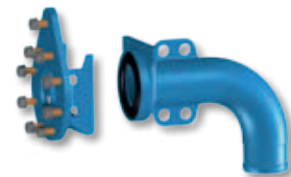
Optional OWK duckfoot coupling set



Vertical with hose connection or threaded connection



(VRS) Vertical freestanding optional hose connection or threaded connection



Optional BWK header coupling set

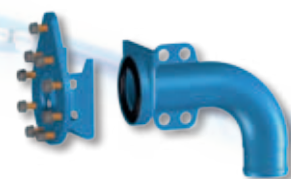
### Horizontal



Without options



With hose connection and/or suction elbow



Optional BWK header coupling set

## INSTALLING SUBMERSIBLE LANDY PUMPS WITH COOLING JACKET

OWK, BWK, VRS are available as shown on page  
*"Installing Submersible LANDY Pumps"*.

### Vertical



With the immersible installation option

### Horizontal



## INSTALLING SUBMERSIBLE LANDY NI-HARD4 PUMPS (DNP)

OWK, BWK, VRS are available as shown on page  
*"Installing Submersible LANDY Pumps"*.



Vertical without options



Vertical with agitator,  
 stand and discharge bend  
 With hose or threaded connection



Vertical slimline, with agitator,  
 stand and hose or  
 threaded connection