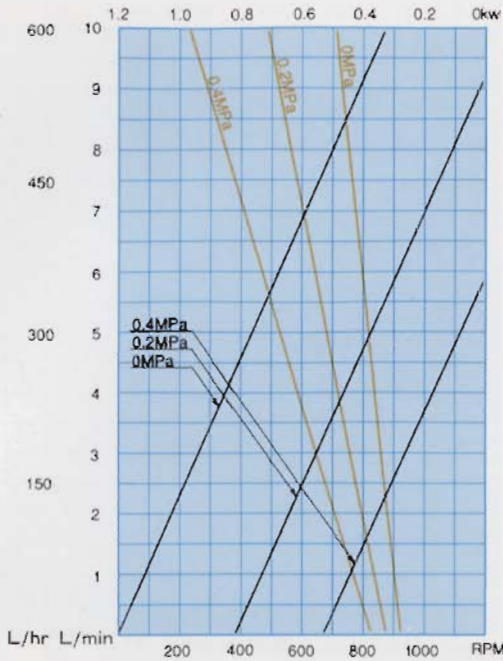


# PERFORMANCE CURVE

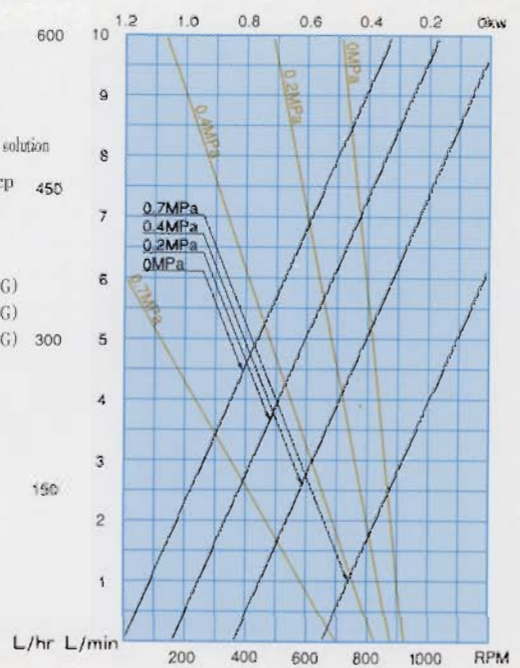
## JM2 (JO)

- Liquid: Water
  - Viscosity: 1 cp
  - Pipe Size: 1"
- 0 MPa (0 kg/cm<sup>2</sup>G)  
 0.2 MPa (approx. 2kg/cm<sup>2</sup>G)  
 0.4 MPa (approx. 4kg/cm<sup>2</sup>G)



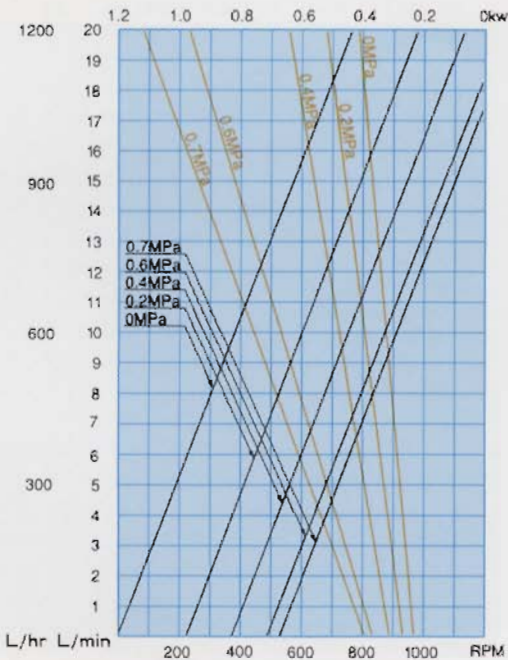
## JM2 (JO)

- Liquid: CMC aqueous solution
  - Viscosity: 500 cp
  - Pipe Size: 1"
- 0 MPa (0 kg/cm<sup>2</sup>G)  
 0.2 MPa (approx. 2kg/cm<sup>2</sup>G)  
 0.4 MPa (approx. 4kg/cm<sup>2</sup>G)  
 0.7 MPa (approx. 7kg/cm<sup>2</sup>G)



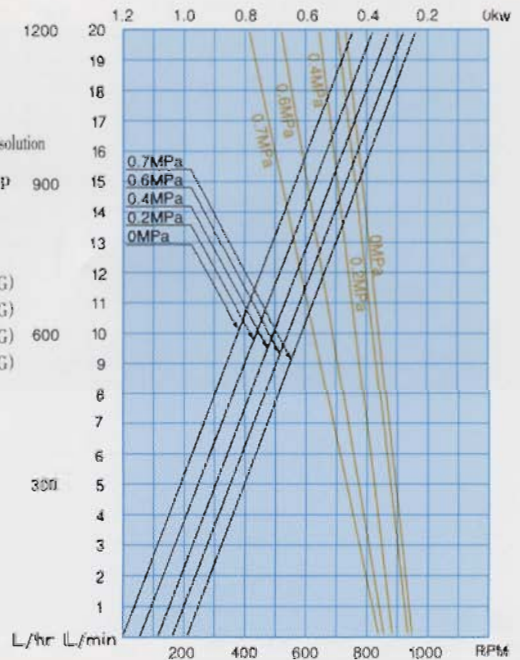
## JM4 (JO)

- Liquid: Water
  - Viscosity: 1 cp
  - Pipe Size: 1"
- 0 MPa (0 kg/cm<sup>2</sup>G)  
 0.2 MPa (approx. 2kg/cm<sup>2</sup>G)  
 0.4 MPa (approx. 4kg/cm<sup>2</sup>G)  
 0.6 MPa (approx. 6kg/cm<sup>2</sup>G)  
 0.7 MPa (approx. 7kg/cm<sup>2</sup>G)



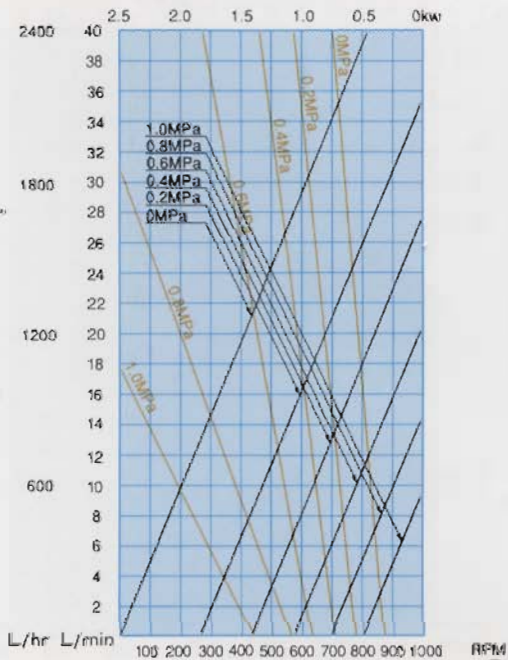
## JM4 (JO)

- Liquid: CMC aqueous solution
  - Viscosity: 500 cp
  - Pipe Size: 1"
- 0 MPa (0 kg/cm<sup>2</sup>G)  
 0.2 MPa (approx. 2kg/cm<sup>2</sup>G)  
 0.4 MPa (approx. 4kg/cm<sup>2</sup>G)  
 0.6 MPa (approx. 6kg/cm<sup>2</sup>G)  
 0.7 MPa (approx. 7kg/cm<sup>2</sup>G)



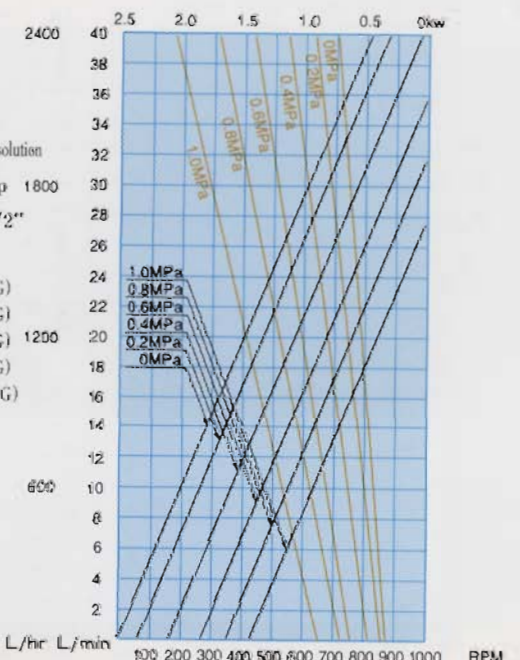
## JM10 (JO)

- Liquid: Water
  - Viscosity: 1 cp
  - Pipe Size: 1 1/2"
- 0 MPa (0 kg/cm<sup>2</sup>G)  
 0.2 MPa (approx. 2kg/cm<sup>2</sup>G)  
 0.4 MPa (approx. 4kg/cm<sup>2</sup>G)  
 0.6 MPa (approx. 6kg/cm<sup>2</sup>G)  
 0.8 MPa (approx. 8kg/cm<sup>2</sup>G)  
 1.0 MPa (approx. 10kg/cm<sup>2</sup>G)



## JM10 (JO)

- Liquid: CMC aqueous solution
  - Viscosity: 500 cp
  - Pipe Size: 1 1/2"
- 0 MPa (0 kg/cm<sup>2</sup>G)  
 0.2 MPa (approx. 2kg/cm<sup>2</sup>G)  
 0.4 MPa (approx. 4kg/cm<sup>2</sup>G)  
 0.6 MPa (approx. 6kg/cm<sup>2</sup>G)  
 0.8 MPa (approx. 8kg/cm<sup>2</sup>G)  
 1.0 MPa (approx. 10kg/cm<sup>2</sup>G)

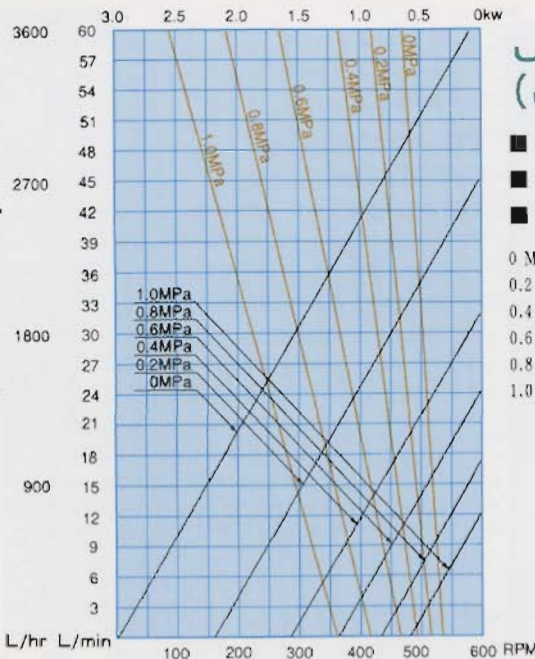


# PERFORMANCE CURVE

## JM16 (JO)

- Liquid: Water
- Viscosity: 1 cp
- Pipe Size: 1 1/2"

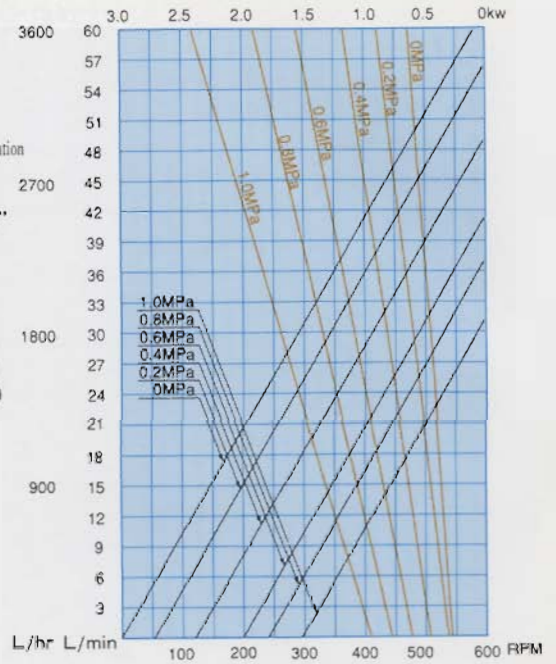
0 MPa (0 kg/cm<sup>2</sup>G)  
 0.2 MPa (approx. 2kg/cm<sup>2</sup>G)  
 0.4 MPa (approx. 4kg/cm<sup>2</sup>G)  
 0.6 MPa (approx. 6kg/cm<sup>2</sup>G)  
 0.8 MPa (approx. 8kg/cm<sup>2</sup>G)  
 1.0 MPa (approx. 10kg/cm<sup>2</sup>G)



## JM16 (JO)

- Liquid:CMC aqueous solution
- Viscosity:500 cp
- Pipe Size: 1 1/2"

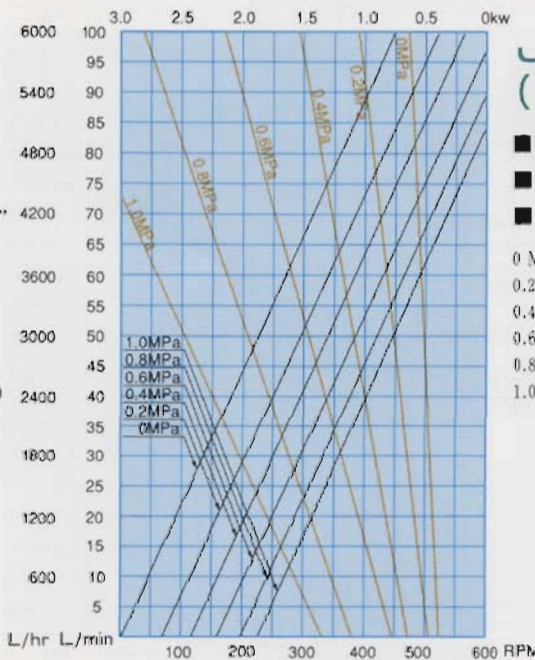
0 MPa (0 kg/cm<sup>2</sup>G)  
 0.2 MPa (approx. 2kg/cm<sup>2</sup>G)  
 0.4 MPa (approx. 4kg/cm<sup>2</sup>G)  
 0.6 MPa (approx. 6kg/cm<sup>2</sup>G)  
 0.8 MPa (approx. 8kg/cm<sup>2</sup>G)  
 1.0 MPa (approx. 10kg/cm<sup>2</sup>G)



## JM25 (JO)

- Liquid: Water
- Viscosity: 1 cp
- Pipe Size: 1 1/2"

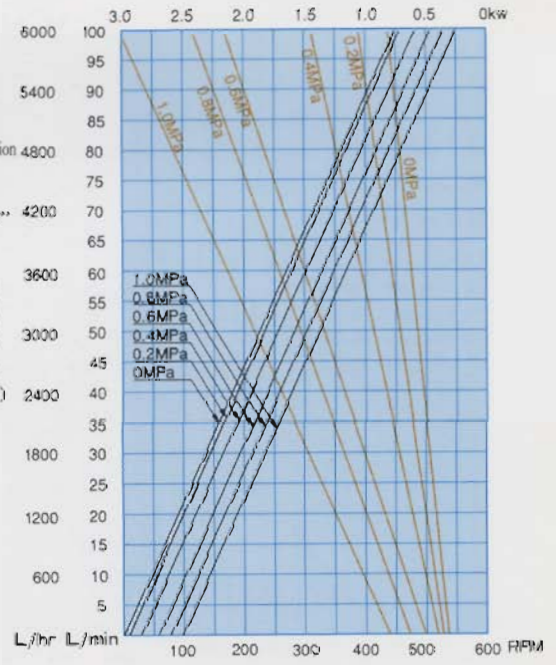
0 MPa (0 kg/cm<sup>2</sup>G)  
 0.2 MPa (approx. 2kg/cm<sup>2</sup>G)  
 0.4 MPa (approx. 4kg/cm<sup>2</sup>G)  
 0.6 MPa (approx. 6kg/cm<sup>2</sup>G)  
 0.8 MPa (approx. 8kg/cm<sup>2</sup>G)  
 1.0 MPa (approx. 10kg/cm<sup>2</sup>G)



## JM25 (JO)

- Liquid:CMC aqueous solution
- Viscosity:500 cp
- Pipe Size: 1 1/2"

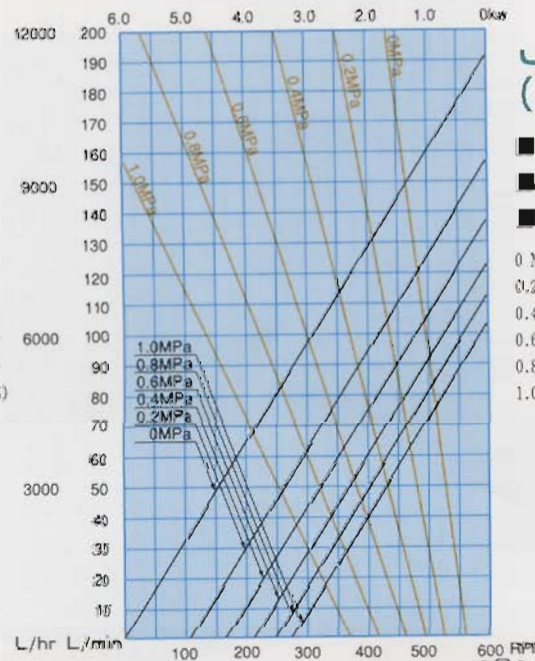
0 MPa (0 kg/cm<sup>2</sup>G)  
 0.2 MPa (approx. 2kg/cm<sup>2</sup>G)  
 0.4 MPa (approx. 4kg/cm<sup>2</sup>G)  
 0.6 MPa (approx. 6kg/cm<sup>2</sup>G)  
 0.8 MPa (approx. 8kg/cm<sup>2</sup>G)  
 1.0 MPa (approx. 10kg/cm<sup>2</sup>G)



## JM40 (JO)

- Liquid: Water
- Viscosity: 1 cp
- Pipe Size: 2"

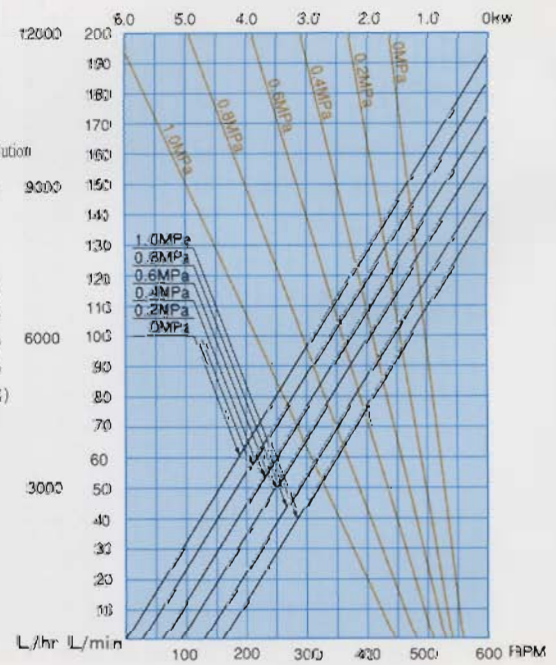
0 MPa (0 kg/cm<sup>2</sup>G)  
 0.2 MPa (approx. 2kg/cm<sup>2</sup>G)  
 0.4 MPa (approx. 4kg/cm<sup>2</sup>G)  
 0.6 MPa (approx. 6kg/cm<sup>2</sup>G)  
 0.8 MPa (approx. 8kg/cm<sup>2</sup>G)  
 1.0 MPa (approx. 10kg/cm<sup>2</sup>G)



## JM40 (JO)

- Liquid:CMC aqueous solution
- Viscosity:500 cp
- Pipe Size: 2"

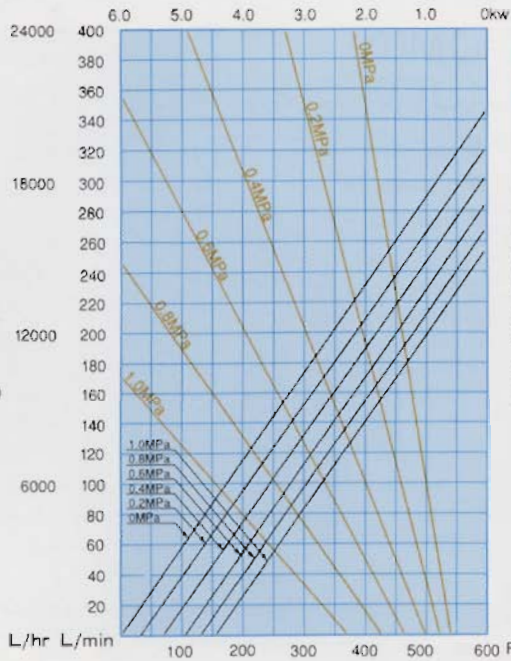
0 MPa (0 kg/cm<sup>2</sup>G)  
 0.2 MPa (approx. 2kg/cm<sup>2</sup>G)  
 0.4 MPa (approx. 4kg/cm<sup>2</sup>G)  
 0.6 MPa (approx. 6kg/cm<sup>2</sup>G)  
 0.8 MPa (approx. 8kg/cm<sup>2</sup>G)  
 1.0 MPa (approx. 10kg/cm<sup>2</sup>G)



# PERFORMANCE CURVE

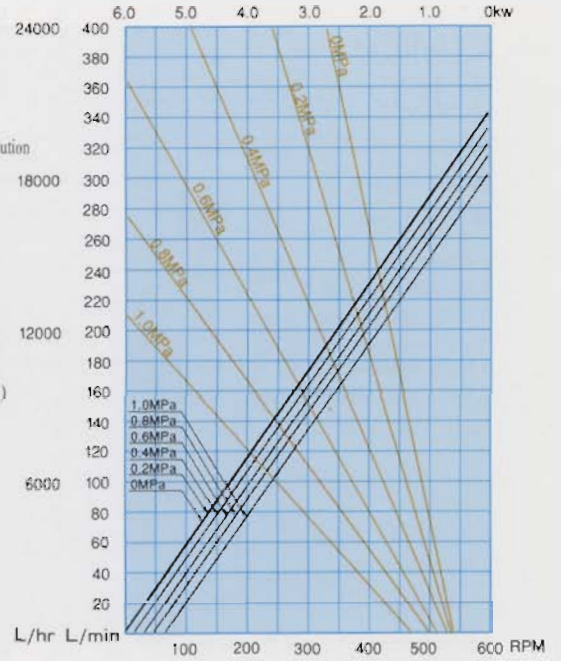
## JM55 (JO)

- Liquid: Water
  - Viscosity: 1 cp
  - Pipe Size: 2"
- 0 MPa (0 kg/cm<sup>2</sup>)  
 0.2 MPa (approx. 2kg/cm<sup>2</sup>)  
 0.4 MPa (approx. 4kg/cm<sup>2</sup>)  
 0.6 MPa (approx. 6kg/cm<sup>2</sup>)  
 0.8 MPa (approx. 8kg/cm<sup>2</sup>)  
 1.0 MPa (approx. 10kg/cm<sup>2</sup>)



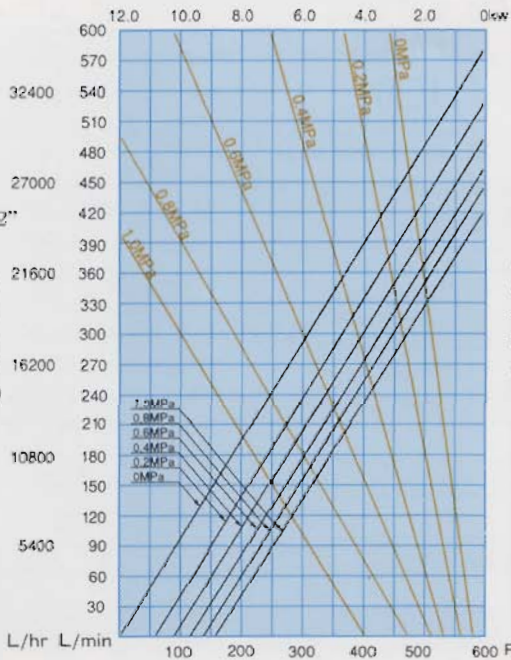
## JM55 (JO)

- Liquid: CMC aqueous solution
  - Viscosity: 500 cp
  - Pipe Size: 2"
- 0 MPa (0 kg/cm<sup>2</sup>)  
 0.2 MPa (approx. 2kg/cm<sup>2</sup>)  
 0.4 MPa (approx. 4kg/cm<sup>2</sup>)  
 0.6 MPa (approx. 6kg/cm<sup>2</sup>)  
 0.8 MPa (approx. 8kg/cm<sup>2</sup>)  
 1.0 MPa (approx. 10kg/cm<sup>2</sup>)



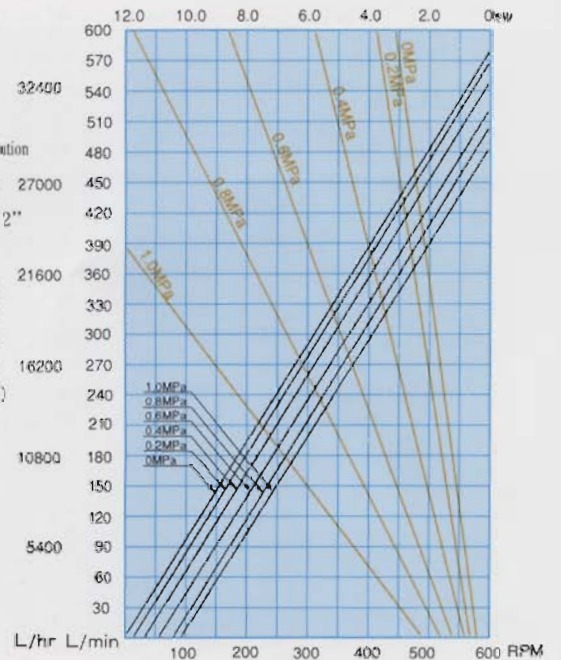
## JM125 (JO)

- Liquid: Water
  - Viscosity: 1 cp
  - Pipe Size: 2 1/2"
- 0 MPa (0 kg/cm<sup>2</sup>)  
 0.2 MPa (approx. 2kg/cm<sup>2</sup>)  
 0.4 MPa (approx. 4kg/cm<sup>2</sup>)  
 0.6 MPa (approx. 6kg/cm<sup>2</sup>)  
 0.8 MPa (approx. 8kg/cm<sup>2</sup>)  
 1.0 MPa (approx. 10kg/cm<sup>2</sup>)



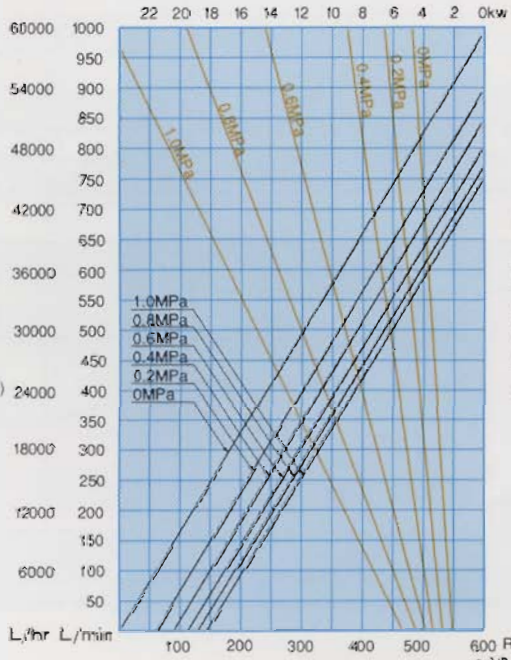
## JM125 (JO)

- Liquid: CMC aqueous solution
  - Viscosity: 500 cp
  - Pipe Size: 2 1/2"
- 0 MPa (0 kg/cm<sup>2</sup>)  
 0.2 MPa (approx. 2kg/cm<sup>2</sup>)  
 0.4 MPa (approx. 4kg/cm<sup>2</sup>)  
 0.6 MPa (approx. 6kg/cm<sup>2</sup>)  
 0.8 MPa (approx. 8kg/cm<sup>2</sup>)  
 1.0 MPa (approx. 10kg/cm<sup>2</sup>)



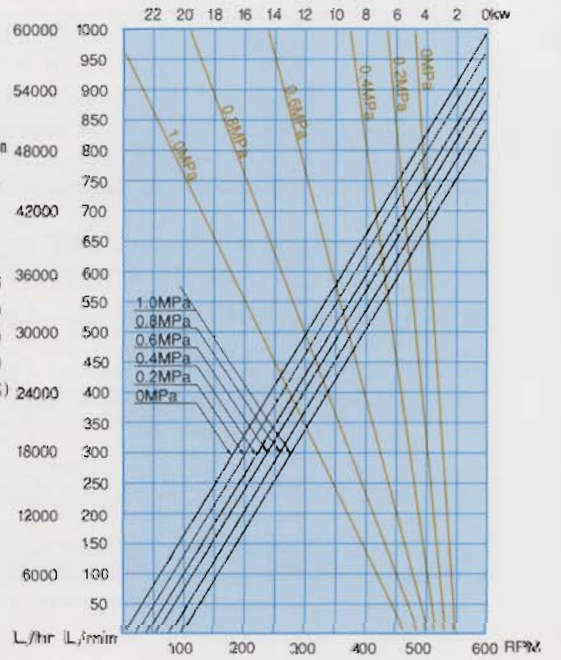
## JM160 (JO)

- Liquid: Water
  - Viscosity: 1 cp
  - Pipe Size: 4"
- 0 MPa (0 kg/cm<sup>2</sup>)  
 0.2 MPa (approx. 2kg/cm<sup>2</sup>)  
 0.4 MPa (approx. 4kg/cm<sup>2</sup>)  
 0.6 MPa (approx. 6kg/cm<sup>2</sup>)  
 0.8 MPa (approx. 8kg/cm<sup>2</sup>)  
 1.0 MPa (approx. 10kg/cm<sup>2</sup>)



## JM160 (JO)

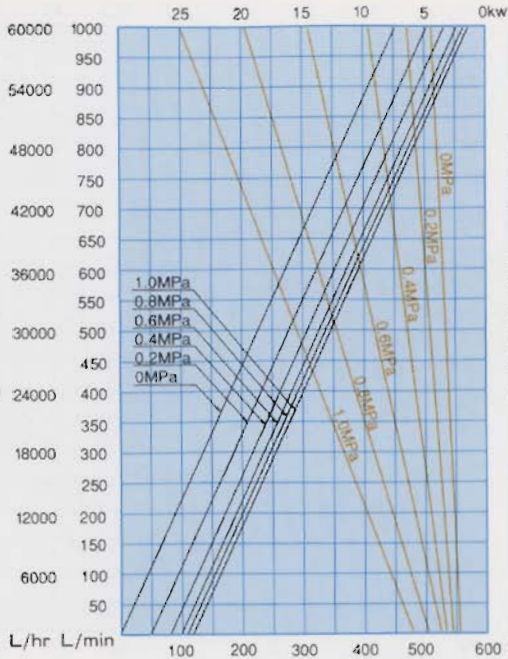
- Liquid: CMC aqueous solution
  - Viscosity: 500 cp
  - Pipe Size: 4"
- 0 MPa (0 kg/cm<sup>2</sup>)  
 0.2 MPa (approx. 2kg/cm<sup>2</sup>)  
 0.4 MPa (approx. 4kg/cm<sup>2</sup>)  
 0.6 MPa (approx. 6kg/cm<sup>2</sup>)  
 0.8 MPa (approx. 8kg/cm<sup>2</sup>)  
 1.0 MPa (approx. 10kg/cm<sup>2</sup>)



# PERFORMANCE CURVE

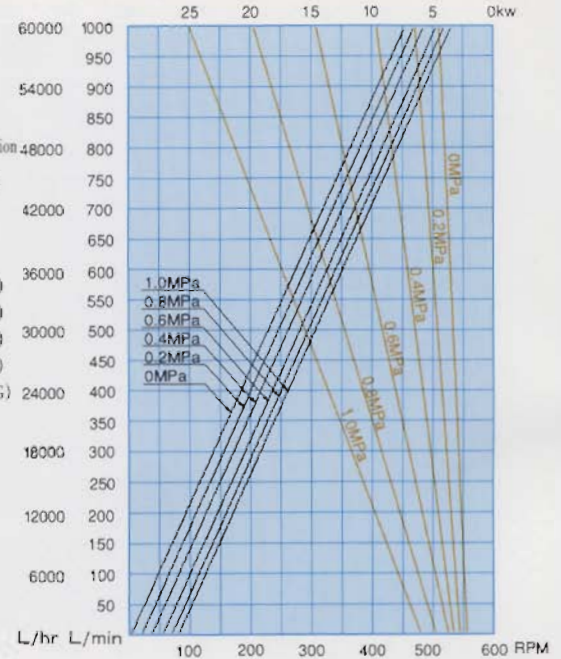
## JM200 (JO)

- Liquid: Water
  - Viscosity: 1 cp
  - Pipe Size: 4"
- 0 MPa (0 kg/cm<sup>2</sup>G)  
 0.2 MPa (approx. 2kg/cm<sup>2</sup>G)  
 0.4 MPa (approx. 4kg/cm<sup>2</sup>G)  
 0.6 MPa (approx. 6kg/cm<sup>2</sup>G)  
 0.8 MPa (approx. 8kg/cm<sup>2</sup>G)  
 1.0 MPa (approx. 10kg/cm<sup>2</sup>G)



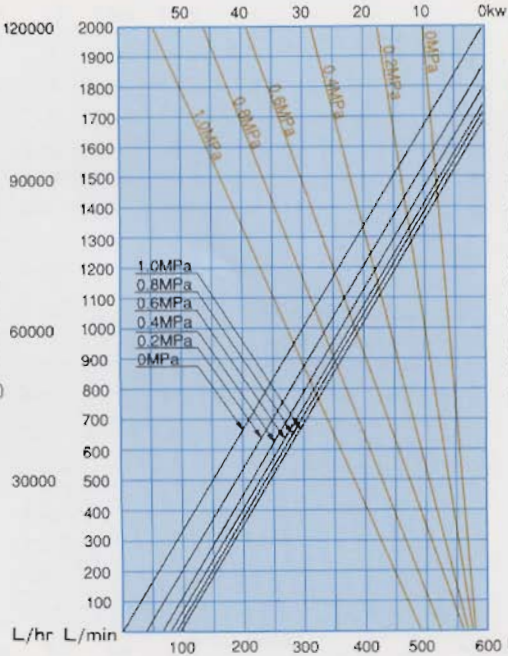
## JM200 (JO)

- Liquid: CMC aqueous solution
  - Viscosity: 500 cp
  - Pipe Size: 4"
- 0 MPa (0 kg/cm<sup>2</sup>G)  
 0.2 MPa (approx. 2kg/cm<sup>2</sup>G)  
 0.4 MPa (approx. 4kg/cm<sup>2</sup>G)  
 0.6 MPa (approx. 6kg/cm<sup>2</sup>G)  
 0.8 MPa (approx. 8kg/cm<sup>2</sup>G)  
 1.0 MPa (approx. 10kg/cm<sup>2</sup>G)



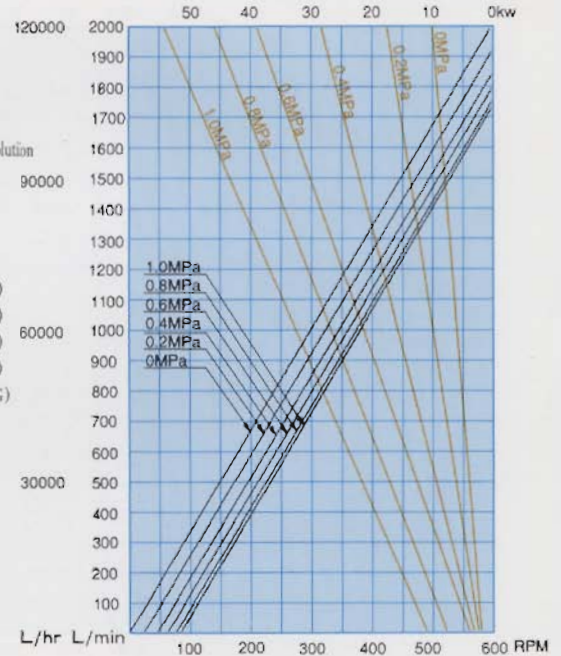
## JM300 (JO)

- Liquid: Water
  - Viscosity: 1 cp
  - Pipe Size: 6"
- 0 MPa (0 kg/cm<sup>2</sup>G)  
 0.2 MPa (approx. 2kg/cm<sup>2</sup>G)  
 0.4 MPa (approx. 4kg/cm<sup>2</sup>G)  
 0.6 MPa (approx. 6kg/cm<sup>2</sup>G)  
 0.8 MPa (approx. 8kg/cm<sup>2</sup>G)  
 1.0 MPa (approx. 10kg/cm<sup>2</sup>G)



## JM300 (JO)

- Liquid: CMC aqueous solution
  - Viscosity: 500 cp
  - Pipe Size: 6"
- 0 MPa (0 kg/cm<sup>2</sup>G)  
 0.2 MPa (approx. 2kg/cm<sup>2</sup>G)  
 0.4 MPa (approx. 4kg/cm<sup>2</sup>G)  
 0.6 MPa (approx. 6kg/cm<sup>2</sup>G)  
 0.8 MPa (approx. 8kg/cm<sup>2</sup>G)  
 1.0 MPa (approx. 10kg/cm<sup>2</sup>G)



(Note) These performance curves have been prepared on the basis of the values resulting from the tests conducted without suction pressure (atmospheric). In some cases these usage conditions may differ from actual situations. Please contact us for further details and motive power.

## CORRELATION OF VISCOSITY TO MAXIMUM PERMISSIBLE ROTATIONAL SPEED

(Note) The maximum permissible rotational speed related to viscosity varies slightly with liquid quality.

